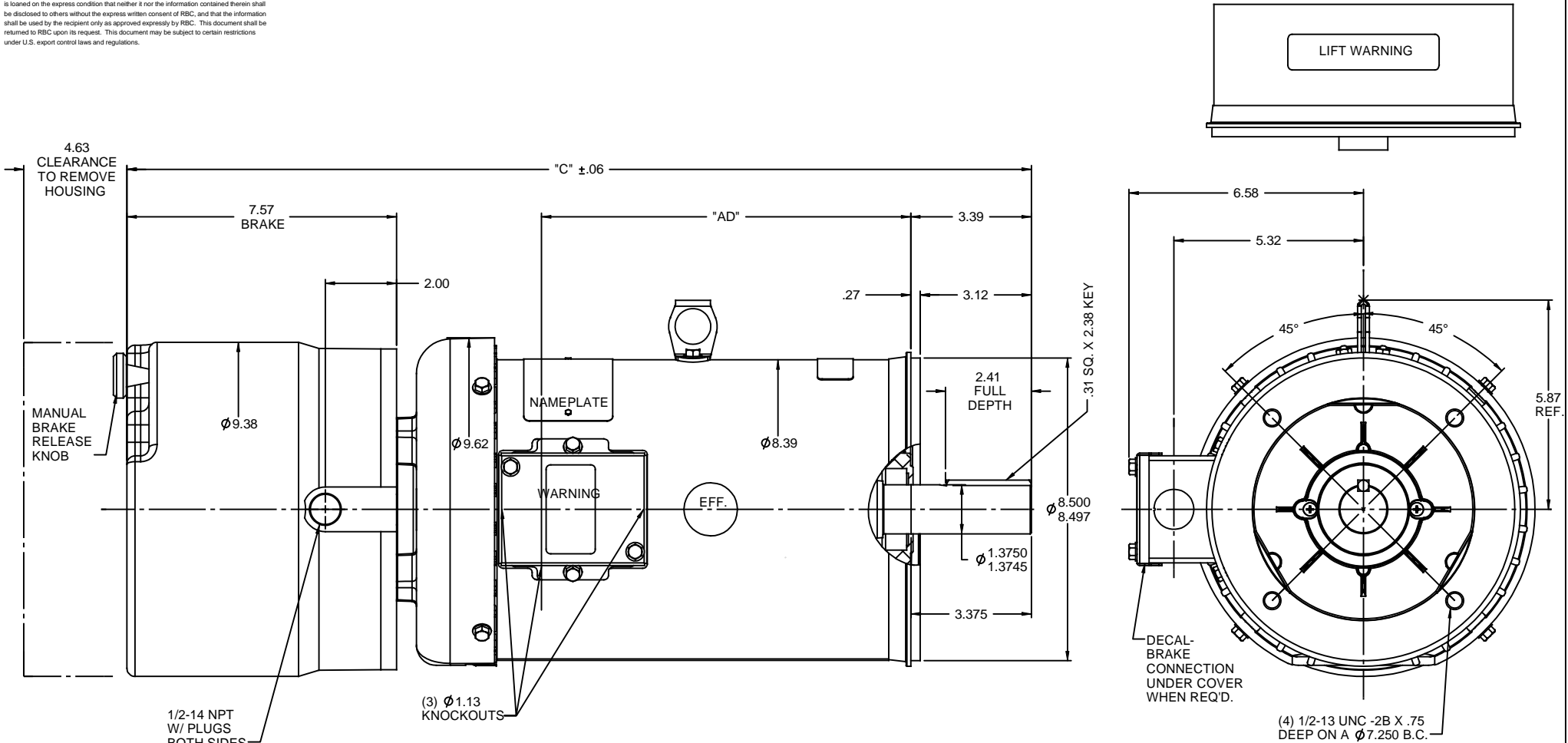


RBC PROPRIETARY AND CONFIDENTIAL INFORMATION  
 This document is the property of REGAL BELOIT CORPORATION ("RBC") including its subsidiaries and divisions and contains proprietary information of RBC. This document is loaned on the express condition that neither it nor the information contained therein shall be disclosed to others without the express written consent of RBC, and that the information shall be used by the recipient only as approved expressly by RBC. This document shall be returned to RBC upon its request. This document may be subject to certain restrictions under U.S. export control laws and regulations.



GASKETS THROUGHOUT  
 MAXIMUM FACE RUNOUT TO BE .004 T.I.R.  
 MAXIMUM PILOT ECCENTRICITY TO BE .004 T.I.R.  
 PERMISSIBLE SHAFT RUNOUT TO BE .002 T.I.R.

DASH NO.	"C"	"AD"
1050	24.89	9.88
1100	25.39	10.38
1150	25.89	10.88

TOLERANCES UNLESS SPECIFIED		REGAL BELOIT CORPORATION		DRAWN	RSK 12/29/97
DEC	INCHES	REGAL BELOIT CORPORATION	REGAL BELOIT CORPORATION	CHK	PG 12/29/97
x	±.1			APPR	RK 12/29/97
.xx	±.03	TITLE	OUTLINE - 180TC FRAME	SCALE	3:8
.xxx	±.005		TEFC - "C" FACE	REF	035237
.xxx	±.0005	MAT'L	BRAKE MOTOR	FMF	
NO	REVISION	BY & DATE	FINISH	PAGE	OF
	THIRD ANGLE PROJECTION		PREV	SIZE	DRAWING NO
				B	035395
		NETWORK FILE NAME			REV
					-