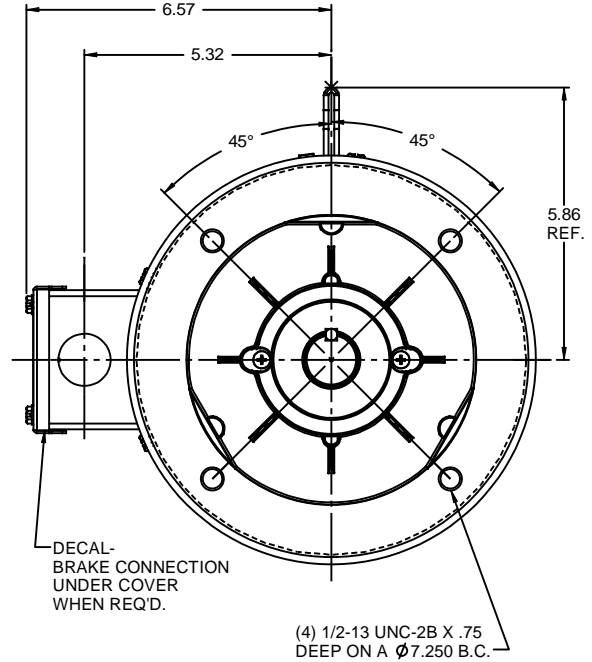
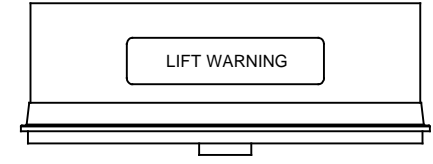
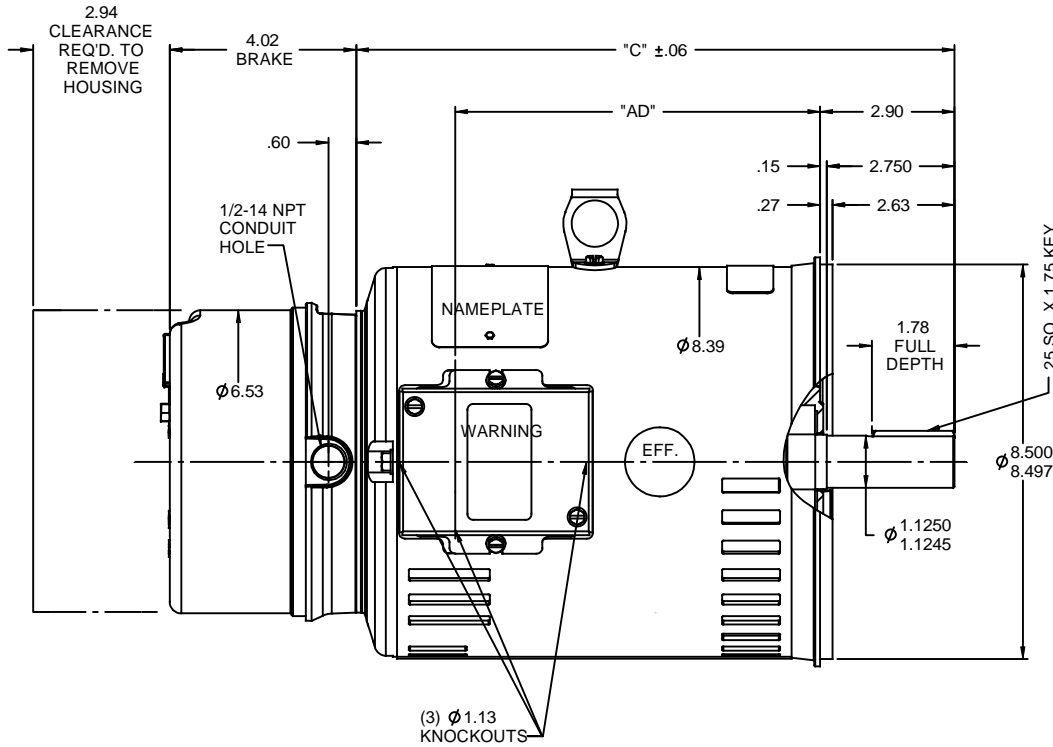
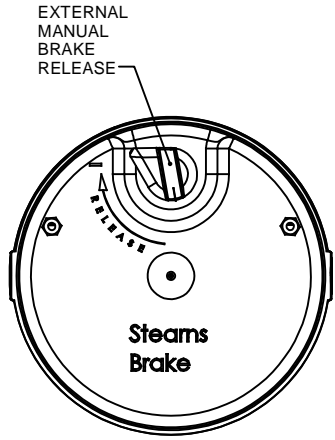


RBC PROPRIETARY AND CONFIDENTIAL INFORMATION
 This document is the property of REGAL BELOIT CORPORATION ("RBC") including its subsidiaries and divisions and contains proprietary information of RBC. This document is loaned on the express condition that neither it nor the information contained therein shall be disclosed to others without the express written consent of RBC, and that the information shall be used by the recipient only as approved expressly by RBC. This document shall be returned to RBC upon its request. This document may be subject to certain restrictions under U.S. export control laws and regulations.



GASKETS THROUGHOUT
 MAXIMUM FACE RUNOUT TO BE .004 T.I.R.
 MAXIMUM PILOT ECCENTRICITY TO BE .004 T.I.R.
 PERMISSIBLE SHAFT RUNOUT TO BE .002 T.I.R.

DASH NO.	"C"	"AD"
800	12.39	7.38
850	12.89	7.88
900	13.39	8.38
950	13.89	8.88
1000	14.39	9.38
1050	14.89	9.88
1100	15.39	10.38
1150	15.89	10.88

REVISION		BY & DATE	CHK	ANG	FINISH	SIZE	DRAWING NO	REV
- UPDATED & REDRAWN IN SOLIDWORKS		LST 12/4/2009	XX	XXX	±.0005			
REVISION		BY & DATE	CHK	ANG	FINISH	SIZE	DRAWING NO	REV
			RFP	±1/2°	PREV	B	035365	-
THIRD ANGLE PROJECTION		TOLERANCES UNLESS SPECIFIED		REGAL BELOIT CORPORATION		DRAWN PG 9/29/97		
		DEC INCHES		TITLE OUTLINE - 180TC FRAME		CHK		
		X ±.1		DRIP PROOF - "C" FACE		APPR RSK 9/29/97		
		.XX ±.03		MATL BRAKE MOTOR		SCALE 3:8		
		.XXX ±.005				REF 035256		
		XX XXXX ±.0005				FMF		
		RFP				PAGE OF		
		NETWORK FILE NAME						