

BALDOR® • RELIANCE

Product Information Packet

29-1492-1183

3HP,1750RPM,DC,215C,7544D,TEFC,F1

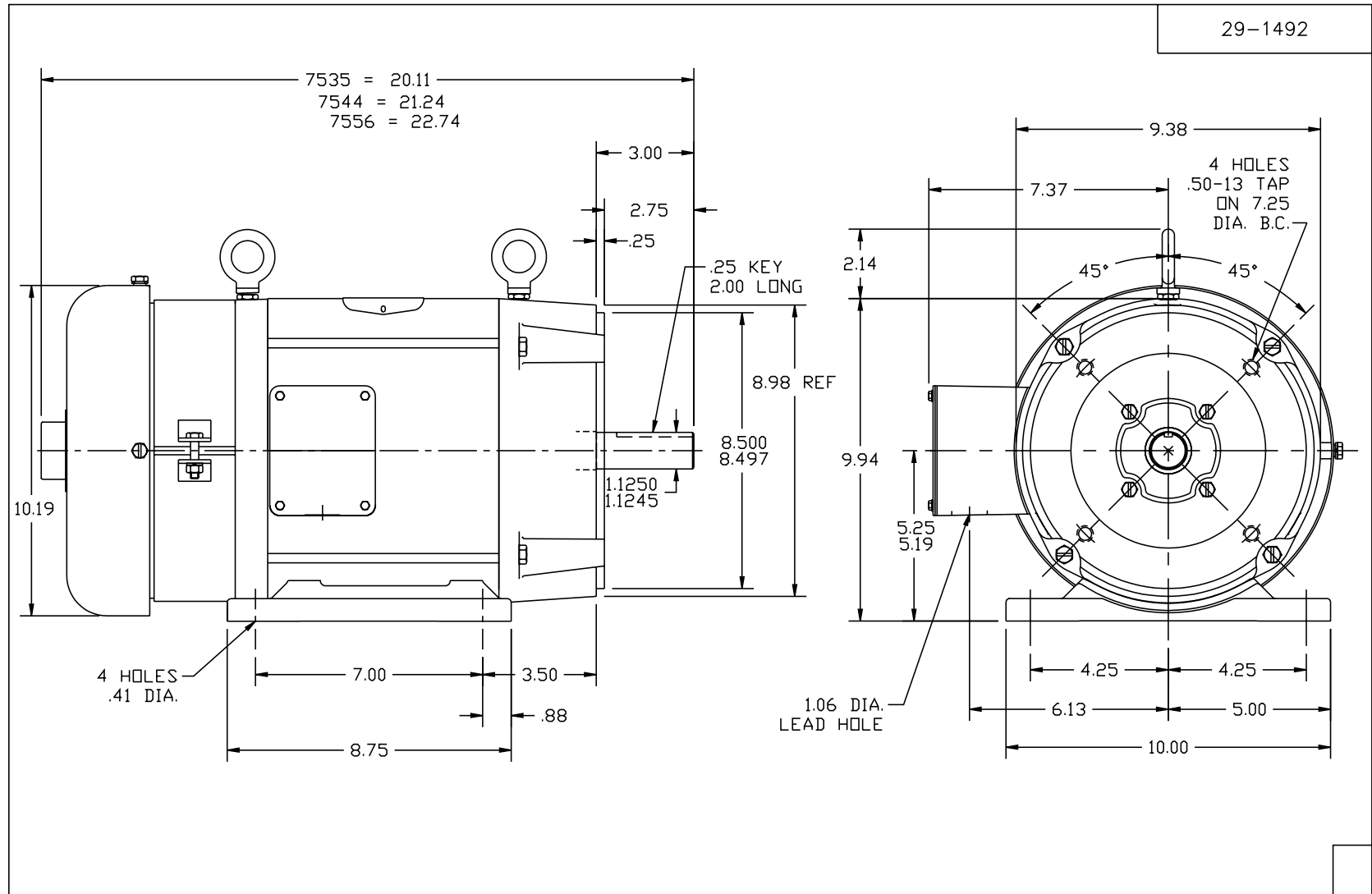
Product Detail							
Revision:	S	Status:	INA/A	Change #:		Proprietary:	No
Type:	DC	Prod Type:		Elec. Spec:	29WG1183	CD Diagram:	CD0860C01
Enclosure	TEFC	Mfg Plant:		Mech Spec:	29-1492	Layout:	29LY1492
Frame:	215C	Mounting:	F1	Poles:	4///	Created Date:	
Base:	RG	Rotation:	R	Insulation:	F	Eff. Date:	02-12-2002
Leads:		Literature:		Elec. Diagram:		Replaced By:	29-1492W200

Nameplate NP0668

CAT.NO.			
SPEC.	29-1492-1183		
HP	3	ENCL	TEFC
RPM	1750		
FRAME	215C	TYPE	SH7544D
ARM V	180	ARM A	14.5
FLD V	200/100	FLD A	.4/.8
INSUL	F	AMB.	40C
DUTY	CONT	SUPPLY	K
BRG/DE	6306	BRG/ODE	6306
BRUSHES	4/BP5002A02		
		BLANK	
SER.			
BLANK			
APRV-CSA	Y		

Parts List		
Product ID	Description	Quantity
SA043382	SA 29-1492-1183	1.000
AA004977	AA 29-1492-1183 (NO LONGER AVAILABLE)	1.000
29BA1000A01	BASE, MACH	1.000
10XN3816K16	3/8-16 X 1 HEX HD CAP GRADE 5	4.000
HW1001A38	LOCKWASHER 3/8, ZINC PLT .688 OD, .382 I	4.000
37CB3000SP	CONDUIT BOX, CAST, W/1.089/1.100 CAST LE	1.000
37GS1000SP	GASKET, CONDUIT BOX STD., .06 THICK LEXI	1.000
10XN2520K12	1/4-20 X.75 GRD 5	2.000
HW1001A25	LOCKWASHER 1/4, ZINC PLT .493 OD, .255 I	2.000
11XF1032G06	10-32X3/8 HXWSHR HDSDLTYF W/GREEN COATIN	1.000
HW3001A01	D3019 BRASS WASHER(STIMP)	1.000
HW1003A10	WASHER, #10 EX TH LK, ZN X	1.000
HA1017A01	29-51 INDICATOR RING	1.000
29EP1101A03	FR ENDPLATE, 75DC TEFC MACH'D FOR TACH	1.000
29CV5001SP	INSPECTION BAND ASSY	1.000
29GS4000	GASKET, INSPECTION BAND	1.000
10XN2520K20	1/4-20 X 1.25" HX HD SCRWGRADE 5, ZI	1.000
HW1001A25	LOCKWASHER 1/4, ZINC PLT .493 OD, .255 I	1.000
XY2520A12	1/4-20 HEX NUT, DIRECTIONAL SERRATIONS	1.000
HW5100A07	W2816-030 WVY WASHER (WB)	1.000
29EP1301A01	PU EP, MACH ENCL FACE MTD 75DC FRAME F/3	1.000
10XN2520K24	1/4-20X 1 1/2 HEX HD, GRADE 5	4.000
HW1001A25	LOCKWASHER 1/4, ZINC PLT .493 OD, .255 I	4.000
37FN5001A02	EXFN ASSY, BALTRIC, 8.50 OD, 1.174 ID	1.000

Parts List (continued)		
Product ID	Description	Quantity
80XN2520A06	1/4-20 X 3/8 SET SCREW	1.000
37FH5000A03	FAN COVER ASS'Y, FOR 75DC W/MFTK	1.000
10XN2520K14	1/4-20 X .88 HEX GRD 5 (20001)	3.000
HW1001A25	LOCKWASHER 1/4, ZINC PLT .493 OD, .255 I	3.000
37CB4500SP	CONDUIT BOX LID, STAMPED X	1.000
37GS1001SP	GASKET, CONDUIT BOX LID, .06 THICK LEXID	1.000
51XT0832A07	8-32 X .44 TYPE 23 HEX WASHER SLOTTED	4.000
HW2501E18	KEY, 1/4 SQ X 2.000	1.000
LB1115		1.000
85XU0407A04		2.000
MG1000G28SPP	S-9282E CHARCOAL GREY 5GAHAZARDOUS CHEM	0.013
NP0668	N.P. DC W/BRUSH & BRG PN	1.000
HA3104A09	THRUBOLT- 5/16-18 X 9.500 OHIO ROD	4.000
29RK5000A02	ROCKERARM ASSY	1.000
LB1125A01SP	STOCK MTR CARTON LABEL LASER PRINTER	1.000
29PA1024	PACKAGING GROUP/LB5015 ,MTRS OVER 150 LB	1.000
LB5015	INSTRUCTION TAG	1.000
LB1119		1.000



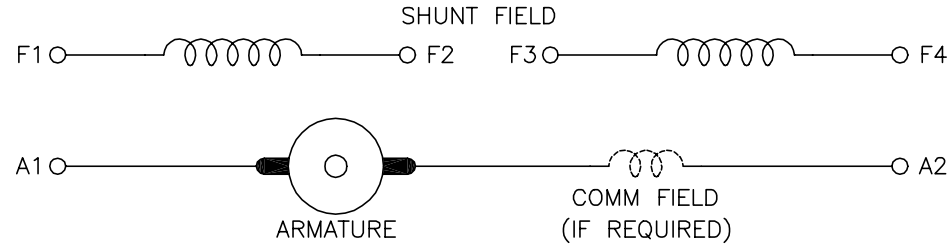
29-1492

CUST. NAME		CUST. P.O.		CERTIFIED BY		MODEL		INSUL		AMB	
H.P.		MTG		TYPE		R.P.M.		VOLTS		ENCL	
PHASE		FREQ		FRAME		REMARKS:					
REV:	H	MOVED TO ACAD & TEXT TO TDB									
2671-62		REF: 29-1457	BY: MW	REVISED: 09/19/95		BALDOR ELECTRIC Co.					
29-1492		FILE: AAA00023604	TDR: 0067335								

29-1492

CD0860C01

SHUNT WOUND



CONNECTION	DIRECTION OF ROTATION			
	CWDE		CCWDE	
	POS TERM (+)	NEG TERM (-)	POS TERM (+)	NEG TERM (-)
HIGH VOLTAGE	A1 F1 CONNECT F2 & F3	A2 F4	A2 F1 CONNECT F2 & F3	A1 F4
LOW VOLTAGE	A1 F1 & F3	A2 F2 & F4	A2 F1 & F3	A1 F2 & F4

NOTES:

1. LIMIT STARTING INRUSH CURRENT TO NOT MORE THAN 3 TIMES RATED AMPERES BY ENERGIZING THE FULL SHUNT FIELD BEFORE BRINGING THE ARMATURE VOLTAGE UP SLOWLY OR IN STEPS.
2. OPTIONAL FIELD REOSTAT MAY BE CONNECTED IN SERIES WITH THE SHUNT FIELD.
3. OPTIONAL THERMOSTAT LEADS ARE MARKED J,J.

REV. DESC: NEW, REPLACE CD0860

REV. LTR: - BY: JLP REVISED: 15: 35: 22 11/03/2004 TDR: 347796

100098000

FILE: AAA00121477 REF: CD0860C01
MTL: -

BALDOR ELECTRIC Co.

DC CONNECTION DIAGRAM, SHUNT FIELD, 6 LEAD, DUAL VOLTAGE

CD0860C01