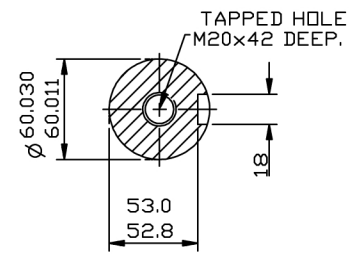


THIS LIFTING LUG FITTED ONLY WHEN MOTOR IS VERTICALLY MOUNTED.



SECTION THROUGH SHAFT EXTENSION. (SCALE 1:3).

NOTE:- CABLE ENTRY CAN BE SUPPLIED IN ANY ONE OF FOUR POSITIONS AT 90 ° INTERVALS.

NOTE! STANDARD MACHINES ARE ARRANGED FOR HORIZONTAL OVERHUNG MOUNTING. CUSTOMERS SHOULD NOTIFY US WHEN ORDERING IF VERTICAL MOUNTING IS REQUIRED. IF VERTICAL, THE MOTOR THRUST BEARING MUST NOT BE ALLOWED TO TAKE ANY LOAD OTHER THAN THE WEIGHT OF THE ROTOR WITHOUT OUR APPROVAL.

CUSTOMER		
ORDER No.		
SERIAL No.		
FRAME SIZE		
KW	R.P.M.	
Hz	PHASE 3	
VOLTS	POLES	
BRGS.	D.F.	N.D.F.
MOTOR NETT. WT. Kg.		
INSULATION CLASS		
TEMPERATURE RISE °C		
DESIGN AMBIENT TEMPERATURE °C		
HEATER WATTS & VOLTS (IF FITTED)		
- WATTS, - VOLTS		

REMARKS  
 EEx de IIB  
 BASEEFA CERTIFICATE  
 No. Ex99E1042X.  
 or  
 EEx de IIC  
 BASEEFA CERTIFICATE  
 No. Ex99E1043X.

ALL DIMENSIONS IN MILLIMETRES	
	FIRST ANGLE PROJECTION

NOTE! 2.5 ENDPLAY WILL BE PROVIDED FOR ENDTHRUST PROTECTION WHEN CUSTOMERS NOTIFY US OF THEIR INTENTION TO USE RIGID COUPLINGS AND DRIVEN MACHINES WITHOUT ENDPLAY.

OUTLINE DIMENSIONS OF STANDARD FLANGE MOUNTED METRIC A.C MOTOR TO BS4999 PART 141. EEx de TO EN50014/18/19. TOTALLY ENCLOSED FAN VENTILATED. FRAME SIZE: W-EF250M-D (2 POLE ONLY).

SCALE	1/8	DATE
DRAWN	LM	24.1.00
CHECKED	J.M.L	24.1.00
APPROVED	J.M.L	24.1.00

DRG. No.	M70244
REVISION:	DATE