

# **BALDOR® • RELIANCE**

**Product Information Packet**

**ELECTRIC MOTOR WHOLESAL.COM**

**BM3734T**

**10HP,1770RPM,3PH,60HZ,215T,3740M,TEFC,F1**

Part Detail							
Revision:	C	Status:	PRD/A	Change #:		Proprietary:	No
Type:	AC	Prod. Type:	3740M	Elec. Spec:	37WGS275	CD Diagram:	
Enclosure:	TEFC	Mfg Plant:		Mech. Spec:	37A021	Layout:	
Frame:	215T	Mounting:	F1	Poles:	04	Created Date:	07-18-2007
Base:	RG	Rotation:	R	Insulation:	F	Eff. Date:	03-03-2011
Leads:	9#14	Literature:		Elec. Diagram:		Replaced By:	

**Nameplate NP1256L**

CAT.NO.	BM3734T						
SPEC.	37A021S275H1						
HP	10						
VOLTS	208-230/460						
AMP	28-27/13.5						
RPM	1770						
FRAME	215T	HZ	60	PH	3		
SER.F.	1.15	CODE	K	DES	A	CLASS	F
NEMA-NOM-EFF	89.5	PF	77				
RATING	40C AMB-CONT						
CC			USABLE AT 208V				
DE	6307	ODE	6306				
ENCL	TEFC	SN					

Parts List		
Part Number	Description	Quantity
SA160796	SA 37A021S275H1	1.000 EA
RA149378	RA 37A021S275H1	1.000 EA
S/P101-000-000	EPACT PROCEDURES-FS PLANT-POLYREX EM, NO	1.000 EA
HW3200A01	3/8-16X3/4 I-BLT WELDED F/S	1.000 EA
37CB3006	37 CB CASTING W/1.38 LEAD HOLE @ 6:00	1.000 EA
37GS1000SP	GASKET, CONDUIT BOX STD., .06 THICK LEXI	1.000 EA
51XW2520A12	.25-20 X .75, TAPTITE II, HEX WSHR SLTD	2.000 EA
11XW1032G06	10-32 X .38, TAPTITE II, HEX WSHR SLTD U	1.000 EA
37EP1301A01	STD FACE MTD ENDPLATE, BRAKE MTG	1.000 EA
HW4500A01	1641B(ALEMITE)400 UNIV, GREASE FITT	1.000 EA
HW5100A07	W2816-030 WVY WASHER (WB)	1.000 EA
37EP3100A03	FR/PU ENDPLATE, MACH	1.000 EA
HW4500A01	1641B(ALEMITE)400 UNIV, GREASE FITT	1.000 EA
XY3118A12	5/16-18 HEX NUT DIRECTIONAL SERRATION	4.000 EA
84XN5013J12	1/2 13X3/4 HX SOCK, BK OX	4.000 EA
51XB1214A20	12-14X1.25 HXWSSLD SERTYB	1.000 EA
HW2500A16	EY, USA #606, WOODRUFF	1.000 EA
07FH4007A25	IEC FH W/GRSR, DRAIN & 1.62 DIA. SHAFT H	1.000 EA
51XW1032A06	10-32 X .38, TAPTITE II, HEX WSHR SLTD S	3.000 EA
37CB4516	LIPPED LID FOR 37 FRAME NEC KOBX	1.000 EA
37GS1008SP	37 GS FOR CB LID - LEXIDE	1.000 EA
51XW0832A07	8-32 X .44, TAPTITE II, HEX WSHR SLTD SE	4.000 EA
HW2501F21	KEY, 5/16 SQ X 2.375	1.000 EA
HA7000A02	KEY RETAINER RING, 1 1/8 DIA, 1 3/8 DIA	1.000 EA

Parts List (continued)		
Part Number	Description	Quantity
85XU0407S04	4X1/4 U DRIVE PIN STAINLESS	2.000 EA
LB1115	LABEL,LIFTING DEVICE	1.000 EA
MJ1000A75	GREASE, POLYREX EM EXXON	0.050 LB
37FN3002A05	EXFN, PLASTIC, 9.00 OD, 1.380 ID	1.000 EA
MG1000G27	PAINT- S9282E CHARCOAL GREY	0.028 GA
HA3104A17	5/16-18X13.250 T-BLT/OHIO	4.000 EA
HW2501E10	KEY, 1/4 SQ X 1.000	1.000 EA
87BK4100EQF	87BK41000QF W/BR2701E01	1.000 EA
LB1125C04	STD-E (STOCK CTN LABEL STD-E WITH FLAG)	1.000 EA
LB1185	LABEL,BRAKE CONNECTION (ON ROLLS)	1.000 EA
LC0005E01	CONN.DIA./WARNING LABEL (LC0005/LB1119)	1.000 EA
NP1256L	ALUM, UL CSA CC, W/O THERMAL, LASER	1.000 EA
37PA1039	PACKAGING GROUP	1.000 EA

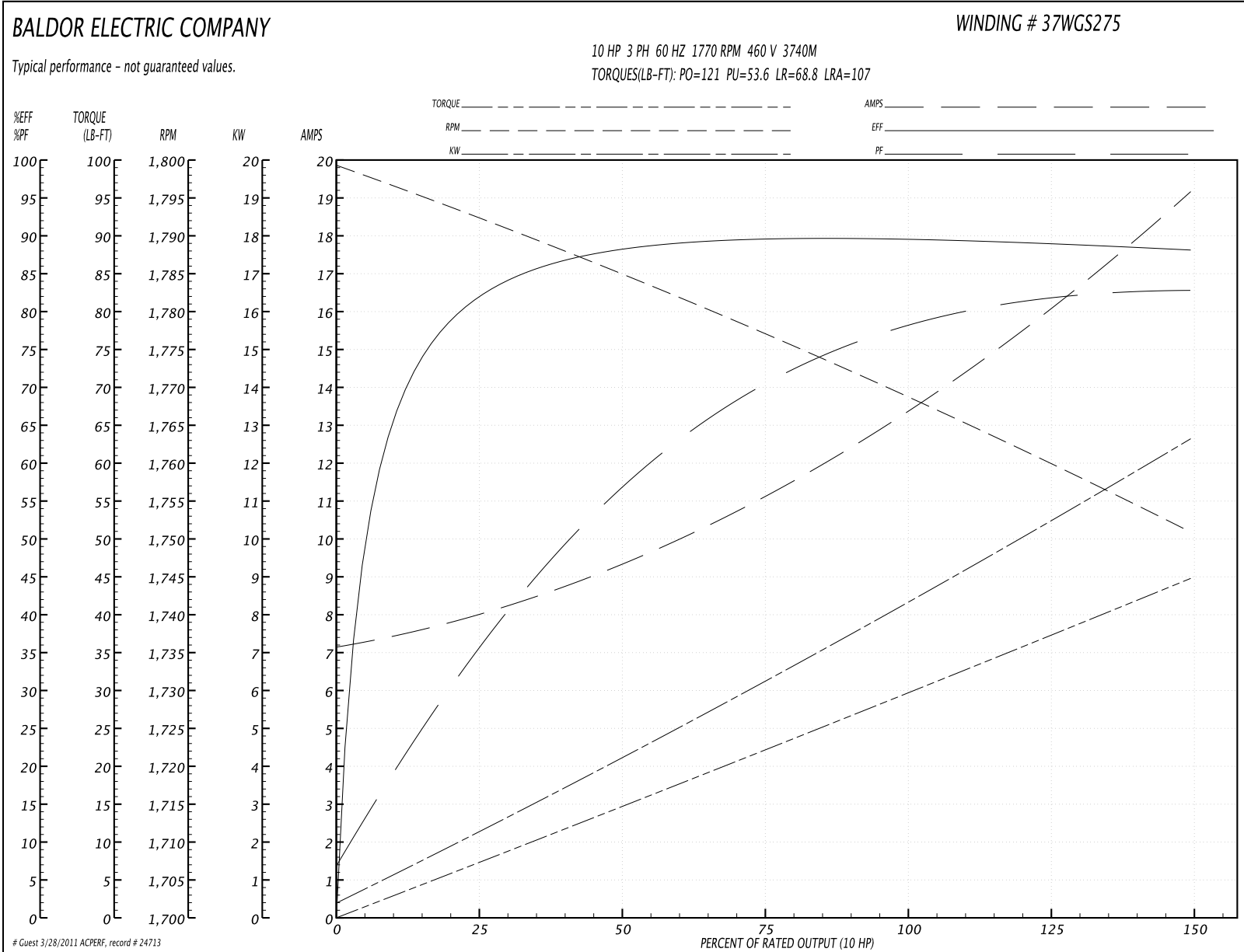
**Performance Data at 460V, 60Hz, 10.0HP (Typical performance - Not guaranteed values)**
**General Characteristics**

<b>Full Load Torque:</b>	29.5 LB-FT	<b>Start Configuration:</b>	DOL
<b>No-Load Current:</b>	7.31 Amps	<b>Break-Down Torque:</b>	121.0 LB-FT
<b>Line-line Res. @ 25°C.:</b>	1.16 Ohms A Ph / 0.0 Ohms B Ph	<b>Pull-Up Torque:</b>	53.6 LB-FT
<b>Temp. Rise @ Rated Load:</b>	78 C	<b>Locked-Rotor Torque:</b>	68.8 LB-FT
<b>Temp. Rise @ S.F. Load:</b>	94 C	<b>Starting Current:</b>	107.0 Amps

**Load Characteristics**

% of Rated Load	25	50	75	100	125	150	S.F.
<b>Power Factor:</b>	36.0	58.0	70.0	77.0	81.0	83.0	79.0
<b>Efficiency:</b>	81.4	88.2	89.6	89.7	89.0	88.0	89.3
<b>Speed:</b>	1793.0	1785.0	1777.0	1769.0	1760.0	1751.0	1764.0
<b>Line Amperes:</b>	7.82	9.21	11.0	13.5	16.2	19.0	15.1

Performance Graph at 460V, 60Hz, 10.0HP Typical performance - Not guaranteed values



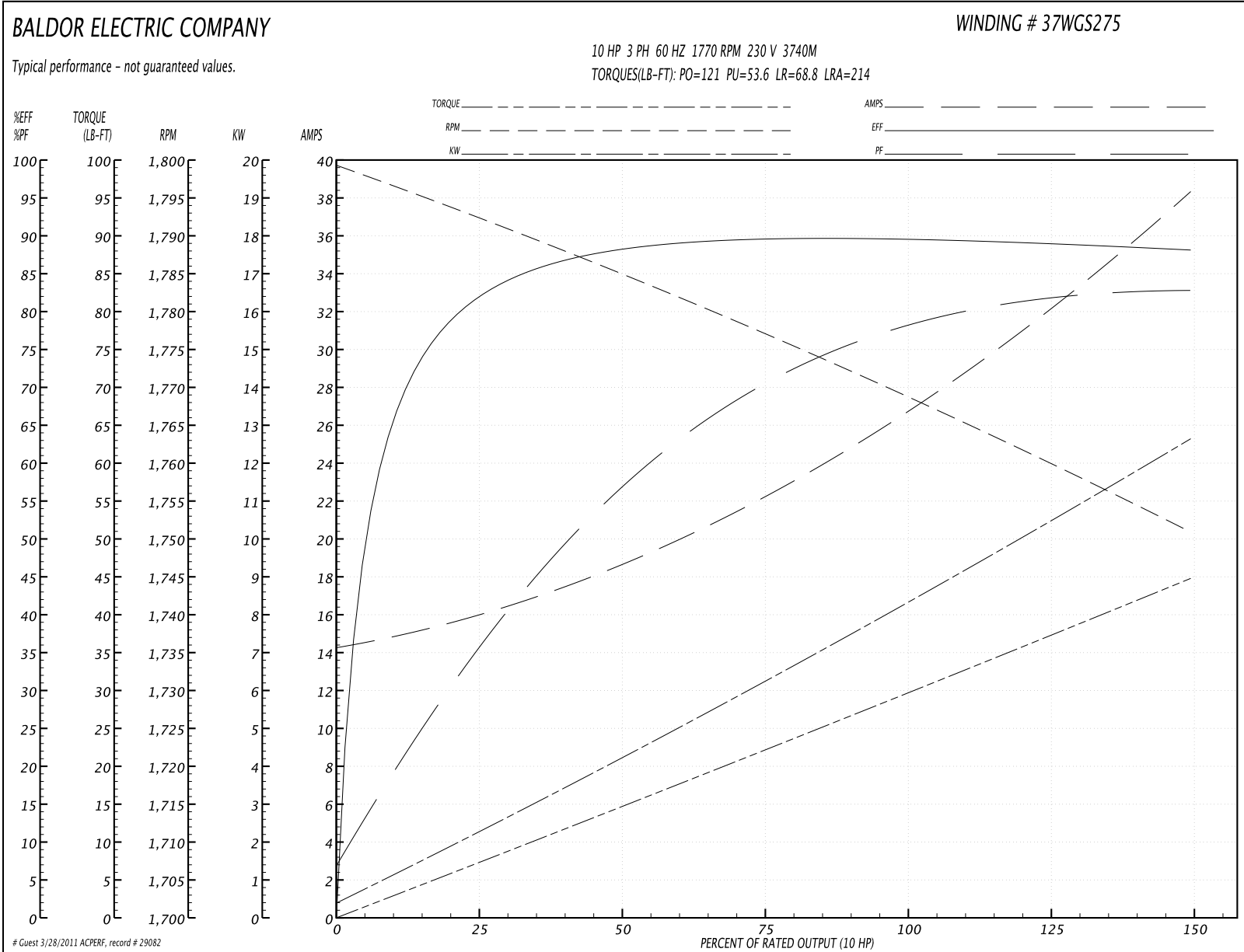
**Performance Data at 230V, 60Hz, 10.0HP (Typical performance - Not guaranteed values)**
**General Characteristics**

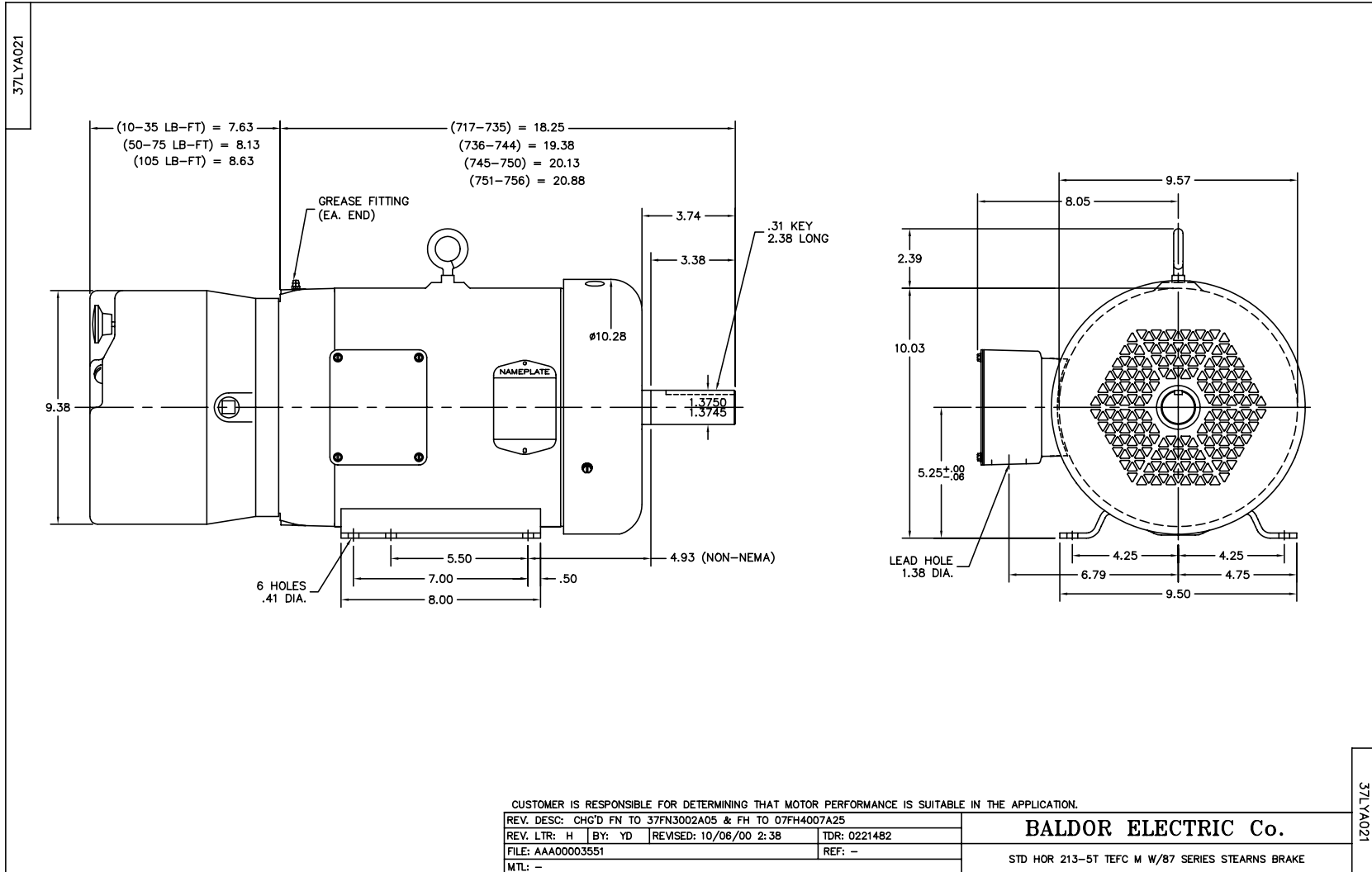
<b>Full Load Torque:</b>	29.5 LB-FT	<b>Start Configuration:</b>	DOL
<b>No-Load Current:</b>	14.6 Amps	<b>Break-Down Torque:</b>	121.0 LB-FT
<b>Line-line Res. @ 25°C.:</b>	0.288 Ohms A Ph / 0.0 Ohms B Ph	<b>Pull-Up Torque:</b>	53.6 LB-FT
<b>Temp. Rise @ Rated Load:</b>	78 C	<b>Locked-Rotor Torque:</b>	68.8 LB-FT
<b>Temp. Rise @ S.F. Load:</b>	92 C	<b>Starting Current:</b>	214.0 Amps

**Load Characteristics**

<b>% of Rated Load</b>	<b>25</b>	<b>50</b>	<b>75</b>	<b>100</b>	<b>125</b>	<b>150</b>	<b>S.F.</b>
<b>Power Factor:</b>	36.0	58.0	70.0	77.0	81.0	84.0	79.0
<b>Efficiency:</b>	81.4	88.5	89.4	89.6	89.0	88.1	89.2
<b>Speed:</b>	1793.0	1785.0	1777.0	1769.0	1760.0	1751.0	1764.0
<b>Line Amperes:</b>	15.6	18.4	22.0	27.0	32.4	38.0	30.2

Performance Graph at 230V, 60Hz, 10.0HP Typical performance - Not guaranteed values





CD0005

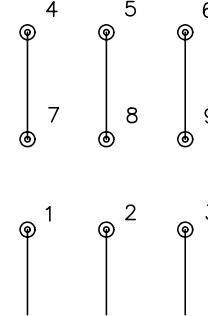


LOW VOLTAGE  
(2Y)



LINE

HIGH VOLTAGE  
(1Y)



LINE

NOTES:

1. INTERCHANGE ANY TWO LINE LEADS TO REVERSE ROTATION.
2. OPTIONAL THERMOSTATS ARE PROVIDED WHEN SPECIFIED.
3. ACTUAL NUMBER OF INTERNAL PARALLEL CIRCUITS MAY BE A MULTIPLE OF THOSE SHOWN ABOVE.
4. LEAD COLORS ARE OPTIONAL. LEADS MUST ALWAYS BE NUMBERED AS SHOWN.

REV. DESC: REVISE TO SHOW OPTIONAL COLORS			
REV. LTR: E	BY: JLP	REVISED: 01/19/99 10:15	TDR: 0171435
90000		FILE: AAA00005140	MDL: -
		MTL: -	

**BALDOR ELECTRIC Co.**

3PH, DV, 9 LEADS

CD0005