

# PRODUCT INFORMATION PACKET



Model No: A6C34DR6G  
Catalog No: 110478.00  
1HP..3450RPM.56H.DP.115/208-230V.1PH.60HZ.CONT.AUTOMATIC.40C.1.25SF.RESIL.  
Open Drip Proof (ODP)



Regal and Leeson are trademarks of Regal Beloit Corporation or one of its affiliated companies.  
©2018 Regal Beloit Corporation, All Rights Reserved. MC017097E



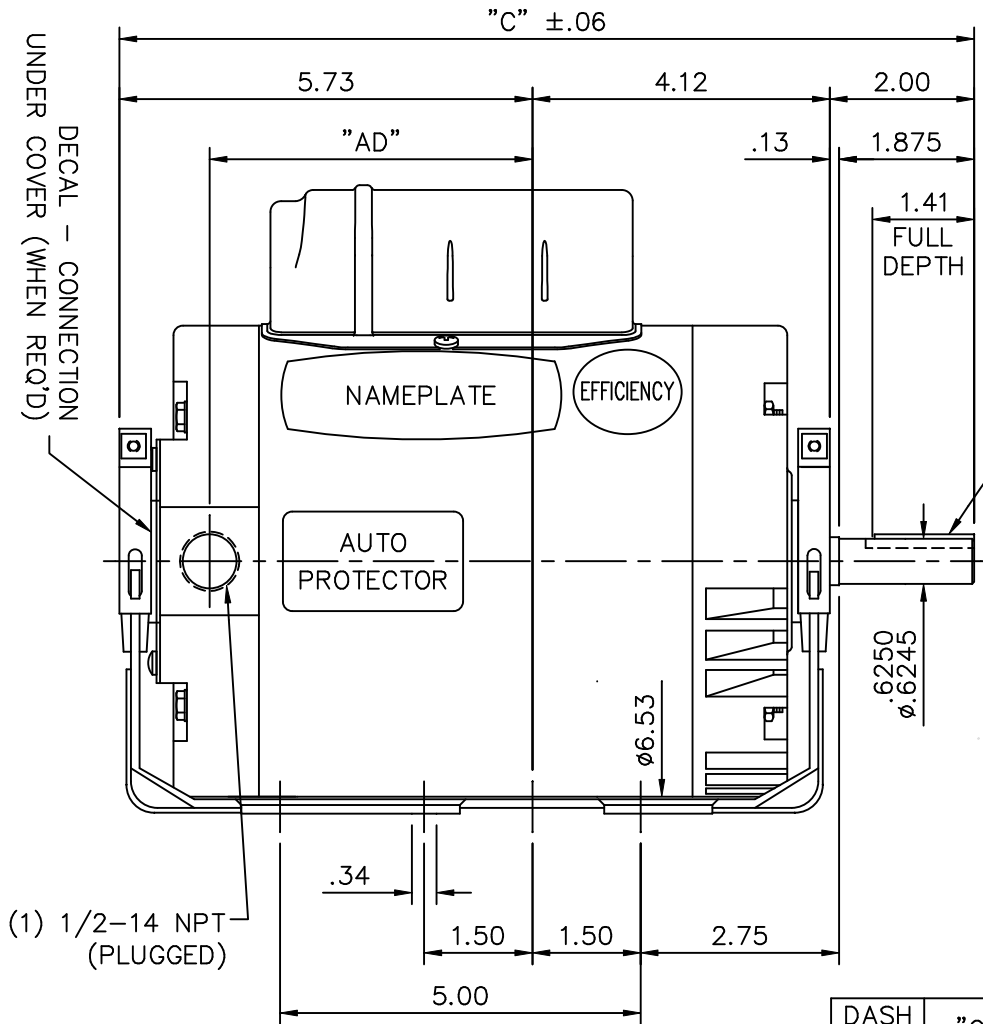


### Nameplate Specifications

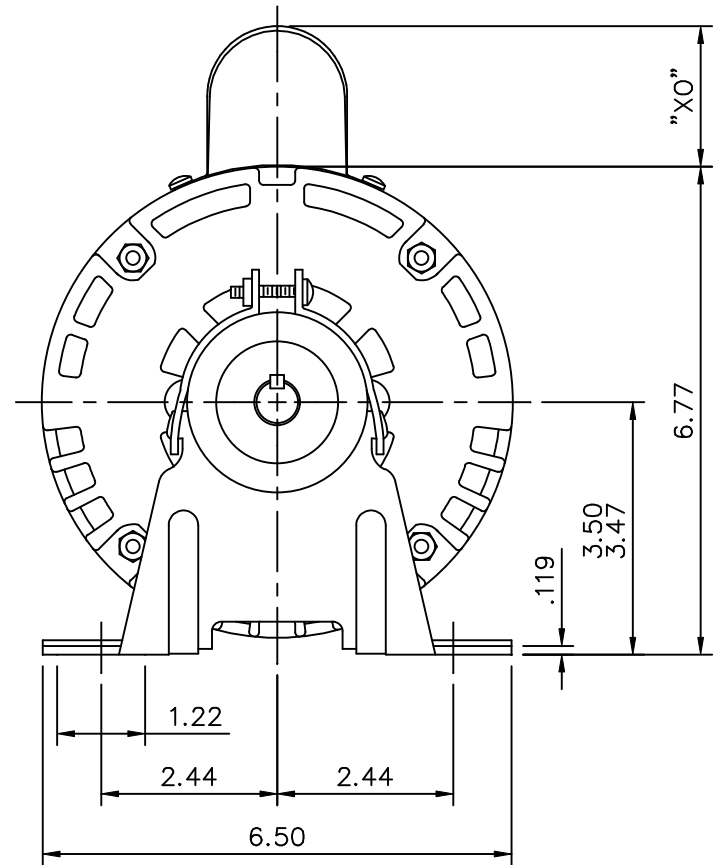
Output HP	1 Hp	Output KW	0.75 kW
Frequency	60 Hz	Voltage	115/208-230 V
Current	12.0/6.2-6.0 A	Speed	3450 rpm
Service Factor	1.25	Phase	1
Efficiency	70 %	Duty	Continuous
Insulation Class	B	Design Code	L
KVA Code	J	Frame	56H
Enclosure	Drip Proof	Overload Protector	Automatic
Ambient Temperature	40 °C	Drive End Bearing Size	6203
Opp Drive End Bearing Size	6203	UL	Recognized
CSA	Y	CE	N
IP Code	22		

### Technical Specifications


Electrical Type	Capacitor Start Induction Run	Starting Method	Across The Line
Poles	2	Rotation	Selective Counterclockwise
Mounting	Resilient Base	Motor Orientation	HORIZONTAL
Drive End Bearing	BALL	Opp Drive End Bearing	BALL
Frame Material	Rolled Steel	Shaft Type	NEMA 56
Overall Length	11.85 in	Frame Length	6.00 in
Shaft Diameter	0.625 in	Shaft Extension	1.88 in
Assembly/Box Mounting	F1 ONLY		
Outline Drawing	028598-600B	Connection Diagram	005003.01



.19 SQ X 1.38 KEY



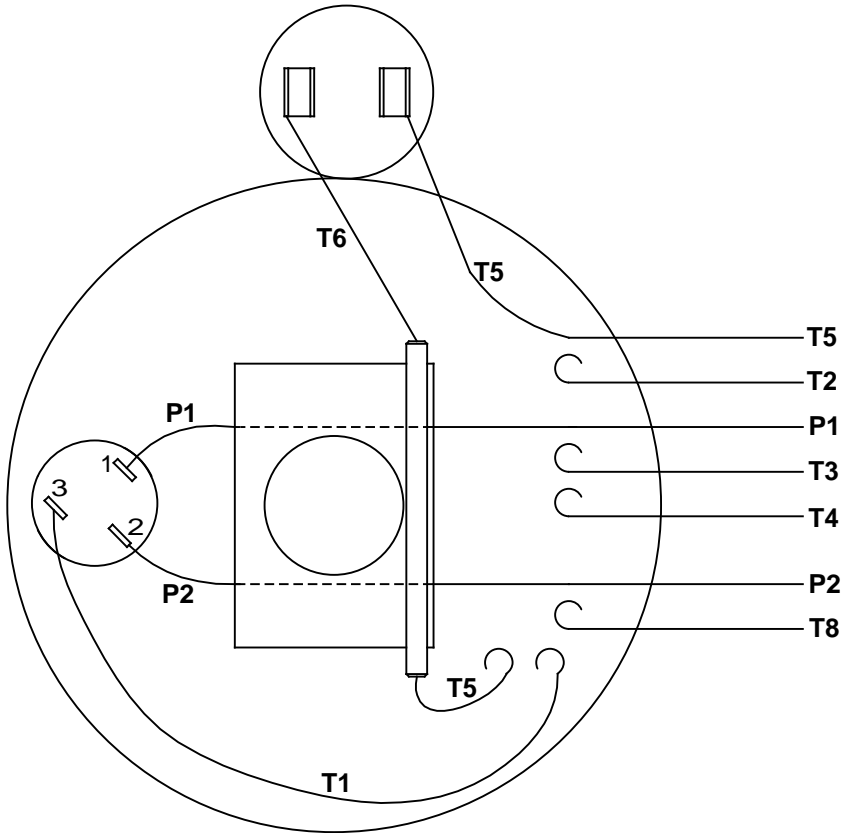
DASH NO.	"C"	"AD"	CAP. DASH	"X0"
550	11.35	3.97	A	1.48
600	11.85	4.47	B	1.95
650	12.35	4.97	C	2.19
700	12.85	5.47		
750	13.35	5.97		

				TOLERANCES UNLESS SPECIFIED		 ELECTRIC MOTORS GEARMOTORS AND DRIVES		DRAWN RDW 6/30/04	
				DEC. INCHES				CHK	
				.X ±.1				APPD SW 6/30/04	
				.XX ±.03				SCALE 3=8	
				.XXX ±.005				REF	
				.XXXX ±.0005		MAT'L.		FMF 110478	
NO.		REVISION		BY & DATE		FINISH		PREV	
THIS DRAWING IN DESIGN AND DETAIL IS OUR PROPERTY AND MUST NOT BE USED EXCEPT IN CONNECTION WITH OUR WORK ALL RIGHTS OF DESIGN AND INVENTION ARE RESERVED THIS IS AN ELECTRONICALLY GENERATED DOCUMENT - DO NOT SCALE THIS PRINT				RFP 6/30/04		CAD FILE 028598		SIZE A DRAWING NO. 028598	
				DIST				REV.	

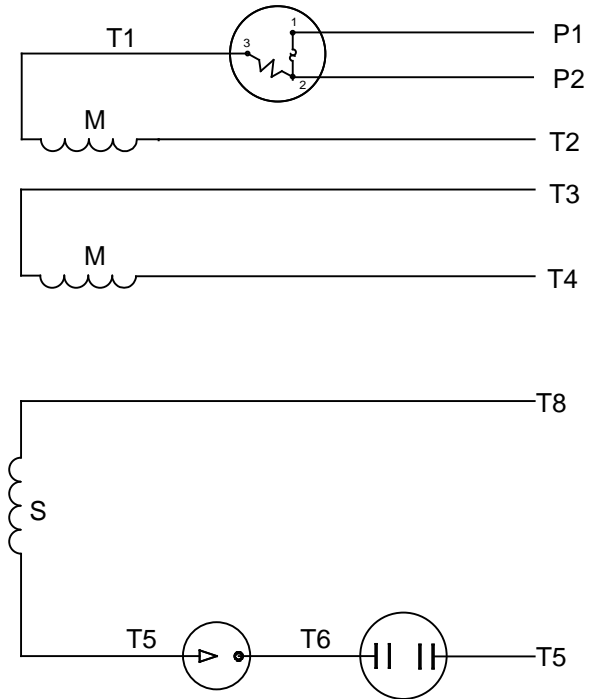


```
ERROR: syntaxerror  
OFFENDING COMMAND: --nostringval--  
STACK :
```

# VIEW FROM OUTSIDE OF MOTOR AT SWITCH END




# LINE LEADS



RBC PROPRIETARY AND CONFIDENTIAL INFORMATION  
 This document is the property of REGAL BELOIT CORPORATION ("RBC") including its subsidiaries and divisions and contains proprietary information of RBC. This document is loaned on the express condition that neither it nor the information contained therein shall be disclosed to others without the express written consent of RBC, and that the information shall be used by the recipient only as approved expressly by RBC. This document shall be returned to RBC upon its request. This document may be subject to certain restrictions under U.S. export control laws and regulations.

	ROTATION FACING LEAD END	L1	L2	JOIN	INSULATE SEPARATELY
HIGH VOLT	C.C.W.	P1	T4 T5	T2,T3 T8	P2
	C.W.	P1	T4 T8	T2,T3 T5	P2
LOW VOLT	C.C.W.	P1	T2,T4 T5	P2,T3 T8	---
	C.W.	P1	T2,T4 T8	P2,T3 T5	---

		TOLERANCES UNLESS SPECIFIED		 ELECTRIC MOTORS GEARMOTORS AND DRIVES	DRAWN ADH 07/25/73 CHK APPR JCW 07/26/77
		DEC	INCHES		SCALE 1:1
		.X	±.1		REF C4AMG1-2.4B
		.XX	±.01		FMF FIG 2-32
30	REDRAWN IN SOLIDWORKS	VJB 7/21/2011	.XXX ±.005	TITLE EXTERNAL WIRING DIAGRAM TYPE "C" W/PROTECTOR	PAGE OF
29	UPDATED TO CURRENT STANDARDS	DBT 06/30/97	.XXXX ±.0005	MAT'L DECAL - 004011	
NO	REVISION	BY & DATE	CHK ANG ±1/2°	FINISH	
THIRD ANGLE PROJECTION		RFP		PREV	SIZE DRAWING NO
		NETWORK FILE NAME 00500301			<b>A</b> <b>005003-01</b>
					REV <b>30</b>



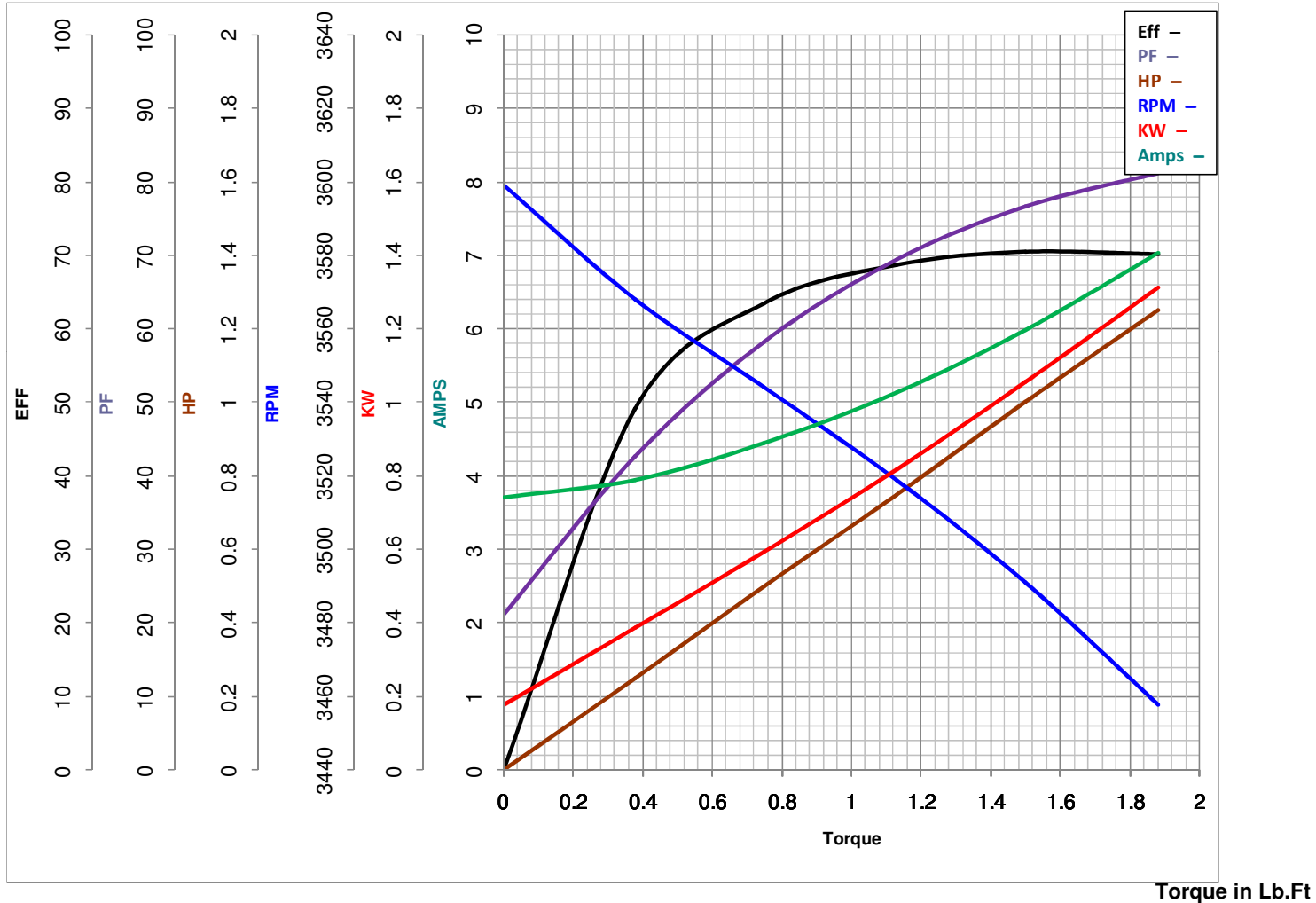
**LEESON ELECTRIC CORPORATION**  
 TYPICAL PERFORMANCE CURVE for AC MOTOR

Model No 110478.00

Curve at 230 Volts HP 1.00 PHASE 1  
60 HZ  
1 HP VOLTS 115/208-230

Catalog No 110478.00

HZ 60 RPM 3450



FL TORQUE	<u>1.5</u>	Lb.Ft	FL AMPS	<u>12/6.2-6</u>	
BD TORQUE	<u>4.0</u>	Lb.Ft	PU TORQUE	<u>3.8</u>	Lb.Ft
LR TORQUE	<u>5</u>	Lb.Ft	LR AMPS	<u>34</u>	
WINDING	C632211-3		Date	<u>3/26/2018</u>	