

CATALOG No: **BA4M002-4**

ISSUED: 27-Sep-18

**GENERAL INFORMATION**

HP	KW	Pole	RPM	Frame	Voltage	Hz	Phase	IP Rating
2	1.50	4	1800	90L	230/460 V	60	3	IP55

Enclosure	Ins. Class	Service Factor	Time Rating	NEMA Design	Rated Amb.	Rated Altitude
TEFC	F	1.25	Continuous	-	-15 to 40 C*	<3300 ft

**TYPICAL PERFORMANCE**

Efficiency (%)			Power Factor (%)		
Full Load	3/4 Load	1/2 Load	Full Load	3/4 Load	1/2 Load
86.5	86.0	84.5	0.74	0.65	0.52

LRT%	BDT %	Full Load Amps	Locked Rotor Amps	NEMA KVA Code
		460 V	460 V	
280	300	2.90	19.00	-

Weight*	Bearing Size		Oil Seal		Sound Level
Lbs.	Drive End	Non-Drive End	Drive End	Non-Drive End	dB(A)
35	62052Z	62032Z	-	-	-

\*Weights shown are estimated and based on standard foot mounted motor designs

**VFD DUTY INFORMATION**

	Variable Torque	Constant Torque	Rating
-	3 - 60 Hz	4 - 60 Hz	CSA Approved Class I; Div 2; Groups A, B, C, & D, T3
-	-	-	

**Click Link Below For Drawing**

<http://www.brookcrompton.com/Drawings/WP%20Outline%20Drawing/Metric/Aluminium/Foot/WP-DA90LWX.pdf>

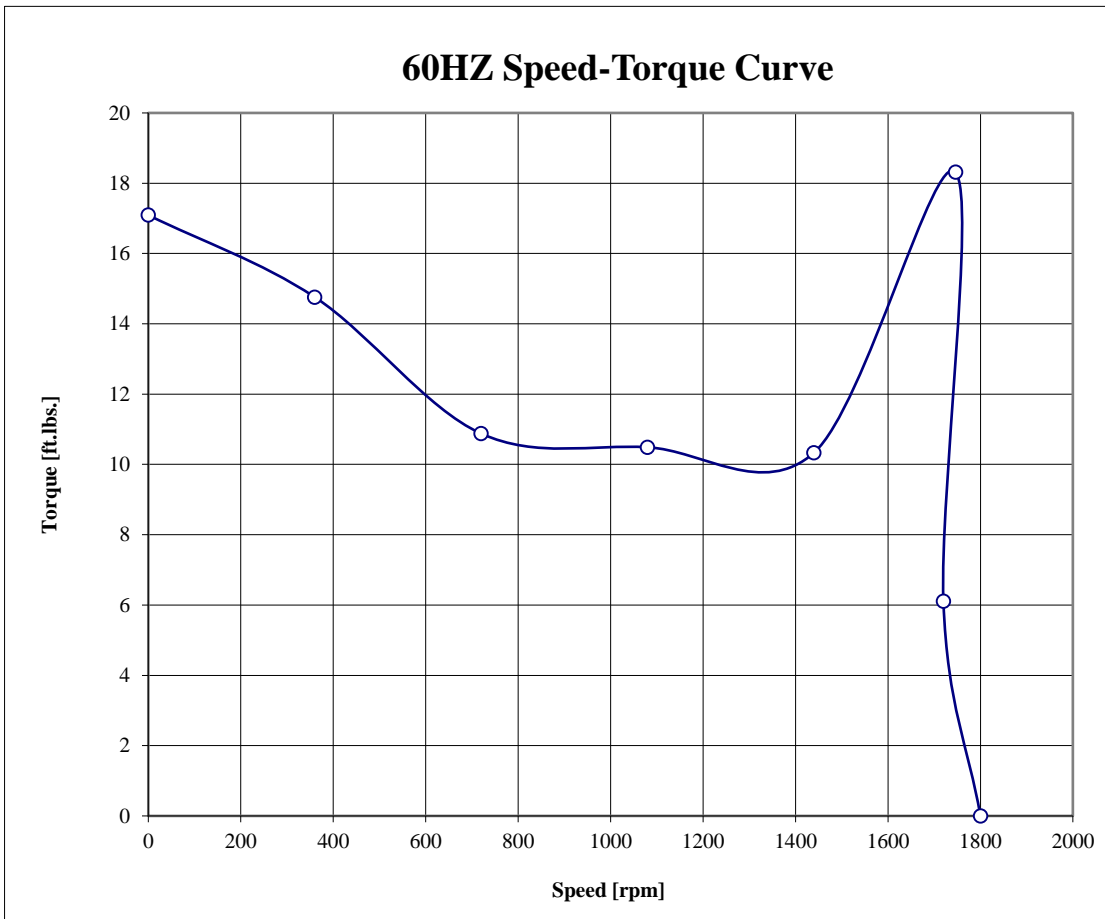
**Click Link Below For Connection Diagram**

<http://www.brookcrompton.com/Connections/Connection%20Diagram%209%20Lead%20X4%20IEC.pdf>

Notes:

<b>Motor: BA4M002-4</b>				
<b>Frame:</b>	90L	2 HP	460 V	
<b>Pole no.:</b>	4	6.1 ft.lbs.	60 Hz	1720 rpm

<b>Speed</b>	0	360	720	1080	1440	1746	1720	1800
<b>Speed ratios</b>	0	0.2	0.4	0.6	0.8	0.97	0.956	1
<b>Mot. torque ratios</b>	2.8	2.4	1.8	1.7	1.7	3	1	0
<b>Motor torque / ft.lbs.</b>	17	15	11	10	10	18	6	0



\*Curve base on calculated values



## 50HZ TECHNICAL DATA SHEET

CATALOG No: **BA4M002-4**

ISSUED: 27-Sep-18

### GENERAL INFORMATION

HP	KW	Pole	RPM	Frame	Voltage	Hz	Phase	IP Rating
2	1.50	4	1500	90L	400 V	50	3	IP55

Enclosure	Ins. Class	Service Factor	Time Rating	NEMA Design	Rated Amb.	Rated Altitude
TEFC	F	1.00	S1	-	-15 to 40 C°	<3300 ft

### TYPICAL PERFORMANCE

Efficiency (%)			Power Factor (%)		
Full Load	3/4 Load	1/2 Load	Full Load	3/4 Load	1/2 Load
82.8	83.0	81.0	0.70	0.58	0.46

LRT %	BDT %	Full Load Amps	Locked Rotor Amps	NEMA KVA Code
		400 V	400 V	
280	300	3.34	21.85	-

Weight*	Bearing Size		Oil Seal		Sound Level
Lbs.	Drive End	Non-Drive End	Drive End	Non-Drive End	dB(A)
35	62052Z	62032Z	-	-	-

\*Weights shown are estimated and based on standard foot mounted motor designs

### VFD DUTY INFORMATION

	Variable Torque	Constant Torque	Rating
-	3 - 60 Hz	4 - 60 Hz	CSA Approved Class I; Div 2; Groups A, B, C, & D, T3
-	-	-	

#### Click Link Below For Drawing

<http://www.brookcromptonna.com/Drawings/WP%20Outline%20Drawing/Metric/Aluminium/Foot/WP-DA90LWX.pdf>

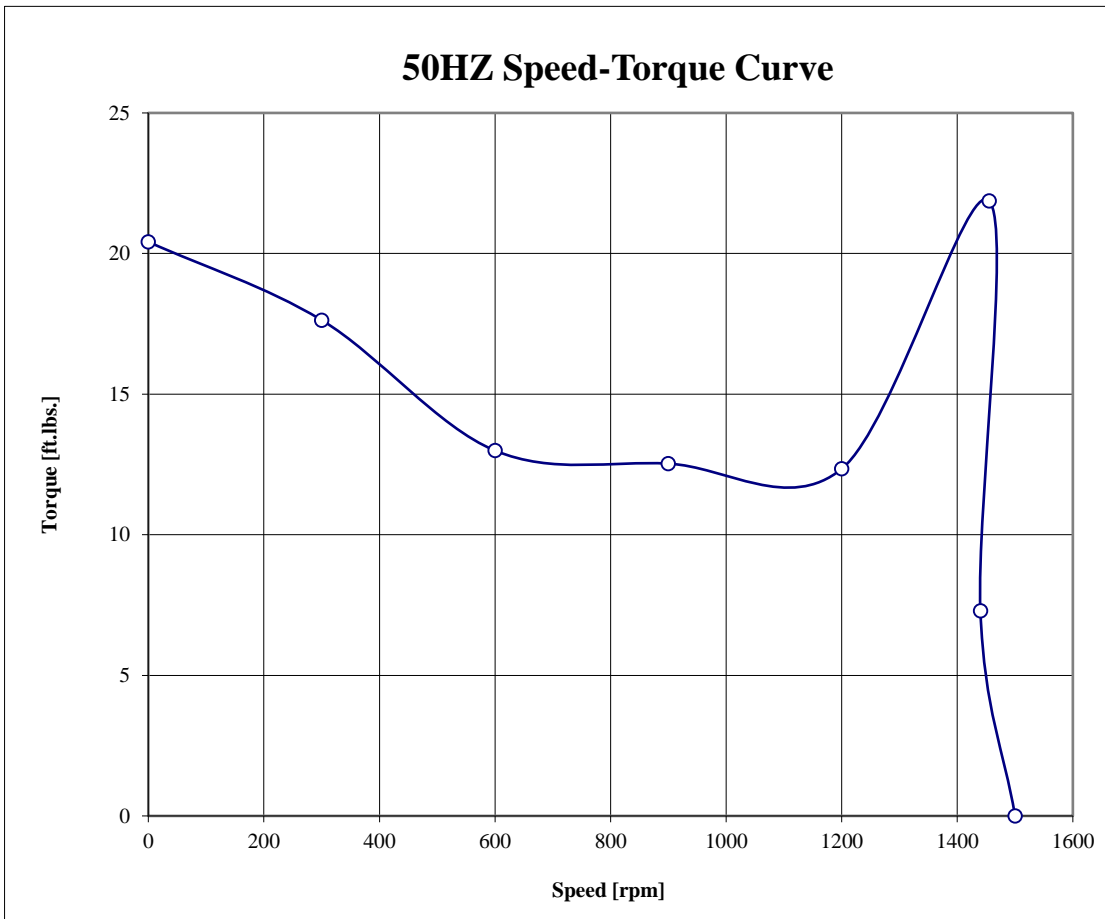
#### Click Link Below For Connection Diagram

<http://www.brookcromptonna.com/Connections/Connection%20Diagram%209%20Lead%20X4%20IEC.pdf>

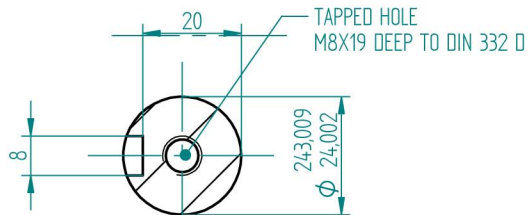
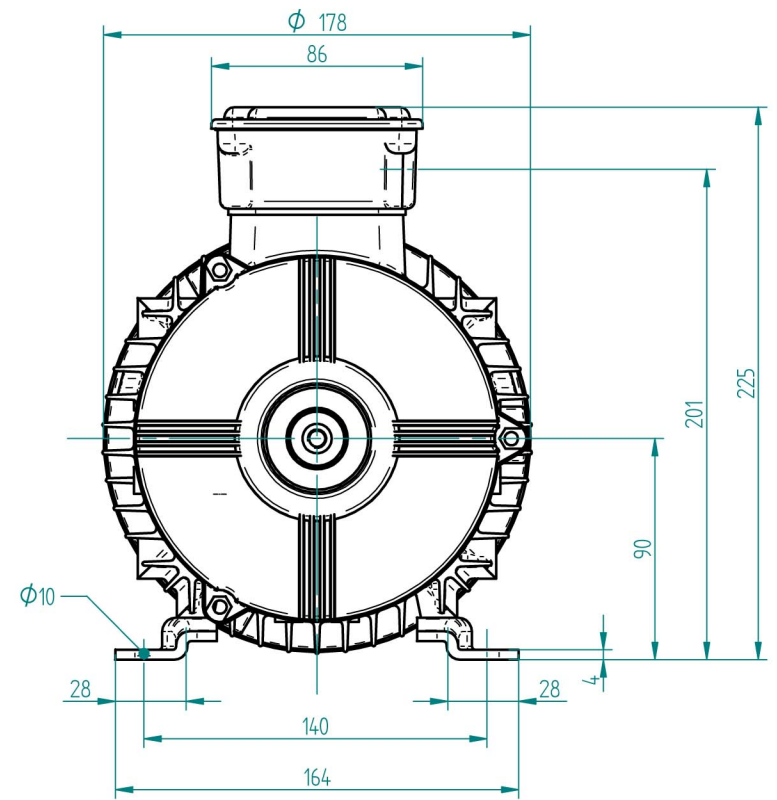
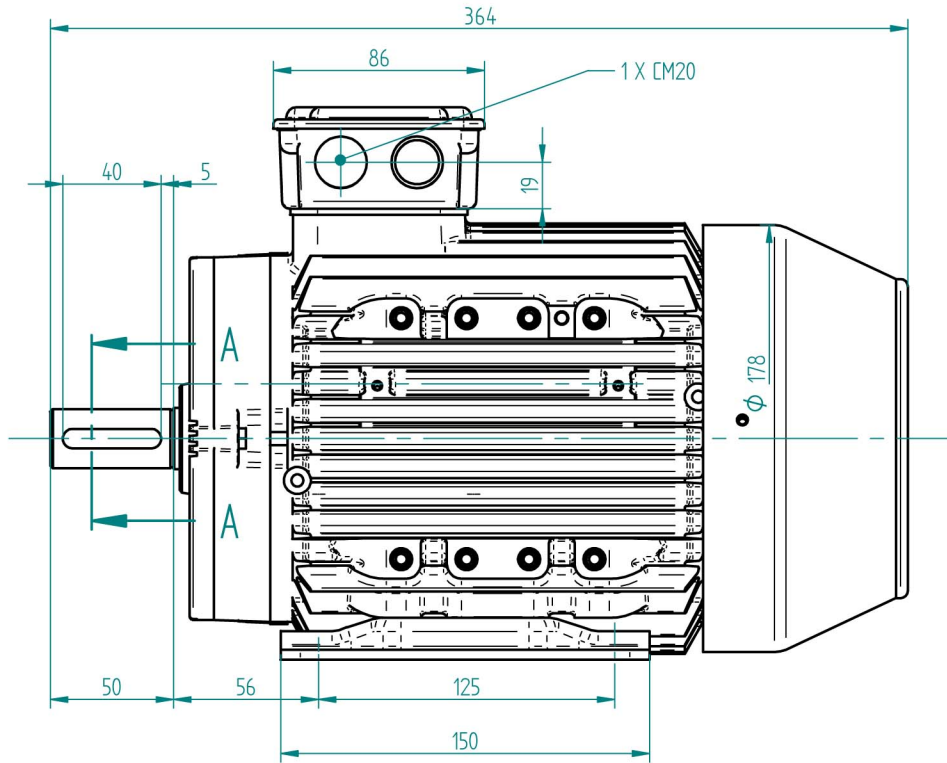
Notes:

<b>Motor: BA4M002-4</b>				
	<b>Frame:</b>	90L	2 HP	400 V
	<b>Pole no.:</b>	4	7.3 ft.lbs.	50 Hz
				1440 rpm

<b>Speed</b>	0	300	600	900	1200	1455	1440	1500
<b>Speed ratios</b>	0	0.2	0.4	0.6	0.8	0.97	0.960	1
<b>Mot. torque ratios</b>	2.8	2.4	1.8	1.7	1.7	3	1	0
<b>Motor torque / ft.lbs.</b>	20	18	13	13	12	22	7	0



\*Curve base on calculated values



Przekrój A-A  
1:1

TERMINAL BOX POSITION:- CAN BE ARRANGED AT EITHER 9,12 OR 3 O'CLOCK BY MOVING  
 CONDUIT ENTRIES:- TERMINAL BOX CAN BE ROTATED AT 90° INTERVALS  
 (CONDUIT ENTRY POSITION SHOWN FOR ILLUSTRATION ONLY)



FIRST ANGLE  
PROJECTION

**BROOK  
CROMPTON**

SHEET  
SIZE

A3

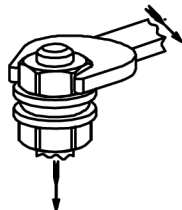
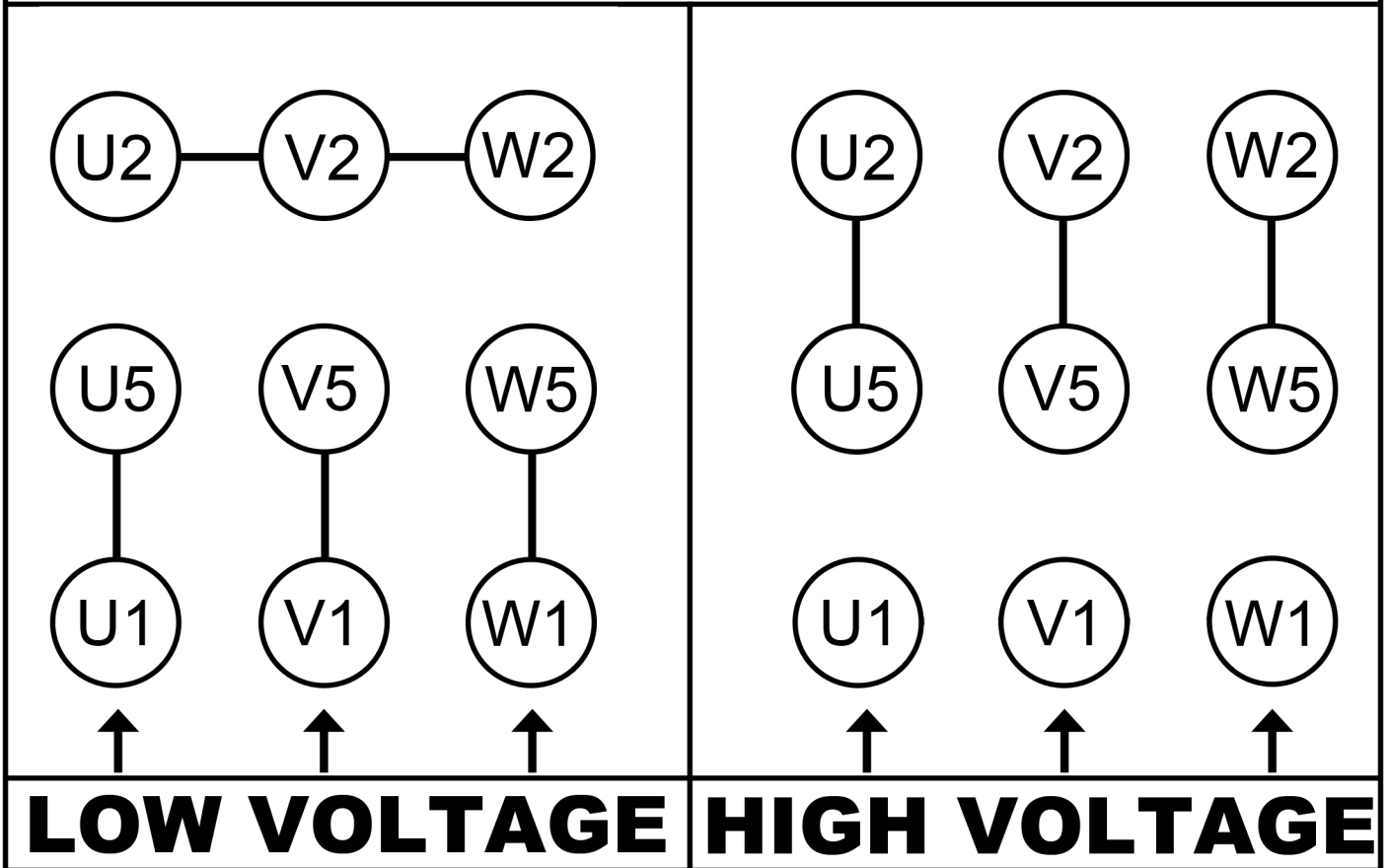
TITLE: OUTLINE DIMENSION DRAWING W ALUMINIUM TOTALLY ENCLOSED FAN COOLED  
 FRAME SIZE: WP-DA90LWX 4P

	NAME	DATE
DRAWN	DL	09-08-12
CHECKED		
SCALE	1:2	

DRG. No.	
DRG. REF.	
REVISION:	DATE:

# 9 LEAD CONNECTION - IEC

## CONNECTION DIAGRAM ACROSS-THE-LINE-STARTING



Nut	Torque
M4	1.1 Nm
M5	2.2 Nm