

BALDOR® • *RELIANCE*

Product Information Packet

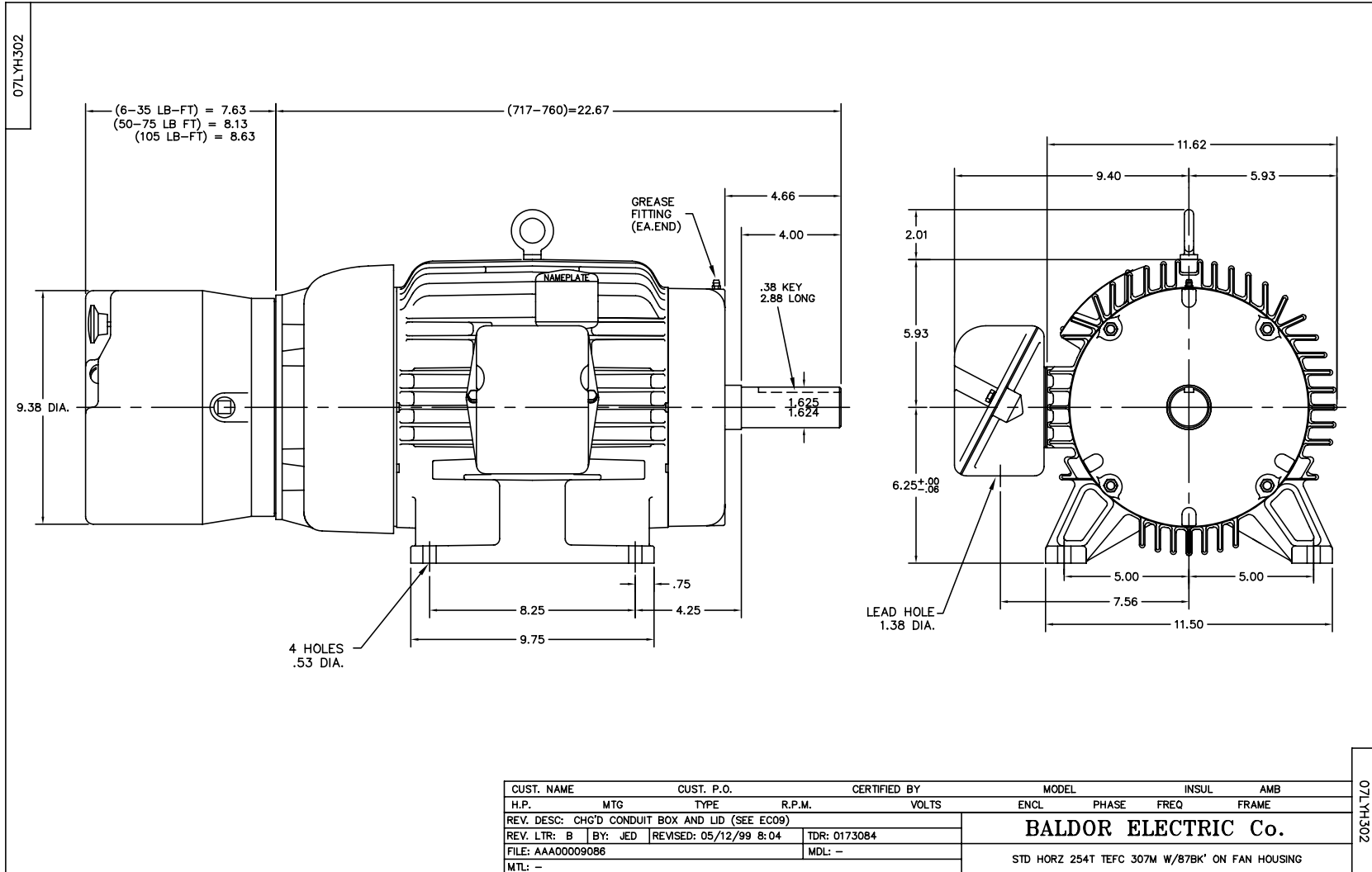
BM2333T

15HP,1755RPM,3PH,60HZ,254T,0748M,TEFC,F1

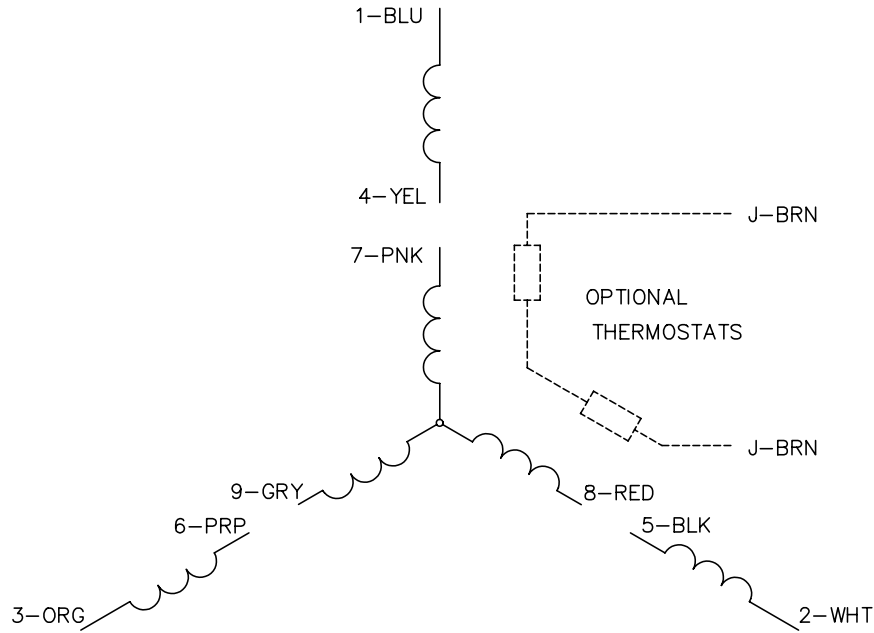
Product Detail							
Revision:	-	Status:	PRD/A	Change #:		Proprietary:	No
Type:	AC	Prod Type:	0748M	Elec. Spec:	07WGX798	CD Diagram:	CD0005
Enclosure	TEFC	Mfg Plant:		Mech Spec:	07H302	Layout:	07LYH302
Frame:	254T	Mounting:	F1	Poles:	04	Created Date:	08-19-2006
Base:	RG	Rotation:	R	Insulation:	F	Eff. Date:	09-18-2006
Leads:	9#14					Replaced By:	
Nameplate NP1256L							
CAT.NO.	BM2333T						
SPEC.	07H302X798G1						
HP	15						
VOLTS	208-230/460						
AMP	41-37.8/18.9						
RPM	1755						
FRAME	254T	HZ	60	PH	3		
SER.F.	1.15	CODE	J	DES	A	CLASS	F
NEMA-NOM-EFF	89.5	PF	82				
RATING	40C AMB-CONT						
CC		USABLE AT 208V					
DE	6309	ODE	6207				
ENCL	TEFC	SN					

Parts List			
Product ID	Description	Quantity	List Price
SA147695	SA 07H302X798G1	1.000	2,497.00
RA136730	RA 07H302X798G1	1.000	2,081.00
37FN3002A01SP	EXT FAN, PLASTIC	1.000	27.00
HW3201A01	1/2-13 EYEBOLT	1.000	15.00
09CB3002SP	CB W/1.38 LEAD HOLE FOR 37, 39, 307 & 30	1.000	21.00
09GS1000SP	GASKET-CONDUIT BOX, 1/16 THICK LEXIDE	1.000	3.00
51XW2520A12	.25-20 X .75, TAPTITE II, HEX WSHR SLTD	2.000	2.00
WD1000B17	KPA-8C BURNDY TERMINAL	1.000	3.00
51XW1032A06	10-32 X .38, TAPTITE II, HEX WSHR SLTD S	1.000	3.00
07EP1901A02	FR EP 07M 207 BRG, C-FACE FAN COVER MTG	1.000	225.00
HW4500A01	1641B(ALEMITE)400 UNIV, GREASE FITT	1.000	2.00
HW5100A07	W2816-030 WVY WASHER (WB)	1.000	3.00
07EP1116A01	ENDPLATE, MACH	1.000	118.00
HW4500A01	1641B(ALEMITE)400 UNIV, GREASE FITT	1.000	2.00
XY3118A12	5/16-18 HEX NUT DIRECTIONAL SERRATION	4.000	2.00
51XB1214A20	12-14X1.25 HXWSSLD SERTYB	1.000	2.00
07FH1002A03	FAN CVR.W/C-FACE ADAPTER,213-5TCZ FOR EP	1.000	421.00
WD4100A02	DP-1000 HEYCO PLUG OR 62MP1000 MICRO PL	1.000	2.00
10XN3118A52	5/16-18 X 3-1/4 HEX HEAD CAP SCR,GR.5,Z/	4.000	2.00
HW1001A31	LOCKWASHER 5/16, ZINC PLT.591 OD, .319 I	4.000	2.00
HA1103A13	#4 X 4 SCREEN FOR FAN CVR 07FH1002 (MR21	1.000	37.00
13XT0832A07	8-32X7/16 TYP 23 PAN HD SLT DX	4.000	2.00
09CB3501SP	CONDUIT BOX LID FOR 09CB3001 & 09CB3002	1.000	18.00
09GS1013SP	09 GS FOR 09CB3501 LID - LEXIDE	1.000	2.00

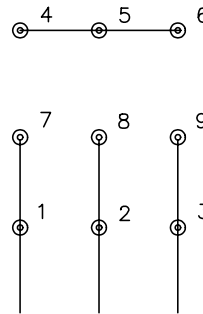
Parts List (continued)			
Product ID	Description	Quantity	List Price
51XW2520A12	.25-20 X .75, TAPTITE II, HEX WSHR SLTD	2.000	2.00
HW2501E18	KEY, 1/4 SQ X 2.000	1.000	2.00
84XN5013L12	.50-13 X .75 NYLOK TYPE HEX.SOC.HD.CAP S	4.000	2.00
HW2501G25	KEY, 3/8 SQ X 2.875	1.000	5.00
HA7000A03	KEY RETAINER RING 1.62 & 1.88 DIA. SH	1.000	2.00
MJ1000A02	GREASE, POLYREX EM EXXON	0.050	10.00
MG1000G27	PAINT- S9282E CHARCOAL GREY	0.036	4,000.00
85XU0407A04	#4-7 X 1/4 DRIVE PIN	2.000	2.00
LB1115	LABEL,LIFTING DEVICE (ON ROLLS0	1.000	2.00
HA3104A24	THRUBOLT- 5/16-18 X14.375 X	4.000	2.00
87BK6100EQF	87BK61000QF BR2703E01	1.000	2,009.00
LB1125C01	STD (STOCK) CARTON LABEL BALDOR WITH FLA	1.000	2.00
LC0005E01	CONN.DIA./WARNING LABEL (LC0005/LB1119)	1.000	2.00
NP1256L	NP STD LASER ENGRAVED, UL CSA CC, W/O TH	1.000	3.00
07PA1017	PACKAGE GP 07 LONG CRATE 34-1/2 X 17-1/2	1.000	162.00
10XL3807A32	3/8 X 2" LAG SCREW TDR #49106	2.000	2.00



CD0005

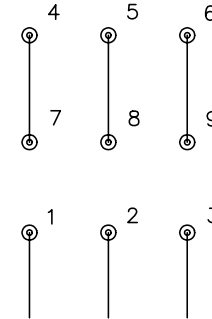


LOW VOLTAGE
(2Y)



LINE

HIGH VOLTAGE
(1Y)



LINE

NOTES:

1. INTERCHANGE ANY TWO LINE LEADS TO REVERSE ROTATION.
2. OPTIONAL THERMOSTATS ARE PROVIDED WHEN SPECIFIED.
3. ACTUAL NUMBER OF INTERNAL PARALLEL CIRCUITS MAY BE A MULTIPLE OF THOSE SHOWN ABOVE.
4. LEAD COLORS ARE OPTIONAL. LEADS MUST ALWAYS BE NUMBERED AS SHOWN.

REV. DESC: REVISE TO SHOW OPTIONAL COLORS

REV. LTR: E BY: JLP

REVISED: 01/19/99 10:15

TDR: 0171435

900000

FILE: AAA00005140

MDL: -

MTL: -

BALDOR ELECTRIC Co.

3PH, DV, 9 LEADS

CD0005