



A Regal Brand

Catalog # : 170032.60
Product Type: AC MOTOR
Description:

Model: 170032.60
Stock: Y

Quote: Price:

Date: 08/24/2018

Hazardous Loc
Explosion Proof
Class
Class

NONE

Temp Op Code
GROUP
GROUP

Brake Motors
FORCE
VDC
ADC
Brake Coil OHMs @25 C

Performance
Torque UOM LB-FT Inertia (WK²) 1.29 LB-FT²
Torque 30(Full Load) 84(Break Down) 50.2(Pull Up) 57(Locked Rotor)
CURRENT (amps) 23(Full Load) 0(Break Down) 0(Pull Up) 156(Locked Rotor)
Efficiency (%) 0(Full Load) 93.2(75% Load) 92.1(50% Load) 88(25% Load)
PowerFactor (Full Load) 87.5(75% Load) 82.2(50% Load) 65.4(25% Load)

Load Curve Data @60/50 HzVolts,20Horsepower

Load	Amps	KW	RPM	Torque	Eff	PF	Rise By Resis	Frame Rise
0.0	6.1	0.385	3599	0.0	0.0	7.9	0.0	-
0.25	8.35	4.348	3589	7.5	88.0	65.4	0.0	-
0.5	12.64	8.276	3575	15.0	92.1	82.2	0.0	-
0.75	17.53	12.227	3563	22.5	93.2	87.5	0.0	-
1.0	22.9	16.34	3549	30.0	92.6	89.6	48.0	-
1.25	28.62	20.367	3533	37.5	92.4	89.3	0.0	-
1.5	34.68	24.52	3517	45.0	91.7	88.7	0.0	-

SOURCE: CALCULATED GROUP: 3

Load Curve Data @60/50HzVolts,20Horsepower

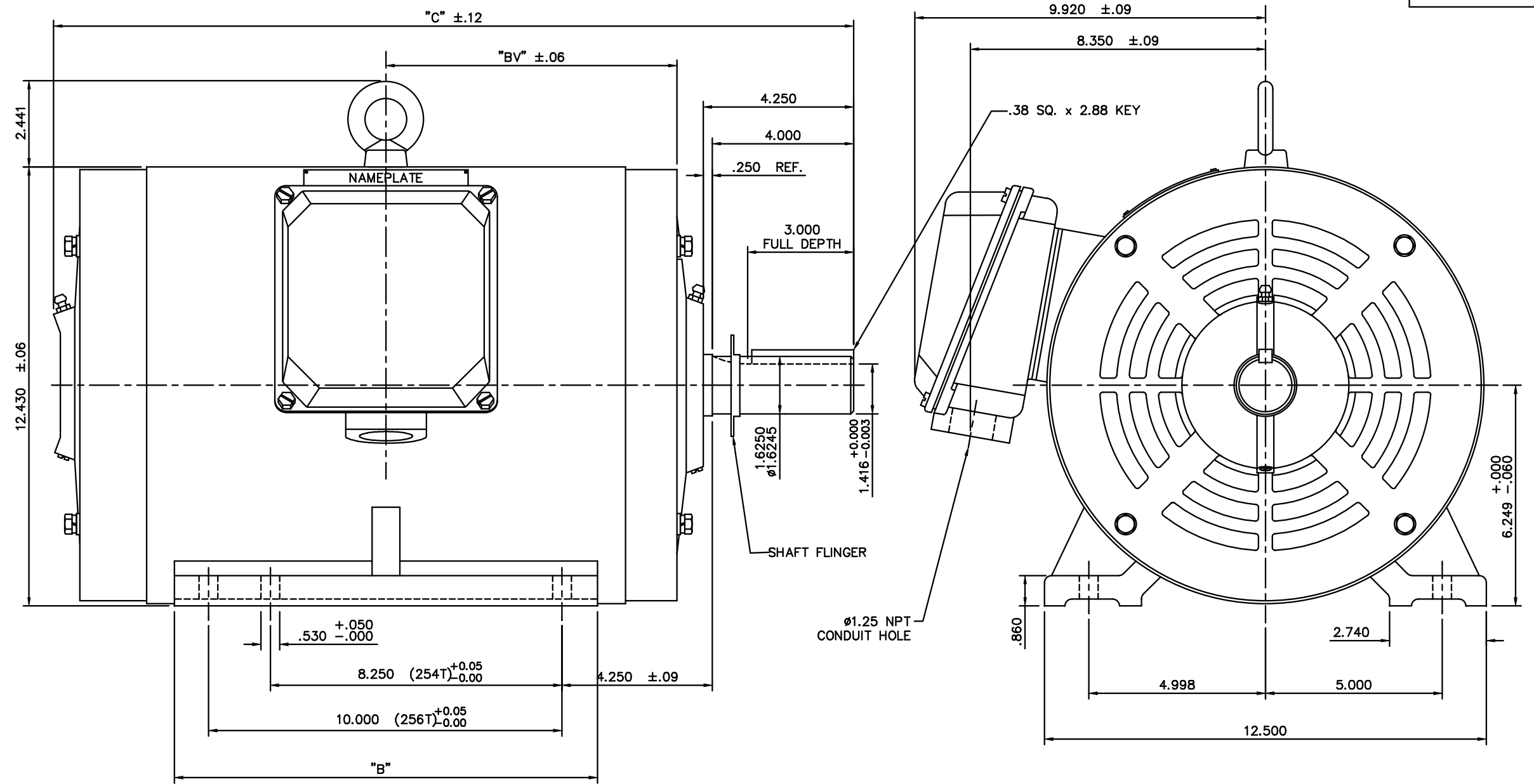
Load	Amps	KW	RPM	Torque	Eff	PF	Rise By Resis	Frame Rise
------	------	----	-----	--------	-----	----	---------------	------------

Load Curve Data Not Available

Quote: Price:

Date: 08/24/2018

169551-60



NOTE: 256T HAS 6 MTG. HOLES, USING BOTH 254T AND 256T "2F" LOCATIONS.

FRAME	"C"	"BV"	"B"
254T	20.94	8.23	10.25
256T	22.60	9.06	12.00

		TOLERANCES UNLESS SPECIFIED		LEESON ELECTRIC MOTORS GEARMOTORS AND DRIVES		DRAWN DRZ 05/23/01
		DEC.	INCHES			CHK
		.X	±.1			APPD
		.XX	±.03	TITLE		SCALE 3=8
		.XXX	±.005	ODP, RIGID MOUNT, NEW CON-BOX		REF
A	REVISED TO NEW BORDER FORMAT	DWF	12/14/01	.XXXX	±.0005	MAT'L CAST IRON
NO.	REVISION	BY & DATE	CHK	ANG	±1/2'	FINISH
THIS DRAWING IN DESIGN AND DETAIL IS OUR PROPERTY AND MUST NOT BE USED EXCEPT IN CONNECTION WITH OUR WORK ALL RIGHTS OF DESIGN AND INVENTION ARE RESERVED THIS IS AN ELECTRONICALLY GENERATED DOCUMENT - DO NOT SCALE THIS PRINT				RFP	CAD FILE	Drawing8
				SIZE	DRAWING NO.	REV.
				B	169551-60	A

```
ERROR: undefined  
OFFENDING COMMAND: fora
```

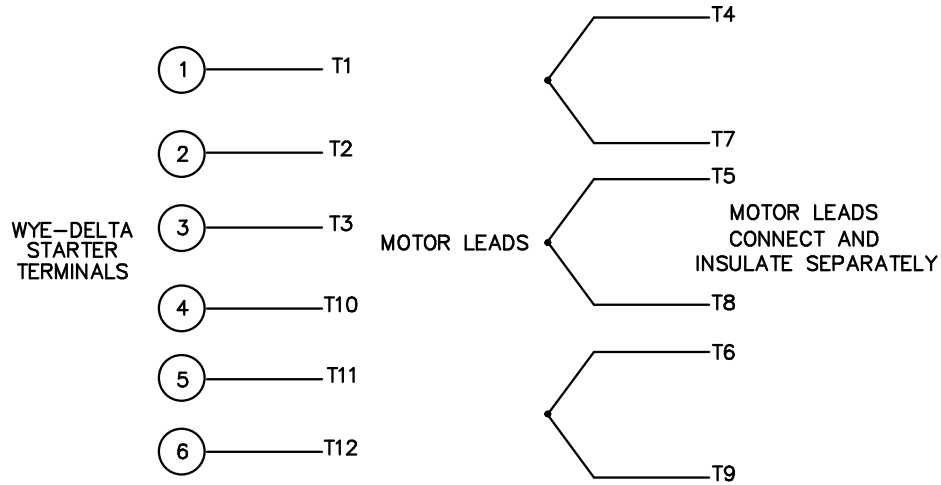
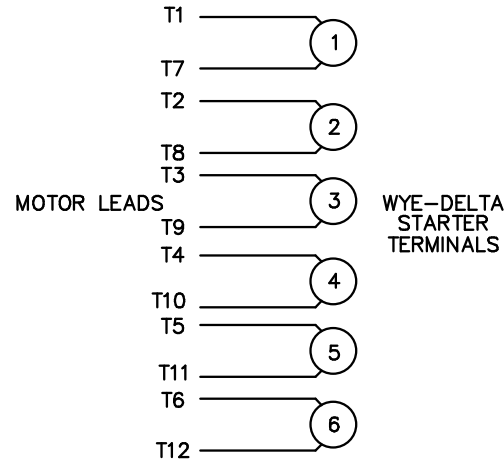
```
STACK:
```

```
{dup type /operator type eq {[ exch ] cvx def }{pop pop }ifelse }  
-dictionary-  
-dictionary-  
/Pscript_WinNT_Compat  
-dictionary-
```

WYE - DELTA STARTING USEABLE ON 2,4 AND 6 POLE MOTORS.

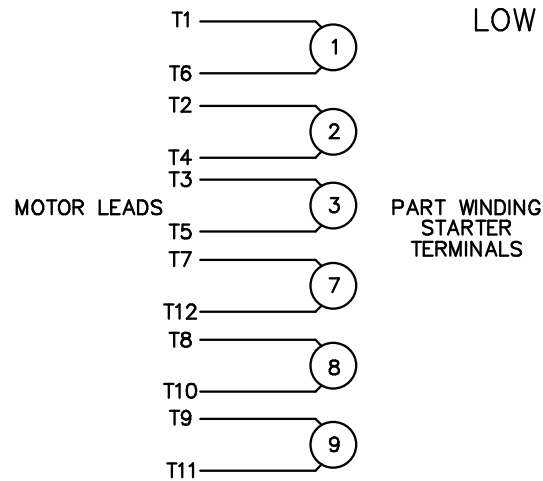
LOW VOLTAGE CONNECTION

HIGH VOLTAGE CONNECTION



REFER TO THE WYE-DELTA STARTER CONNECTION INSTRUCTIONS FOR PROPER CONNECTION OF POWER LINES TO STARTER.

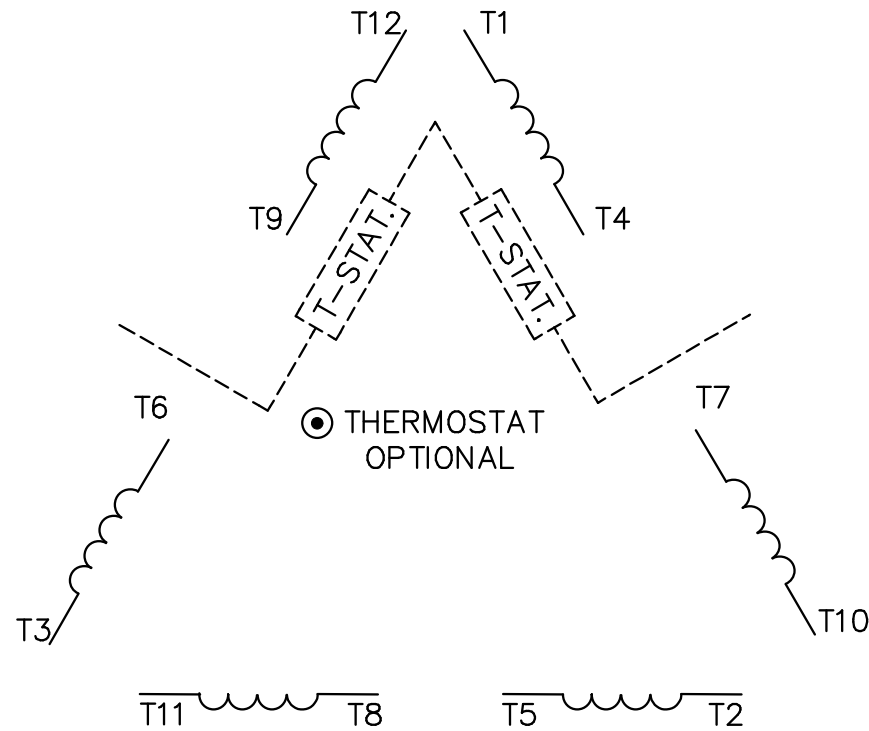
PART WINDING START USABLE ON 4 & 6 POLE MOTORS
LOW VOLTAGE CONNECTION ONLY



REFER TO THE PART WINDING STARTER INSTRUCTIONS FOR PROPER CONNECTION OF POWER LINES TO STARTER.

REFER TO THE CUTLER - HAMMER OR EQUIV. FOR PROPER SELECTION OF OVERLOAD HEATER COILS.

LINE LEADS



ROTATION CAN BE REVERSED BY INTERCHANGING ANY TWO LINE LEADS
⊙ RED LEADS OR P1, P2, FOR N/C THERMOSTAT

ACROSS THE LINE START & RUN

	LINE 1	LINE 2	LINE 3	JOIN & INSULATE SEPARATELY
HIGH VOLT	T1,T12	T2,T10	T3,T11	(T4,T7) (T5,T8) (T6,T9)
LOW VOLT	T1,T6 T7,T12	T2,T4 T8,T10	T3,T5 T9,T11	



ELECTRIC MOTORS
GEARMOTORS
AND DRIVES

DRAWN WLW 09/08/77
CHK RPB 09/12/77
APPD JCW 09/12/77

NO.	REVISION	BY & DATE	CHK	TOLERANCES UNLESS SPECIFIED		FINISH
				DEC.	INCHES	
03	REV'D LOW VOLTAGE CONN. LEADS PER ELEC.	BJB 06/07/00		.X	±.1	
02	ADDED T-STAT. NOTES PER ELECTRICAL	KMM 06/02/98		.XXX	±.005	
01	REDRAWN TO CAD	DBT 06/02/97		.XXXX	±.0005	
				ANG	±1/2°	

TITLE	DELTA - WYE CONNECTION DIAGRAM	SCALE	1=1
MAT'L.		REF	
FINISH		FMP	
RFP	CAD FILE	SIZE	DRAWING NO.
DIST	00417201	A	004172-01
			REV. 03