

BALDOR® • RELIANCE

Product Information Packet

ELECTRIC MOTOR WHOLESAL.COM

CJM345

.5HP,1725RPM,3PH,60HZ,56J,1714M,OPEN,F1

Part Detail							
Revision:	M	Status:	PRD/A	Change #:		Proprietary:	No
Type:	AC	Prod. Type:	1714M	Elec. Spec:	17WG284	CD Diagram:	
Enclosure:	OPEN	Mfg Plant:		Mech. Spec:	17E179	Layout:	
Frame:	56J	Mounting:	F1	Poles:	04	Created Date:	
Base:	RG	Rotation:	R	Insulation:	B	Eff. Date:	04-13-2011
Leads:	9#18	Literature:		Elec. Diagram:		Replaced By:	

Nameplate NP1203							
CAT.NO.		ENCL		OPEN			
SPEC.	17E179W284G1	FRAME		56J			
HP	.5						
VOLTS	230/460						
AMPS	2/1						
RPM	1725						
HZ	60	PH		3	CL		B
SER.F.	1.25	DES		B	CODE		L
FL EFF	72	PF		68			
RATING	40C AMB-CONT						
SF AMP	2.1/1.05	USABLE AT 208V		2.1			
S/N							
MANUAL	N	AUTO		N	NONE		Y

Parts List		
Part Number	Description	Quantity
SA073213	SA 17E179W284G1	1.000 EA
RA066957	RA 17E179W284G1	1.000 EA
11XT0832G06	8-32 X 3/8 TY 23 TAPPING	1.000 EA
51XW0832A07	8-32 X .44, TAPTITE II, HEX WSHR SLTD SE	4.000 EA
HW5100A03SP	WAVY WASHER (W1543-017)	1.000 EA
34EP3401A07	PU ENDPLATE, MACH	1.000 EA
51XN2520A08	SCREW, HEX WS SLT, SERR .25-20 X .50	2.000 EA
17AD0001A01	BAFFLE PLATE, MACH. FOR SPL 5.25 DIA. O.	1.000 EA
51XT0632A06	6-32X3/8 TY23 HXWS SLDSR	4.000 EA
34FH4500A13	DRIP/FAN COVER, STAMPED W/2 #26 DRILL HO	1.000 EA
51XW0832A07	8-32 X .44, TAPTITE II, HEX WSHR SLTD SE	2.000 EA
34CB4501SP	TERMINAL BOX LID, STAMPED X (PLATED)	1.000 EA
51XW0832A07	8-32 X .44, TAPTITE II, HEX WSHR SLTD SE	2.000 EA
HW4600B39SP	SEAL 0.550 X .790 X .180 FACE SEALING	1.000 EA
17EP3200BT06	FR ENDPLATE, MACH W/HUB FOR DRIP COVER &	1.000 EA
NS2500A01	INSULATOR, AUTO THER PROT	1.000 EA
SP1040A01	TERM BOARD, MODEL 17 SW FOR 3/4" THERMAL	1.000 EA
HA3100A13	THRUBOLT 10-32 X 7.750	4.000 EA
LB1172A01	CUSTOM MTR CARTON LABEL LASER PRINTER	1.000 EA
LC0005	CONN.DIA.,TY M,9-LD,DUAL VOLT,REVERSING	1.000 EA
LB5040	INSTRUCTION TAG, AC & DC	1.000 EA
NP1203	NP LABEL (FOR COMMERCIAL MOTOR)	1.000 EA
34PA1002	PACKING GROUP, BALDOR	1.000 EA

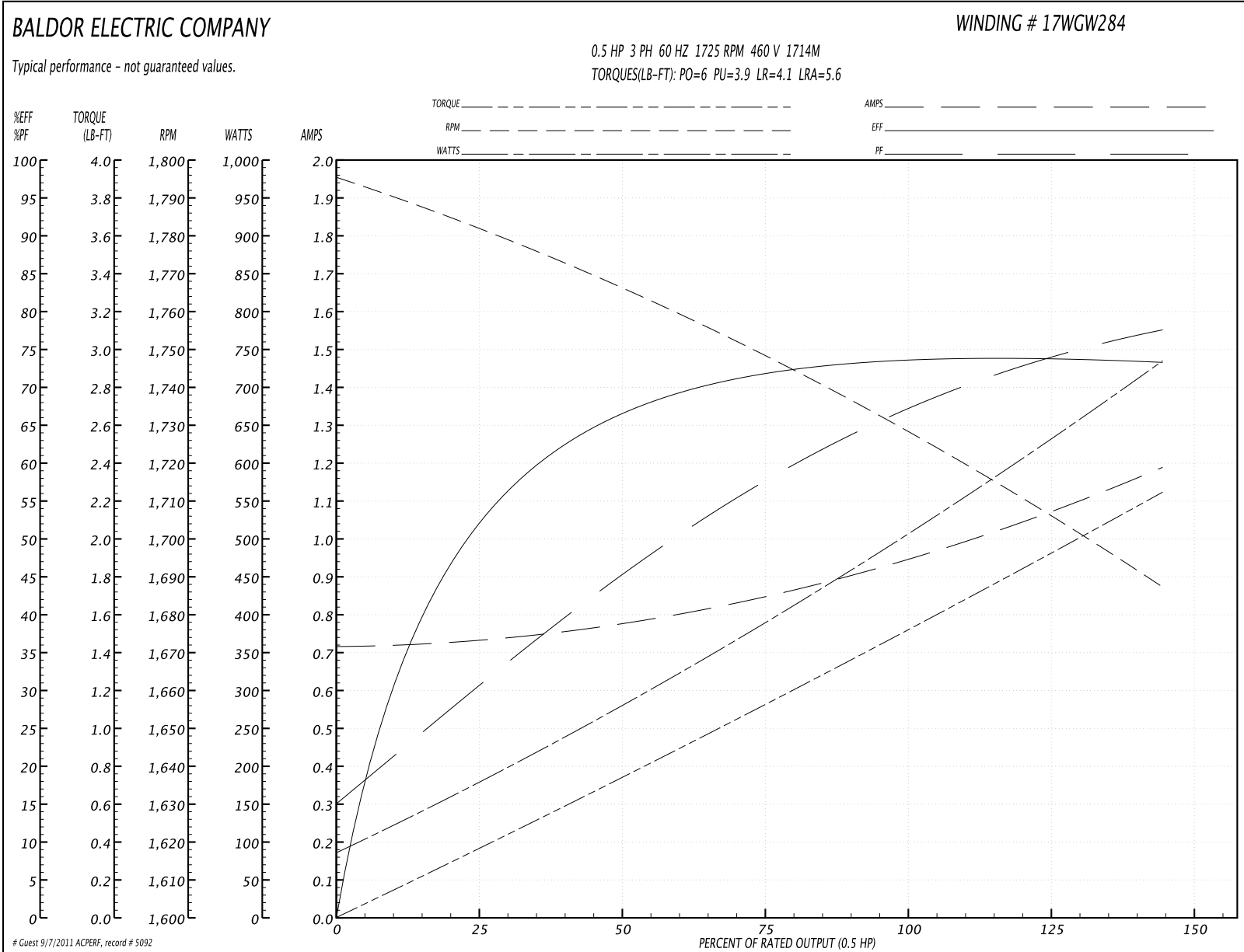
Performance Data at 460V, 60Hz, 0.5HP (Typical performance - Not guaranteed values)
General Characteristics

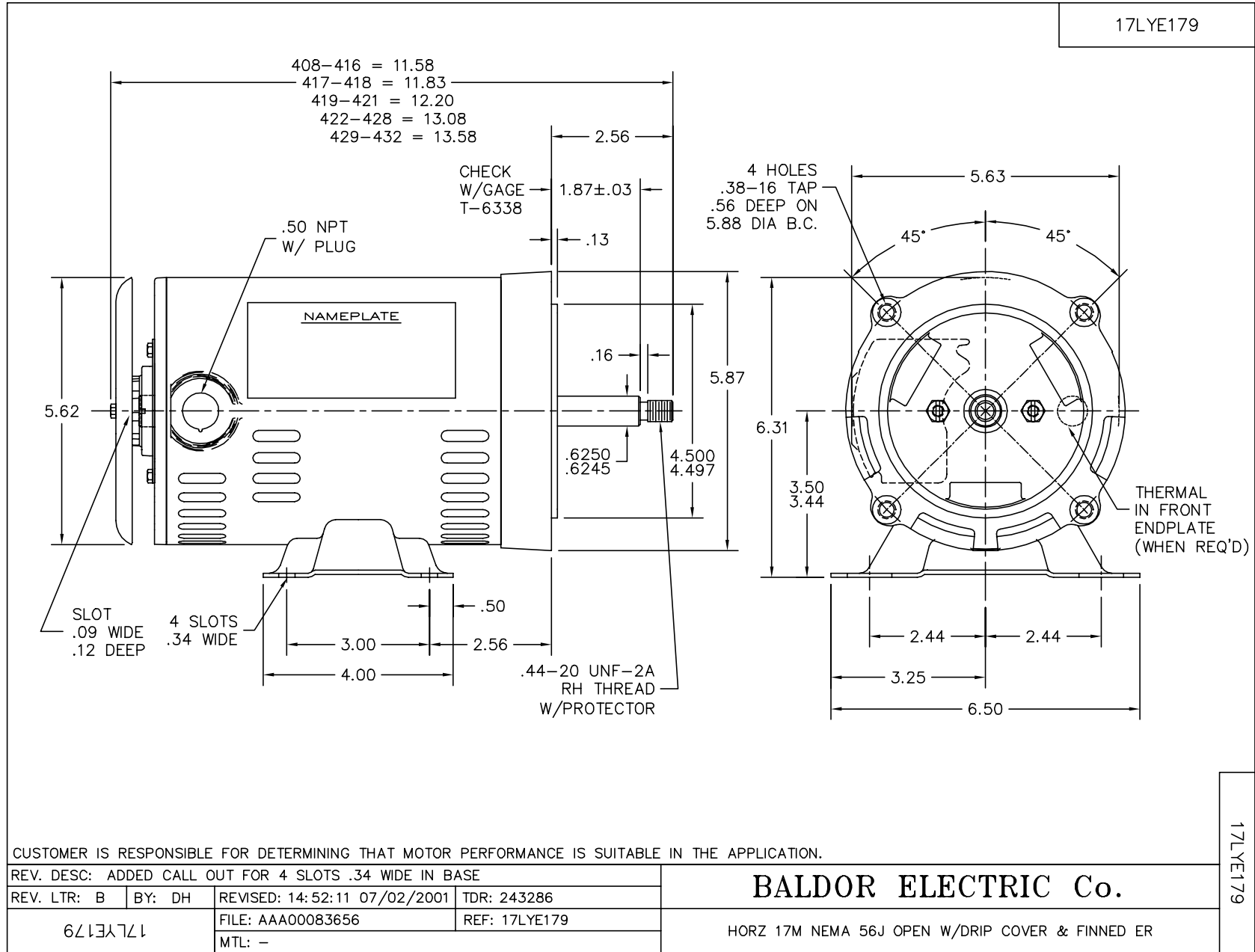
Full Load Torque:	1.5 LB-FT	Start Configuration:	DOL
No-Load Current:	0.71 Amps	Break-Down Torque:	6.0 LB-FT
Line-line Res. @ 25°C.:	40.6 Ohms A Ph / 0.0 Ohms B Ph	Pull-Up Torque:	3.9 LB-FT
Temp. Rise @ Rated Load:	51 C	Locked-Rotor Torque:	4.1 LB-FT
Temp. Rise @ S.F. Load:	61 C	Starting Current:	5.6 Amps

Load Characteristics

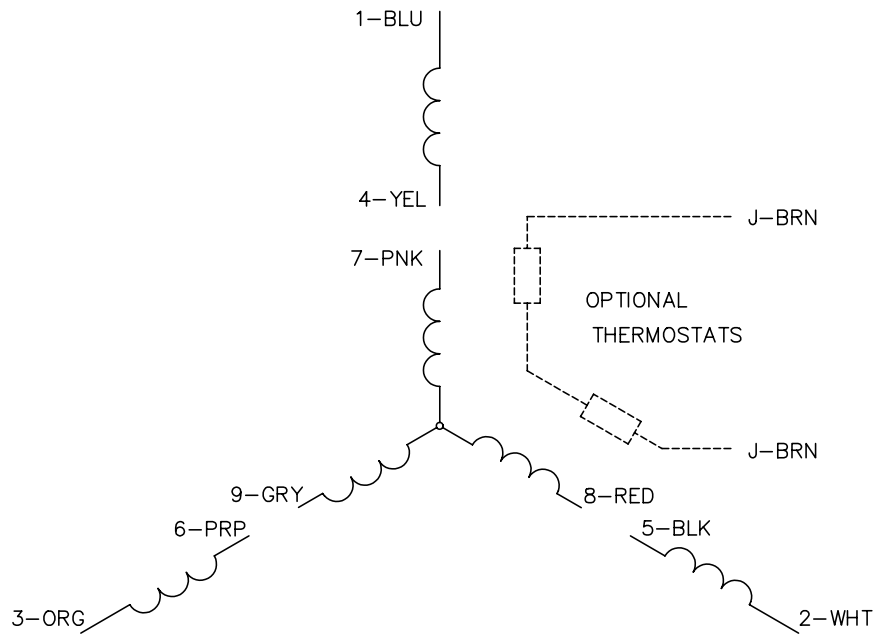
% of Rated Load	25	50	75	100	125	150	S.F.
Power Factor:	32.0	46.0	59.0	68.0	75.0	81.0	0.0
Efficiency:	52.3	66.2	71.8	73.7	74.1	73.1	0.0
Speed:	1781.0	1766.0	1748.0	1729.0	1711.0	1686.0	0.0
Line Amperes:	0.74	0.78	0.85	0.94	1.04	1.2	1.04

Performance Graph at 460V, 60Hz, 0.5HP Typical performance - Not guaranteed values

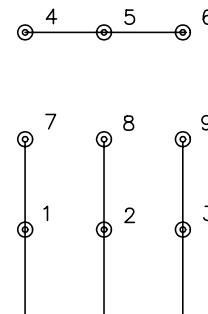




CD0005

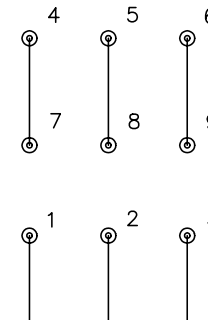


LOW VOLTAGE
(2Y)



LINE

HIGH VOLTAGE
(1Y)



LINE

NOTES:

1. INTERCHANGE ANY TWO LINE LEADS TO REVERSE ROTATION.
2. OPTIONAL THERMOSTATS ARE PROVIDED WHEN SPECIFIED.
3. ACTUAL NUMBER OF INTERNAL PARALLEL CIRCUITS MAY BE A MULTIPLE OF THOSE SHOWN ABOVE.
4. LEAD COLORS ARE OPTIONAL. LEADS MUST ALWAYS BE NUMBERED AS SHOWN.

REV. DESC: REVISE TO SHOW OPTIONAL COLORS			
REV. LTR: E	BY: JLP	REVISED: 01/19/99 10:15	TDR: 0171435
900000		FILE: AAA00005140	MDL: -
		MTL: -	

BALDOR ELECTRIC Co.

3PH, DV, 9 LEADS

CD0005