

BALDOR® • RELIANCE

Product Information Packet

ELECTRIC MOTOR WHOLESAL.COM

CM2333T

15HP, 1760RPM, 3PH, 60HZ, 254, TC, 0756M, TEFC

| Part Detail | | | | | | | |
|-------------|-------|-------------|-------|----------------|----------|---------------|------------|
| Revision: | E | Status: | INA/A | Change #: | | Proprietary: | No |
| Type: | AC | Prod. Type: | 0756M | Elec. Spec: | 07WGX739 | CD Diagram: | |
| Enclosure: | TEFC | Mfg Plant: | | Mech. Spec: | 07H204 | Layout: | |
| Frame: | 254TC | Mounting: | F1 | Poles: | 04 | Created Date: | 10-28-2005 |
| Base: | RG | Rotation: | R | Insulation: | F | Eff. Date: | 01-15-2010 |
| Leads: | 9#14 | Literature: | | Elec. Diagram: | | Replaced By: | |

Nameplate NP1256L

| | | | | | | | |
|--------------|--------------|----------------|------|-----|---|-------|---|
| CAT.NO. | CM2333T | | | | | | |
| SPEC. | 07H204X739H1 | | | | | | |
| HP | 15 | | | | | | |
| VOLTS | 208-230/460 | | | | | | |
| AMP | 40-37/18.5 | | | | | | |
| RPM | 1760 | | | | | | |
| FRAME | 254TC | HZ | 60 | PH | 3 | | |
| SER.F. | 1.15 | CODE | J | DES | A | CLASS | F |
| NEMA-NOM-EFF | 91 | PF | 83 | | | | |
| RATING | 40C AMB-CONT | | | | | | |
| CC | 010A | USABLE AT 208V | | | | | |
| DE | 6309 | ODE | 6307 | | | | |
| ENCL | TEFC | SN | | | | | |
| | | | | | | | |

| Parts List | | |
|----------------|--|----------|
| Part Number | Description | Quantity |
| SA135298 | SA 07H204X739H1 | 1.000 EA |
| RA125059 | RA 07H204X739H1 | 1.000 EA |
| 37FN3002B01 | EXFN, PLASTIC, 7.50 OD, 1.155 ID | 1.000 EA |
| S/P101-000-000 | EPACT PROCEDURES-FS PLANT-POLYREX EM, NO | 1.000 EA |
| HW3201A01 | 1/2-13 EYEBOLT | 1.000 EA |
| 09CB3002SP | CB W/1.38 LEAD HOLE FOR 37, 39, 307 & 30 | 1.000 EA |
| 09GS1000SP | GASKET-CONDUIT BOX, 1/16 THICK LEXIDE | 1.000 EA |
| 51XW2520A12 | .25-20 X .75, TAPTITE II, HEX WSHR SLTD | 2.000 EA |
| WD1000B17 | KPA-8C BURNDY TERMINAL | 1.000 EA |
| 51XW1032A06 | 10-32 X .38, TAPTITE II, HEX WSHR SLTD S | 1.000 EA |
| 37EP1101A03 | FR/PU ENDPLATE, MACH | 1.000 EA |
| HW4500A01 | 1641B(ALEMITE)400 UNIV, GREASE FITT | 1.000 EA |
| HW5100A08 | W3118-035 WVY WSHR (WB) | 1.000 EA |
| 07EP1306A01 | ENDPLATE, MACH | 1.000 EA |
| HW4500A01 | 1641B(ALEMITE)400 UNIV, GREASE FITT | 1.000 EA |
| 10XN2520A36 | 1/4-20X 2 1/4 HEX HD X | 4.000 EA |
| HW1001A25 | LOCKWASHER 1/4, ZINC PLT .493 OD, .255 I | 4.000 EA |
| XY3118A12 | 5/16-18 HEX NUT DIRECTIONAL SERRATION | 4.000 EA |
| 51XB1214A20 | 12-14X1.25 HXWSSLD SERTYB | 1.000 EA |
| 07FH4007SP | IEC FH W/GRSR, NOTCH @ 6:00 & 3 FAN CVR | 1.000 EA |
| 51XW1032A06 | 10-32 X .38, TAPTITE II, HEX WSHR SLTD S | 3.000 EA |
| 09CB3501SP | CONDUIT BOX LID FOR 09CB3001 & 09CB3002 | 1.000 EA |
| 09GS1013SP | 09 GS FOR 09CB3501 LID - LEXIDE | 1.000 EA |
| 51XW2520A12 | .25-20 X .75, TAPTITE II, HEX WSHR SLTD | 2.000 EA |

| Parts List (continued) | | |
|------------------------|---|----------|
| Part Number | Description | Quantity |
| HW2501G25 | KEY, 3/8 SQ X 2.875 | 1.000 EA |
| HA7000A03 | KEY RETAINER RING 1.62 & 1.88 DIA. SH | 1.000 EA |
| LB1115 | LABEL,LIFTING DEVICE | 1.000 EA |
| 85XU0407S04 | 4X1/4 U DRIVE PIN STAINLESS | 2.000 EA |
| MJ1000A75 | GREASE, POLYREX EM EXXON | 0.050 LB |
| HA3104A18 | THRUBOLT- 5/16-18 X14.000 | 4.000 EA |
| MG1000G27 | PAINT- S9282E CHARCOAL GREY | 0.036 GA |
| LB1125C04 | STD-E (STOCK CTN LABEL STD-E WITH FLAG) | 1.000 EA |
| LC0005E01 | CONN.DIA./WARNING LABEL (LC0005/LB1119) | 1.000 EA |
| NP1256L | ALUM, UL CSA CC, W/O THERMAL, LASER | 1.000 EA |
| 07PA1011 | PKG GRP, 07 CAST IRON PK1181 | 1.000 EA |
| 10XL3807A32 | 3/8 X 2" LAG SCREW TDR #49106 | 2.000 EA |

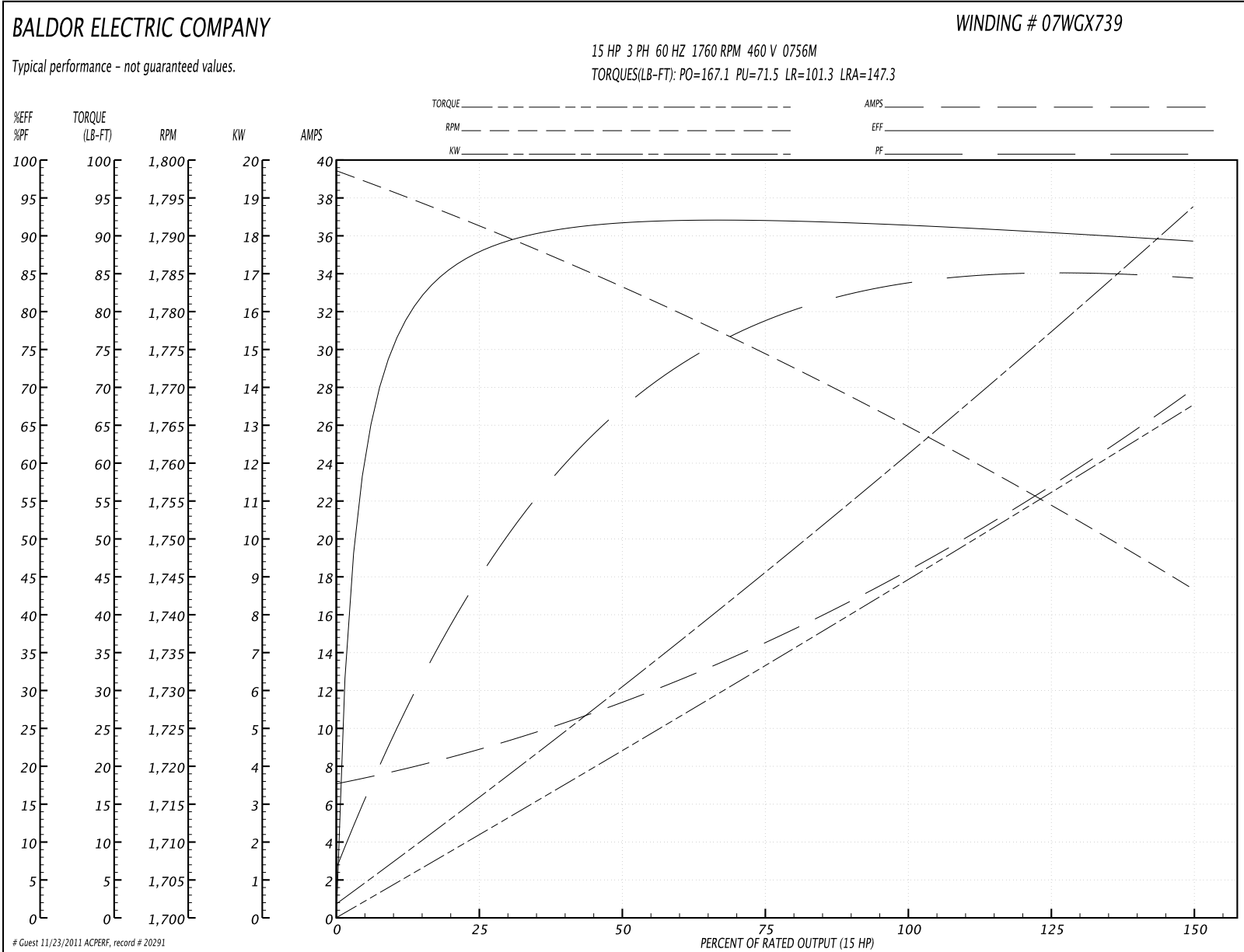
Performance Data at 460V, 60Hz, 15.0HP (Typical performance - Not guaranteed values)
General Characteristics

| | | | |
|---------------------------------|---------------------------------|-----------------------------|-------------|
| Full Load Torque: | 44.6 LB-FT | Start Configuration: | DOL |
| No-Load Current: | 7.39 Amps | Break-Down Torque: | 167.1 LB-FT |
| Line-line Res. @ 25°C.: | 0.618 Ohms A Ph / 0.0 Ohms B Ph | Pull-Up Torque: | 71.5 LB-FT |
| Temp. Rise @ Rated Load: | 65 C | Locked-Rotor Torque: | 101.3 LB-FT |
| Temp. Rise @ S.F. Load: | 83 C | Starting Current: | 147.3 Amps |

Load Characteristics

| % of Rated Load | 25 | 50 | 75 | 100 | 125 | 150 | S.F. |
|------------------------|-----------|-----------|-----------|------------|------------|------------|-------------|
| Power Factor: | 47.0 | 68.0 | 78.0 | 83.0 | 84.0 | 85.0 | 84.0 |
| Efficiency: | 87.6 | 91.6 | 92.1 | 91.6 | 90.6 | 89.3 | 91.0 |
| Speed: | 1791.0 | 1783.0 | 1775.0 | 1765.0 | 1755.0 | 1743.0 | 1759.0 |
| Line Amperes: | 8.47 | 11.1 | 14.5 | 18.6 | 22.9 | 27.7 | 21.2 |

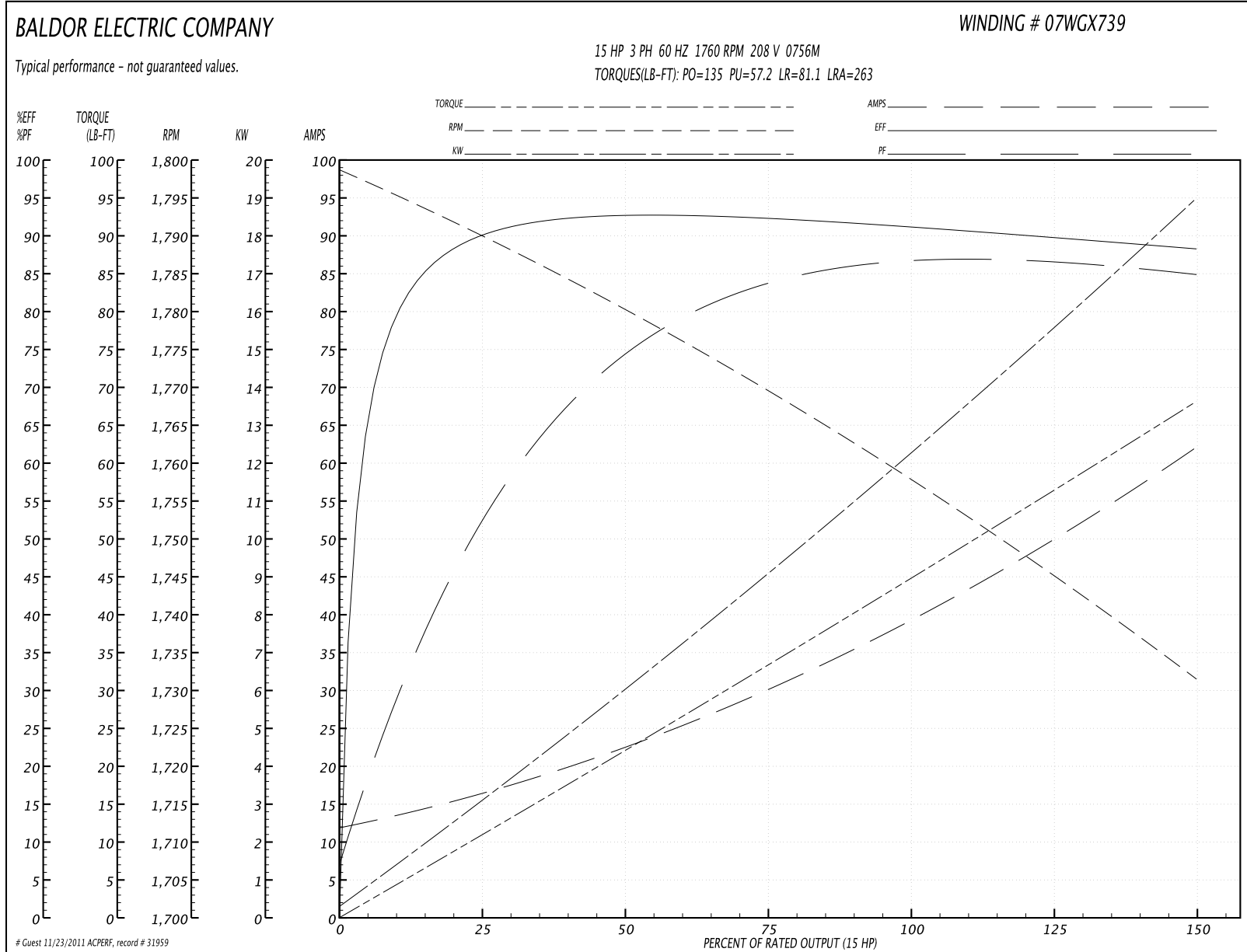
Performance Graph at 460V, 60Hz, 15.0HP Typical performance - Not guaranteed values

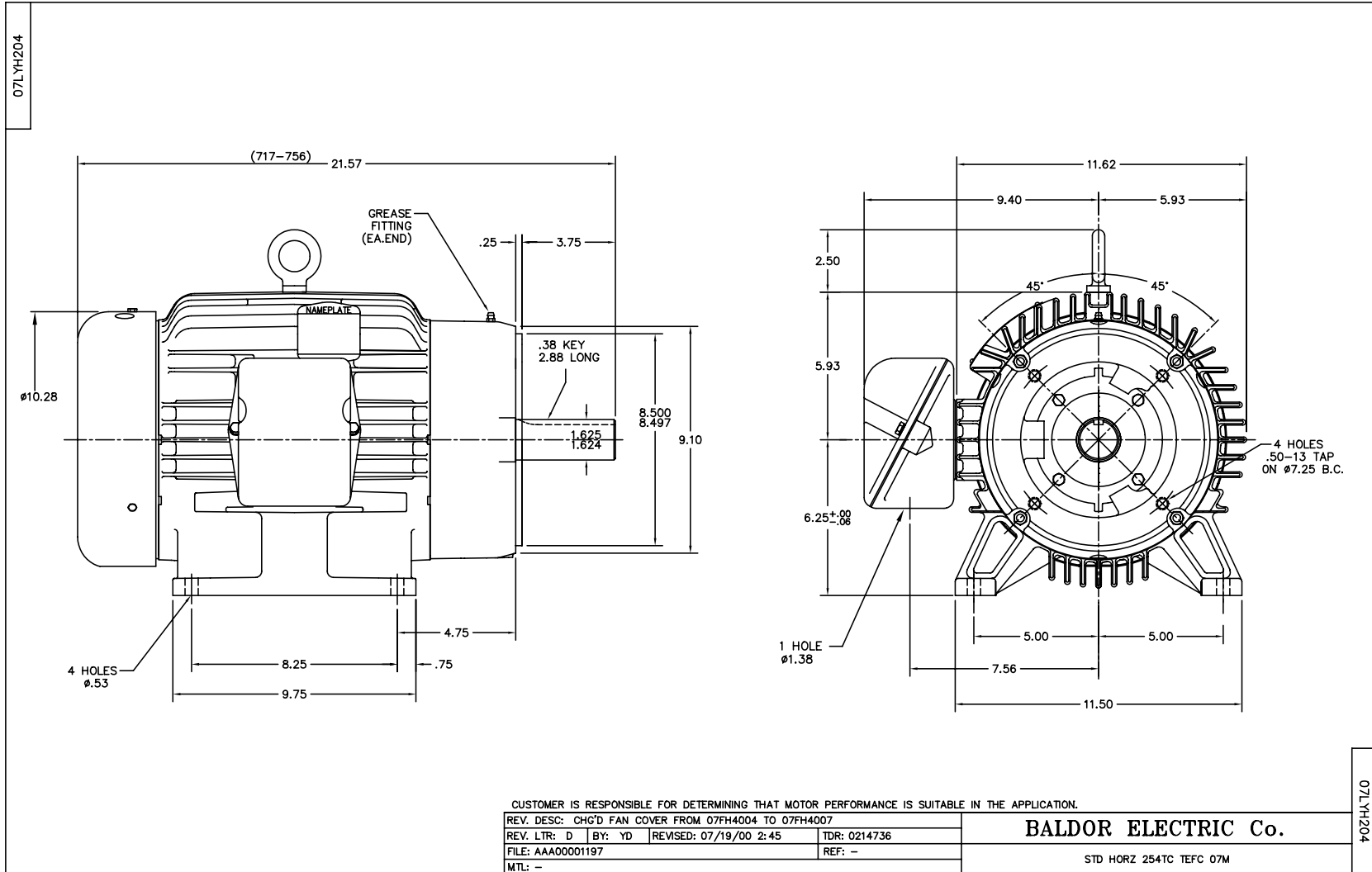


Performance Data at 208V, 60Hz, 15.0HP (Typical performance - Not guaranteed values)

| General Characteristics | | | | | | | |
|--------------------------|---------------------------------|--------|--------|----------------------|-------------|--------|--------|
| Full Load Torque: | 44.7 LB-FT | | | Start Configuration: | DOL | | |
| No-Load Current: | 12.6 Amps | | | Break-Down Torque: | 135.0 LB-FT | | |
| Line-line Res. @ 25°C.: | 0.162 Ohms A Ph / 0.0 Ohms B Ph | | | Pull-Up Torque: | 57.2 LB-FT | | |
| Temp. Rise @ Rated Load: | 67 C | | | Locked-Rotor Torque: | 81.1 LB-FT | | |
| Temp. Rise @ S.F. Load: | 83 C | | | Starting Current: | 263.0 Amps | | |
| Load Characteristics | | | | | | | |
| % of Rated Load | 25 | 50 | 75 | 100 | 125 | 150 | S.F. |
| Power Factor: | 55.0 | 76.0 | 83.0 | 85.0 | 86.0 | 86.0 | 86.0 |
| Efficiency: | 89.2 | 92.4 | 92.4 | 91.2 | 90.0 | 88.1 | 90.5 |
| Speed: | 1790.0 | 1780.0 | 1770.0 | 1758.0 | 1746.0 | 1731.0 | 1751.0 |
| Line Amperes: | 15.4 | 21.9 | 30.1 | 39.8 | 50.1 | 61.7 | 46.0 |

Performance Graph at 208V, 60Hz, 15.0HP Typical performance - Not guaranteed values





CD0005



LOW VOLTAGE
(2Y)



LINE

HIGH VOLTAGE
(1Y)



LINE

NOTES:

1. INTERCHANGE ANY TWO LINE LEADS TO REVERSE ROTATION.
2. OPTIONAL THERMOSTATS ARE PROVIDED WHEN SPECIFIED.
3. ACTUAL NUMBER OF INTERNAL PARALLEL CIRCUITS MAY BE A MULTIPLE OF THOSE SHOWN ABOVE.
4. LEAD COLORS ARE OPTIONAL. LEADS MUST ALWAYS BE NUMBERED AS SHOWN.

| | | | |
|---|---------|-------------------------|--------------|
| REV. DESC: REVISE TO SHOW OPTIONAL COLORS | | | |
| REV. LTR: E | BY: JLP | REVISED: 01/19/99 10:15 | TDR: 0171435 |
| 90000 | | FILE: AAA00005140 | MDL: - |
| | | MTL: - | |

BALDOR ELECTRIC Co.

3PH, DV, 9 LEADS

CD0005