

BALDOR® • RELIANCE

Product Information Packet

ELECTRIC MOTOR WHOLESAL.COM

CWDM3555

2HP,3450RPM,3PH,60HZ,56HCY,3432M,TEFC,F1

| Part Detail | | | | | | | |
|-------------|-------|-------------|-------|----------------|----------|---------------|------------|
| Revision: | G | Status: | PRD/A | Change #: | | Proprietary: | No |
| Type: | AC | Prod. Type: | 3432M | Elec. Spec: | 34WGY918 | CD Diagram: | |
| Enclosure: | TEFC | Mfg Plant: | | Mech. Spec: | 34K942 | Layout: | |
| Frame: | 56HCY | Mounting: | F1 | Poles: | 02 | Created Date: | 10-02-2007 |
| Base: | RG | Rotation: | R | Insulation: | F | Eff. Date: | 12-19-2011 |
| Leads: | 9#18 | Literature: | | Elec. Diagram: | | Replaced By: | |

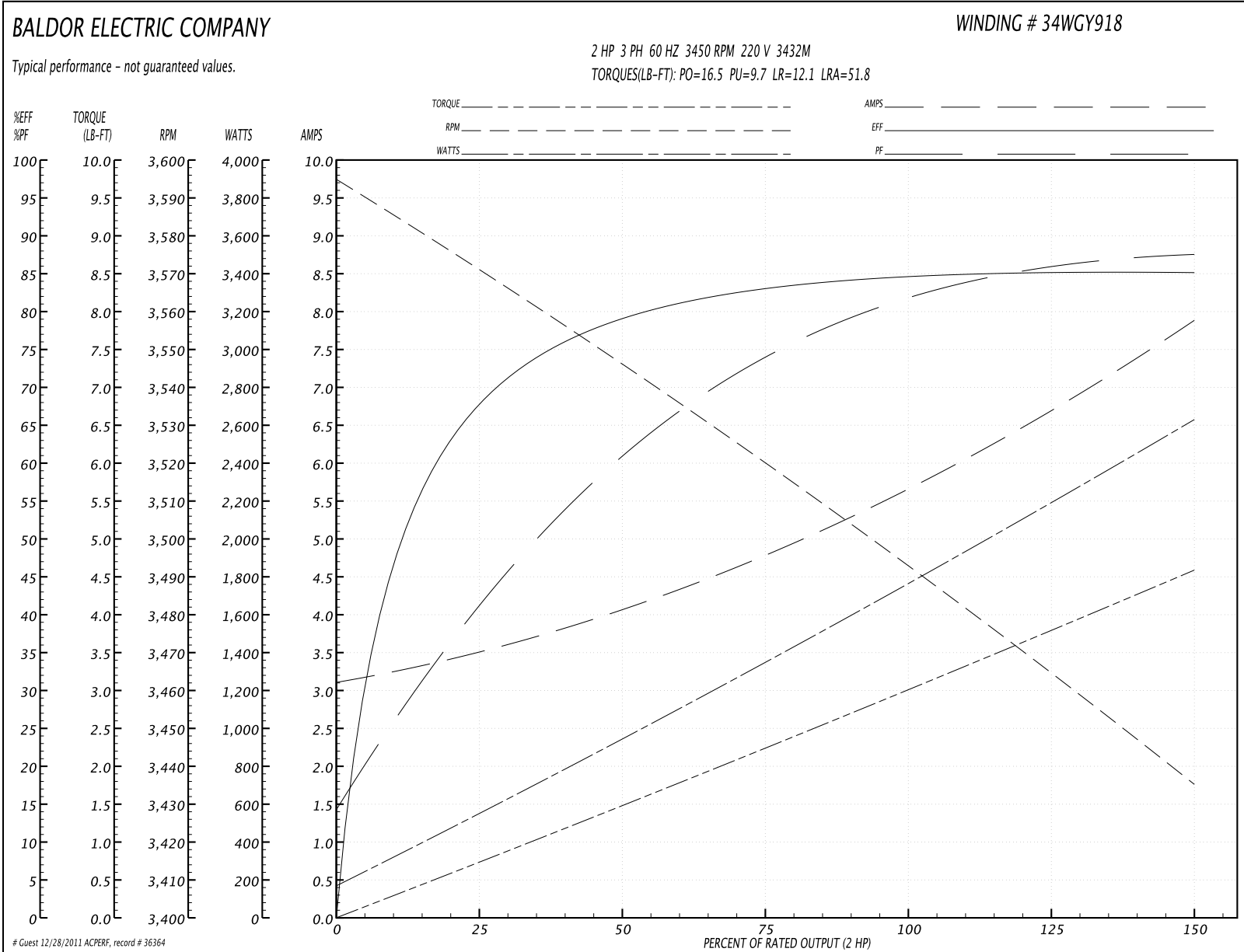
| Nameplate NP1496L | | | | | | | | | |
|-------------------|--------------|------|----------------|-----|---|-------|---|--|--|
| CAT.NO. | CWDM3555 | | | | | | | | |
| SPEC. | 34K942Y918G1 | | | | | | | | |
| HP | 2 | | | | | | | | |
| VOLTS | 208-230/460 | | | | | | | | |
| AMP | 5.7-5.6/2.8 | | | | | | | | |
| RPM | 3450 | | | | | | | | |
| FRAME | 56HCY | HZ | 60 | PH | 3 | | | | |
| SER.F. | 1.15 | CODE | N | DES | B | CLASS | F | | |
| NEMA-NOM-EFF | 80 | PF | 78 | | | | | | |
| RATING | 40C AMB-CONT | | | | | | | | |
| CC | | | USABLE AT 208V | | | | | | |
| DE | 6203 | ODE | 6203 | | | | | | |
| ENCL | TEFC | SN | | | | | | | |
| | | | | | | | | | |

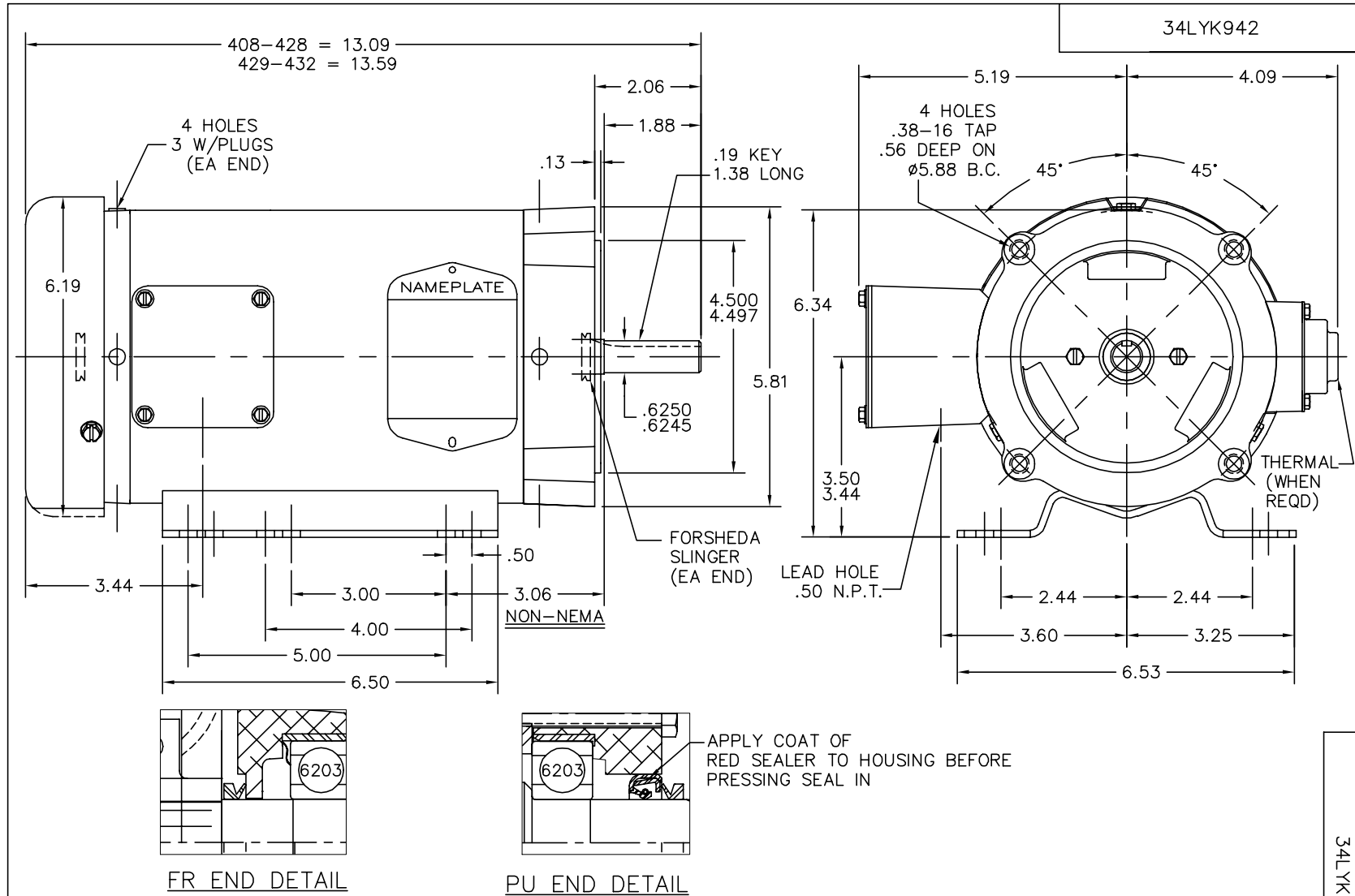
| Parts List | | |
|---------------|--|----------|
| Part Number | Description | Quantity |
| SA163737 | SA 34K942Y918G1 | 1.000 EA |
| RA152201 | RA 34K942Y918G1 | 1.000 EA |
| NS2512A01 | INSULATOR, CONDUIT BOX X | 1.000 EA |
| 34CB3002A16WP | CB W/.50 N.P.T. @ 6, WHITE PRIMER P | 1.000 EA |
| 34GS1029A03 | GASKET, CONDUIT BOX MODEL 34 (WHITE NEOP | 1.000 EA |
| 51XB1016A07 | 10-16 X 7/16 HXWSSLD SERTYB | 2.000 EA |
| 11XW1032G06 | 10-32 X .38, TAPTITE II, HEX WSHR SLTD U | 1.000 EA |
| 34EP3102A35W | SPL FR EP 34L TEFC (HOSE DOWN) MACH W/WH | 1.000 EA |
| HW4032A01 | BLUE DRAIN PLUG FOR WASH DOWN MOTORS | 3.000 EA |
| HW5100A03SP | WAVY WASHER (W1543-017) | 1.000 EA |
| 12XN1032S20 | 10-32 X 1-1/4 HEX M.S. , STAINLESS STEEL | 2.000 EA |
| 34EP3300A48W | PU ENDPLATE 56C 34-ENCL 203 BRG W/WHITE | 1.000 EA |
| HW4032A01 | BLUE DRAIN PLUG FOR WASH DOWN MOTORS | 3.000 EA |
| 34FN3002A01SP | EXTERNAL FAN, PLASTIC, .637/.639 HUB W/ | 1.000 EA |
| 34FH4002A01SP | IEC FH NO GREASER | 1.000 EA |
| 11XW1032S06 | 10-32 X .38, TAPTITE II, HEX WSHR SLTD U | 3.000 EA |
| HW4600A54 | SEAL 0.668 X 1.064 X 0.250 DOUBLE SHIELD | 1.000 EA |
| HW4600B39SP | SEAL 0.550 X .790 X .180 FACE SEALING | 1.000 EA |
| HW4600B39SP | SEAL 0.550 X .790 X .180 FACE SEALING | 1.000 EA |
| 34CB4517WP | CB LID WHITE PRIMER POWDER COAT,4 MTG HO | 1.000 EA |
| 34GS1031A03 | GASKET, FLAT CONDUIT BOX LID (WHITE NEOP | 1.000 EA |
| 11XT0832S07 | 08-32 X 7/16 HX SL WS HD, 304 STAINLESS | 4.000 EA |
| HW2502D13 | SS KEY, 3/16 SQ X 1.375 | 1.000 EA |
| HA7000A04 | KEY RETAINER 0.625 DIA SHAFTS | 1.000 EA |

| Parts List (continued) | | |
|------------------------|--|----------|
| Part Number | Description | Quantity |
| MJ5001A01 | 46-665 RED SEALER | 0.001 QT |
| 10XF0440S02 | 04-40 X 1/8 TYPE F HEX HD STAINLESS STIC | 2.000 EA |
| LB1164 | LABEL,WARNING AND DRAIN | 1.000 EA |
| MG1025W01 | PAINT- 781-01 WILKOFASST WHITE EPOXY | 0.014 GA |
| HA3100S27 | THRUBOLT 10-32 X 9.625 SS TDR #23687 | 4.000 EA |
| LB5040 | INSTRUCTION TAG, AC & DC | 1.000 EA |
| LC0005 | CONN.DIA.,TY M,9-LD,DUAL VOLT,REVERSING | 1.000 EA |
| LB1172A01 | CUSTOM MTR CARTON LABEL LASER PRINTER | 1.000 EA |
| NP1496L | WD, SS, UL CSA CC, W/O THERMAL, LASER | 1.000 EA |
| 34PA1005 | PACKING GROUP, BALDOR | 1.000 EA |

| Performance Data at 220V, 60Hz, 2.0HP (Typical performance - Not guaranteed values) | | | | | | | |
|---|--------------------------------|--------|--------|----------------------|------------|--------|--------|
| General Characteristics | | | | | | | |
| Full Load Torque: | 3.01 LB-FT | | | Start Configuration: | DOL | | |
| No-Load Current: | 3.16 Amps | | | Break-Down Torque: | 16.5 LB-FT | | |
| Line-line Res. @ 25°C.: | 1.15 Ohms A Ph / 0.0 Ohms B Ph | | | Pull-Up Torque: | 9.7 LB-FT | | |
| Temp. Rise @ Rated Load: | | | | Locked-Rotor Torque: | 12.1 LB-FT | | |
| Temp. Rise @ S.F. Load: | | | | Starting Current: | 51.8 Amps | | |
| Load Characteristics | | | | | | | |
| % of Rated Load | 25 | 50 | 75 | 100 | 125 | 150 | S.F. |
| Power Factor: | 42.0 | 62.0 | 74.0 | 81.0 | 85.0 | 88.0 | 83.0 |
| Efficiency: | 67.8 | 79.1 | 83.1 | 84.7 | 85.2 | 85.1 | 85.0 |
| Speed: | 3571.0 | 3546.0 | 3520.0 | 3493.0 | 3465.0 | 3435.0 | 3476.0 |
| Line Amperes: | 3.45 | 4.02 | 4.79 | 5.71 | 6.73 | 7.84 | 6.32 |

Performance Graph at 220V, 60Hz, 2.0HP Typical performance - Not guaranteed values





CUSTOMER IS RESPONSIBLE FOR DETERMINING THAT BALDOR'S PRODUCT WILL PERFORM SUITABLY IN THE INTENDED APPLICATION.

REV. DESC: UPDATE TITLE BLOCK

REV. LTR: A

VERSION: 01

TDR: 000000725139

FILE: \AAA\00151\319

REVISED: 11:02:09 12/15/2011

MTL: -

BY: ENVINWO

BALDOR

HORZ 34M 56HCY TEFC, WD STD & LOW RES ER

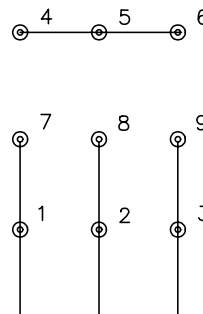
SH 1 of 1

34LYK942

CD0005

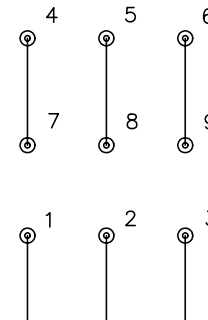


LOW VOLTAGE
(2Y)



LINE

HIGH VOLTAGE
(1Y)



LINE

NOTES:

1. INTERCHANGE ANY TWO LINE LEADS TO REVERSE ROTATION.
2. OPTIONAL THERMOSTATS ARE PROVIDED WHEN SPECIFIED.
3. ACTUAL NUMBER OF INTERNAL PARALLEL CIRCUITS MAY BE A MULTIPLE OF THOSE SHOWN ABOVE.
4. LEAD COLORS ARE OPTIONAL. LEADS MUST ALWAYS BE NUMBERED AS SHOWN.

| | | | |
|---|---------|-------------------------|--------------|
| REV. DESC: REVISE TO SHOW OPTIONAL COLORS | | | |
| REV. LTR: E | BY: JLP | REVISED: 01/19/99 10:15 | TDR: 0171435 |
| 900000 | | FILE: AAA00005140 | MDL: - |
| | | MTL: - | |

BALDOR ELECTRIC Co.

3PH, DV, 9 LEADS

CD0005