

BALDOR® • RELIANCE

Product Information Packet

ELECTRIC MOTOR WHOLESAL.COM

D50200P-BV

200HP, 1750/1900RPM, DC, 409AT, DPBV, F1, N

Part Detail			
Type:	DC	Prod. Type:	T
Power Code:	C	Weight:	1830
Frame Group:	0409AT	Mounting Pos.:	F1
HP:	200	Enclosure:	DPBV
RPM:	1750/1900	Wound:	STR. SHUNT
Service Factor:	1.0	Arm V:	500
Arm A:	311.00	Field V:	150/ 300
Field A:	11.14/5.57	Field A Hot:	7.50-6.20/3.75-
Insulation Class:	F	Ambient:	40
Duty:	CONT	DE Bearing:	6214
ODE Bearing:	6213	Brushes:	40019-3
Brush Qty.:			

1336-5

1/2-13UNC-2B THD X 1.00 DEEP, 4 HOLES EQUALLY SPACED ON A 7.250 DIA. B.C.
 1/2-13 UNC-2B THD'S 1.00 DEEP IN SHAFT END
 8.498 DIA. 8.500 DIA.
 .40 .19
 .40 .19 ACCESSORY 'C' FACE
 1.1245 DIA. 1.1250 DIA.
 (4)H HOLE DIA. .25
 2F B BS AIR OUT N-W N N-W
 XR FN BS BA
 XH DIA. .75 .40 .19
 XD XS XN
 XL AB AC
 AF J E
 G N-W
 HOLE FOR 'AA' CONDUIT
 2E A

STANDARD COMM END FOR SINGLE SHAFT EXTENSION

TACHOMETER					STANDARD TACHOMETER MOUNTINGS				
TACH	XR	LBS	FIG #		XPY TACHOMETER	DPY TACHOMETER	NCS & AC TACHOMETER	XC 42 & 46 TACHOMETER	XPY II
XPY	9.00	6.00	1						
DPY	6.91	3.00	2		FIG. 1	FIG. 2	FIG. 3	FIG. 4	FIG. 5
NCS	3.25	7.00	3						
AC	2.77	7.00	3						
XC42	12.49	25.00	4						
XC46	14.50	35.00	4						
XPYII	6.89	15.00	5						

XC TACH MOUNTING KIT

3/16 X 3/32 KEYWAY (REF.)

.406 DIA. THRU 4-HOLES EQ. SPACED @ 90° ON 5.875 DIA. B.C. (REF.)

4.502 4.501

.827/.828 DIA. (REF.)

3.68

4.25

XPY TACH MOUNTING KIT

COUPLING FOR .313 DIA. SHAFT

2.21

2.502 2.501

1/4-20 UNC-2B THDS, 4-HOLES EQ. SPACED @ 90° ON A 3.978 DIA. B.C. (REF.)

2.44

FRAME	FOOT MOUNTING					D.E. SHAFT EXTENSION					DRIVE KEY		ACC SHAFT EXTENSION			ACC KEY		FRAME						
	BA	E	2F	G	H	J	N	N-W	U	V	W	KEY-SQ.	KEY-LONG	FN	FU	FV	KEY-SQ.	KEY-LONG	A	B	C	D	O	P
407AT	6.63	8.00	18.00	.81	.938	4.00	5.44	5.25	2.625	5.00 ³	.19	.625	4.00	4.95	2.375	4.70	.625	3.50	20.00	20.00	39.38	10.00 ²	20.19	20.38
L407AT	6.63	8.00	18.00	.81	.938	4.00	5.44	5.25	2.625	5.00 ³	.19	.625	4.00	4.95	2.375	4.70	.625	3.50	20.00	20.00	40.50	10.00 ²	20.19	20.38
409AT	6.63	8.00	22.00	.81	.938	4.00	5.44	5.25	2.625	5.00 ³	.19	.625	4.00	4.95	2.375	4.70	.625	3.50	20.00	24.00	43.88	10.00 ²	20.19	20.38
L409AT	6.63	8.00	22.00	.81	.938	4.00	5.44	5.25	2.625	5.00 ³	.19	.625	4.00	4.95	2.375	4.70	.625	3.50	20.00	24.00	45.00	10.00 ²	20.19	20.38
L4011AT	6.63	8.00	28.00	.81	.938	4.00	5.44	5.25	2.625	5.00 ³	.19	.625	4.00	4.95	2.375	4.70	.625	3.50	20.00	30.00	52.75	10.00 ²	20.19	20.38

FRAME	CONDUIT BOX					BLOWER										ARM APPROX. WK ² LBS.FT. ²	APPROXIMATE WEIGHT	
	AA	AB	AC	AF	BS	XL	XN	SIZE	XB	XD	XE	XH	XM	XJ	XK			XS
407AT	3	18.28	14.45	3.34	14.50	11.63	7.76	LM6	19.63	26.38	19.05	10.25	5.69	10.95	11.50	3.75	35.47	1355 ⁵
L407AT	3	18.28	14.45	3.34	15.62	11.63	7.76	LM6	19.63	26.38	19.05	10.25	5.69	10.95	11.50	3.75	35.47	1405 ⁵
409AT	3	18.28	14.45	3.34	19.00	11.63	7.76	LM6	19.63	26.38	19.05	10.25	5.69	10.95	11.50	3.75	43.81	1651 ⁵
L409AT	3	18.28	14.45	3.34	20.12	11.63	7.76	LM6	19.63	26.38	19.05	10.25	5.69	10.95	11.50	3.75	43.81	1701 ⁵
L4011AT	4	19.28	14.63	3.50	27.70	13.40	13.50	LM9	26.02	28.31	21.20	10.75	12.49	20.93	15.25	3.75	55.64	2483 ⁵

1) SHAFT DIAMETERS TO 1.500 TOLERANCE +.0000 - .0005
 SHAFT DIAMETERS ABOVE 1.500 TOLERANCE +.0000 - .0010
 SHAFT DIAMETERS ABOVE 1.625 RUNOUT .002 T.I.R. MAX.
 SHAFT DIAMETERS ABOVE 1.625 RUNOUT .003 T.I.R. MAX.
 2) 'D' DIMENSION TOLERANCE +.000 - .060
 3) 'V' DIMENSION IS MAX. HUB LENGTH ON SHAFT
 4) CONDUIT BOX CAN BE ROTATED IN 90° STEPS ON ITS OWN AXIS.
 5) TOTAL WEIGHT OF MOTOR AND BLOWER LESS TACH WEIGHT.
 6) ALL DIMENSIONS NOT NOTED ARE NOMINAL DIMENSIONS CONSULT FACTORY FOR TOLERANCES.

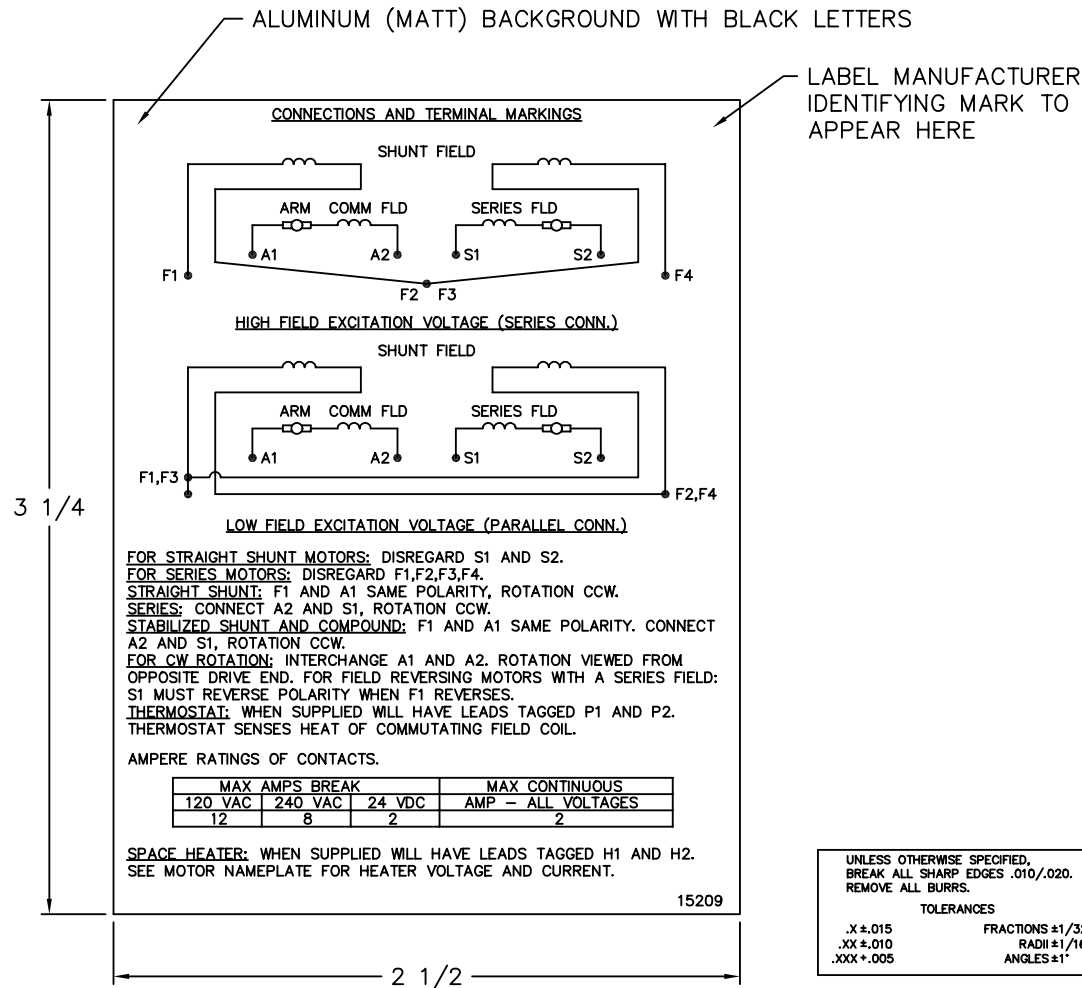
FOR F1 OR F2 CONDUIT BOX LOCATION SEE SALES ORDER

1336-5

CUSTOMER IS RESPONSIBLE FOR DETERMINING THAT BALDOR'S PRODUCT WILL PERFORM SUITABLY IN THE INTENDED APPLICATION.

REV. DESC: PROVIDE "D" DIM TOL. TO ONLY THOSE OF DIM. 10.00"	<h1>BALDOR</h1>
REV. LTR: G VERSION: 01 TDR: 000000750921	DIM SHEET: 407-L4011AT,DPBV,W/TACH
FILE: \RGG\00019\442 REVISED: 09:38:49 06/11/2012	SH 1 of 1
MTL: - BY: RGGNAS	

15209



NOTE:
 MATERIAL .005 MINIMUM FULL HARD ALUMINUM DULL FINISH.
 TEMP. RANGE -20°C TO +125°C MAXIMUM.
 FOR INDOOR AND OUTDOOR MOUNTING BACK.
 METAL, PRESSURE SENSITIVE BACK. MUST MEET CSA STANDARD.
 THE CSA IDENTIFYING MARK OF THE LABEL MANUFACTURER MUST APPEAR IN THE UPPER RIGHT HAND CORNER AS INDICATED.

UNLESS OTHERWISE SPECIFIED, BREAK ALL SHARP EDGES .010/.020. REMOVE ALL BURRS.

TOLERANCES

.X ± .015	FRACTIONS ±1/32
.XX ± .010	RADI ±1/16
.XXX ± .005	ANGLES ±1°

MATL: NOTED			
REV:	G	CHANGE ALL "NAMEPLATE" TEXT TO "LABEL"	
60291	SCALE: -	BY: BKW	REVISED: 02/19/97
	FILE: CHB00002485	TDR: 0115147	

BALDOR ELECTRIC Co.

LABEL, CONNECTIONS AND TERMINAL MARKINGS DC

15209