

# **BALDOR® • RELIANCE**

**Product Information Packet**

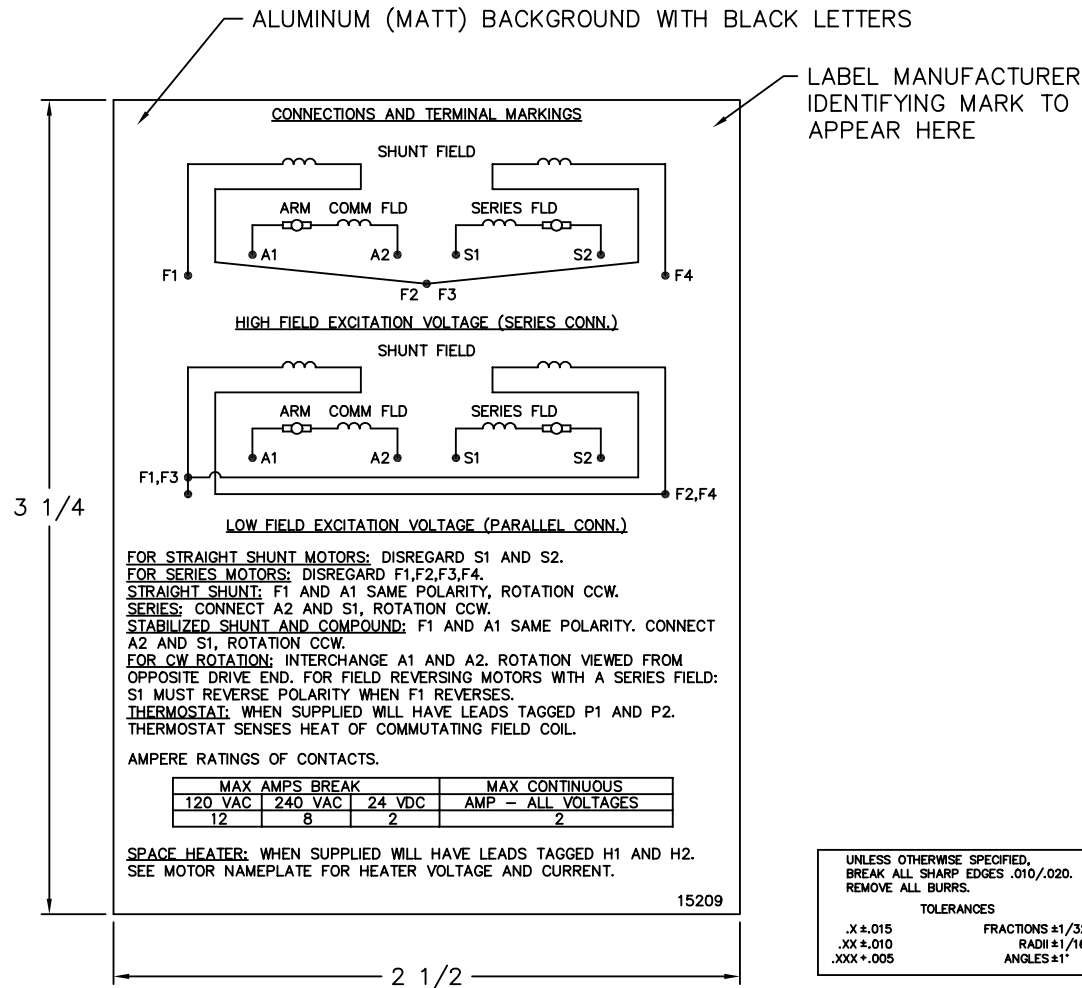
**ELECTRIC MOTOR WHOLESAL.COM**

**D50500P-BV**

**500HP, 1750/1900RPM, DC, 5010AT, DPBV, F1, N**

Part Detail			
Type:	DC	Prod. Type:	TR
Power Code:	C	Weight:	4170
Frame Group:	5010AT	Mounting Pos.:	F1
HP:	500	Enclosure:	DPBV
RPM:	1750/1950	Wound:	STR. SHUNT
Service Factor:	1.0	Arm V:	500
Arm A:	788.00	Field V:	150/ 300
Field A:	17.64/8.82	Field A Hot:	12.06-10.04/6.0
Insulation Class:	F	Ambient:	40
Duty:	CONT	DE Bearing:	6218
ODE Bearing:	6218	Brushes:	50034-2
Brush Qty.:			

15209



**NOTE:**  
 MATERIAL .005 MINIMUM FULL HARD ALUMINUM DULL FINISH.  
 TEMP. RANGE -20°C TO +125°C MAXIMUM.  
 FOR INDOOR AND OUTDOOR MOUNTING BACK.  
 METAL, PRESSURE SENSITIVE BACK. MUST MEET CSA STANDARD.  
 THE CSA IDENTIFYING MARK OF THE LABEL MANUFACTURER MUST APPEAR IN THE UPPER RIGHT HAND CORNER AS INDICATED.

UNLESS OTHERWISE SPECIFIED, BREAK ALL SHARP EDGES .010/.020. REMOVE ALL BURRS.

TOLERANCES

.X ± .015	FRACTIONS ±1/32
.XX ± .010	RADI ±1/16
.XXX ± .005	ANGLES ±1°

MATL: NOTED			
REV:	G	CHANGE ALL "NAMEPLATE" TEXT TO "LABEL"	
60291	SCALE: -	BY: BKW	REVISED: 02/19/97
	FILE: CHB00002485	TDR: 0115147	

**BALDOR ELECTRIC Co.**

LABEL, CONNECTIONS AND TERMINAL MARKINGS DC

15209