

BALDOR® • RELIANCE

Product Information Packet

ELECTRIC MOTOR WHOLESALE.COM

EM7137T-C

2HP,1750RPM,3PH,60HZ,145T,0527M,XPFC,F1

| Part Detail | | | | | | | |
|-------------|------|-------------|-------|----------------|----------|---------------|------------|
| Revision: | A | Status: | PRD/A | Change #: | | Proprietary: | No |
| Type: | AC | Prod. Type: | 0527M | Elec. Spec: | 05WGX095 | CD Diagram: | |
| Enclosure: | XPFC | Mfg Plant: | | Mech. Spec: | 05E347 | Layout: | |
| Frame: | 145T | Mounting: | F1 | Poles: | 04 | Created Date: | 10-20-2010 |
| Base: | RG | Rotation: | R | Insulation: | B | Eff. Date: | 02-24-2011 |
| Leads: | 9#18 | Literature: | | Elec. Diagram: | | Replaced By: | |

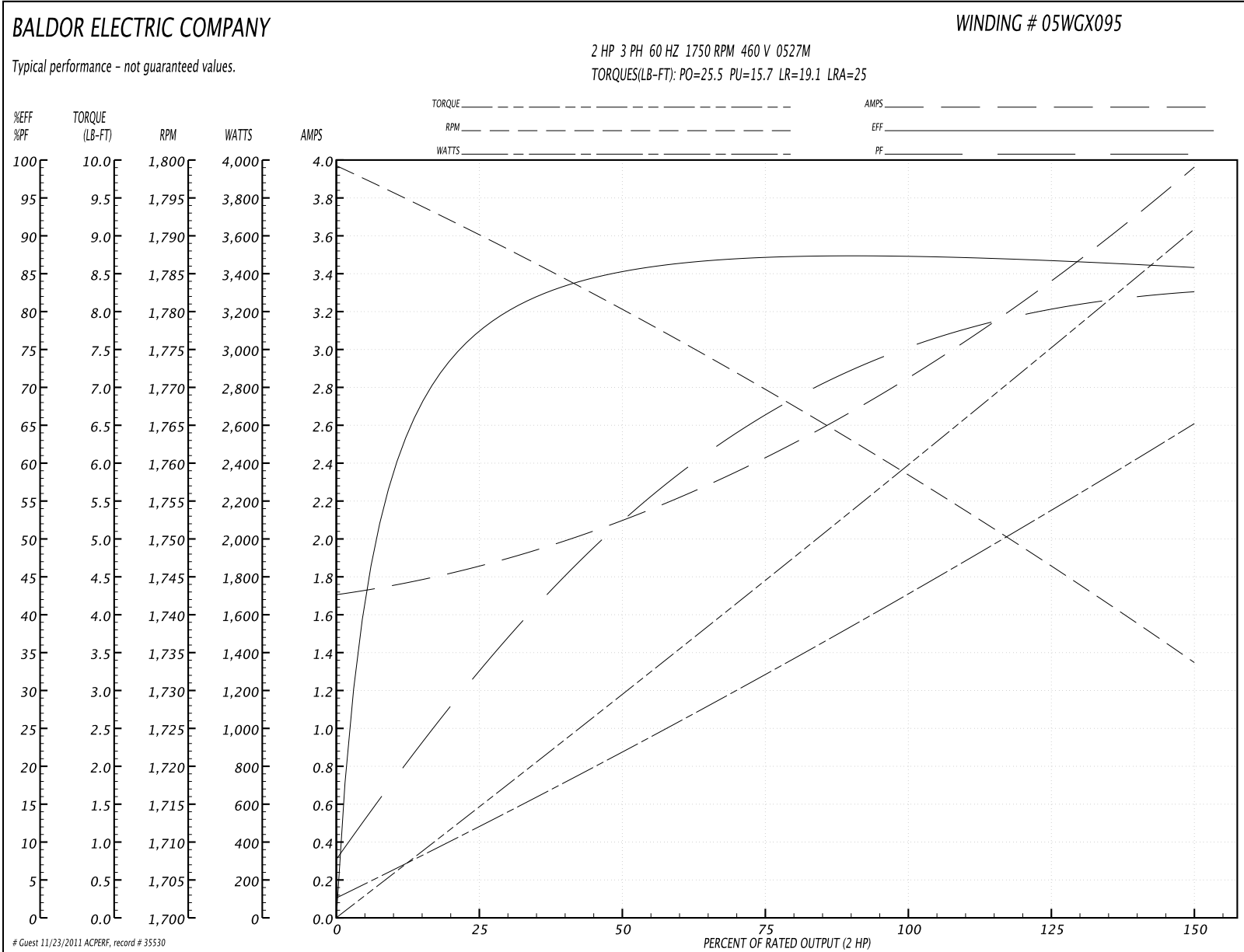
| Nameplate NP0978XP | | | | | | | |
|--------------------|--------------|--------------|------------|------|---|-------|------|
| NO. | | TEMP CODE | T3C | | | | |
| SPEC. | 05E347X095G1 | DE BRG | 6205 | | | | |
| CAT.NO. | EM7137T-C | ODE BRG | 6203 | | | | |
| HP | 2 | GREASE | POLYREX EM | | | | |
| VOLTS | 208-230/460 | MOTOR WEIGHT | 60 LBS | | | | |
| AMPS | 5.8/2.9 | NEMA-NOM-EFF | 86.5 | | | | |
| RPM | 1750 | FL PF | 75 | | | | |
| CYCLE | 60 | PH | 3 | CL | B | FRAME | 145T |
| SER.F. | 1.00 | DES | B | CODE | L | CC | 010A |
| SER. | | BLANK | | | | | |
| RATING | 40C AMB-CONT | | | | | | |
| USABLE AT 208V | | | | | | | |

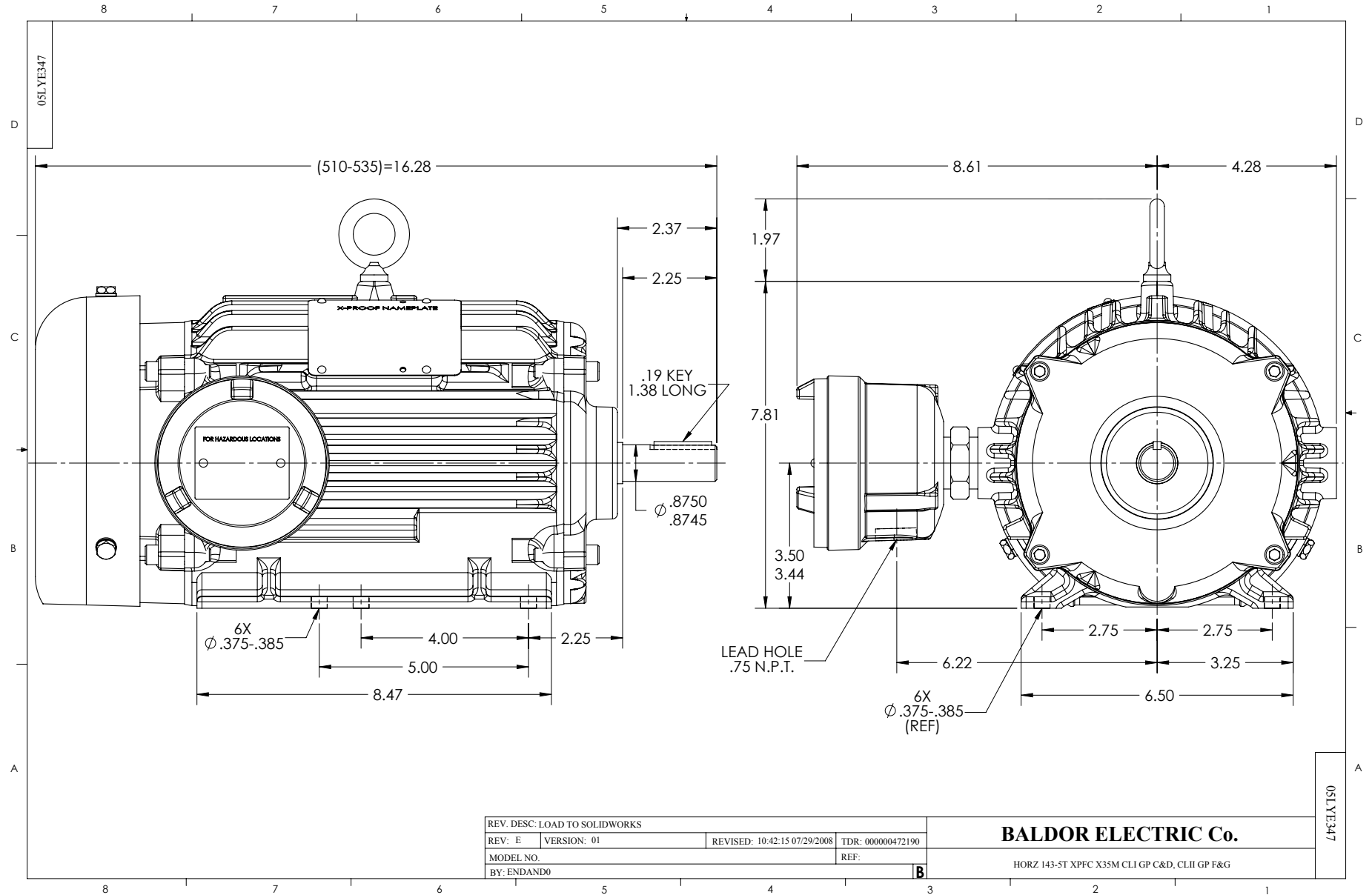
| Parts List | | |
|-------------|--|----------|
| Part Number | Description | Quantity |
| SA204970 | SA 05E347X095G1 | 1.000 EA |
| RA192218 | RA 05E347X095G1 | 1.000 EA |
| 34FN3002B01 | EXTERNAL FAN, PLASTIC, .637/.639 HUB W/ | 1.000 EA |
| HW3201A05 | 3/8-16 EYEBOLT | 1.000 EA |
| HW4002A18 | 1"HEX STEEL PIPE NIPPLE FOR 305XP MTRS | 1.000 EA |
| HW3021F12 | SPRING PIN, .156 X 1.25 | 1.000 EA |
| 11XW1032G06 | 10-32 X .38, TAPTITE II, HEX WSHR SLTD U | 1.000 EA |
| HW3001B01 | 003SS CUP WASHER, FOR #8 SCREW | 1.000 EA |
| 35EP1715A02 | FR ENDPLATE,TEFC,35M,X-PROOF MTR,GROUP"C | 1.000 EA |
| 84XN3118J20 | 5/16-18 X 1 1/4" SOC HD CAP SCREW | 4.000 EA |
| HW5100A03SP | WAVY WASHER (W1543-017) | 1.000 EA |
| 05EP1700A01 | EP PU EXPL PROOF 205 BRG -GROUP C MTRS | 1.000 EA |
| 84XN3118J20 | 5/16-18 X 1 1/4" SOC HD CAP SCREW | 4.000 EA |
| 51XB1214A16 | 12-14X1.00 HXWSSLD SERTYB | 1.000 EA |
| 35FH1000A02 | SPL FAN COVER MODEL 35 | 1.000 EA |
| 10XN2520A18 | 1/4-20 X 1-1/8 HEX CAP SCREW. | 3.000 EA |
| HW1001A25 | LOCKWASHER 1/4, ZINC PLT .493 OD, .255 I | 3.000 EA |
| 35CB1501A01 | CONDUIT BOX LID, MACH. - GROUP "C"MTRS | 1.000 EA |
| LB1359 | LABEL, UL/CSA "XP" | 1.000 EA |
| 85XU0407S04 | 4X1/4 U DRIVE PIN STAINLESS | 2.000 EA |
| RM1020A41 | O-RING, -150 BUNA-N, .103 CS X 2.862 ID | 1.000 EA |
| HW2501D13SP | KEY, 3/16 SQ X 1.375 | 1.000 EA |
| HA7000A01 | KEY RETAINER 7/8" DIA SHAFT | 1.000 EA |
| 85XU0407S04 | 4X1/4 U DRIVE PIN STAINLESS | 4.000 EA |

| Parts List (continued) | | |
|------------------------|--|----------|
| Part Number | Description | Quantity |
| 35CB1005A01 | CONDUIT BOX,MACH - GROUP "C" MTRS | 1.000 EA |
| MJ1000A75 | GREASE, POLYREX EM EXXON | 0.050 LB |
| MG1025Z20 | ACTIVATOR WILKOFAST 060.32 | 0.010 GA |
| MG1025G29 | PAINT 789.205 DARK GRAY METALLIC (USE W/ | 0.017 GA |
| LB1119 | WARNING LABEL | 1.000 EA |
| LB1125C02 | SUPER-E (STOCK CTN LABEL SUPER-E WITH FL | 1.000 EA |
| LB1357 | ENERGY GUIDE LABEL (BOX LABEL) | 1.000 SH |
| LC0145B01 | CONNECTION LABEL | 1.000 EA |
| NP0978XP | UL/CSA, CLI GP-C&D,CLII GP-F&G,CC | 1.000 EA |
| 37PA1052 | PACKAGING GROUP, 150 LB MTR 2 X 4 RUNNER | 1.000 EA |

| Performance Data at 460V, 60Hz, 2.0HP (Typical performance - Not guaranteed values) | | | | | | | |
|---|--------------------------------|--------|--------|----------------------|------------|--------|------|
| General Characteristics | | | | | | | |
| Full Load Torque: | 5.95 LB-FT | | | Start Configuration: | DOL | | |
| No-Load Current: | 1.73 Amps | | | Break-Down Torque: | 25.5 LB-FT | | |
| Line-line Res. @ 25°C.: | 7.65 Ohms A Ph / 0.0 Ohms B Ph | | | Pull-Up Torque: | 15.7 LB-FT | | |
| Temp. Rise @ Rated Load: | 47 C | | | Locked-Rotor Torque: | 19.1 LB-FT | | |
| Temp. Rise @ S.F. Load: | | | | Starting Current: | 25.0 Amps | | |
| Load Characteristics | | | | | | | |
| % of Rated Load | 25 | 50 | 75 | 100 | 125 | 150 | S.F. |
| Power Factor: | 32.0 | 53.0 | 66.0 | 74.0 | 80.0 | 83.0 | 0.0 |
| Efficiency: | 76.6 | 85.2 | 87.1 | 87.4 | 86.9 | 85.8 | 0.0 |
| Speed: | 1791.0 | 1780.0 | 1770.0 | 1759.0 | 1746.0 | 1734.0 | 0.0 |
| Line Amperes: | 1.83 | 2.06 | 2.43 | 2.87 | 3.37 | 3.94 | 0.0 |

Performance Graph at 460V, 60Hz, 2.0HP Typical performance - Not guaranteed values

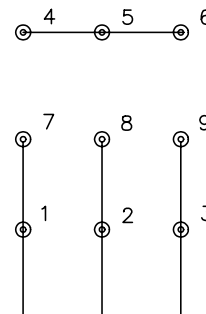




CD0005

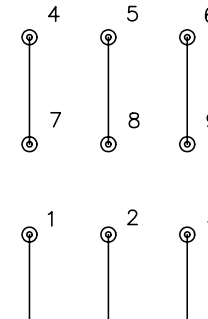


LOW VOLTAGE
(2Y)



LINE

HIGH VOLTAGE
(1Y)



LINE

NOTES:

1. INTERCHANGE ANY TWO LINE LEADS TO REVERSE ROTATION.
2. OPTIONAL THERMOSTATS ARE PROVIDED WHEN SPECIFIED.
3. ACTUAL NUMBER OF INTERNAL PARALLEL CIRCUITS MAY BE A MULTIPLE OF THOSE SHOWN ABOVE.
4. LEAD COLORS ARE OPTIONAL. LEADS MUST ALWAYS BE NUMBERED AS SHOWN.

| | | | |
|---|---------|-------------------------|--------------|
| REV. DESC: REVISE TO SHOW OPTIONAL COLORS | | | |
| REV. LTR: E | BY: JLP | REVISED: 01/19/99 10:15 | TDR: 0171435 |
| 900000 | | FILE: AAA00005140 | MDL: - |
| | | MTL: - | |

BALDOR ELECTRIC Co.

3PH, DV, 9 LEADS

CD0005