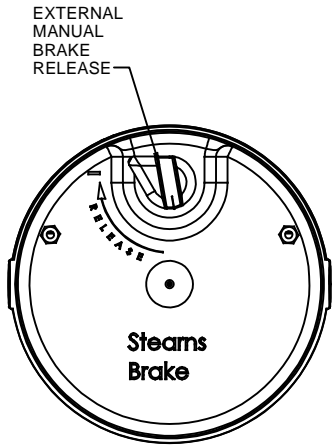
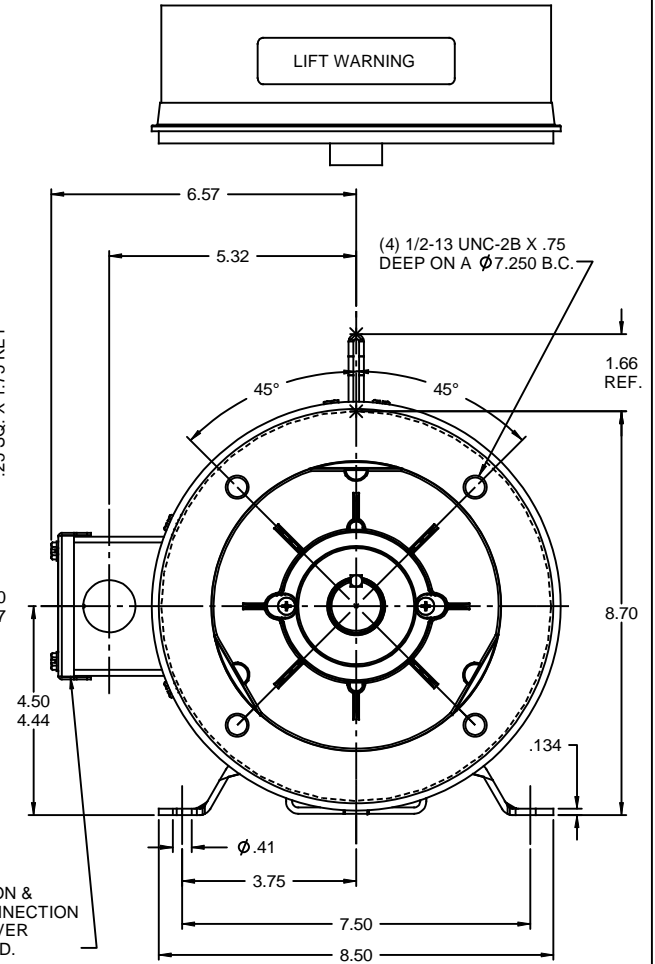
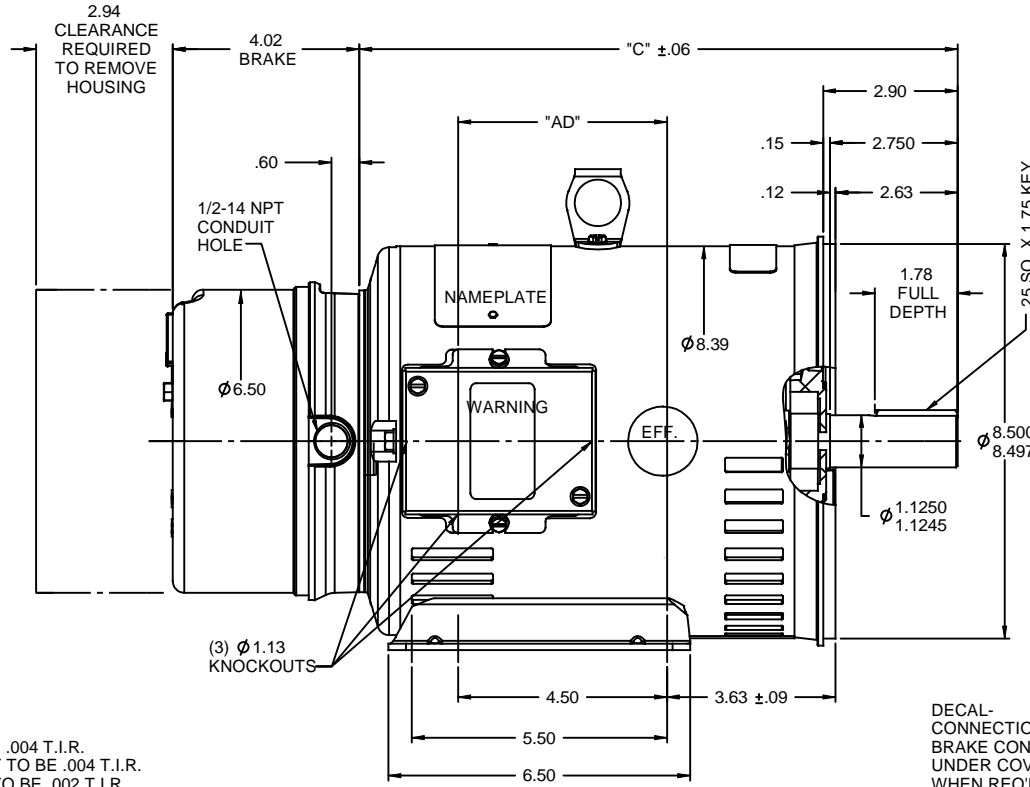


RBC PROPRIETARY AND CONFIDENTIAL INFORMATION
 This document is the property of REGAL BELOIT CORPORATION ("RBC") including its subsidiaries and divisions and contains proprietary information of RBC. This document is loaned on the express condition that neither it nor the information contained therein shall be disclosed to others without the express written consent of RBC, and that the information shall be used by the recipient only as approved expressly by RBC. This document shall be returned to RBC upon its request. This document may be subject to certain restrictions under U.S. export control laws and regulations.



Steam Brake



DECAL-
CONNECTION &
BRAKE CONNECTION
UNDER COVER
WHEN REQ'D.

GASKETS THROUGHOUT
 MAXIMUM FACE RUNOUT TO BE .004 T.I.R.
 MAXIMUM PILOT ECCENTRICITY TO BE .004 T.I.R.
 PERMISSIBLE SHAFT RUNOUT TO BE .002 T.I.R.
 BASE & C-FACE MOUNTING TAPS TO BE SQUARE
 & PARALLEL TO EACH OTHER ± 1/32 MAX.

DASH NO.	"C"	"AD"
800	12.39	4.00
850	12.89	4.50
900	13.39	5.00
950	13.89	5.50
1000	14.39	6.00
1050	14.89	6.50
1100	15.39	7.00
1150	15.89	7.50

REVISION		BY & DATE	CHK	ANG	FINISH	PREV	SIZE	DRAWING NO	REV
- UPDATED & REDRAWN IN SOLIDWORKS		LST 12/3/2009	XX	XXX	±.0005	MATL BRAKE MOTOR			
NO			CHK	ANG	±1/2"	FINISH			
THIRD ANGLE PROJECTION			RFP			PREV	B	035525	-
						NETWORK FILE NAME			



TOLERANCES UNLESS SPECIFIED:
 DEC INCHES
 X ±.1
 .XX ±.03
 .XXX ±.005
 XX .XXX ±.0005
 TITLE OUTLINE - 180TC FRAME
 DRIP PROOF - RIGID "C"
 DRAWN VS 6/07/07
 CHK RDW 6/07/07
 APPR
 SCALE 3:8
 REF OLG131558
 FMF
 PAGE OF