

**BALDOR® • RELIANCE**

**Product Information Packet**

**ELECTRIC MOTOR WHOLESAL.COM**

**GMP3332**

**OUTPUTHP,1725RPM,3PH,60HZ,PSLH,3320M,TEF**

Part Detail							
Revision:	V	Status:	PRD/A	Change #:		Proprietary:	No
Type:	AC	Prod. Type:	3320M	Elec. Spec:	33WG0675	CD Diagram:	
Enclosure:	TEFC	Mfg Plant:		Mech. Spec:		Layout:	
Frame:	PSLH	Mounting:		Poles:	04	Created Date:	02-23-2006
Base:		Rotation:	R	Insulation:	B	Eff. Date:	09-06-2011
Leads:	9#18	Literature:		Elec. Diagram:		Replaced By:	

**Nameplate NP1220A07**

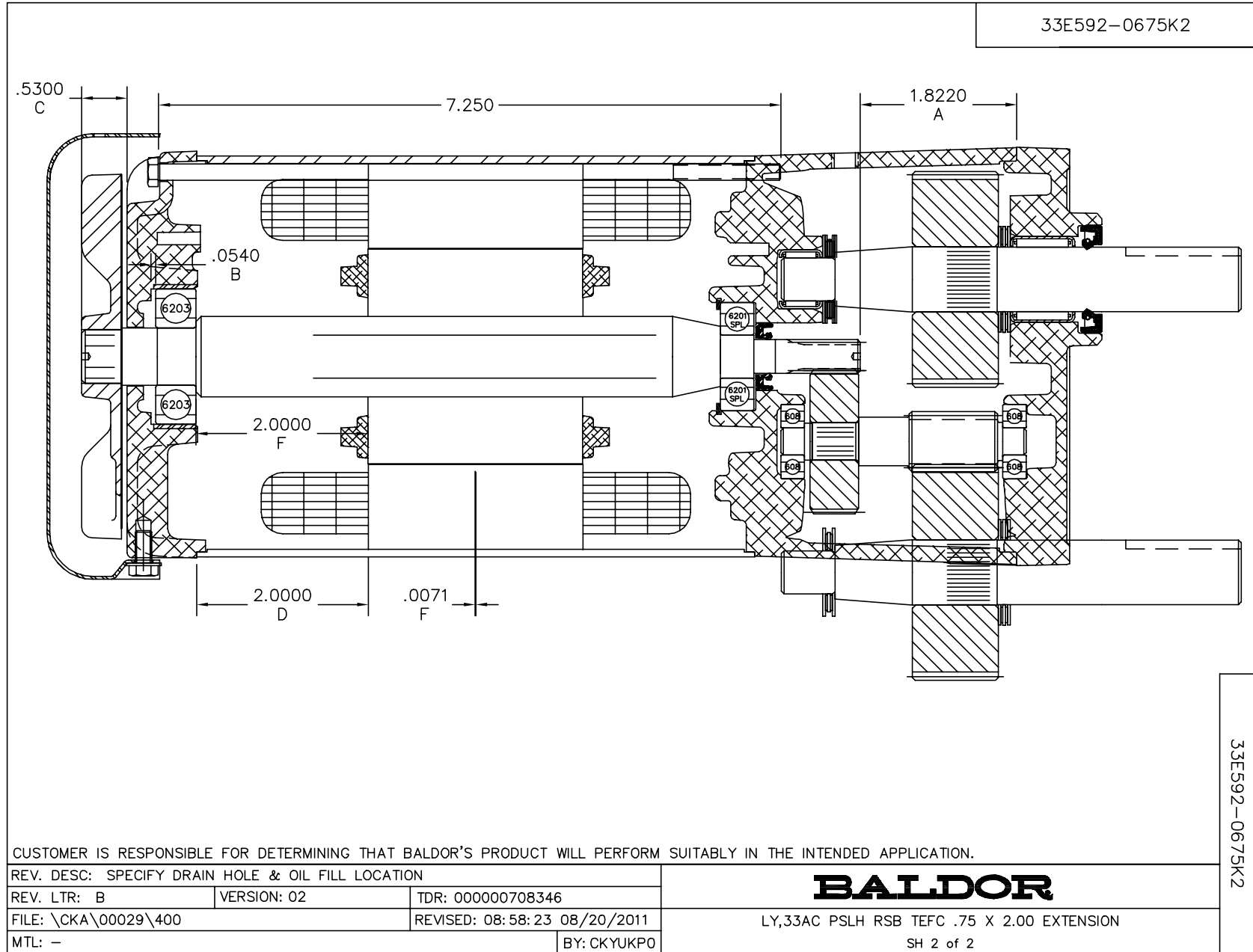
CAT.NO.	GMP3332						
SER.NO							
SPEC.	33E592-0675K2						
HP	1/3 TE						
VOLTS	208-230/460						
AMP	1.40-1.44/.72						
HZ	60					PH	3
AMB.	40					DUTY	CONT
CAP						CODE	-
SER.F.	1.00					CLASS	B
R.P.M.	86						
TORQ/IN LB	218						
RATIO	20:1						
APRV-CSA						APRV-UL	

Parts List		
Part Number	Description	Quantity
SA142310	SA 33E592-0675K2	1.000 EA
RA131533	RA 33E592-0675K2	1.000 EA
LC0005	CONN.DIA.,TY M,9-LD,DUAL VOLT,REVERSING	1.000 EA
HG0076A01CG	HSG,PSL EP 33AC LONG HOUSING	1.000 EA
BMH1714	WASHER,PREC 1.259"X.756"X.010"	2.000 EA
HW5002A95	N5002-125 32MM BEVELED INTERNAL RET RING	1.000 EA
HW4600D28	SEAL,10X20X4MM TCM #03907815PSCW	1.000 EA
HA4021A05	1/16 NPSF-HX SOC PIPE PLUG TAPER DRY SEA	1.000 EA
HW3064E05	1/8 X 1/2 PIN DRIVE LOK TYPE H	1.000 EA
34CB3002C	CB CAST W/.69 DIA HOLE	1.000 EA
34GS1029A01	GASKET, CONDUIT BOX	1.000 EA
51XB1016A07	10-16 X 7/16 HXWSSLD SERTYB	2.000 EA
11XW1032G06	10-32X3/8 HX WSHR HD,SLTDTYPE 23,GREEN	1.000 EA
34CB4517	CB LID 4 MTG HOLES .22 DIA STAMPED, FOR	1.000 EA
34GS1031A01	GASKET, FLAT CONDUIT BOX LID (LEXIDE)	1.000 EA
51XW0832A07	8-32 X .44, TAPTITE II, HEX WSHR SLTD SE	4.000 EA
33EP3100A01SP	EP,33AC ODE GP 6203 TEFC W/DRAIN	1.000 EA
HW5109A05	WASHER, WAVE SPRING FOR 40MM BORE SMALLE	1.000 EA
HA3100A83	THRUBOLT 10-32 X 7.250"	2.000 EA
33FN3000SP	EXTERNAL FAN, PLASTIC	1.000 EA
12XN0832A16	8-32 X 1.00" SLT HEX HD ZINC PLATED	1.000 EA
HW1003A08	WASHER, #8 EX TH LK, ZN (F/S)	1.000 EA
XY0832A02	8-32 HEX NUT	1.000 EA
33FH4000A01SP	FAN COVER, STAMPED	1.000 EA

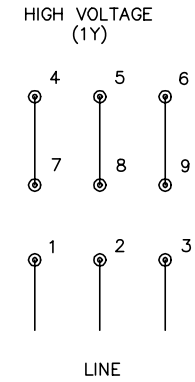
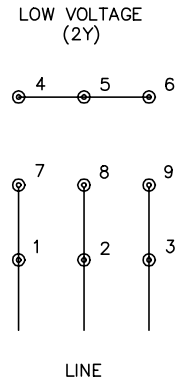
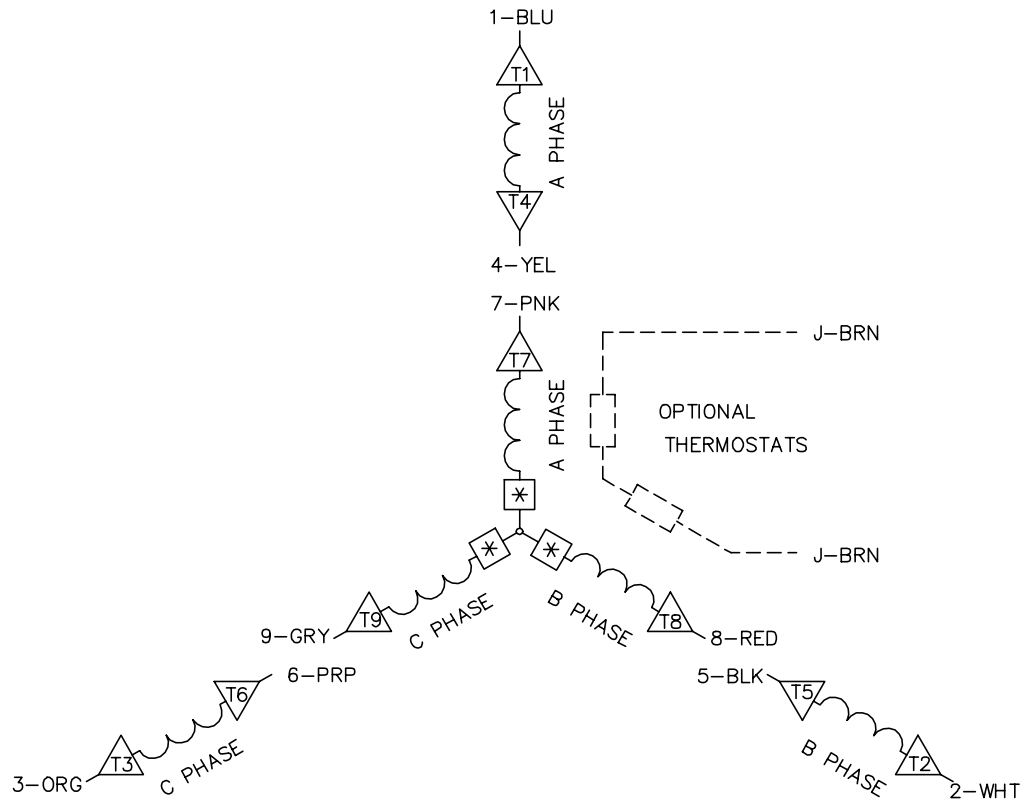
Parts List (continued)		
Part Number	Description	Quantity
11XT1032A06	10-32 X 3/8 HX WSHR HD SLTD TYPE 23	3.000 EA
BGS01220	SHAFT,ASSY PSLH LONG INT1 2RED 4.0/5.0	1.000 EA
BGS01221	SHAFT,ASSY PSLH LONG OUTP 2RED 0.0/4.0	1.000 EA
CG0012A01CG	CAP, PSL GEAR HEAD	1.000 EA
RM1020A22	O-RING .070 X 4.527	1.000 EA
HW4600D39	SEAL, .750 X 1.250 X .250 SINGLE	1.000 EA
BH1163A03	SCE1212 INA NEEDLE ROLLER BBG1027	1.000 EA
60XM2520A12	SCREW,PAN TORX 1/4-20X.750 THREAD FORMIN	4.000 EA
BMH1910	KEY 3/16X3/16X1 1/8 AUTO X	1.000 EA
BMH4712	KEY LOCKING RING 3/4"	1.000 EA
MJ1000B02	KLUB. GH6-460 GEAR OIL 1 LB	0.112 GA
MG1000G28SPP	400-0096 Haps Free Met. Gray Lacq.5 ga.	0.030 GA
NP1220A07	NP,AC STD AD NONE V CSA UL GEAR MOTOR	1.000 EA
LB1171	LABEL CARTON 6X6 ON LINE BLANK ROLLS	1.000 EA
CPA1001	PACKING GROUP OVERSIZED SINGLE	1.000 EA

Accessories		
Part Number	Description	Multiplier
LB75	BASE, L BRACKET 34 FRAME PSL KIT GRAY	A8





CD0005A05



NOTES:

1. INTERCHANGE ANY TWO LINE LEADS TO REVERSE ROTATION.
2. OPTIONAL THERMOSTATS ARE PROVIDED WHEN SPECIFIED.
3. ACTUAL NUMBER OF INTERNAL PARALLEL CIRCUITS MAY BE A MULTIPLE OF THOSE SHOWN ABOVE.
4. LEAD COLORS ARE OPTIONAL. LEADS MUST ALWAYS BE NUMBERED AS SHOWN.
5. =MAGNET WIRE COIL END WITH I.D. NUMBER.
6. =MAGNET WIRE COIL END WITH I.D. SYMBOL.
7. SEE CW PRINT FOR NEST TO NEST CROSSOVER CONNECTIONS.

REV. DESC: ADD NEST NOTE

REV. LTR: C

VERSION: 03

TDR: 000000445597

CD0005A05

FILE: \CKA\00024\847

REVISED: 12:51:06 11/15/2007

MTL: -

BY: CKMICRO

**BALDOR • DODGE • RELIANCE**

3PH, DV, 9 LEADS, CK

CD0005A05