

# **BALDOR® • RELIANCE**

**Product Information Packet**

**ELECTRIC MOTOR WHOLESALE.COM**

**IDXM7002**

**.33HP,1750RPM,3PH,60HZ,56C,3516M,XPFC,F1**

Part Detail							
Revision:	A	Status:	PRD/A	Change #:		Proprietary:	No
Type:	AC	Prod. Type:	3516M	Elec. Spec:	35WGQ903	CD Diagram:	
Enclosure:	XPFC	Mfg Plant:		Mech. Spec:	35M998	Layout:	
Frame:	56C	Mounting:	F1	Poles:	04	Created Date:	06-14-2011
Base:	RG	Rotation:	R	Insulation:	F	Eff. Date:	08-29-2011
Leads:	9#18	Literature:		Elec. Diagram:		Replaced By:	

**Nameplate NP0887XP**

NO.		TEMP CODE	T3C						
SPEC.	35M998Q903G1	MX RPM	2700						
CAT.NO.	IDXM7002	INV.TYPE	PWM						
HP	.33	C HP FR	60	C HP TO	90				
VOLTS	230/460	CT HZ FROM	6	CT HZ TO	60				
AMPS	1.2/6	VT HZ FROM	6	VT HZ TO	60				
RPM	1750	DES	B	WK2	0.095	PH	3	CL	F
HZ	60	SER.F.	1.00	NOM.EFF.	80	SL HZ	1.7		
MAG CUR	.82/.41								
RATING	40C AMB-CONT								
FRAME	56C	CC							
S/N		55C RISE							

Parts List		
Part Number	Description	Quantity
SA225481	SA 35M998Q903G1	1.000 EA
RA212577	RA 35M998Q903G1	1.000 EA
35CB3001A01SP	EXPL CONDUIT BOX, MACH, 1/2" PIPE TAP LE	1.000 EA
11XT0832G06	8-32 X 3/8 TY 23 TAPPING	1.000 EA
HW3001B01	003SS CUP WASHER, FOR #8 SCREW	1.000 EA
35EP3700A01SP	FR ENDPLATE, XPFC	1.000 EA
HW5100A03SP	WAVY WASHER (W1543-017)	1.000 EA
35EP3702A01SP	PU EP-205 BRG-35X-56C-143-5TC	1.000 EA
51XN1032A20	10-32 X 1 1/4 HX WS SL SR	2.000 EA
HA3013A01	1/2-20X5/8 SPL.HX BOLT	2.000 EA
HW3021C06	3/32 DI X .625 PIN (F/S)	2.000 EA
XY3118A12	5/16-18 HEX NUT DIRECTIONAL SERRATION	4.000 EA
51XB1214A16	12-14X1.00 HXWSSLD SERTYB	1.000 EA
35FH4005A01SP	IEC FH NO GREASER W/AUTOPHORETIC PRIMER	1.000 EA
51XW1032A06	10-32 X .38, TAPTITE II, HEX WSHR SLTD S	3.000 EA
35CB3500A01SP	CONDUIT BOX LID, MACH	1.000 EA
51XN2520A16	SCREW, HEX WS SLT, ZN, 1/4-20 X 1.00	4.000 EA
HW2501D13SP	KEY, 3/16 SQ X 1.375	1.000 EA
HA7000A04	KEY RETAINER 0.625 DIA SHAFTS	1.000 EA
85XU0407S04	4X1/4 U DRIVE PIN STAINLESS	8.000 EA
NP0018	NP- XP CONDUIT BOX DO NOT MAKE SELLABLE	1.000 EA
MJ1000A75	GREASE, POLYREX EM EXXON	0.050 LB
35FN3002A05SP	EXFN, PLASTIC, 6.376 OD, .638 ID	1.000 EA
MG1025Z20	ACTIVATOR WILKOFAS 060.32	0.010 GA

Parts List (continued)		
Part Number	Description	Quantity
MG1025G29	PAINT 789.205 DARK GRAY METALLIC (USE W/	0.017 GA
HA3104A06	THRUBOLT 5/16-18 X 8.50 OHIO ROD	4.000 EA
LB1119	WARNING LABEL	1.000 EA
LB1125C01	STD (STOCK) CARTON LABEL BALDOR WITH FLA	1.000 EA
LC0145B01	CONNECTION LABEL	1.000 EA
NP0887XP	UL/CSA, CLI GP-D, CLII GP-F&G, INV	1.000 EA
36PA1000	PACK GROUP W/LB5001	1.000 EA

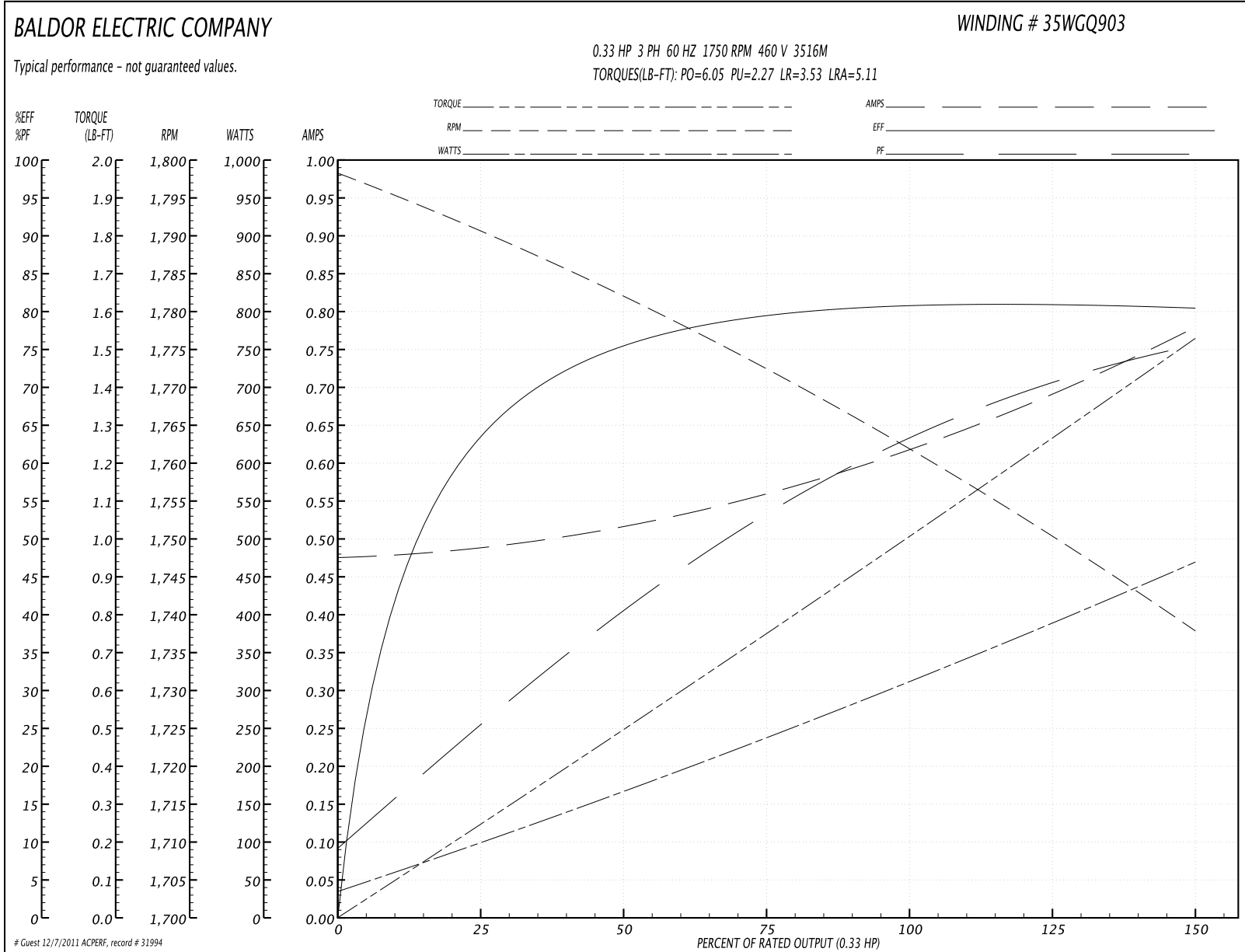
**Performance Data at 460V, 60Hz, 0.33HP (Typical performance - Not guaranteed values)**
**General Characteristics**

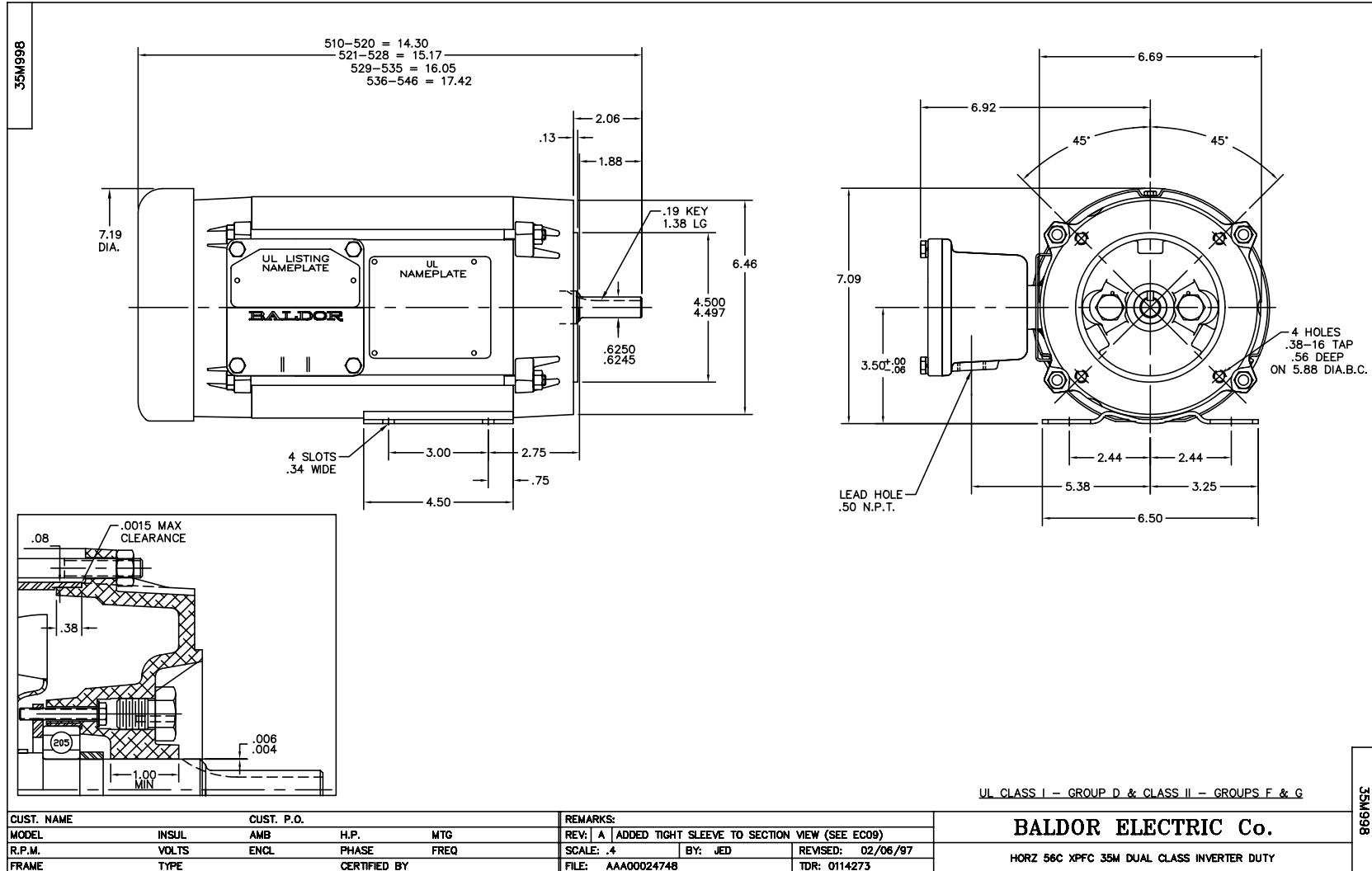
<b>Full Load Torque:</b>	1.03 LB-FT	<b>Start Configuration:</b>	DOL
<b>No-Load Current:</b>	0.475 Amps	<b>Break-Down Torque:</b>	6.05 LB-FT
<b>Line-line Res. @ 25°C.:</b>	38.1 Ohms A Ph / 0.0 Ohms B Ph	<b>Pull-Up Torque:</b>	2.27 LB-FT
<b>Temp. Rise @ Rated Load:</b>	29 C	<b>Locked-Rotor Torque:</b>	3.53 LB-FT
<b>Temp. Rise @ S.F. Load:</b>		<b>Starting Current:</b>	5.11 Amps

**Load Characteristics**

% of Rated Load	25	50	75	100	125	150	S.F.
<b>Power Factor:</b>	28.0	43.0	54.0	64.0	72.0	75.0	0.0
<b>Efficiency:</b>	66.4	75.5	78.8	81.5	81.6	80.0	0.0
<b>Speed:</b>	1790.0	1781.0	1771.0	1761.0	1750.0	1738.0	0.0
<b>Line Amperes:</b>	0.488	0.521	0.579	0.62	0.676	0.789	0.0

Performance Graph at 460V, 60Hz, 0.33HP Typical performance - Not guaranteed values





CD0005

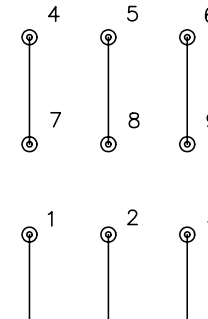


LOW VOLTAGE  
(2Y)



LINE

HIGH VOLTAGE  
(1Y)



LINE

NOTES:

1. INTERCHANGE ANY TWO LINE LEADS TO REVERSE ROTATION.
2. OPTIONAL THERMOSTATS ARE PROVIDED WHEN SPECIFIED.
3. ACTUAL NUMBER OF INTERNAL PARALLEL CIRCUITS MAY BE A MULTIPLE OF THOSE SHOWN ABOVE.
4. LEAD COLORS ARE OPTIONAL. LEADS MUST ALWAYS BE NUMBERED AS SHOWN.

REV. DESC: REVISE TO SHOW OPTIONAL COLORS			
REV. LTR: E	BY: JLP	REVISED: 01/19/99 10:15	TDR: 0171435
900000		FILE: AAA00005140	MDL: -
		MTL: -	

**BALDOR ELECTRIC Co.**

3PH, DV, 9 LEADS

CD0005