

BALDOR® • RELIANCE

Product Information Packet

ELECTRIC MOTOR WHOLESAL.COM

IDXM7058T

25HP,1780RPM,3PH,60HZ,284T,X1050M,XPFC

Part Detail							
Revision:	F	Status:	PRD/A	Change #:		Proprietary:	No
Type:	AC	Prod. Type:	1050M	Elec. Spec:	10WGW717	CD Diagram:	
Enclosure:	XPFC	Mfg Plant:		Mech. Spec:	10E647	Layout:	
Frame:	284T	Mounting:	F1	Poles:	04	Created Date:	
Base:	RG	Rotation:	R	Insulation:	F	Eff. Date:	12-02-2010
Leads:	9#10	Literature:		Elec. Diagram:		Replaced By:	

Nameplate NP0890XP

NO.		TEMP CODE	T2B						
SPEC.	10E647W717G1	MX RPM	2700						
CAT.NO.	IDXM7058T	INV.TYPE	PWM						
HP	25	C HP FR	60	C HP TO	90				
VOLTS	230/460	CT HZ FROM	30	CT HZ TO	60				
AMPS	61/30.5	VT HZ FROM	6	VT HZ TO	60				
RPM	1780	DES	B	WK2	3.98	PH	3	CL	F
HZ	60	SER.F.	1.00	NOM.EFF.	93.6	SL HZ	0.80		
MAG CUR	23.8/11.9								
RATING	40C AMB-CONT								
FRAME	284T	CC	010A						
S/N									

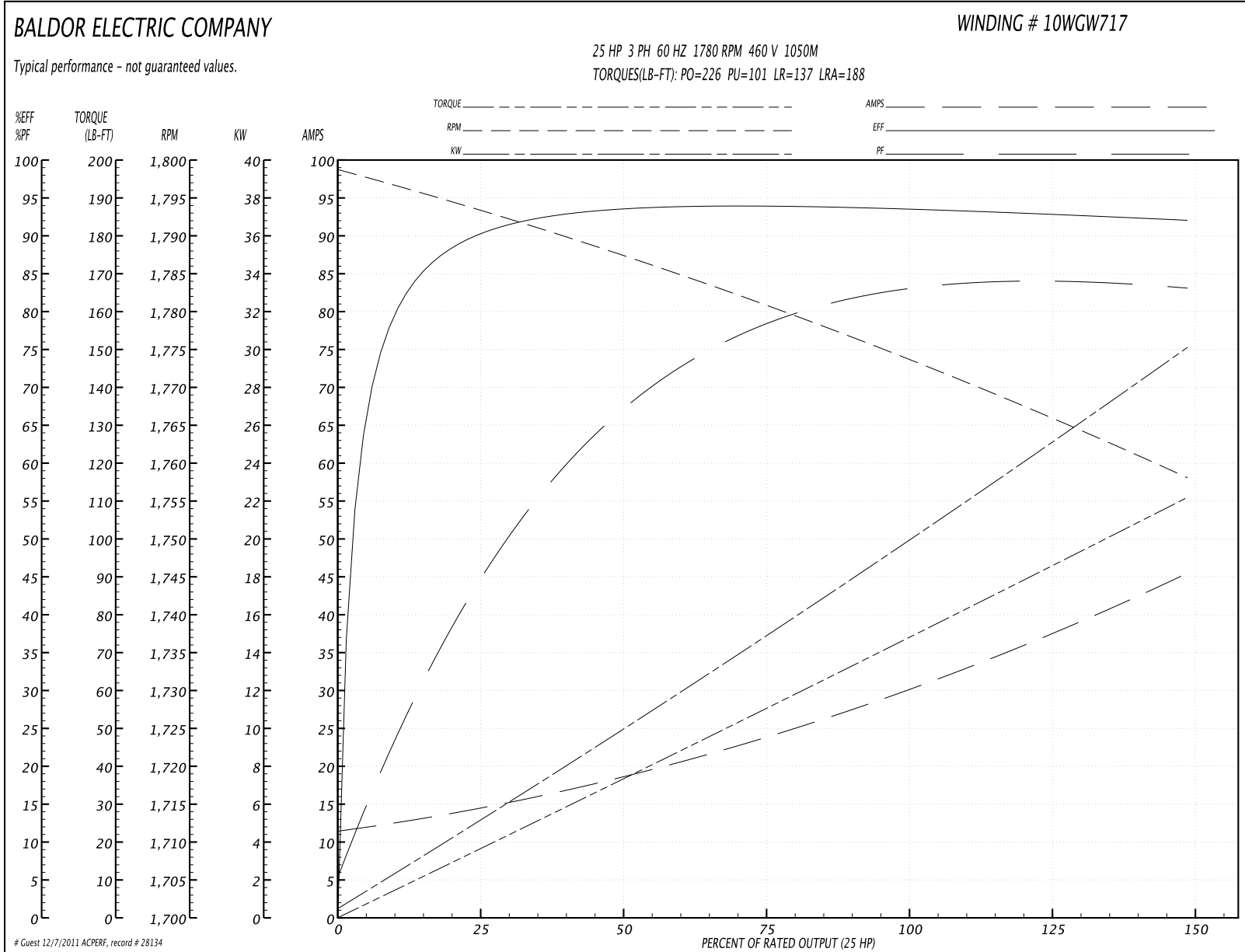
Parts List		
Part Number	Description	Quantity
SA109275	SA 10E647W717G1	1.000 EA
RA100767	RA 10E647W717G1	1.000 EA
12CB1001A02	K.O.BOX, MACH X-PROOF; 1.25 NPT HOLE	1.000 EA
10XN3118K16	5/16-18 X 1" GRADE #5, STL, ZINC PLATE	4.000 EA
HW1001A31	LOCKWASHER 5/16, ZINC PLT.591 OD, .319 I	4.000 EA
WD1000B16	KPA-4C BURNDY TERMINAL	1.000 EA
10XN2520K06	1/4-20 X 3/8" HX HD SCREWGRADE 5, ZINC P	1.000 EA
HW1001A25	LOCKWASHER 1/4, ZINC PLT .493 OD, .255 I	1.000 EA
10EP1701A01	FR ENDPLATE, MACH	1.000 EA
HA3050A03	3/8-16 X 2.25" GRADE 8 BOLT	4.000 EA
HW1001A38	LOCKWASHER 3/8, ZINC PLT .688 OD, .382 I	4.000 EA
HW5100A11	W3917-042 WVY WSHR (WB)	1.000 EA
10EP1709A08	PU ENDPLATE, X-PROOF W/LABYRINTH SHAFT G	1.000 EA
10XN2520K40	1/4-20 X 2-1/2 HEX HD CAPSCREW,GRADE 5,Z	4.000 EA
HW1001A25	LOCKWASHER 1/4, ZINC PLT .493 OD, .255 I	4.000 EA
HA3050A03	3/8-16 X 2.25" GRADE 8 BOLT	4.000 EA
HW1001A38	LOCKWASHER 3/8, ZINC PLT .688 OD, .382 I	4.000 EA
10FH1008A01	310 FAN HOUSING X-PROOF MACH.	1.000 EA
10XN3118K12	5/16-18 X .75 GRADE 5, ZINC PLATED	3.000 EA
HW1001A31	LOCKWASHER 5/16, ZINC PLT.591 OD, .319 I	3.000 EA
12CB1501A01	COND.BOX LID, MACH., X-PROOF, 310,312	1.000 EA
10XN3816K20	3/8-16 X 1.25 HEX HD CAP GRADE 5	6.000 EA
HW1001A38	LOCKWASHER 3/8, ZINC PLT .688 OD, .382 I	6.000 EA
HW2501H28	KEY, 1/2 SQ X 3.250	1.000 EA

Parts List (continued)		
Part Number	Description	Quantity
LB1115	LABEL,LIFTING DEVICE	1.000 EA
HW4500A20	1/8NPT SL PIPE PLUG	2.000 EA
MJ1000A75	GREASE, POLYREX EM EXXON	0.130 LB
HW4500A20	1/8NPT SL PIPE PLUG	2.000 EA
MG1025G05	PAINT 789.201 (WILCO) DARK GRAY METALLIC	0.070 GA
85XU0407A04	#4-7 X 1/4 DRIVE PIN	6.000 EA
LB1073	LABEL, UL/CSA "XP"	1.000 EA
LB5040	INSTRUCTION TAG, AC & DC	1.000 EA
09FN5001B02	EXT FAN ASS'Y W/09FN3001B02	1.000 EA
LB1119	WARNING LABEL	1.000 EA
LB1125C01	STD (STOCK) CARTON LABEL BALDOR WITH FLA	4.000 EA
LC0145B01	CONNECTION LABEL	1.000 EA
NP0890XP	UL/CSA, CLI GP-D,INV	1.000 EA
12PA1000	PACKAGING GROUP COMBINED PRINT PK1024A06	1.000 EA

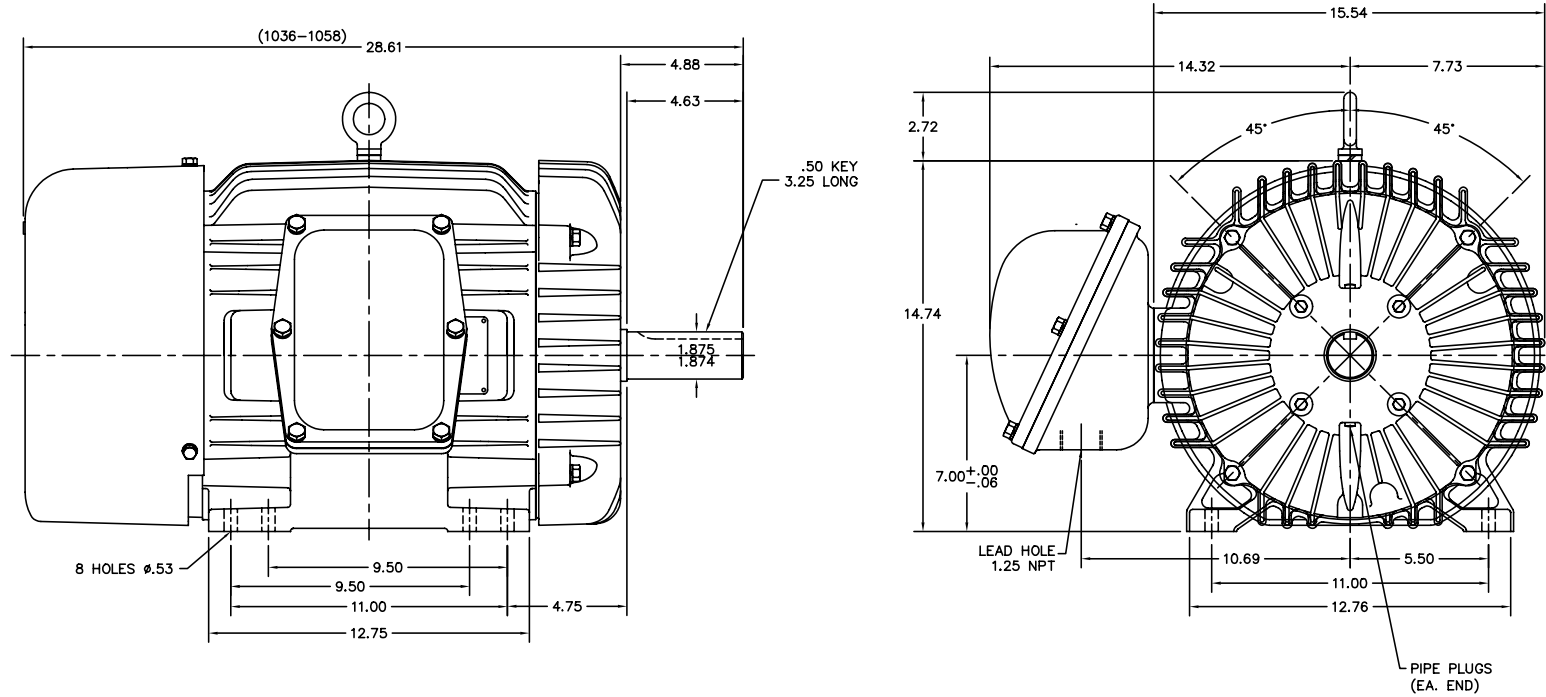
Performance Data at 460V, 60Hz, 25.0HP (Typical performance - Not guaranteed values)

General Characteristics							
Full Load Torque:	74.0 LB-FT			Start Configuration:	DOL		
No-Load Current:	11.9 Amps			Break-Down Torque:	226.0 LB-FT		
Line-line Res. @ 25°C.:	0.286 Ohms A Ph / 0.0 Ohms B Ph			Pull-Up Torque:	101.0 LB-FT		
Temp. Rise @ Rated Load:	51 C			Locked-Rotor Torque:	137.0 LB-FT		
Temp. Rise @ S.F. Load:				Starting Current:	188.0 Amps		
Load Characteristics							
% of Rated Load	25	50	75	100	125	150	S.F.
Power Factor:	47.0	69.0	78.0	82.0	84.0	84.0	0.0
Efficiency:	90.2	93.4	93.9	93.6	92.9	92.0	0.0
Speed:	1793.0	1787.0	1781.0	1774.0	1766.0	1758.0	0.0
Line Amperes:	13.9	18.4	24.1	30.5	37.5	45.2	0.0

Performance Graph at 460V, 60Hz, 25.0HP Typical performance - Not guaranteed values



10LYE647



CUSTOMER IS RESPONSIBLE FOR DETERMINING THAT MOTOR PERFORMANCE IS SUITABLE IN THE APPLICATION.

REV. DESC: CHG'D PUEP TO 10EP1709A08			
REV. LTR: A	BY: RAR	REVISED: 08/22/00 3:39	TDR: 0206963
FILE: AAA00063314		REF: -	
MTL: -			

BALDOR ELECTRIC Co.

STD HORZ XPFC 284-6T CLI, GP.D INV. DUTY

10LYE647

CD0005



LOW VOLTAGE
(2Y)



LINE

HIGH VOLTAGE
(1Y)



LINE

NOTES:

1. INTERCHANGE ANY TWO LINE LEADS TO REVERSE ROTATION.
2. OPTIONAL THERMOSTATS ARE PROVIDED WHEN SPECIFIED.
3. ACTUAL NUMBER OF INTERNAL PARALLEL CIRCUITS MAY BE A MULTIPLE OF THOSE SHOWN ABOVE.
4. LEAD COLORS ARE OPTIONAL. LEADS MUST ALWAYS BE NUMBERED AS SHOWN.

REV. DESC: REVISE TO SHOW OPTIONAL COLORS

REV. LTR: E BY: JLP

REVISED: 01/19/99 10:15

TDR: 0171435

900000

FILE: AAA00005140

MDL: -

MTL: -

BALDOR ELECTRIC Co.

3PH, DV, 9 LEADS

CD0005