

# **BALDOR® • RELIANCE**

**Product Information Packet**

**ELECTRIC MOTOR WHOLESAL.COM**

**IDXM7170T**

**10HP,1760RPM,3PH,60HZ,215TC,0748M,XPFC,F**

Part Detail							
Revision:	E	Status:	PRD/A	Change #:		Proprietary:	No
Type:	AC	Prod. Type:	0748M	Elec. Spec:	07WGX776	CD Diagram:	
Enclosure:	XPFC	Mfg Plant:		Mech. Spec:	07H517	Layout:	
Frame:	215TC	Mounting:	F1	Poles:	04	Created Date:	02-16-2006
Base:	RG	Rotation:	R	Insulation:	F	Eff. Date:	12-02-2010
Leads:	9#14	Literature:		Elec. Diagram:		Replaced By:	

**Nameplate NP0890XP**

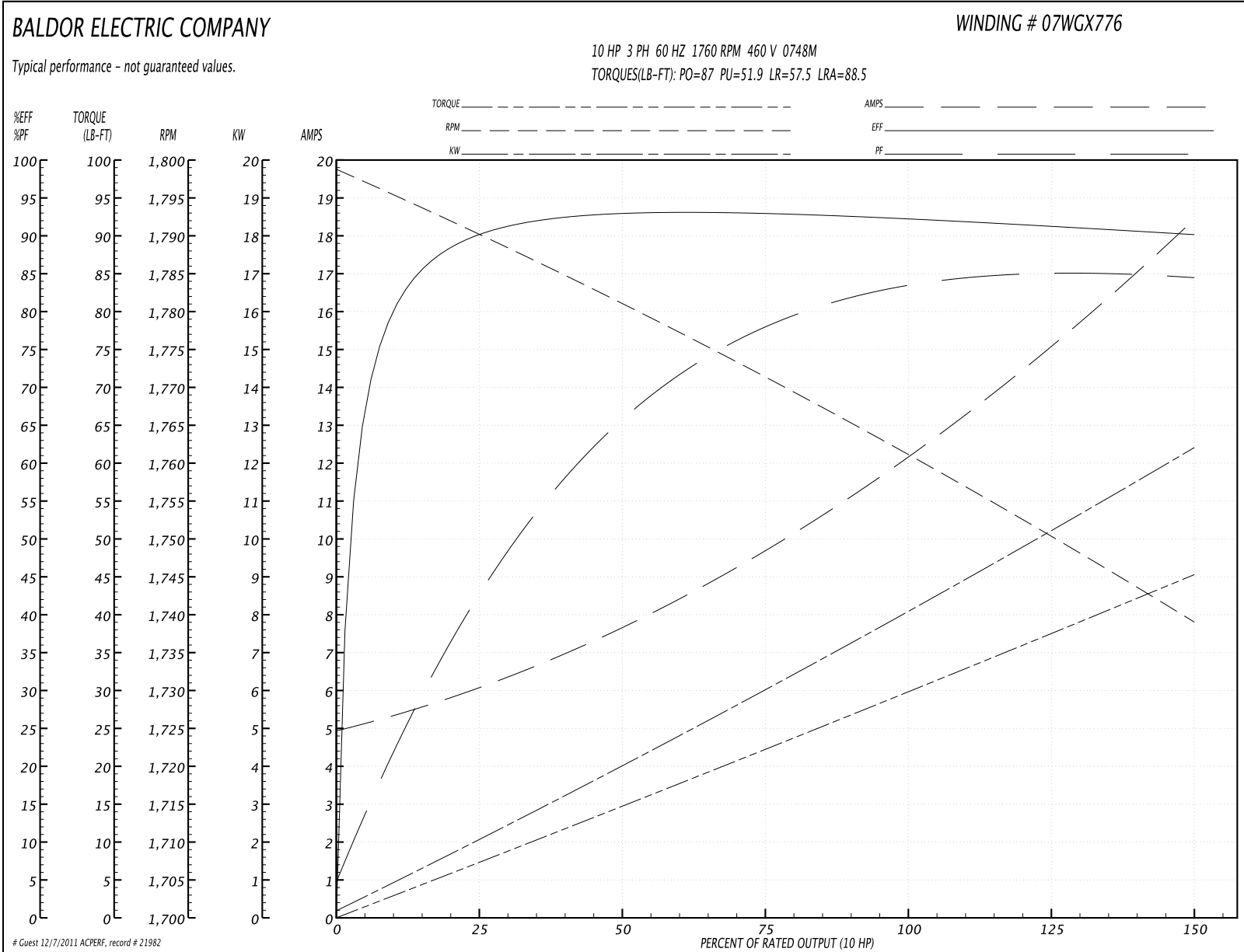
NO.		TEMP CODE	T2B						
SPEC.	07H517X776G1	MX RPM	2700						
CAT.NO.	IDXM7170T	INV.TYPE	PWM						
HP	10	C HP FR	60	C HP TO	90				
VOLTS	208-230/460	CT HZ FROM	30	CT HZ TO	60				
AMPS	26.3-25/12.5	VT HZ FROM	6	VT HZ TO	60				
RPM	1760	DES	A	WK2	1.18	PH	3	CL	F
HZ	60	SER.F.	1.00	NOM.EFF.	92.4	SL HZ	1.3		
MAG CUR	10.2/5.1								
RATING	40C AMB-CONT								
FRAME	215TC	CC	010A						
S/N									

Parts List		
Part Number	Description	Quantity
SA139139	SA 07H517X776G1	1.000 EA
RA128645	RA 07H517X776G1	1.000 EA
37FN3002C01	EXFN, PLASTIC, 6.00 OD, 1.155 ID	1.000 EA
HA3210E08	.250X 7/8 PIN 312-57	1.000 EA
HW3201A05	3/8-16 EYEBOLT	1.000 EA
07CB1000A01	CONDUIT BOX MACH	1.000 EA
10XN3118A16	5/16-18X1 HEX HD CAP	4.000 EA
HW1001A31	LOCKWASHER 5/16, ZINC PLT.591 OD, .319 I	4.000 EA
11XW1032G06	10-32 X .38, TAPTITE II, HEX WSHR SLTD U	1.000 EA
WD1000B17	KPA-8C BURNDY TERMINAL	1.000 EA
07EP1707A01	STD FRONT ENDPLATE EXPLOSION PROOF	1.000 EA
HW4500A19	1/4-28X1/4 SLOTTED PLUG F/S	2.000 EA
10XN3816K28	3/8-16 X 1.75 HEX HD CAP SCREW, GRADE 5	4.000 EA
HW1001A38	LOCKWASHER 3/8, ZINC PLT .688 OD, .382 I	4.000 EA
HW5100A06	W2420-025 WVY WSHR (WB)	1.000 EA
07EP1708A01	STANDARD FACE MOUNTED ENDPLATE EXPLOSEIO	1.000 EA
HW4500A19	1/4-28X1/4 SLOTTED PLUG F/S	2.000 EA
10XN3816K28	3/8-16 X 1.75 HEX HD CAP SCREW, GRADE 5	4.000 EA
HW1001A38	LOCKWASHER 3/8, ZINC PLT .688 OD, .382 I	4.000 EA
10XN2520A32	1/4 X 2 HEX HEAD CAP SCR, GRADE 2	4.000 EA
HW1001A25	LOCKWASHER 1/4, ZINC PLT .493 OD, .255 I	4.000 EA
07FH1003A01	STANDARD 307 EXPLOSION PROOF FAN HOUSING	1.000 EA
10XN2520A12	O1/4-20X 3/4 HEX HEAD CAP	4.000 EA
07CB1500A01	CONDUIT BOX LID MACH	1.000 EA

Parts List (continued)		
Part Number	Description	Quantity
10XN2520A16	1/4-20 X 1 HEX HEAD CAP SCR, ZINC PLATED	4.000 EA
HW1001A25	LOCKWASHER 1/4, ZINC PLT .493 OD, .255 I	4.000 EA
HW2501F21	KEY, 5/16 SQ X 2.375	1.000 EA
HA7000A02	KEY RETAINER RING, 1 1/8 DIA, 1 3/8 DIA	1.000 EA
LB1081	LABEL CSA XPROOF	1.000 EA
LB1115	LABEL,LIFTING DEVICE	1.000 EA
85XU0407S04	4X1/4 U DRIVE PIN STAINLESS	4.000 EA
MJ1000A75	GREASE, POLYREX EM EXXON	0.050 LB
51XB1214A20	12-14X1.25 HXWSSLD SERTYB	1.000 EA
MG1025Z20	ACTIVATOR WILKOFAS 060.32	0.010 GA
MG1025G29	PAINT 789.205 DARK GRAY METALLIC (USE W/	0.036 GA
LB1119	WARNING LABEL	1.000 EA
LB1125C01	STD (STOCK) CARTON LABEL BALDOR WITH FLA	1.000 EA
LC0145B01	CONNECTION LABEL	1.000 EA
NP0890XP	UL/CSA, CLI GP-D,INV	1.000 EA
07PA1011	PKG GRP, 07 CAST IRON PK1181	1.000 EA
10XL3808A28	3/8 X 1 3/4" LAG SCREW	2.000 EA

Performance Data at 460V, 60Hz, 10.0HP (Typical performance - Not guaranteed values)							
General Characteristics							
Full Load Torque:	29.8 LB-FT			Start Configuration:	DOL		
No-Load Current:	5.12 Amps			Break-Down Torque:	87.0 LB-FT		
Line-line Res. @ 25°C.:	0.973 Ohms A Ph / 0.0 Ohms B Ph			Pull-Up Torque:	51.9 LB-FT		
Temp. Rise @ Rated Load:	60 C			Locked-Rotor Torque:	57.5 LB-FT		
Temp. Rise @ S.F. Load:				Starting Current:	88.5 Amps		
Load Characteristics							
% of Rated Load	25	50	75	100	125	150	S.F.
Power Factor:	44.0	67.0	78.0	82.0	84.0	85.0	0.0
Efficiency:	90.0	92.9	93.1	92.5	91.4	90.1	0.0
Speed:	1790.0	1781.0	1771.0	1762.0	1750.0	1739.0	0.0
Line Amperes:	5.84	7.52	9.75	12.3	15.2	18.3	0.0

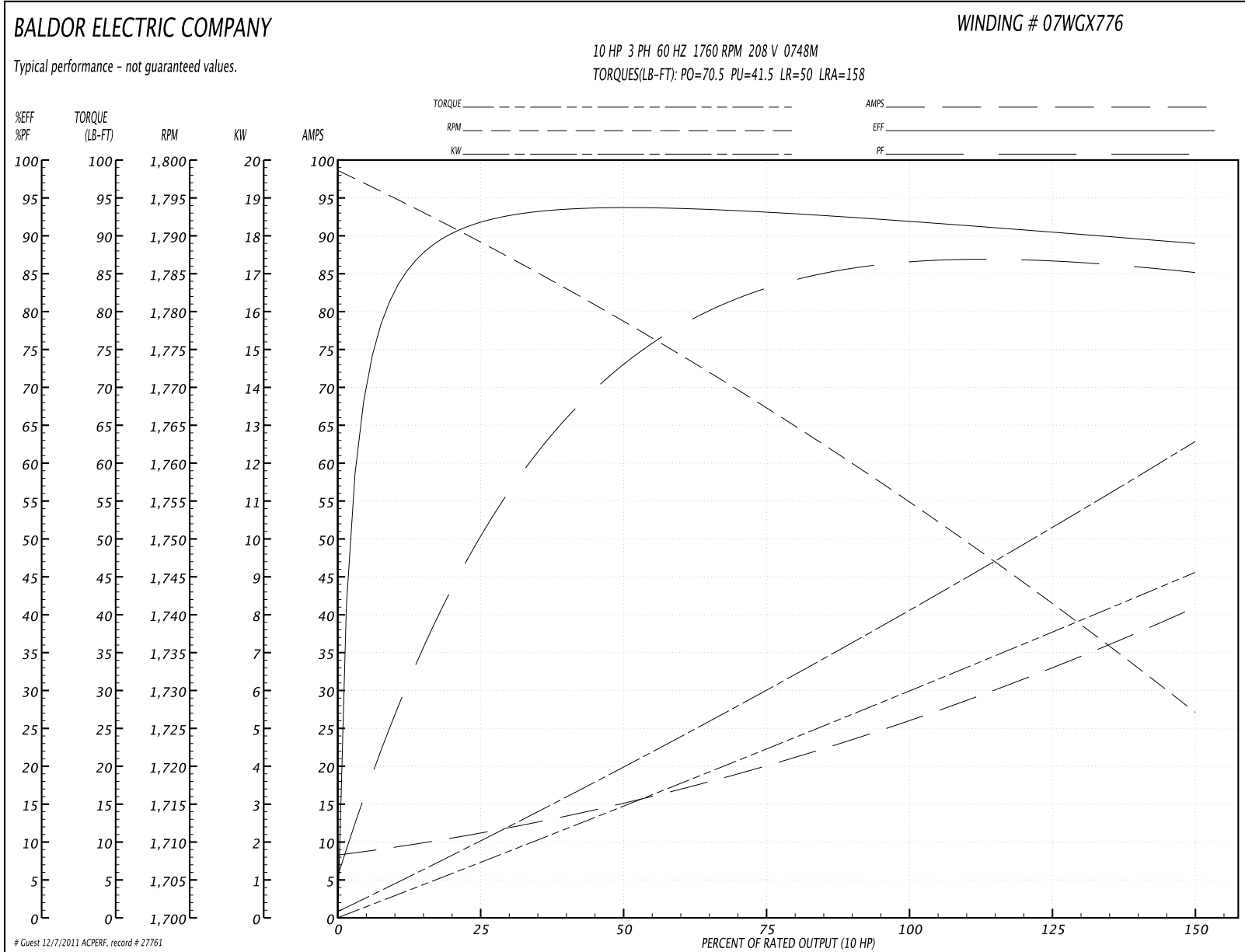
Performance Graph at 460V, 60Hz, 10.0HP Typical performance - Not guaranteed values



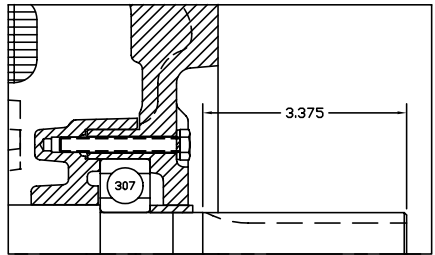
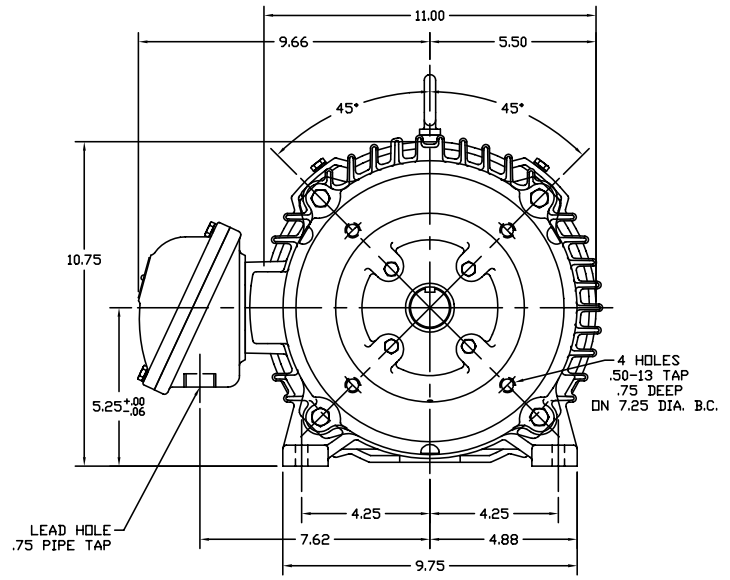
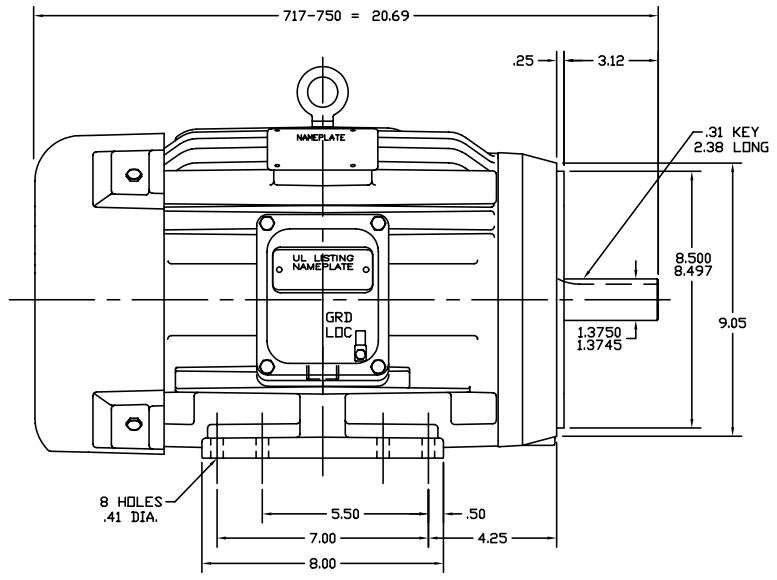
**Performance Data at 208V, 60Hz, 10.0HP (Typical performance - Not guaranteed values)**

General Characteristics							
Full Load Torque:	30.0 LB-FT			Start Configuration:	DOL		
No-Load Current:	8.71 Amps			Break-Down Torque:	70.5 LB-FT		
Line-line Res. @ 25°C.:	0.24 Ohms A Ph / 0.0 Ohms B Ph			Pull-Up Torque:	41.5 LB-FT		
Temp. Rise @ Rated Load:	64 C			Locked-Rotor Torque:	50.0 LB-FT		
Temp. Rise @ S.F. Load:				Starting Current:	158.0 Amps		
Load Characteristics							
% of Rated Load	25	50	75	100	125	150	S.F.
Power Factor:	53.0	74.0	83.0	85.0	86.0	86.0	0.0
Efficiency:	91.0	93.5	93.1	92.2	90.4	89.0	0.0
Speed:	1789.0	1778.0	1767.0	1756.0	1741.0	1727.0	0.0
Line Amperes:	10.6	14.9	20.3	26.4	33.2	40.7	0.0

Performance Graph at 208V, 60Hz, 10.0HP Typical performance - Not guaranteed values



07H517



PULLEY END DETAIL

UL CLASS I - GROUP D

CUST. NAME	CUST. P.O.				REMARKS:		
MODEL	INSUL	AMB	H.P.	MTG	REV: A	REMOVED CL II GRP F & G FROM DWG.	
R.P.M.	VOLTS	ENCL	PHASE	FREQ	SCALE: .3	BY: LH	REVISED: 03/29/96
FRAME	TYPE	CERTIFIED BY		FILE: AAA00027999	TDR: 0093930		

**BALDOR ELECTRIC Co.**

HORZ NEMA 213-5TC XPFC 07M CL I-GP D (INVERTER DUTY)

07H517

CD0005



LOW VOLTAGE  
(2Y)



LINE

HIGH VOLTAGE  
(1Y)



LINE

NOTES:

1. INTERCHANGE ANY TWO LINE LEADS TO REVERSE ROTATION.
2. OPTIONAL THERMOSTATS ARE PROVIDED WHEN SPECIFIED.
3. ACTUAL NUMBER OF INTERNAL PARALLEL CIRCUITS MAY BE A MULTIPLE OF THOSE SHOWN ABOVE.
4. LEAD COLORS ARE OPTIONAL. LEADS MUST ALWAYS BE NUMBERED AS SHOWN.

REV. DESC: REVISE TO SHOW OPTIONAL COLORS			
REV. LTR: E	BY: JLP	REVISED: 01/19/99 10:15	TDR: 0171435
90000		FILE: AAA00005140	MDL: -
		MTL: -	

**BALDOR ELECTRIC Co.**

3PH, DV, 9 LEADS

CD0005