

# **BALDOR® • RELIANCE**

**Product Information Packet**

**ELECTRIC MOTOR WHOLESAL.COM**

**JMM2524T**

**15HP, 1175RPM, 3PH, 60HZ, 284JM, 3958M, OPSB, F**

Part Detail									
Revision:	F	Status:	PRD/A	Change #:		Proprietary:	No		
Type:	AC	Prod. Type:	3958M	Elec. Spec:	39WG953	CD Diagram:			
Enclosure:	OPSB	Mfg Plant:		Mech. Spec:	39N090	Layout:			
Frame:	284JM	Mounting:	F1	Poles:	06	Created Date:	05-11-2005		
Base:	RG	Rotation:	R	Insulation:	B	Eff. Date:	03-28-2008		
Leads:	9#12	Literature:		Elec. Diagram:		Replaced By:			
Nameplate NP1256L									
CAT.NO.	JMM2524T								
SPEC.	39N090W953								
HP	15								
VOLTS	230/460								
AMP	42.6/21.3								
RPM	1175								
FRAME	284JM	HZ			60	PH	3		
SER.F.	1.15	CODE			H	DES	B	CLASS	B
NEMA-NOM-EFF	90.2	PF			73				
RATING	40C AMB-CONT								
CC	010A	USABLE AT 208V			50				
DE	6312	ODE			6208				
ENCL	OPSB	SN							

Parts List		
Part Number	Description	Quantity
SA128412	SA 39N090W953	1.000 EA
RA118579	RA 39N090W953	1.000 EA
HW3201A01	1/2-13 EYEBOLT	1.000 EA
09CB2800A03	ADAPTER MACH FOR 10CB3000	1.000 EA
19XW3118A08	.31-18 X .50 HEX WASHER HEAD TAPTITE II	2.000 EA
HW1001A31	LOCKWASHER 5/16, ZINC PLT.591 OD, .319 I	2.000 EA
10CB3000SP	STD KO BOX MODEL 310,312,314 MTRS W/2.00	1.000 EA
19XW3118A12	.31-18 X .75 HEX WASHER HEAD TAPTITE II	4.000 EA
HW1001A31	LOCKWASHER 5/16, ZINC PLT.591 OD, .319 I	4.000 EA
WD1000B16	KPA-4C BURNDY TERMINAL	1.000 EA
51XF2520A08	SCREW, HEX SER SLT HD, ZN 1/4-20 X .50 L	1.000 EA
39EP3200A01SP	FR/PU ENDPLATE, MACH	1.000 EA
HA4051A00	PLASTIC CAP FOR GREASE FITTING	1.000 EA
HA1101A01	RODENT SCREEN, 39 MTR	1.000 EA
51XW1032A06	10-32 X .38, TAPTITE II, HEX WSHR SLTD S	4.000 EA
HW5100A08	W3118-035 WVY WSHR (WB)	1.000 EA
10XN3118K40	5/16-18 X 2.50" HEX HD, GRADE 5	4.000 EA
HW1001A31	LOCKWASHER 5/16, ZINC PLT.591 OD, .319 I	4.000 EA
39EP1404A03	FACE MTD.EP MACH. 284-6 OPEN	1.000 EA
HA4051A00	PLASTIC CAP FOR GREASE FITTING	1.000 EA
HA1221	RODENT SCREEN 39EP1404	4.000 EA
HW3207A04	CABLE TIE 5 5/8 X .14" BLACK	8.000 EA
HW4600B41	V-RING SLINGER 2.125 X 2.880 X 0.280	1.000 EA
XY3816A12	3/8-16 FINISHED NUT	4.000 EA

Parts List (continued)		
Part Number	Description	Quantity
10CB3500SP	CONDUIT BOX LID, CAST	1.000 EA
51XW2520A12	.25-20 X .75, TAPTITE II, HEX WSHR SLTD	4.000 EA
HW2501E22	KEY, 1/4 SQ X 2.500	1.000 EA
LB1115	LABEL,LIFTING DEVICE	1.000 EA
HW4500A03	GREASE FITTING, .125 NPT 1610(ALEMITE) 8	1.000 EA
HW4500A20	1/8NPT SL PIPE PLUG	1.000 EA
MJ1000A75	GREASE, POLYREX EM EXXON	0.030 LB
HW4500A03	GREASE FITTING, .125 NPT 1610(ALEMITE) 8	1.000 EA
HW4500A20	1/8NPT SL PIPE PLUG	1.000 EA
MG1000G27	PAINT- S9282E CHARCOAL GREY 55 GALLONS	0.050 GA
85XU0407A04	#4-7 X 1/4 DRIVE PIN	2.000 EA
HA3113A12	THRUBOLT 3/8-16X18.250	4.000 EA
39AD2002A01	BAFFLE PLATE 39 OPEN, SLOTTED BAND MTRS	2.000 EA
LB1119	WARNING LABEL	1.000 EA
LC0181	CONNECTION LABEL	1.000 EA
NP1256L	ALUM, UL CSA CC, W/O THERMAL, LASER	1.000 EA
LB1125C01	STD (STOCK) CARTON LABEL BALDOR WITH FLA	4.000 EA
40PA1000	PACKAGING GROUP	1.000 EA

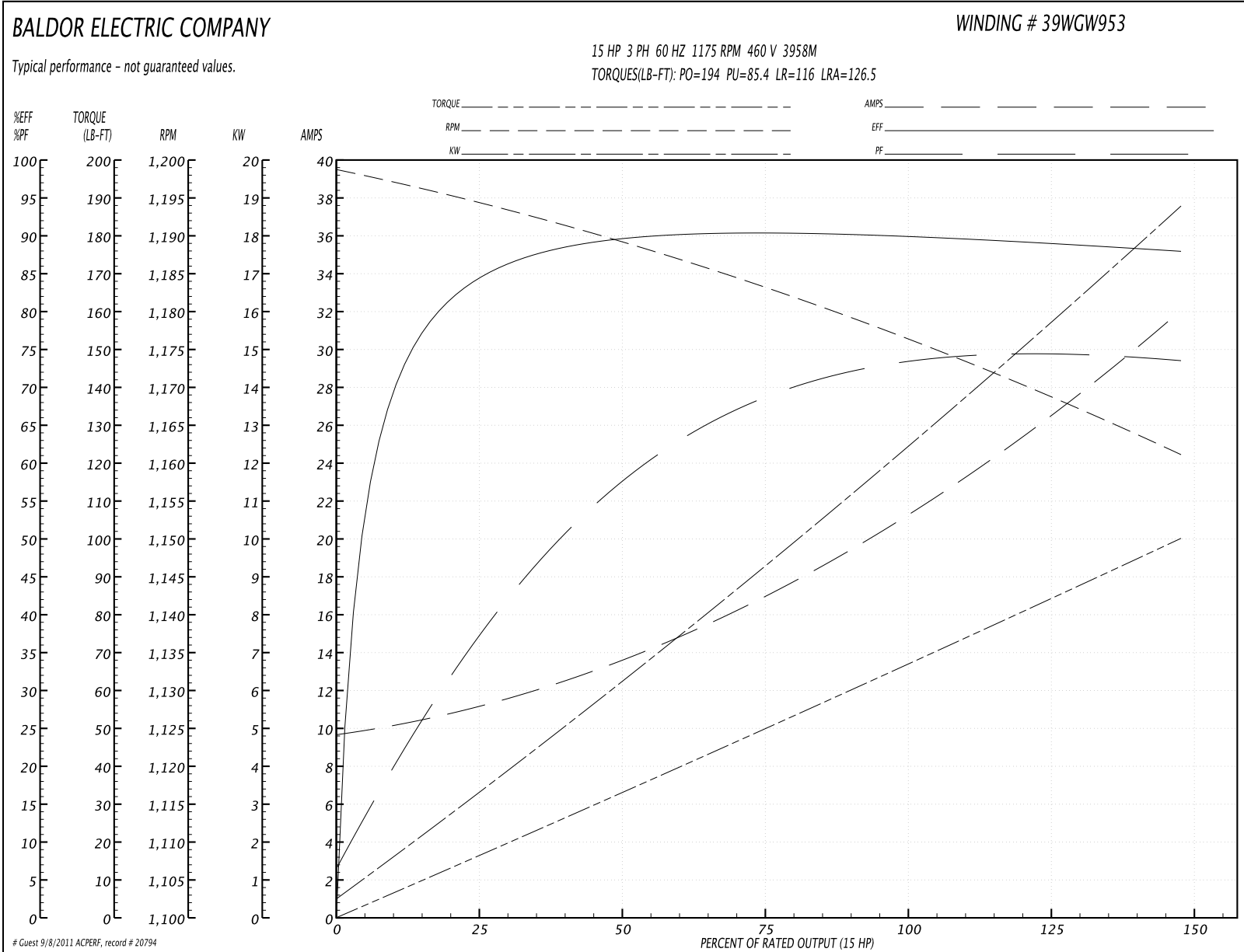
**Performance Data at 460V, 60Hz, 15.0HP (Typical performance - Not guaranteed values)**
**General Characteristics**

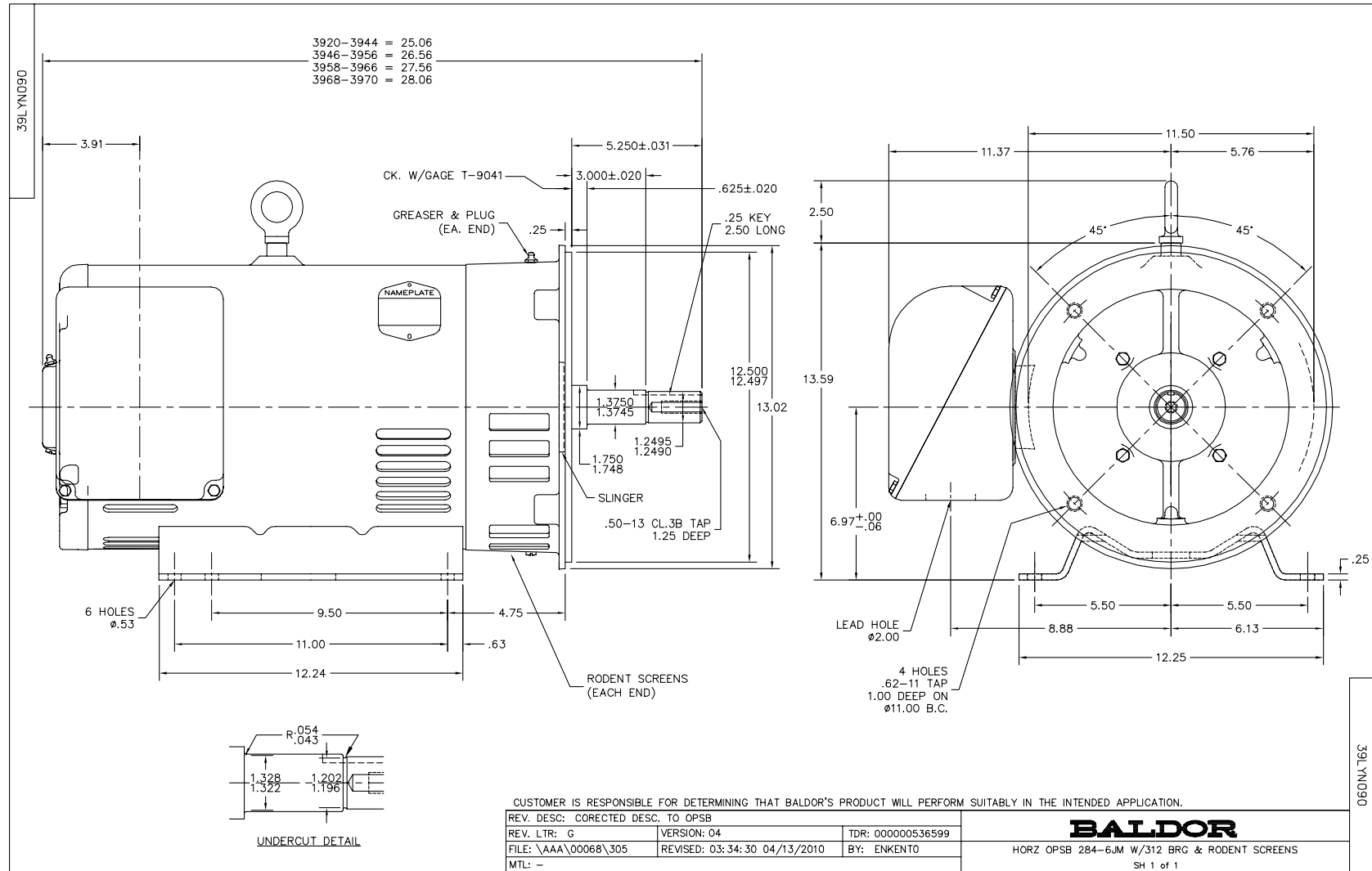
<b>Full Load Torque:</b>	66.8 LB-FT	<b>Start Configuration:</b>	DOL
<b>No-Load Current:</b>	9.8 Amps	<b>Break-Down Torque:</b>	194.0 LB-FT
<b>Line-line Res. @ 25°C.:</b>	0.569 Ohms A Ph / 0.0 Ohms B Ph	<b>Pull-Up Torque:</b>	85.4 LB-FT
<b>Temp. Rise @ Rated Load:</b>	45 C	<b>Locked-Rotor Torque:</b>	116.0 LB-FT
<b>Temp. Rise @ S.F. Load:</b>	61 C	<b>Starting Current:</b>	126.5 Amps

**Load Characteristics**

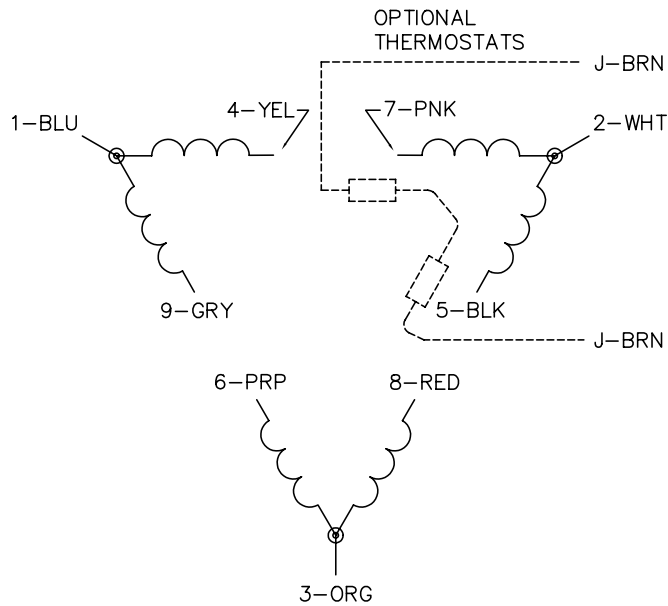
<b>% of Rated Load</b>	<b>25</b>	<b>50</b>	<b>75</b>	<b>100</b>	<b>125</b>	<b>150</b>	<b>S.F.</b>
<b>Power Factor:</b>	38.0	58.0	68.0	73.0	75.0	75.0	74.0
<b>Efficiency:</b>	83.7	89.3	90.3	90.2	89.2	87.8	89.6
<b>Speed:</b>	1194.0	1189.0	1183.0	1177.0	1169.0	1161.0	1172.0
<b>Line Amperes:</b>	11.01	13.53	17.13	21.3	26.3	32.0	24.3

Performance Graph at 460V, 60Hz, 15.0HP Typical performance - Not guaranteed values

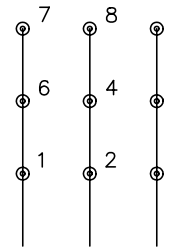




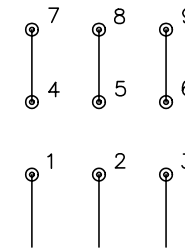
CD0180



LOW VOLTAGE  
(2D)



HIGH VOLTAGE  
(1D)



NOTES:

1. INTERCHANGE ANY TWO LINE LEADS TO REVERSE ROTATION.
2. OPTIONAL THERMOSTATS ARE PROVIDED WHEN SPECIFIED.
3. ACTUAL NUMBER OF INTERNAL PARALLEL CIRCUITS MAY BE A MULTIPLE OF THOSE SHOWN ABOVE.
4. LEAD COLORS ARE OPTIONAL. LEADS MUST ALWAYS BE NUMBERED AS SHOWN.

REV. DESC: REVISE TO SHOW OPTIONAL COLORS			
REV. LTR: C	BY: JLP	REVISED: 01/21/99 2:28	TDR: 0171435
0810D0		FILE: AAA00005148	MDL: -
		MTL: -	

**BALDOR ELECTRIC Co.**

3PH, DV, 9 LEADS, DELTA CONNECTION

CD0180