

BALDOR® • RELIANCE

Product Information Packet

ELECTRIC MOTOR WHOLESAL.COM

JMWDM3713T

15HP,3480RPM,3PH,60HZ,215JM,3748M,TEFC,F

Part Detail							
Revision:	A	Status:	PRD/A	Change #:		Proprietary:	No
Type:	AC	Prod. Type:	3748M	Elec. Spec:	37WGS632	CD Diagram:	
Enclosure:	TEFC	Mfg Plant:		Mech. Spec:	37H883	Layout:	
Frame:	215JM	Mounting:	F1	Poles:	02	Created Date:	08-27-2010
Base:	RG	Rotation:	R	Insulation:	F	Eff. Date:	10-01-2010
Leads:	9#14	Literature:		Elec. Diagram:		Replaced By:	

Nameplate NP1496L

CAT.NO.	JMWDM3713T						
SPEC.	37H883S632H1						
HP	15						
VOLTS	208-230/460						
AMP	38-34.6/17.3						
RPM	3480						
FRAME	215JM	HZ	60	PH	3		
SER.F.	1.15	CODE	H	DES	A	CLASS	F
NEMA-NOM-EFF	90.2	PF	90				
RATING	40C AMB-CONT						
CC	010A	USABLE AT 208V	38				
DE	6309	ODE	6206				
ENCL	TEFC	SN					

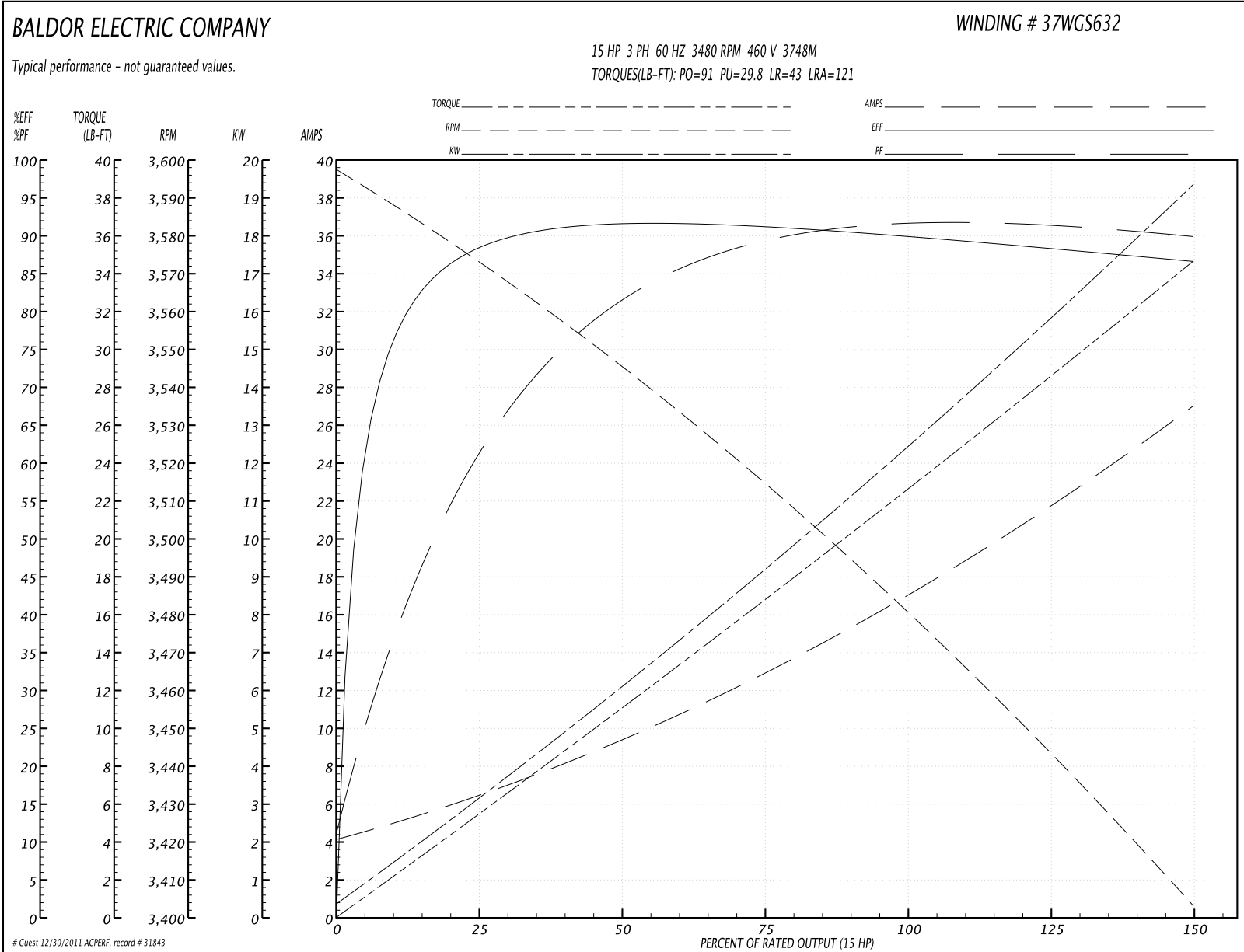
Parts List		
Part Number	Description	Quantity
SA202594	SA 37H883S632H1	1.000 EA
RA189872	RA 37H883S632H1	1.000 EA
37FN3002B01	EXFN, PLASTIC, 7.50 OD, 1.155 ID	1.000 EA
S/P101-000-000	EPACT PROCEDURES-FS PLANT-POLYREX EM, NO	1.000 EA
HW3200A01	3/8-16X3/4 I-BLT WELDED F/S	1.000 EA
37CB3005A04W	CASTING W/.75 NPT@6(MACH WHITE)	1.000 EA
37GS1015	GASKET, FOR 37 WD KOBX'S (SANTOPRENE)	1.000 EA
51XW2520A12	.25-20 X .75, TAPTITE II, HEX WSHR SLTD	2.000 EA
11XW1032G06	10-32 X .38, TAPTITE II, HEX WSHR SLTD U	1.000 EA
37EP3101A94MW	FRONT TEFC L&M 206 BRG W/O GRSR (WHITE)	1.000 EA
HW4032A01	BLUE DRAIN PLUG FOR WASH DOWN MOTORS	3.000 EA
HW5100A06	W2420-025 WVY WSHR (WB)	1.000 EA
37EP3401T08MW	FACE MT EP, ENCL, 213TC-215TC, W/WHITE E	1.000 EA
HW4032A01	BLUE DRAIN PLUG FOR WASH DOWN MOTORS	3.000 EA
10XN2520S36	1/4-20X 2 1/4 HEX HD SS	4.000 EA
XY3118S12	5/16-18 HEX NUT, STAINLESS STEEL	4.000 EA
07FH4011	WASHDOWN IEC FH W/AUTOPHORETIC PRIMER	1.000 EA
11XW1032S06	SCREW, HXWSHR HD SLDTYF 410 SS	3.000 EA
HW4600B53	SEAL 1.688 X 2.275 X 0.312 SINGLE LIP DB	1.000 EA
HA1005A02SP	SLINGER, OD 2.00, ID 1.14, 206 BRG,	1.000 EA
HW4600B67	FORSHEDA #V45A FACE SEAL	1.000 EA
37CB4512	CONDUIT BOX LID FOR WASHDOWN 37 FRAME	1.000 EA
37GS1008A02	37 GS FOR CB LID - WHITE NEOPRENE	1.000 EA
59XN0832S07	8/32 X 7/16 HX WS HD SER X	4.000 EA

Parts List (continued)		
Part Number	Description	Quantity
HW2502D13	SS KEY, 3/16 SQ X 1.375	1.000 EA
HA7000A01	KEY RETAINER 7/8" DIA SHAFT	1.000 EA
MJ5001A01	46-665 RED SEALER	0.001 QT
85XU0407S04	4X1/4 U DRIVE PIN STAINLESS	2.000 EA
LB1164	LABEL,WARNING AND DRAIN	1.000 EA
LB1115	LABEL,LIFTING DEVICE	1.000 EA
MJ1000A75	GREASE, POLYREX EM EXXON	0.050 LB
51XB1214A20	12-14X1.25 HXWSSLD SERTYB	1.000 EA
MG1025Z20	ACTIVATOR WILKOFAS 060.32	0.010 GA
MG1025W11	PAINT- 781-101 WILKOFAS WHITE EPOXY	0.028 GA
HA3104S18	THRUBOLT 5/16-18X14 SS	4.000 EA
LB1125C04	STD-E (STOCK CTN LABEL STD-E WITH FLAG)	1.000 EA
LC0005	CONN.DIA.,TY M,9-LD,DUAL VOLT,REVERSING	1.000 EA
NP1496L	WD, SS, UL CSA CC, W/O THERMAL, LASER	1.000 EA
37PA1052	PACKAGING GROUP, 150 LB MTR 2 X 4 RUNNER	1.000 EA

Performance Data at 460V, 60Hz, 15.0HP (Typical performance - Not guaranteed values)

General Characteristics							
Full Load Torque:	22.7 LB-FT			Start Configuration:	DOL		
No-Load Current:	4.37 Amps			Break-Down Torque:	91.0 LB-FT		
Line-line Res. @ 25°C.:	0.575 Ohms A Ph / 0.0 Ohms B Ph			Pull-Up Torque:	29.8 LB-FT		
Temp. Rise @ Rated Load:	81 C			Locked-Rotor Torque:	43.0 LB-FT		
Temp. Rise @ S.F. Load:	103 C			Starting Current:	121.0 Amps		
Load Characteristics							
% of Rated Load	25	50	75	100	125	150	S.F.
Power Factor:	67.0	83.0	88.0	90.0	91.0	90.0	91.0
Efficiency:	88.8	91.6	91.4	90.4	88.9	87.0	89.5
Speed:	3571.0	3543.0	3514.0	3481.0	3443.0	3402.0	3458.0
Line Amperes:	6.13	9.44	13.26	17.34	21.78	27.01	20.0

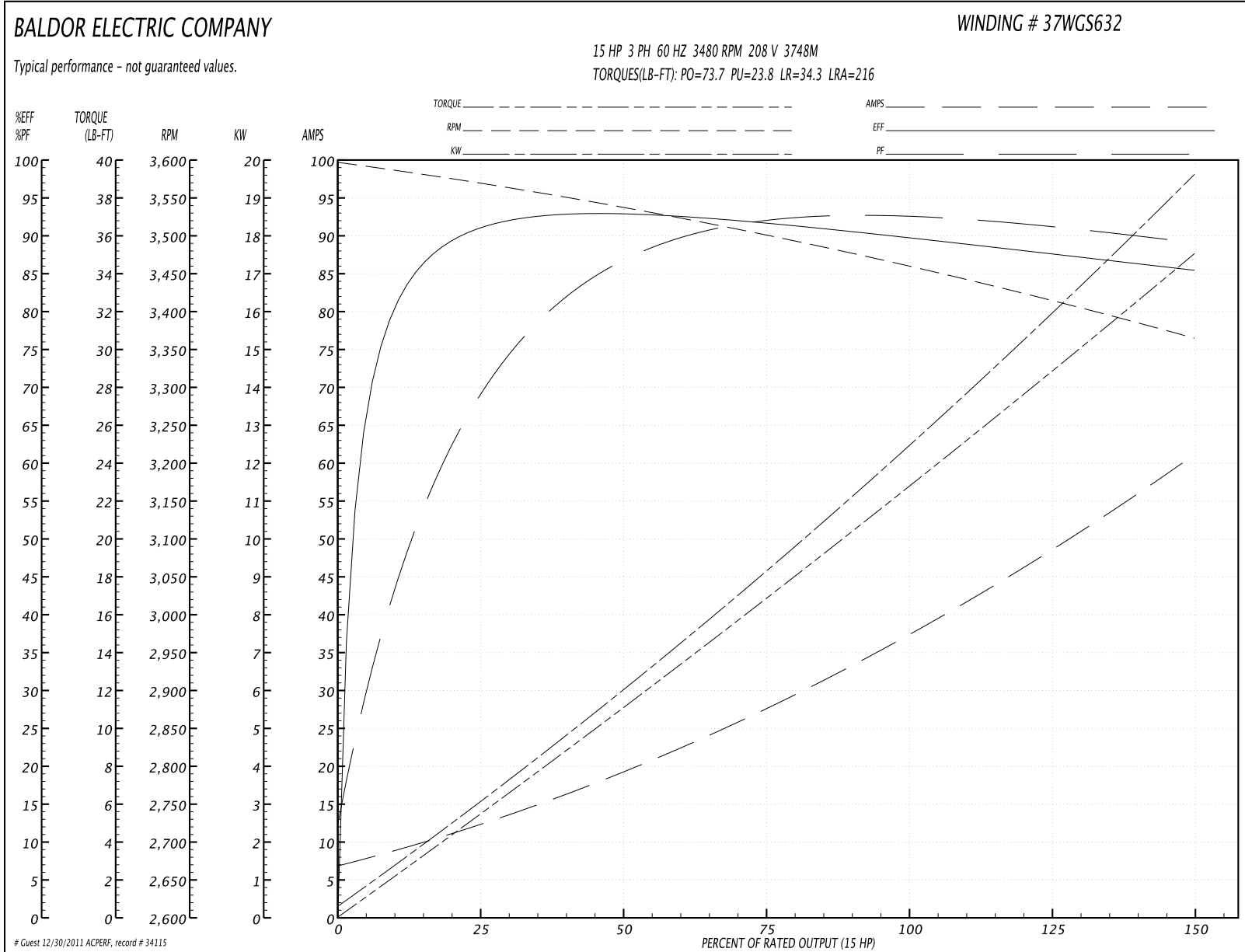
Performance Graph at 460V, 60Hz, 15.0HP Typical performance - Not guaranteed values

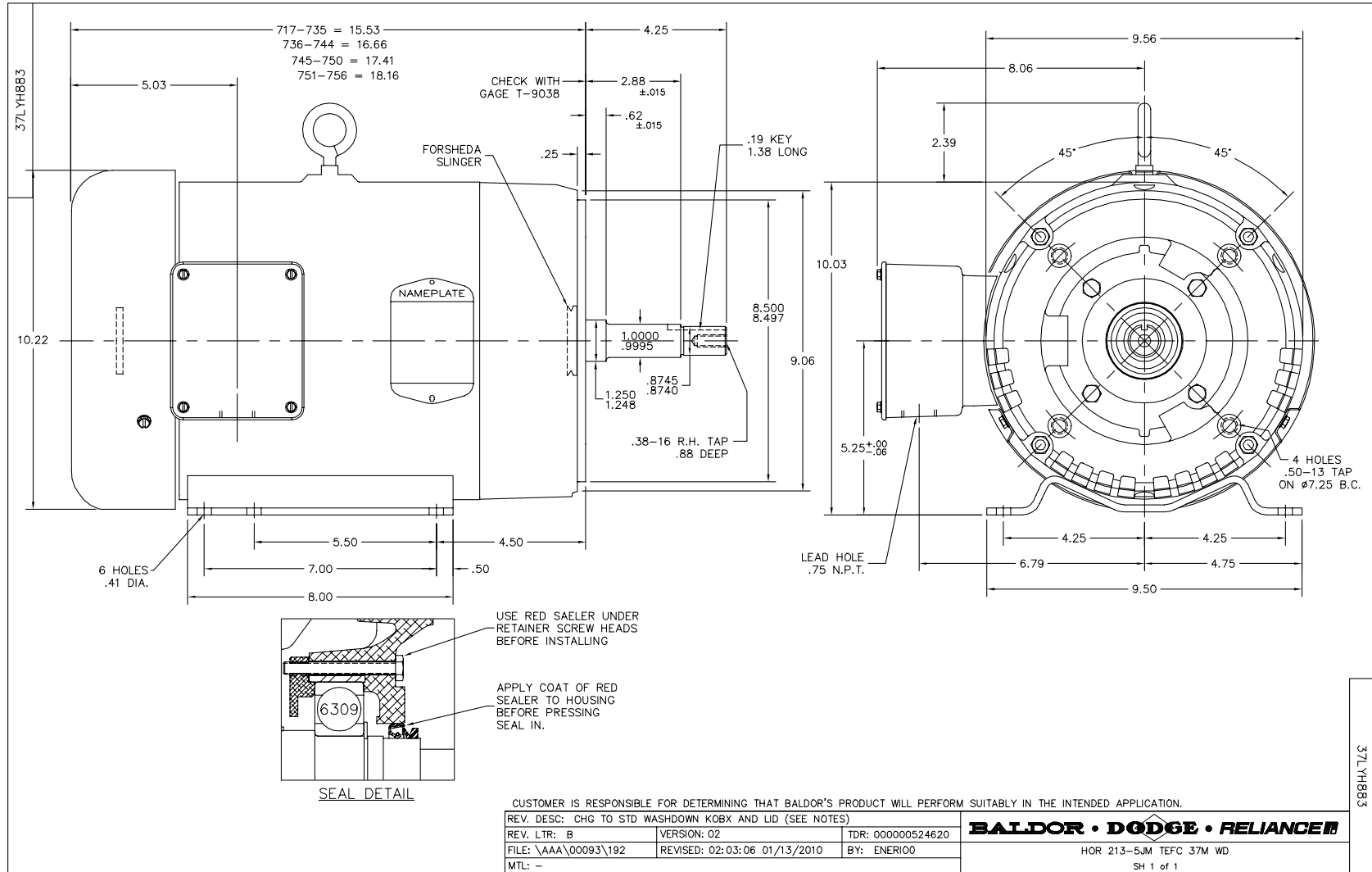


Performance Data at 208V, 60Hz, 15.0HP (Typical performance - Not guaranteed values)

General Characteristics							
Full Load Torque:	22.8 LB-FT			Start Configuration:	DOL		
No-Load Current:	7.3 Amps			Break-Down Torque:	73.7 LB-FT		
Line-line Res. @ 25°C.:	0.135 Ohms A Ph / 0.0 Ohms B Ph			Pull-Up Torque:	23.8 LB-FT		
Temp. Rise @ Rated Load:	89 C			Locked-Rotor Torque:	34.3 LB-FT		
Temp. Rise @ S.F. Load:	115 C			Starting Current:	216.0 Amps		
Load Characteristics							
% of Rated Load	25	50	75	100	125	150	S.F.
Power Factor:	76.0	88.0	91.0	92.0	92.0	89.0	92.0
Efficiency:	89.5	91.7	92.2	89.7	87.9	85.2	88.6
Speed:	3567.0	3534.0	3500.0	3461.0	3415.0	3363.0	3433.0
Line Amperes:	11.6	19.5	28.4	37.9	48.5	61.2	44.3

Performance Graph at 208V, 60Hz, 15.0HP Typical performance - Not guaranteed values





CD0005



LOW VOLTAGE
(2Y)



LINE

HIGH VOLTAGE
(1Y)



LINE

NOTES:

1. INTERCHANGE ANY TWO LINE LEADS TO REVERSE ROTATION.
2. OPTIONAL THERMOSTATS ARE PROVIDED WHEN SPECIFIED.
3. ACTUAL NUMBER OF INTERNAL PARALLEL CIRCUITS MAY BE A MULTIPLE OF THOSE SHOWN ABOVE.
4. LEAD COLORS ARE OPTIONAL. LEADS MUST ALWAYS BE NUMBERED AS SHOWN.

REV. DESC: REVISE TO SHOW OPTIONAL COLORS			
REV. LTR: E	BY: JLP	REVISED: 01/19/99 10:15	TDR: 0171435
90000		FILE: AAA00005140	MDL: -
		MTL: -	

BALDOR ELECTRIC Co.

3PH, DV, 9 LEADS

CD0005