

BALDOR® • RELIANCE

Product Information Packet

ELECTRIC MOTOR WHOLESAL.COM

L1204

.25HP, 1140RPM, 1PH, 60HZ, 48, 3421L, OPEN, F1

Part Detail							
Revision:	S	Status:	PRD/A	Change #:		Proprietary:	No
Type:	AC	Prod. Type:	3421L	Elec. Spec:	34WG5613	CD Diagram:	
Enclosure:	OPEN	Mfg Plant:		Mech. Spec:	34F001	Layout:	
Frame:	48	Mounting:	F1	Poles:	06	Created Date:	
Base:	RG	Rotation:	R	Insulation:	B	Eff. Date:	03-31-2011
Leads:	6#18	Literature:		Elec. Diagram:		Replaced By:	

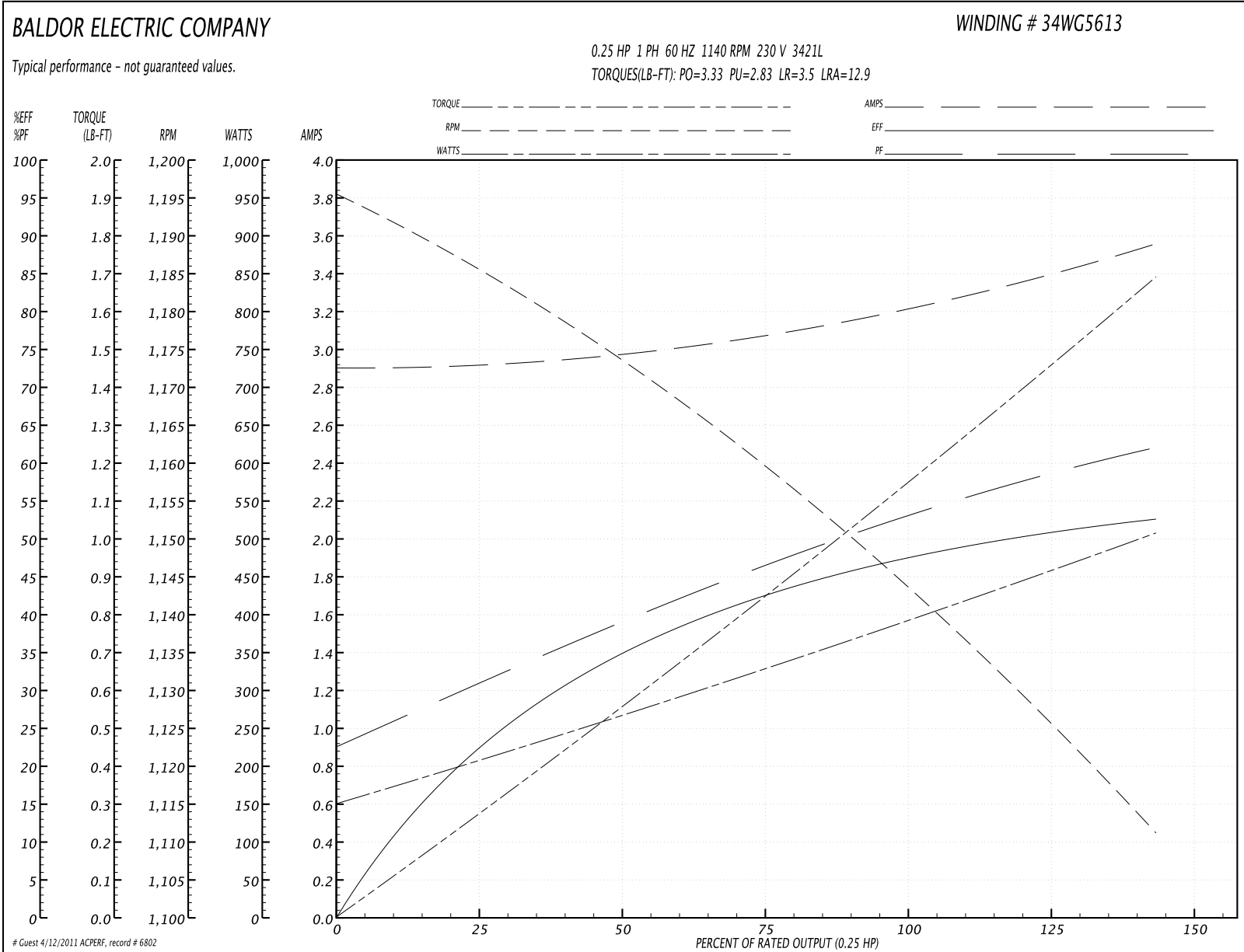
Nameplate NP1256L									
CAT.NO.	L1204								
SPEC.	34F01-5613								
HP	.25								
VOLTS	115/230								
AMP	6.4/3.2								
RPM	1140								
FRAME	48	HZ			60	PH	1		
SER.F.	1.35	CODE			N	DES	N	CLASS	B
NEMA-NOM-EFF	48	PF			53				
RATING	40C AMB-CONT								
CC				USABLE AT 208V		3.6			
DE	6203	ODE			6203				
ENCL	OPEN	SN							
	SFA 6.8/3.4								

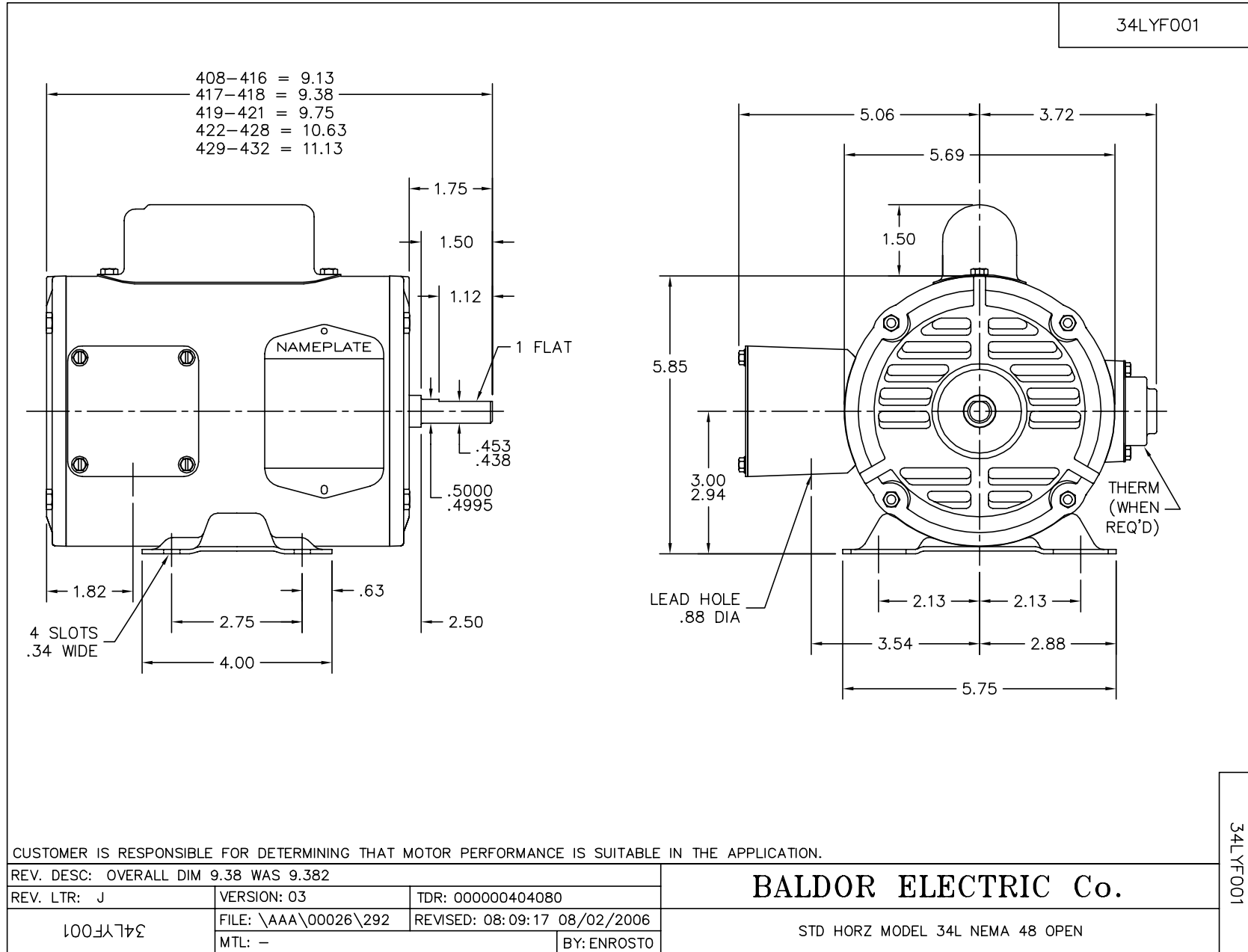
Parts List		
Part Number	Description	Quantity
SA007605	SA 34F01-5613	1.000 EA
RA003992	RA 34F01-5613	1.000 EA
NS2512A01	INSULATOR, CONDUIT BOX X	1.000 EA
34CB3002A	CB CAST W/.88 DIA HOLE	1.000 EA
51XB1016A07	10-16 X 7/16 HXWSSLD SERTYB	2.000 EA
11XW1032G06	10-32 X .38, TAPTITE II, HEX WSHR SLTD U	1.000 EA
51XW0832A07	8-32 X .44, TAPTITE II, HEX WSHR SLTD SE	2.000 EA
SP1006A01	TERM. BOARD, MODE 35 SW X H-23655	1.000 EA
34EP3210A01SP	FR ENDPLATE, MACH	1.000 EA
NS2500A01	INSULATOR, AUTO THER PROT	1.000 EA
WD1000A03	41531 AMP FLG.TERM,4M/REEL(2.5MIL)	1.000 EA
34CB4800SP	CAPACITOR COVER, STAMPED	1.000 EA
51XB1016A05	10-16X5/16HX WA SL SR TYB (F/S)	2.000 EA
HW5100A03SP	WAVY WASHER (W1543-017)	1.000 EA
34EP3212A02	PU ENDPLATE, MODEL 34 OPEN	1.000 EA
XY1032A02	10-32 HEX NUT DIRECTIONAL SERRATION	4.000 EA
34CB4517	CB LID 4 MTG HOLES .22 DIA STAMPED, FOR	1.000 EA
51XW0832A07	8-32 X .44, TAPTITE II, HEX WSHR SLTD SE	4.000 EA
MG1000G27	PAINT- S9282E CHARCOAL GREY	0.014 GA
10XF0440S02	04-40 X 1/8 TYPE F HEX HD STAINLESS STIC	2.000 EA
EC1189A02SP	61B2D120189NNBA ELEC CAP, 189-227MFD, 12	1.000 EA
SP5056A24	MODEL 34 TYPE L STATIONARY SWITCH WITH L	1.000 EA
HA3100A44	THRUBOLT 10-32 X 8.000	4.000 EA
LB1125C01	STD (STOCK) CARTON LABEL BALDOR WITH FLA	1.000 EA

Parts List (continued)		
Part Number	Description	Quantity
LC0001A01	CONN LABEL / WARNING LABEL (LC0001 / LB1	1.000 EA
NP1256L	ALUM, UL CSA CC, W/O THERMAL, LASER	1.000 EA
34PA1002	PACKING GROUP, BALDOR	1.000 EA

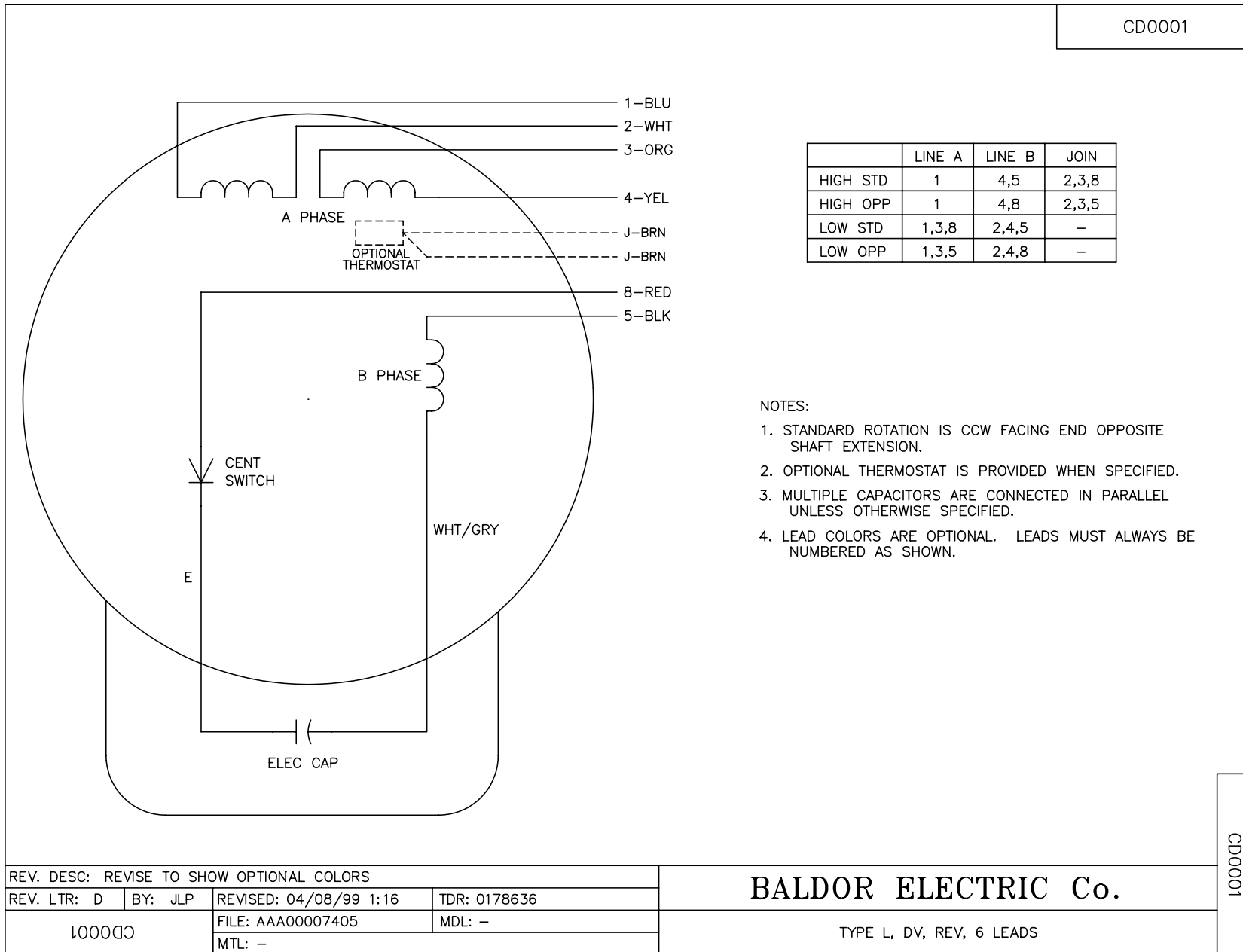
Performance Data at 230V, 60Hz, 0.25HP (Typical performance - Not guaranteed values)							
General Characteristics							
Full Load Torque:	1.13 LB-FT			Start Configuration:	DOL		
No-Load Current:	2.9 Amps			Break-Down Torque:	3.33 LB-FT		
Line-line Res. @ 25°C.:	8.08 Ohms A Ph / 6.68 Ohms B Ph			Pull-Up Torque:	2.83 LB-FT		
Temp. Rise @ Rated Load:	62 C			Locked-Rotor Torque:	3.5 LB-FT		
Temp. Rise @ S.F. Load:	74 C			Starting Current:	12.9 Amps		
Load Characteristics							
% of Rated Load	25	50	75	100	125	150	S.F.
Power Factor:	32.0	39.0	47.0	53.0	59.0	65.0	63.0
Efficiency:	21.0	35.0	43.0	48.0	51.0	52.0	51.5
Speed:	1188.0	1170.0	1160.0	1145.0	1130.0	1110.0	1120.0
Line Amperes:	2.9	3.0	3.1	3.2	3.3	3.6	3.4

Performance Graph at 230V, 60Hz, 0.25HP Typical performance - Not guaranteed values





CD0001



REV. DESC: REVISE TO SHOW OPTIONAL COLORS			
REV. LTR: D	BY: JLP	REVISED: 04/08/99 1:16	TDR: 0178636
100000		FILE: AAA00007405	MDL: -
		MTL: -	

BALDOR ELECTRIC Co.

TYPE L, DV, REV, 6 LEADS

CD0001