

# **BALDOR® • RELIANCE**

**Product Information Packet**

**ELECTRIC MOTOR WHOLESAL.COM**

**M2555TS-12**

**100HP,1775RPM,3PH,60HZ,404TS,4464M,OPSB**

Part Detail							
Revision:	L	Status:	INA/A	Change #:		Proprietary:	No
Type:	AC	Prod. Type:	4464M	Elec. Spec:	44WGW135	CD Diagram:	
Enclosure:	OPSB	Mfg Plant:		Mech. Spec:	44E059	Layout:	
Frame:	404TS	Mounting:	F1	Poles:	04	Created Date:	
Base:	RG	Rotation:	R	Insulation:	B	Eff. Date:	06-22-2010
Leads:	12#6	Literature:		Elec. Diagram:		Replaced By:	

Nameplate NP1256L									
CAT.NO.	M2555TS-12								
SPEC.	44E059W135H1								
HP	100								
VOLTS	230/460								
AMP	238/119								
RPM	1775								
FRAME	404TS	HZ	60	PH	3				
SER.F.	1.15	CODE	G	DES	B	CLASS	B		
NEMA-NOM-EFF	94.1	PF	84						
RATING	40C AMB-CONT								
CC	010A	USABLE AT 208V	275						
DE	6312	ODE	6312						
ENCL	OPSB	SN							

Parts List		
Part Number	Description	Quantity
SA113994	SA 44E059W135H1	1.000 EA
RA105150	RA 44E059W135H1	1.000 EA
S/P101-000-004	EPACT PROC-CL, 280FR & UP,LARGE BOX,POLY	1.000 EA
HA6731	LIFTING LUG FOR 44 FRAME MOTORS.	2.000 EA
HA6648A01	CAST ADAPTER, 44 FRAME - NEMA 404-5 - MA	1.000 EA
19XW3816A12	.38-16 X .75 HEX WASHER HEAD TAPTITE II	2.000 EA
HW1001A38	LOCKWASHER 3/8, ZINC PLT .688 OD, .382 I	2.000 EA
18CB1006A04	CB 318 3.62 LD HOLE, .38 MTG HOLE & 3.88	1.000 EA
19XW3118A16	.31-18 HEX WASHER HEAD TAPTITE II 1.00 L	4.000 EA
HW1001A31	LOCKWASHER 5/16, ZINC PLT.591 OD, .319 I	4.000 EA
WD1000B25	BURNDY TERMINAL L125HP	1.000 EA
10XN3118K08	5/16-18 X .50 GRADE #5, STL, ZINC PLATE	1.000 EA
HW1001A31	LOCKWASHER 5/16, ZINC PLT.591 OD, .319 I	1.000 EA
44EP1203A02	FREP, MACH	1.000 EA
HW5100A15	W4997-050 WVY WSHR (WB)	1.000 EA
10XN3118K44	5/16-18 X 2.75" HEX HD, GRADE 5	4.000 EA
HW1001A31	LOCKWASHER 5/16, ZINC PLT.591 OD, .319 I	4.000 EA
44EP1203A11	PU ENDPLATE, MACH	1.000 EA
XY5013A12	NUT,1/2-13,HEX,STEEL,ZINCPLATED	8.000 EA
18CB1506A01	CB LID 318 FOR 18CB1006	1.000 EA
10XN3118K16	5/16-18 X 1" GRADE #5, STL, ZINC PLATE	4.000 EA
HW1001A31	LOCKWASHER 5/16, ZINC PLT.591 OD, .319 I	4.000 EA
HW2501H24	KEY, 1/2 SQ X 2.750	1.000 EA
LB1115	LABEL,LIFTING DEVICE	1.000 EA

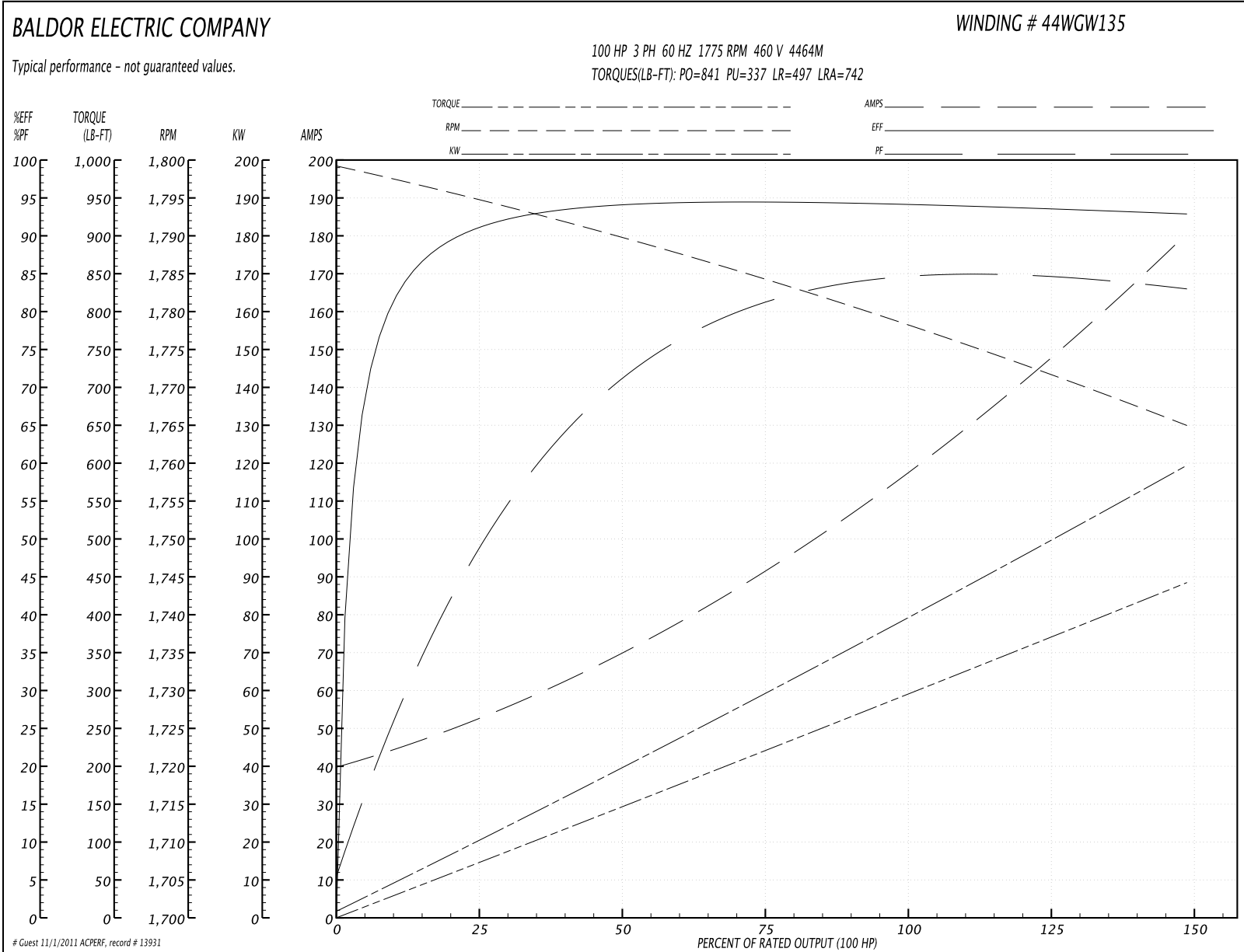
Parts List (continued)		
Part Number	Description	Quantity
HW4500A03	GREASE FITTING, .125 NPT 1610(ALEMITE) 8	1.000 EA
HW4500A20	1/8NPT SL PIPE PLUG	1.000 EA
MJ1000A75	GREASE, POLYREX EM EXXON	0.030 LB
HW4500A03	GREASE FITTING, .125 NPT 1610(ALEMITE) 8	1.000 EA
HW4500A20	1/8NPT SL PIPE PLUG	1.000 EA
HA3175A03	THRUBOLT STUD 1/2-13 X 24.250 - GRADE 2	4.000 EA
MG1000G27	PAINT- S9282E CHARCOAL GREY 55 GALLONS	0.080 GA
85XU0407A04	#4-7 X 1/4 DRIVE PIN	2.000 EA
44AD2001A01	BAFFLE 44 OPEN,"X"=1.00, SLOTTED BAND MT	1.000 EA
44AD2001A01	BAFFLE 44 OPEN,"X"=1.00, SLOTTED BAND MT	1.000 EA
LB5040	INSTRUCTION TAG, AC & DC	1.000 EA
LB1119	WARNING LABEL	1.000 EA
LB1125C04	STD-E (STOCK CTN LABEL STD-E WITH FLAG)	4.000 EA
LC0104A01	CONNECTION DIAGRAM	1.000 EA
NP1256L	ALUM, UL CSA CC, W/O THERMAL, LASER	1.000 EA
44PA1000	PK GP COMB PRINT 39-3/8X31X23-7/8	1.000 EA

Accessories		
Part Number	Description	Multiplier
44-1403A	C FACE KIT 44/404 USC TSC 6312 BRG	A8

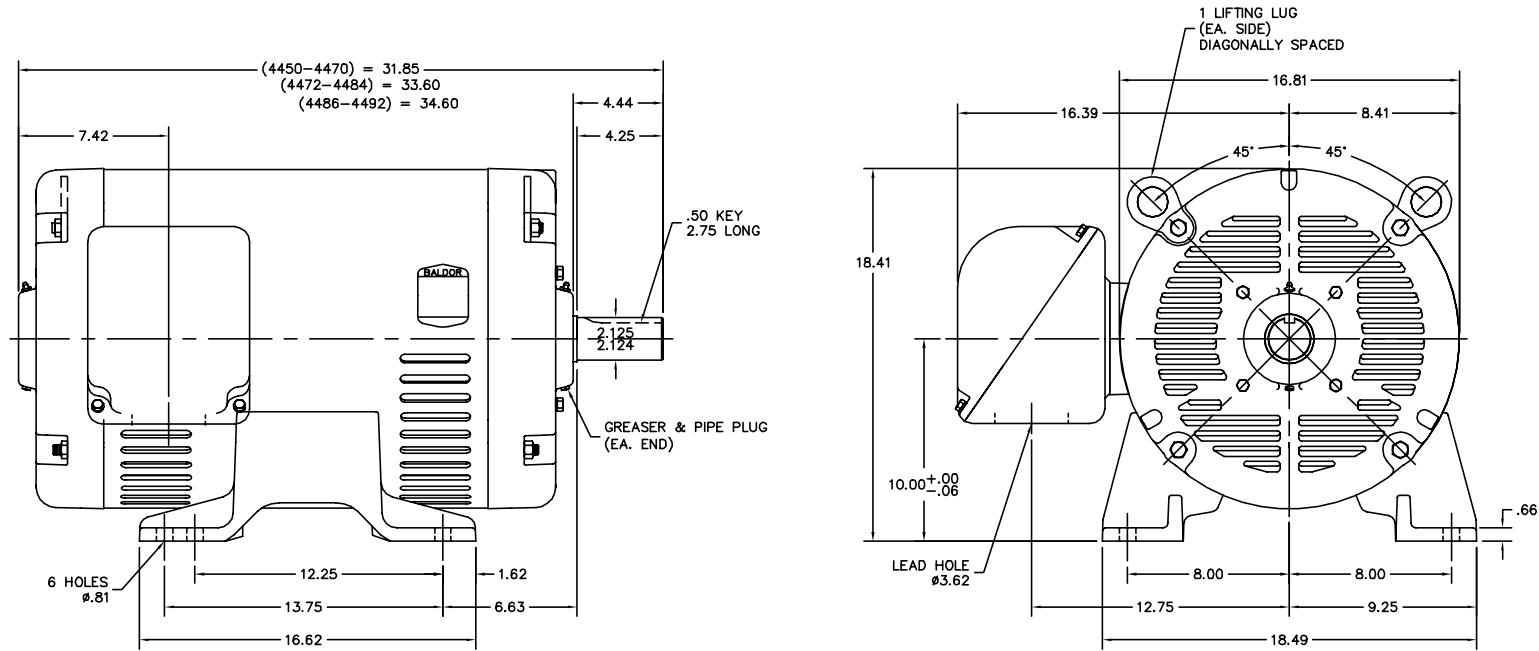
**Performance Data at 460V, 60Hz, 100.0HP (Typical performance - Not guaranteed values)**

General Characteristics							
Full Load Torque:	295.0 LB-FT			Start Configuration:	DOL		
No-Load Current:	41.4 Amps			Break-Down Torque:	841.0 LB-FT		
Line-line Res. @ 25°C.:	0.0555 Ohms A Ph / 0.0 Ohms B Ph			Pull-Up Torque:	337.0 LB-FT		
Temp. Rise @ Rated Load:	54 C			Locked-Rotor Torque:	497.0 LB-FT		
Temp. Rise @ S.F. Load:	72 C			Starting Current:	742.0 Amps		
Load Characteristics							
% of Rated Load	25	50	75	100	125	150	S.F.
Power Factor:	51.0	72.0	81.0	84.0	85.0	84.0	84.0
Efficiency:	90.8	94.0	94.4	94.2	93.7	92.8	93.9
Speed:	1795.0	1790.0	1784.0	1778.0	1772.0	1765.0	1774.0
Line Amperes:	50.4	69.4	92.2	118.6	147.6	179.7	136.0

Performance Graph at 460V, 60Hz, 100.0HP Typical performance - Not guaranteed values



44LYE059



CUSTOMER IS RESPONSIBLE FOR DETERMINING THAT MOTOR PERFORMANCE IS SUITABLE IN THE APPLICATION.

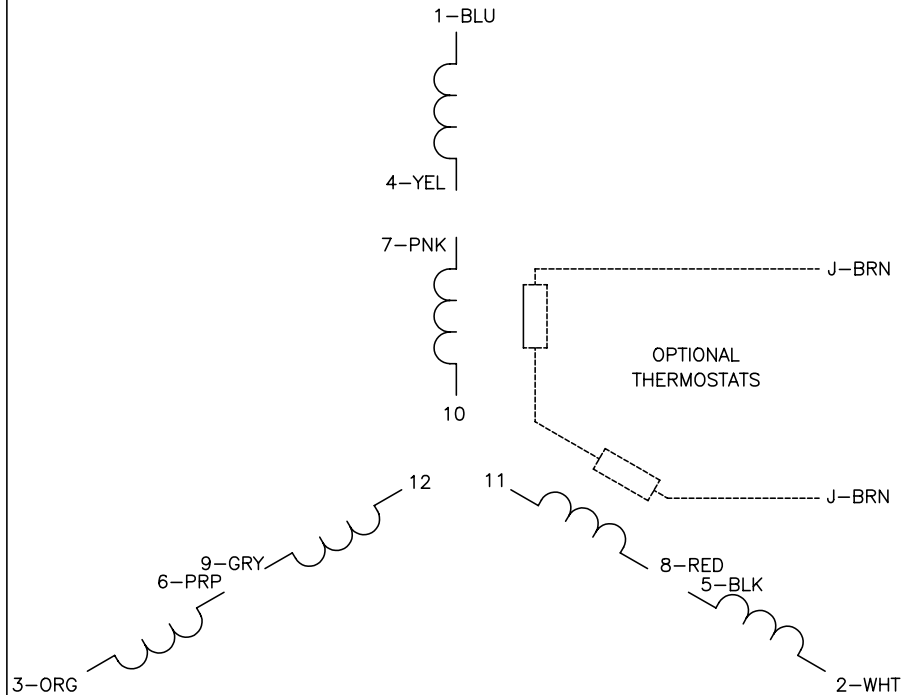
REV. DESC: ADDED "C" STACKS		
REV. LTR: A	VERSION: 01	TDR: 000000370652
FILE: \AAA\00076\502	REVISED: 08:57:02 08/10/2005	BY: ENERIO0
MTL: -		

**BALDOR ELECTRIC Co.**

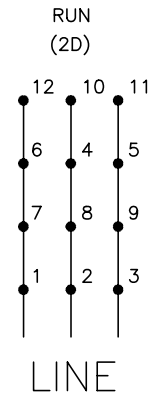
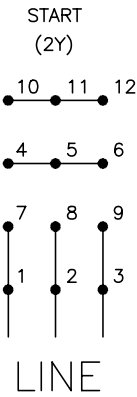
HORZ OPSB 404-5TS

44LYE059

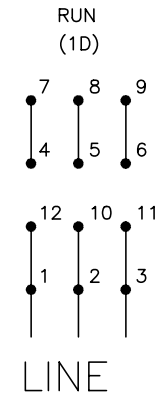
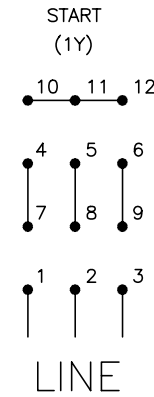
CD0104



**LOW VOLTAGE**



**HIGH VOLTAGE**



**NOTES:**

1. INTERCHANGE ANY TWO LINE LEADS TO REVERSE ROTATION.
2. OPTIONAL THERMOSTATS ARE PROVIDED WHEN SPECIFIED.
3. ACTUAL NUMBER OF INTERNAL PARALLEL CIRCUITS MAY BE A MULTIPLE OF THOSE SHOWN ABOVE.
4. LEAD COLORS ARE OPTIONAL. LEADS MUST ALWAYS BE NUMBERED AS SHOWN.

REV. DESC: REVISE TO SHOW OPTIONAL COLORS			
REV. LTR: C	BY: JLP	REVISED: 01/19/99 4:24	TDR: 0171435
CD0104		FILE: AAA00008377	MDL: -
		MTL: -	

**BALDOR ELECTRIC Co.**

3PH, DV, 12 LEADS, Y START/D RUN

CD0104