

# **BALDOR**® • **RELIANCE**

**Product Information Packet**

**ELECTRIC MOTOR WHOLESAL.COM**

**M3309T**

**5HP,1160RPM,3PH,60HZ,215T,3734M,OPSB,F1**

| Part Detail |      |             |       |                |          |               |            |
|-------------|------|-------------|-------|----------------|----------|---------------|------------|
| Revision:   | G    | Status:     | INA/A | Change #:      |          | Proprietary:  | No         |
| Type:       | AC   | Prod. Type: | 3734M | Elec. Spec:    | 37WGT974 | CD Diagram:   |            |
| Enclosure:  | OPSB | Mfg Plant:  |       | Mech. Spec:    | 37B101   | Layout:       |            |
| Frame:      | 215T | Mounting:   | F1    | Poles:         | 06       | Created Date: | 09-01-2005 |
| Base:       | RG   | Rotation:   | R     | Insulation:    | B        | Eff. Date:    | 08-24-2009 |
| Leads:      | 9#14 | Literature: |       | Elec. Diagram: |          | Replaced By:  |            |

| Nameplate NP1256L |               |                |  |  |      |     |   |       |   |
|-------------------|---------------|----------------|--|--|------|-----|---|-------|---|
| CAT.NO.           | M3309T        |                |  |  |      |     |   |       |   |
| SPEC.             | 37B101T974H1  |                |  |  |      |     |   |       |   |
| HP                | 5             |                |  |  |      |     |   |       |   |
| VOLTS             | 208-230/460   |                |  |  |      |     |   |       |   |
| AMP               | 16.5-15.2/7.6 |                |  |  |      |     |   |       |   |
| RPM               | 1160          |                |  |  |      |     |   |       |   |
| FRAME             | 215T          | HZ             |  |  | 60   | PH  | 3 |       |   |
| SER.F.            | 1.15          | CODE           |  |  | J    | DES | A | CLASS | B |
| NEMA-NOM-EFF      | 87.5          | PF             |  |  | 70   |     |   |       |   |
| RATING            | 40C AMB-CONT  |                |  |  |      |     |   |       |   |
| CC                | 010A          | USABLE AT 208V |  |  |      |     |   |       |   |
| DE                | 6307          | ODE            |  |  | 6206 |     |   |       |   |
| ENCL              | OPSB          | SN             |  |  |      |     |   |       |   |

| Parts List     |  |          |
|----------------|--|----------|
| Part Number    | Description                              | Quantity |
| SA132840       | SA 37B101T974H1                          | 1.000 EA |
| RA122746       | RA 37B101T974H1                          | 1.000 EA |
| S/P101-000-000 | EPACT PROCEDURES-FS PLANT-POLYREX EM, NO | 1.000 EA |
| HA6361A01      | LIFTING LUG FOR 37, 39 & 40 FRAME (AUTOP | 2.000 EA |
| 37CB3006       | 37 CB CASTING W/1.38 LEAD HOLE @ 6:00    | 1.000 EA |
| 51XW2520A10    | .25-20 X .62, TAPTITE II, HEX WSHR SLTD  | 2.000 EA |
| 11XW1032G06    | 10-32 X .38, TAPTITE II, HEX WSHR SLTD U | 1.000 EA |
| 37EP3200A01SP  | FR ENDPLATE, 37L&M, OPEN, MACH, W/GREASE | 1.000 EA |
| HW4500A01      | 1641B(ALEMITE)400 UNIV, GREASE FITT      | 1.000 EA |
| HW5100A06      | W2420-025 WVY WSHR (WB)                  | 1.000 EA |
| 37EP3201A01    | PU ENDPLATE, MACH 213-5T                 | 1.000 EA |
| HW4500A01      | 1641B(ALEMITE)400 UNIV, GREASE FITT      | 1.000 EA |
| XY3118A12      | 5/16-18 HEX NUT DIRECTIONAL SERRATION    | 4.000 EA |
| 37CB4516       | LIPPED LID FOR 37 FRAME NEC KOBX         | 1.000 EA |
| 51XW0832A07    | 8-32 X .44, TAPTITE II, HEX WSHR SLTD SE | 4.000 EA |
| HW2501F21      | KEY, 5/16 SQ X 2.375                     | 1.000 EA |
| HA7000A02      | KEY RETAINER RING, 1 1/8 DIA, 1 3/8 DIA  | 1.000 EA |
| 85XU0407S04    | 4X1/4 U DRIVE PIN STAINLESS              | 2.000 EA |
| LB1115         | LABEL,LIFTING DEVICE                     | 1.000 EA |
| MJ1000A75      | GREASE, POLYREX EM EXXON                 | 0.050 LB |
| MG1000G27      | PAINT- S9282E CHARCOAL GREY 55 GALLONS   | 0.028 GA |
| 37AD2001A01    | BAFFLE PLATE, STAMPED                    | 2.000 EA |
| HA3104A39      | THRUBOLT-5/16-18 X 12.250                | 4.000 EA |
| LB1125C04      | STD-E (STOCK CTN LABEL STD-E WITH FLAG)  | 1.000 EA |

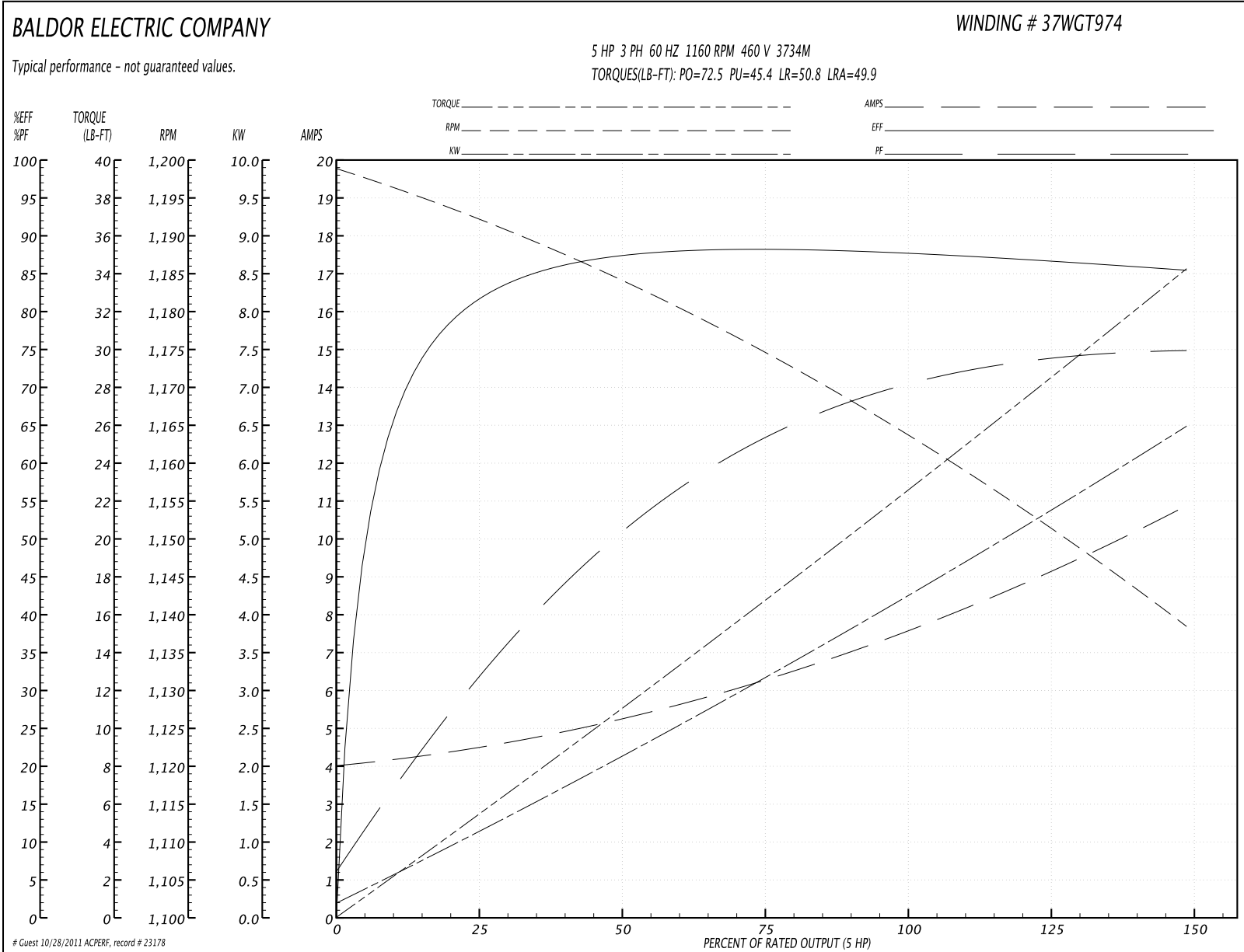
| Parts List (continued) |   |          |
|------------------------|---|----------|
| Part Number            | Description                             | Quantity |
| LC0005E01              | CONN.DIA./WARNING LABEL (LC0005/LB1119) | 1.000 EA |
| NP1256L                | ALUM, UL CSA CC, W/O THERMAL, LASER     | 1.000 EA |
| 36PA1001               | PACKAGING GROUP                         | 1.000 EA |

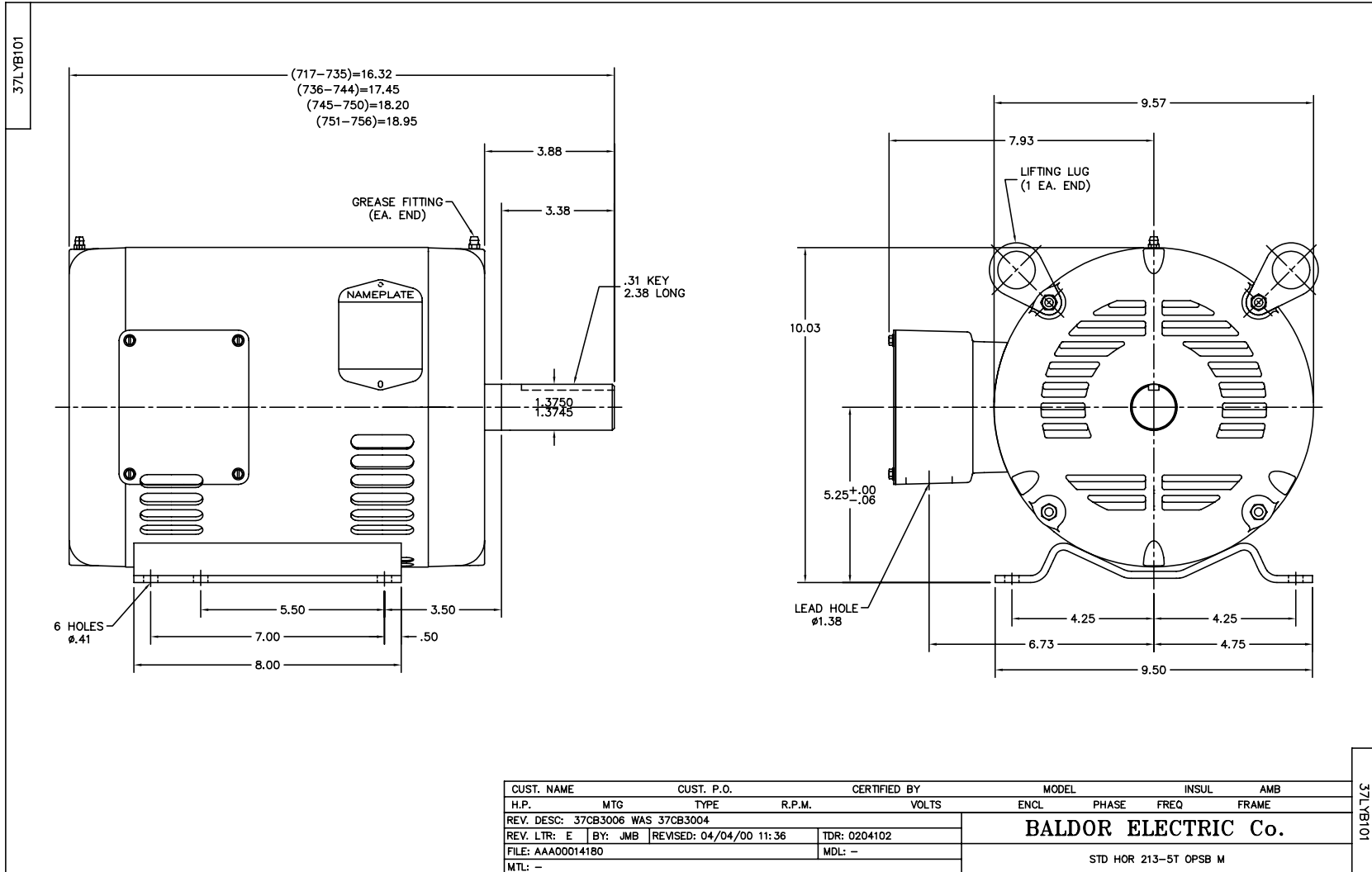
| Accessories |             |            |
|-------------|-------------|------------|
| Part Number | Description | Multiplier |
| 37-1404     | C FACE KIT  | A8         |

**Performance Data at 460V, 60Hz, 5.0HP (Typical performance - Not guaranteed values)**

| General Characteristics  |                                |        |        |                      |            |        |        |
|--------------------------|--------------------------------|--------|--------|----------------------|------------|--------|--------|
| Full Load Torque:        | 22.6 LB-FT                     |        |        | Start Configuration: | DOL        |        |        |
| No-Load Current:         | 4.11 Amps                      |        |        | Break-Down Torque:   | 72.5 LB-FT |        |        |
| Line-line Res. @ 25°C.:  | 1.94 Ohms A Ph / 0.0 Ohms B Ph |        |        | Pull-Up Torque:      | 45.4 LB-FT |        |        |
| Temp. Rise @ Rated Load: | 37 C                           |        |        | Locked-Rotor Torque: | 50.8 LB-FT |        |        |
| Temp. Rise @ S.F. Load:  | 47 C                           |        |        | Starting Current:    | 49.9 Amps  |        |        |
| Load Characteristics     |                                |        |        |                      |            |        |        |
| % of Rated Load          | 25                             | 50     | 75     | 100                  | 125        | 150    | S.F.   |
| Power Factor:            | 33.0                           | 52.0   | 63.0   | 70.0                 | 73.0       | 75.0   | 72.0   |
| Efficiency:              | 82.1                           | 87.7   | 88.7   | 88.3                 | 87.0       | 85.4   | 87.5   |
| Speed:                   | 1192.0                         | 1184.0 | 1174.0 | 1164.0               | 1152.0     | 1138.0 | 1157.0 |
| Line Amperes:            | 4.4                            | 5.18   | 6.32   | 7.65                 | 9.22       | 10.8   | 8.59   |

Performance Graph at 460V, 60Hz, 5.0HP Typical performance - Not guaranteed values





CD0005

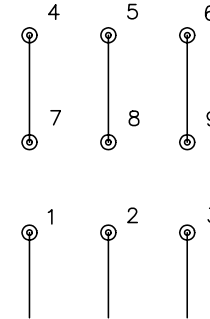


LOW VOLTAGE  
(2Y)



LINE

HIGH VOLTAGE  
(1Y)



LINE

NOTES:

1. INTERCHANGE ANY TWO LINE LEADS TO REVERSE ROTATION.
2. OPTIONAL THERMOSTATS ARE PROVIDED WHEN SPECIFIED.
3. ACTUAL NUMBER OF INTERNAL PARALLEL CIRCUITS MAY BE A MULTIPLE OF THOSE SHOWN ABOVE.
4. LEAD COLORS ARE OPTIONAL. LEADS MUST ALWAYS BE NUMBERED AS SHOWN.

REV. DESC: REVISE TO SHOW OPTIONAL COLORS

REV. LTR: E BY: JLP

REVISED: 01/19/99 10:15

TDR: 0171435

900000

FILE: AAA00005140

MDL: -

MTL: -

**BALDOR ELECTRIC Co.**

3PH, DV, 9 LEADS

CD0005