

# **BALDOR® • RELIANCE**

**Product Information Packet**

**ELECTRIC MOTOR WHOLESAL.COM**

**M3313T**

**10HP,1765RPM,3PH,60HZ,215T,3733M,OPSB,F1**

| Part Detail |      |             |       |                |          |               |            |
|-------------|------|-------------|-------|----------------|----------|---------------|------------|
| Revision:   | E    | Status:     | INA/A | Change #:      |          | Proprietary:  | No         |
| Type:       | AC   | Prod. Type: | 3733M | Elec. Spec:    | 37WGS131 | CD Diagram:   |            |
| Enclosure:  | OPSB | Mfg Plant:  |       | Mech. Spec:    | 37B101   | Layout:       |            |
| Frame:      | 215T | Mounting:   | F1    | Poles:         | 04       | Created Date: | 07-19-2006 |
| Base:       | RG   | Rotation:   | R     | Insulation:    | B        | Eff. Date:    | 08-24-2009 |
| Leads:      | 9#14 | Literature: |       | Elec. Diagram: |          | Replaced By:  |            |

**Nameplate NP1256L**

|              |              |                |      |     |   |       |   |
|--------------|--------------|----------------|------|-----|---|-------|---|
| CAT.NO.      | M3313T       |                |      |     |   |       |   |
| SPEC.        | 37B101S131H1 |                |      |     |   |       |   |
| HP           | 10           |                |      |     |   |       |   |
| VOLTS        | 208-230/460  |                |      |     |   |       |   |
| AMP          | 29-26.8/13.4 |                |      |     |   |       |   |
| RPM          | 1765         |                |      |     |   |       |   |
| FRAME        | 215T         | HZ             | 60   | PH  | 3 |       |   |
| SER.F.       | 1.15         | CODE           | J    | DES | A | CLASS | B |
| NEMA-NOM-EFF | 89.5         | PF             | 78   |     |   |       |   |
| RATING       | 40C AMB-CONT |                |      |     |   |       |   |
| CC           | 010A         | USABLE AT 208V |      |     |   |       |   |
| DE           | 6307         | ODE            | 6206 |     |   |       |   |
| ENCL         | OPSB         | SN             |      |     |   |       |   |
|              |              |                |      |     |   |       |   |

| Parts List     |  |          |
|----------------|--|----------|
| Part Number    | Description                              | Quantity |
| SA145281       | SA 37B101S131H1                          | 1.000 EA |
| RA134434       | RA 37B101S131H1                          | 1.000 EA |
| S/P101-000-000 | EPACT PROCEDURES-FS PLANT-POLYREX EM, NO | 1.000 EA |
| HA6361A01      | LIFTING LUG FOR 37, 39 & 40 FRAME (AUTOP | 2.000 EA |
| 37CB3006       | 37 CB CASTING W/1.38 LEAD HOLE @ 6:00    | 1.000 EA |
| 51XW2520A10    | .25-20 X .62, TAPTITE II, HEX WSHR SLTD  | 2.000 EA |
| 11XW1032G06    | 10-32 X .38, TAPTITE II, HEX WSHR SLTD U | 1.000 EA |
| 37EP3200A01SP  | FR ENDPLATE, 37L&M, OPEN, MACH, W/GREASE | 1.000 EA |
| HW4500A01      | 1641B(ALEMITE)400 UNIV, GREASE FITT      | 1.000 EA |
| HW5100A06      | W2420-025 WVY WSHR (WB)                  | 1.000 EA |
| 37EP3201A01    | PU ENDPLATE, MACH 213-5T                 | 1.000 EA |
| HW4500A01      | 1641B(ALEMITE)400 UNIV, GREASE FITT      | 1.000 EA |
| XY3118A12      | 5/16-18 HEX NUT DIRECTIONAL SERRATION    | 4.000 EA |
| 37CB4516       | LIPPED LID FOR 37 FRAME NEC KOBX         | 1.000 EA |
| 51XW0832A07    | 8-32 X .44, TAPTITE II, HEX WSHR SLTD SE | 4.000 EA |
| HW2501F21      | KEY, 5/16 SQ X 2.375                     | 1.000 EA |
| HA7000A02      | KEY RETAINER RING, 1 1/8 DIA, 1 3/8 DIA  | 1.000 EA |
| 85XU0407S04    | 4X1/4 U DRIVE PIN STAINLESS              | 2.000 EA |
| LB1115         | LABEL,LIFTING DEVICE                     | 1.000 EA |
| MJ1000A75      | GREASE, POLYREX EM EXXON                 | 0.050 LB |
| MG1000G27      | PAINT- S9282E CHARCOAL GREY 55 GALLONS   | 0.028 GA |
| 37AD2001A01    | BAFFLE PLATE, STAMPED                    | 2.000 EA |
| HA3104A39      | THRUBOLT-5/16-18 X 12.250                | 4.000 EA |
| LB1125C04      | STD-E (STOCK CTN LABEL STD-E WITH FLAG)  | 1.000 EA |

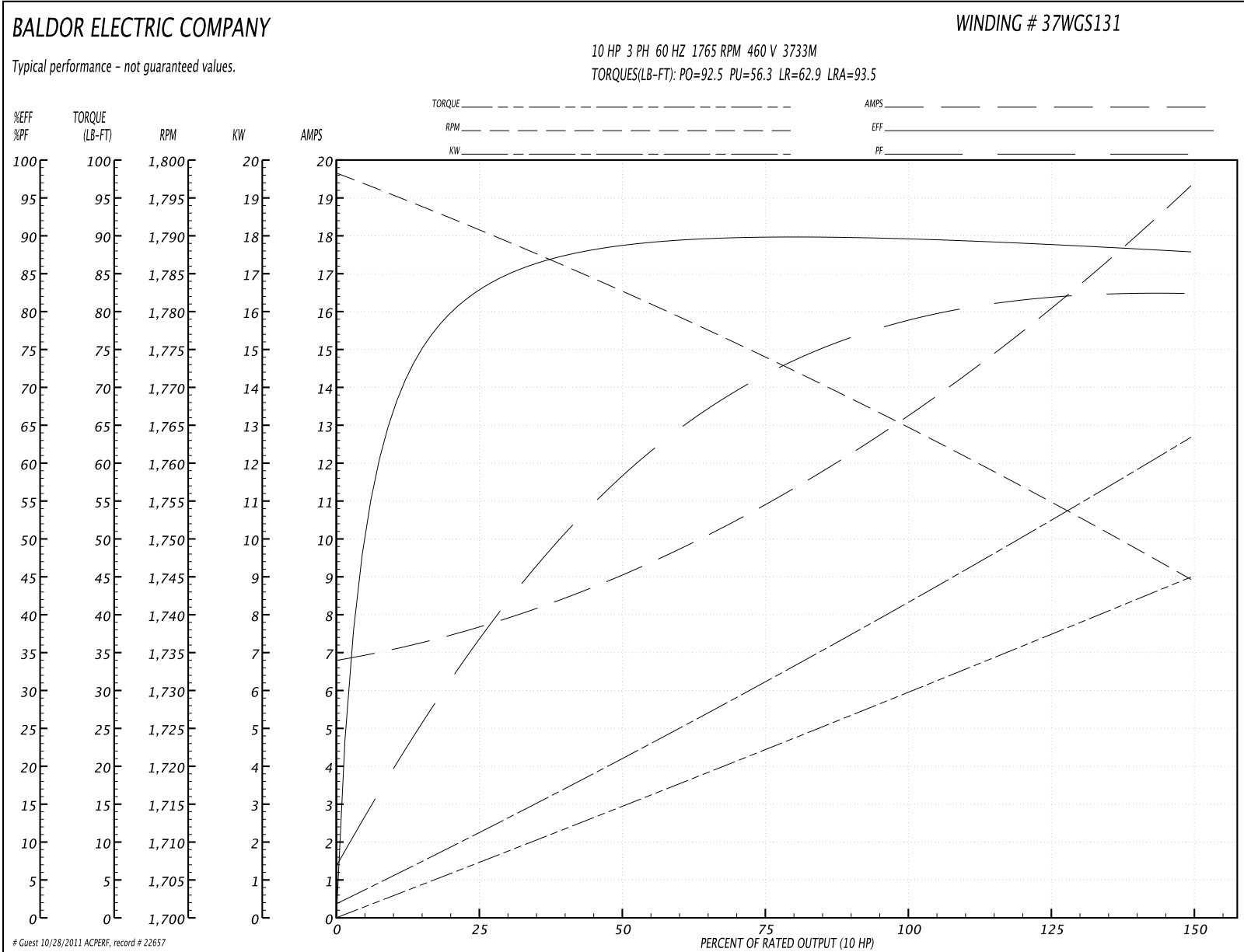
| <b>Parts List (continued)</b> |   |                 |
|-------------------------------|---|-----------------|
| <b>Part Number</b>            | <b>Description</b>                      | <b>Quantity</b> |
| LC0005E01                     | CONN.DIA./WARNING LABEL (LC0005/LB1119) | 1.000 EA        |
| NP1256L                       | ALUM, UL CSA CC, W/O THERMAL, LASER     | 1.000 EA        |
| 36PA1001                      | PACKAGING GROUP                         | 1.000 EA        |

| <b>Accessories</b> |                    |                   |
|--------------------|--------------------|-------------------|
| <b>Part Number</b> | <b>Description</b> | <b>Multiplier</b> |
| 37-1404            | C FACE KIT         | A8                |

**Performance Data at 460V, 60Hz, 10.0HP (Typical performance - Not guaranteed values)**

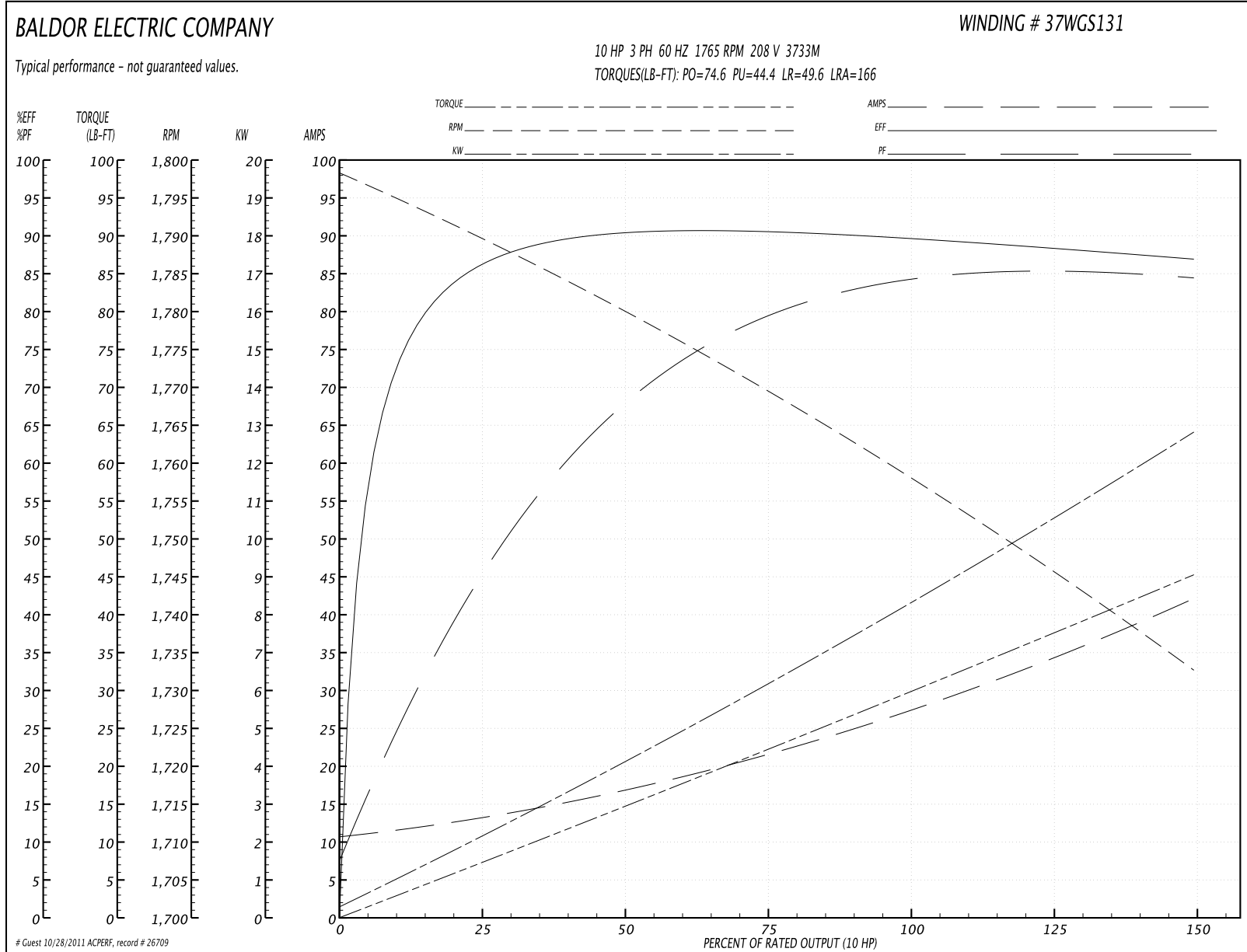
| General Characteristics  |                                |        |        |                      |            |        |        |
|--------------------------|--------------------------------|--------|--------|----------------------|------------|--------|--------|
| Full Load Torque:        | 29.7 LB-FT                     |        |        | Start Configuration: | DOL        |        |        |
| No-Load Current:         | 6.97 Amps                      |        |        | Break-Down Torque:   | 92.5 LB-FT |        |        |
| Line-line Res. @ 25°C.:  | 1.15 Ohms A Ph / 0.0 Ohms B Ph |        |        | Pull-Up Torque:      | 56.3 LB-FT |        |        |
| Temp. Rise @ Rated Load: | 47 C                           |        |        | Locked-Rotor Torque: | 62.9 LB-FT |        |        |
| Temp. Rise @ S.F. Load:  | 59 C                           |        |        | Starting Current:    | 93.5 Amps  |        |        |
| Load Characteristics     |                                |        |        |                      |            |        |        |
| % of Rated Load          | 25                             | 50     | 75     | 100                  | 125        | 150    | S.F.   |
| Power Factor:            | 37.0                           | 59.0   | 71.0   | 78.0                 | 81.0       | 83.0   | 80.0   |
| Efficiency:              | 82.2                           | 88.5   | 89.9   | 89.8                 | 89.1       | 87.9   | 89.4   |
| Speed:                   | 1790.0                         | 1783.0 | 1774.0 | 1765.0               | 1756.0     | 1744.0 | 1760.0 |
| Line Amperes:            | 7.43                           | 8.87   | 10.9   | 13.4                 | 16.1       | 19.2   | 15.0   |

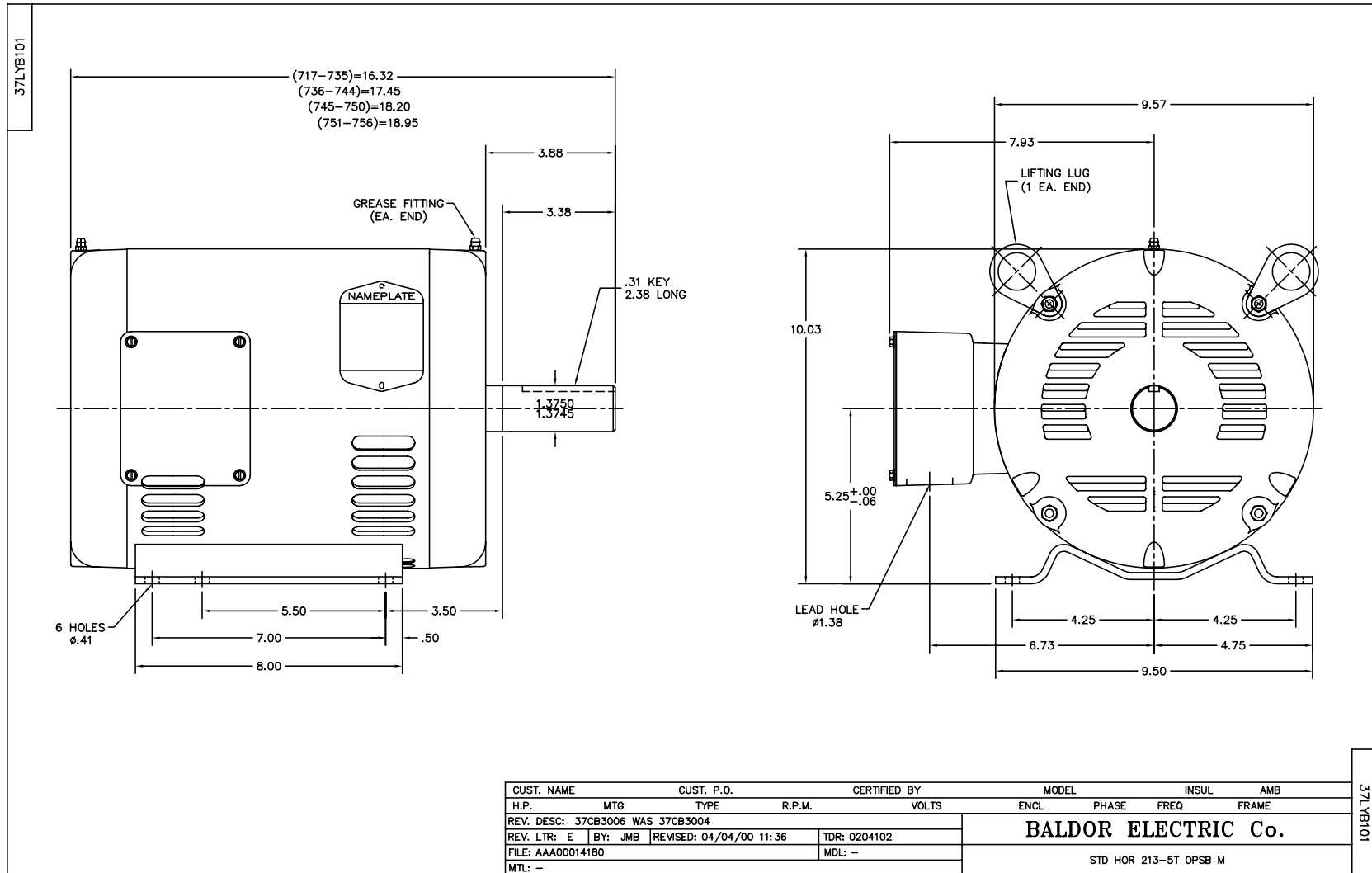
Performance Graph at 460V, 60Hz, 10.0HP Typical performance - Not guaranteed values



| Performance Data at 208V, 60Hz, 10.0HP (Typical performance - Not guaranteed values) |                                 |        |        |                      |            |        |        |
|--|---------------------------------|--------|--------|----------------------|------------|--------|--------|
| General Characteristics  |                                 |        |        |                      |            |        |        |
| Full Load Torque:  | 29.8 LB-FT                      |        |        | Start Configuration: | DOL        |        |        |
| No-Load Current:   | 11.1 Amps                       |        |        | Break-Down Torque:   | 74.6 LB-FT |        |        |
| Line-line Res. @ 25°C.:  | 0.288 Ohms A Ph / 0.0 Ohms B Ph |        |        | Pull-Up Torque:      | 44.4 LB-FT |        |        |
| Temp. Rise @ Rated Load:   | 46 C                            |        |        | Locked-Rotor Torque: | 49.6 LB-FT |        |        |
| Temp. Rise @ S.F. Load:  | 58 C                            |        |        | Starting Current:    | 166.0 Amps |        |        |
| Load Characteristics   |                                 |        |        |                      |            |        |        |
| % of Rated Load  | 25                              | 50     | 75     | 100                  | 125        | 150    | S.F.   |
| Power Factor:  | 46.0                            | 69.0   | 79.0   | 83.0                 | 85.0       | 85.0   | 84.0   |
| Efficiency:  | 85.4                            | 90.4   | 90.4   | 89.7                 | 88.5       | 86.8   | 89.0   |
| Speed:   | 1789.0                          | 1780.0 | 1770.0 | 1758.0               | 1747.0     | 1732.0 | 1751.0 |
| Line Amperes:  | 12.6                            | 16.5   | 21.6   | 27.7                 | 34.3       | 41.9   | 31.7   |

Performance Graph at 208V, 60Hz, 10.0HP Typical performance - Not guaranteed values

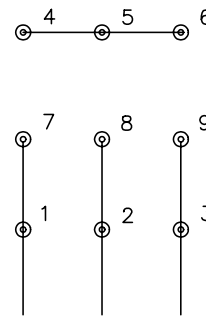




CD0005

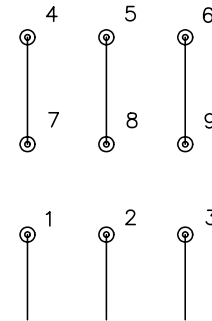


LOW VOLTAGE  
(2Y)



LINE

HIGH VOLTAGE  
(1Y)



LINE

NOTES:

1. INTERCHANGE ANY TWO LINE LEADS TO REVERSE ROTATION.
2. OPTIONAL THERMOSTATS ARE PROVIDED WHEN SPECIFIED.
3. ACTUAL NUMBER OF INTERNAL PARALLEL CIRCUITS MAY BE A MULTIPLE OF THOSE SHOWN ABOVE.
4. LEAD COLORS ARE OPTIONAL. LEADS MUST ALWAYS BE NUMBERED AS SHOWN.

REV. DESC: REVISE TO SHOW OPTIONAL COLORS

REV. LTR: E BY: JLP

REVISED: 01/19/99 10:15

TDR: 0171435

9000D

FILE: AAA00005140

MDL: -

MTL: -

**BALDOR ELECTRIC Co.**

3PH, DV, 9 LEADS

CD0005