

BALDOR® • RELIANCE

Product Information Packet

M3314T

15HP,3450RPM,3PH,60HZ,215T,3735M,OPSB,F1

Product Detail							
Revision:	Q	Status:	PRD/A	Change #:		Proprietary:	No
Type:	AC	Prod Type:	3735M	Elec. Spec:	37WGY510	CD Diagram:	CD0005
Enclosure	OPSB	Mfg Plant:		Mech Spec:	37B101	Layout:	37LYB101
Frame:	215T	Mounting:	F1	Poles:	02	Created Date:	
Base:	RG	Rotation:	R	Insulation:	B	Eff. Date:	12-03-2007
Leads:	9#14					Replaced By:	
Nameplate NP1256L							
CAT.NO.	M3314T						
SPEC.	37B101Y510H1						
HP	15						
VOLTS	208-230/460						
AMP	37-35/17.5						
RPM	3450						
FRAME	215T	HZ	60	PH	3		
SER.F.	1.15	CODE	H	DES	B	CLASS	B
NEMA-NOM-EFF	89.5	PF	90				
RATING	40C AMB-CONT						
CC	010A	USABLE AT 208V	37				
DE	6307	ODE	6206				
ENCL	OPSB	SN					

Parts List			
Product ID	Description	Quantity	List Price
SA030465	SA 37B101Y510H1	1.000	722.00
RA026506	RA 37B101Y510H1	1.000	602.00
S/P101-000-000	EPACT PROCEDURES-FS PLANT-POLYREX EM, NO	1.000	
HA6361A01	LIFTING LUG FOR 37, 39 & 40 FRAME (AUTOP	2.000	2.00
37CB3006	37 CB CASTING W/1.38 LEAD HOLE @ 6:00	1.000	14.00
51XW2520A10	.25-20 X .62, TAPTITE II, HEX WSHR SLTD	2.000	2.00
11XW1032G06	10-32 X .38, TAPTITE II, HEX WSHR SLTD U	1.000	2.00
37EP3200A01SP	FR ENDPLATE, 37L&M, OPEN, MACH, W/GREASE	1.000	88.00
HW4500A01	1641B(ALEMITE)400 UNIV, GREASE FITT	1.000	2.00
HW5100A06	W2420-025 WVY WSHR (WB)	1.000	2.00
37EP3201A01	PU ENDPLATE, MACH	1.000	70.00
HW4500A01	1641B(ALEMITE)400 UNIV, GREASE FITT	1.000	2.00
XY3118A12	5/16-18 HEX NUT DIRECTIONAL SERRATION	4.000	2.00
37CB4516	CONDUIT BOX LID FOR OPEN AND GP 37 FRAME	1.000	2.00
51XW0832A07	8-32 X .44, TAPTITE II, HEX WSHR SLTD SE	4.000	2.00
HW2501F21	KEY, 5/16 SQ X 2.375	1.000	4.00
HA7000A02	KEY RETAINER RING, 1 1/8 DIA, 1 3/8 DIA	1.000	2.00
10XF0440S02	04-40 X 1/8 TYPE F HEX HD STAINLESS STIC	2.000	2.00
LB1115	LABEL,LIFTING DEVICE (ON ROLLS0	1.000	2.00
MJ1000A02	GREASE, POLYREX EM EXXON	0.050	10.00
MG1000G27	PAINT- S9282E CHARCOAL GREY	0.028	4,000.00
37AD2001A01	BAFFLE PLATE, STAMPED	2.000	39.00
HA3104A39	THRUBOLT-5/16-18 X 12.250	4.000	4.00
LB1125C04	STD-E (STOCK CTN LABEL STD-E WITH FLAG)	1.000	2.00

Parts List (continued)			
Product ID	Description	Quantity	List Price
LC0005E01	CONN.DIA./WARNING LABEL (LC0005/LB1119)	1.000	2.00
NP1256L	NP STD LASER ENGRAVED, UL CSA CC, W/O TH	1.000	3.00
36PA1001	PACKAGING GROUP	1.000	25.00

Performance Data at 460V, 60Hz, 15.0HP (Typical performance - Not guaranteed values)
General Characteristics

Full Load Torque:	22.6 LB-FT	Start Configuration:	DOL
No-Load Current:	4.9 Amps	Break-Down Torque:	82.0 LB-FT
Line-line Res. @ 25°C.:	0.755 Ohms A Ph / 0.0 Ohms B Ph	Pull-Up Torque:	32.0 LB-FT
Temp. Rise @ Rated Load:	64°C	Locked-Rotor Torque:	48.0 LB-FT
Temp. Rise @ S.F. Load:	79°C	Starting Current:	124.0 Amps

Load Characteristics

% of Rated Load:	25	50	75	100	125	150	S.F.
Power Factor:	64.0	83.0	89.0	91.0	92.0	92.0	92.0
Efficiency:	85.7	89.8	90.2	89.6	88.5	87.0	88.9
Speed:	3572.0	3544.0	3514.0	3482.0	3447.0	3408.0	3461.0
Line Amperes:	6.4	9.5	13.1	17.2	21.6	26.3	19.8

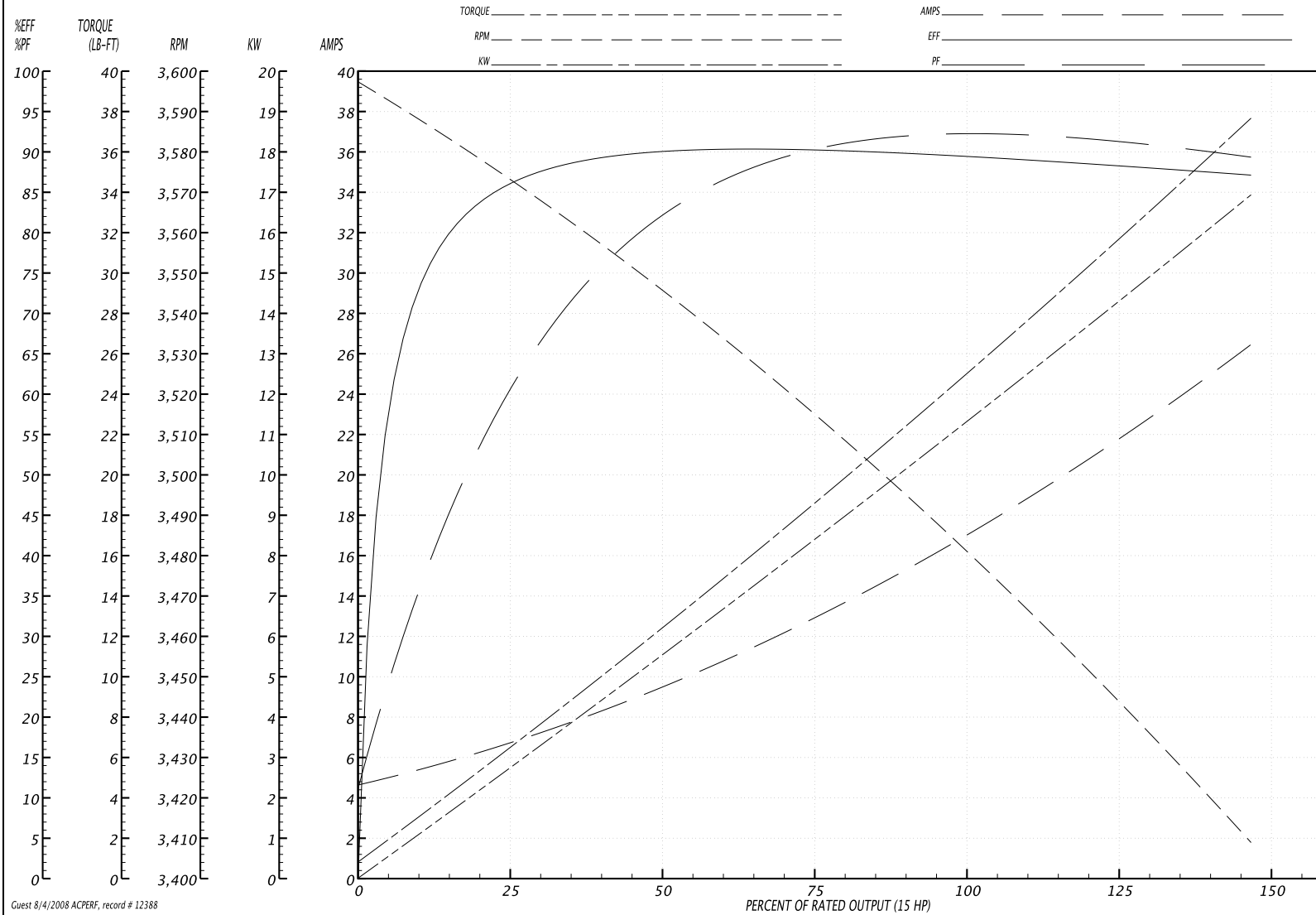
Performance Graph at 460V, 60Hz, 15.0HP (Typical performance - Not guaranteed values)

BALDOR ELECTRIC COMPANY

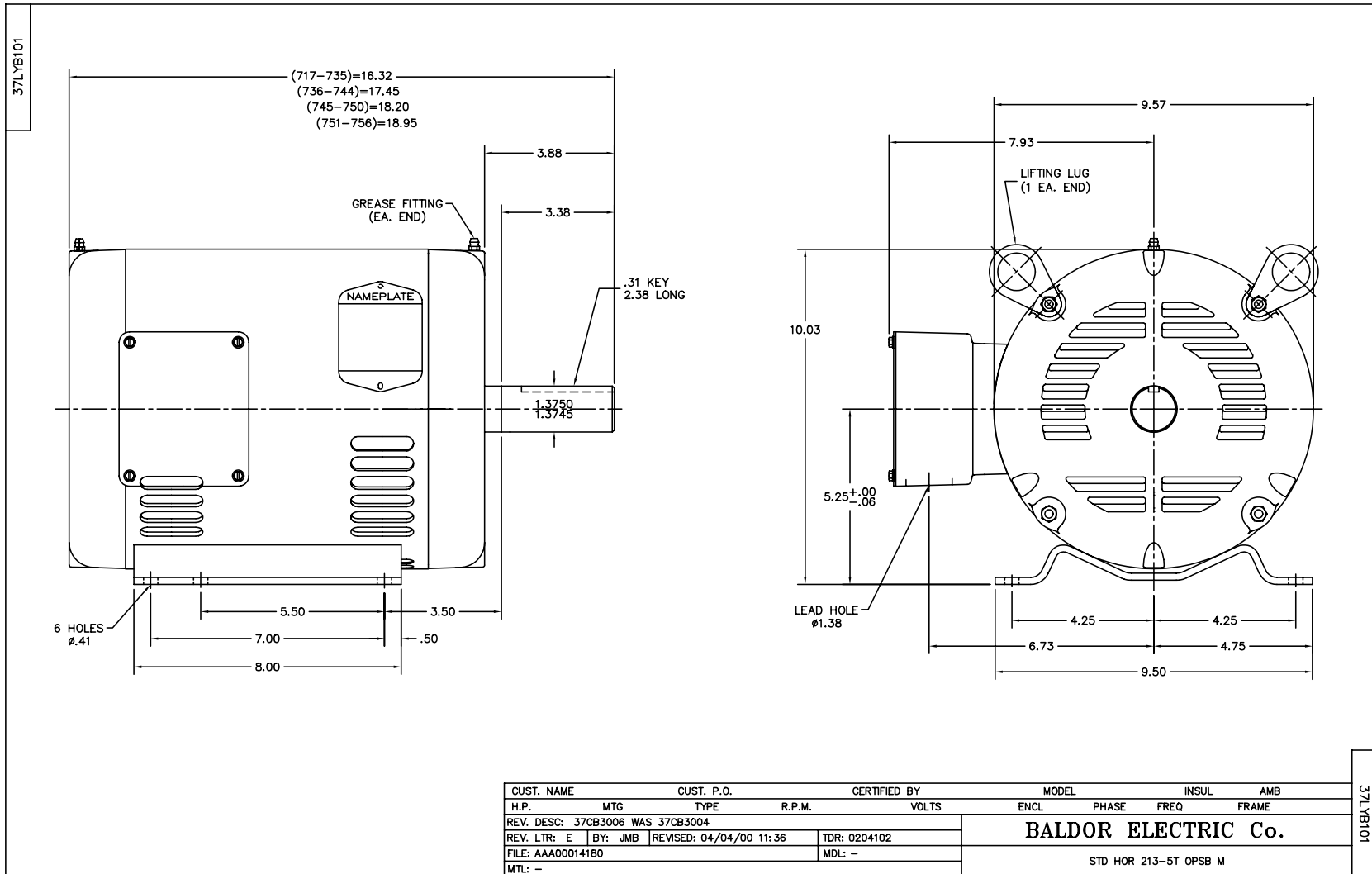
WINDING # 37WGY510

Typical performance - not guaranteed values.

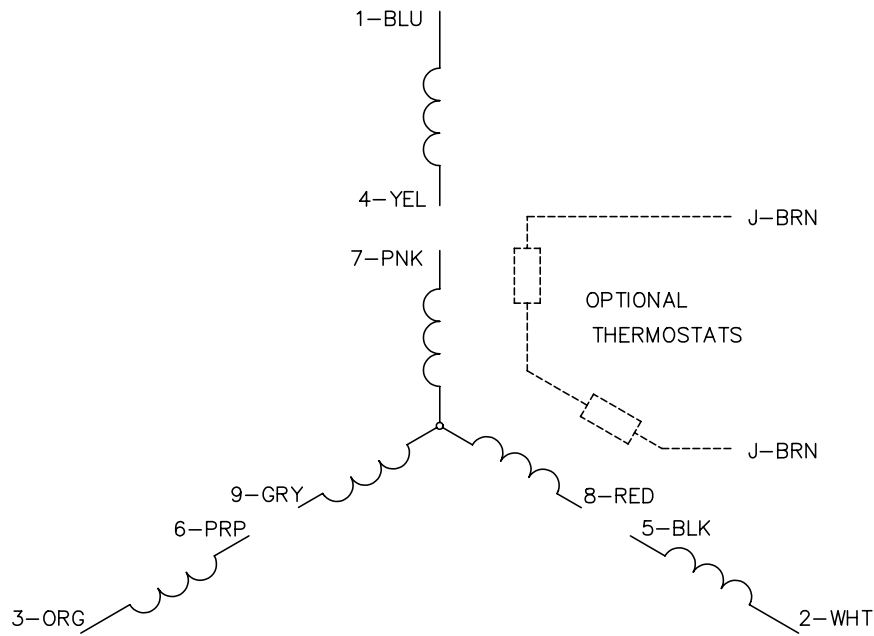
15 HP 3 PH 60 HZ 3450 RPM 460 V 3735M
 TORQUES(LB-FT): PO=82 PU=32 LR=48 LRA=124



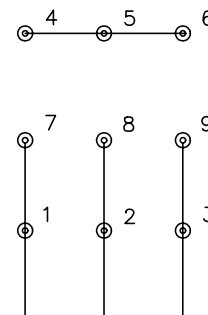
Guest 8/4/2008 ACPERF, record # 12388



CD0005

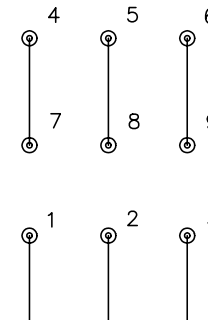


LOW VOLTAGE
(2Y)



LINE

HIGH VOLTAGE
(1Y)



LINE

NOTES:

1. INTERCHANGE ANY TWO LINE LEADS TO REVERSE ROTATION.
2. OPTIONAL THERMOSTATS ARE PROVIDED WHEN SPECIFIED.
3. ACTUAL NUMBER OF INTERNAL PARALLEL CIRCUITS MAY BE A MULTIPLE OF THOSE SHOWN ABOVE.
4. LEAD COLORS ARE OPTIONAL. LEADS MUST ALWAYS BE NUMBERED AS SHOWN.

REV. DESC: REVISE TO SHOW OPTIONAL COLORS			
REV. LTR: E	BY: JLP	REVISED: 01/19/99 10:15	TDR: 0171435
90000		FILE: AAA00005140	MDL: -
		MTL: -	

BALDOR ELECTRIC Co.

3PH, DV, 9 LEADS

CD0005