

BALDOR® • RELIANCE

Product Information Packet

ELECTRIC MOTOR WHOLESAL.COM

M3583T

1.5HP,3450RPM,3PH,60HZ,143T,0520M,TEFC

| Part Detail | | | | | | | | | |
|-------------------|--------------|----------------|-------|----------------|----------|---------------|------------|-------|---|
| Revision: | U | Status: | INA/A | Change #: | | Proprietary: | No | | |
| Type: | AC | Prod. Type: | 0520M | Elec. Spec: | 05WGW505 | CD Diagram: | | | |
| Enclosure: | TEFC | Mfg Plant: | | Mech. Spec: | 05C001 | Layout: | | | |
| Frame: | 143T | Mounting: | F1 | Poles: | 02 | Created Date: | 07-17-2008 | | |
| Base: | RG | Rotation: | R | Insulation: | F | Eff. Date: | 10-02-2009 | | |
| Leads: | 9#18 | Literature: | | Elec. Diagram: | | Replaced By: | | | |
| Nameplate NP1256L | | | | | | | | | |
| CAT.NO. | M3583T | | | | | | | | |
| SPEC. | 05C001W505H1 | | | | | | | | |
| HP | 1.5 | | | | | | | | |
| VOLTS | 208-230/460 | | | | | | | | |
| AMP | 4.3-4.2/2.1 | | | | | | | | |
| RPM | 3450 | | | | | | | | |
| FRAME | 143T | HZ | | | 60 | PH | 3 | | |
| SER.F. | 1.15 | CODE | | | L | DES | B | CLASS | F |
| NEMA-NOM-EFF | 82.5 | PF | | | 85 | | | | |
| RATING | 40C AMB-CONT | | | | | | | | |
| CC | 010A | USABLE AT 208V | | | 4.3 | | | | |
| DE | 6205 | ODE | | | 6203 | | | | |
| ENCL | TEFC | SN | | | | | | | |
| | | | | | | | | | |

| Parts List | | |
|----------------|--|----------|
| Part Number | Description | Quantity |
| SA019165 | SA 05C001W505H1 | 1.000 EA |
| RA015218 | RA 05C001W505H1 | 1.000 EA |
| S/P101-000-000 | EPACT PROCEDURES-FS PLANT-POLYREX EM, NO | 1.000 EA |
| 05SF1100A01 | STATOR FRAME, MACH | 1.000 EA |
| HW3021G06 | .188X 5/8 ROLLED SPR PIN | 1.000 EA |
| 06CB3000 | CONDUIT BOX CAST | 1.000 EA |
| 06GS1000 | GASKET, CONDUIT BOX | 1.000 EA |
| 51XW2520A12 | .25-20 X .75, TAPTITE II, HEX WSHR SLTD | 2.000 EA |
| 11XW1032G06 | 10-32 X .38, TAPTITE II, HEX WSHR SLTD U | 1.000 EA |
| HW3001B02 | BRASS CUP WASHER W/GROUND SYMBOL TAB, | 1.000 EA |
| 35EP1100A02 | FR ENDPLATE, TEFC W/GREASER | 1.000 EA |
| HW4500A01 | 1641B(ALEMITE)400 UNIV, GREASE FITT | 1.000 EA |
| HW5100A03SP | WAVY WASHER (W1543-017) | 1.000 EA |
| 35EP1102A02 | PU ENDPLATE, MACH | 1.000 EA |
| HW4500A01 | 1641B(ALEMITE)400 UNIV, GREASE FITT | 1.000 EA |
| HA3100A37 | THRUBOLT 10-32 X 8.500 | 4.000 EA |
| XY1032A02 | 10-32 HEX NUT DIRECTIONAL SERRATION | 4.000 EA |
| 51XB1214A16 | 12-14X1.00 HXWSSLD SERTYB | 1.000 EA |
| 35FH4005A02SP | IEC FH W/GREASER - W/AUTOPHERETIC PRIMER | 1.000 EA |
| 51XW1032A06 | 10-32 X .38, TAPTITE II, HEX WSHR SLTD S | 3.000 EA |
| 06CB3500 | CONDUIT BOX LID - ALUMINUM DIE CAST | 1.000 EA |
| 06GS1001 | GASKET, CONDUIT BOX LID | 1.000 EA |
| 51XW2520A12 | .25-20 X .75, TAPTITE II, HEX WSHR SLTD | 2.000 EA |
| HW2501D13SP | KEY, 3/16 SQ X 1.375 | 1.000 EA |

| Parts List (continued) | | |
|------------------------|---|----------|
| Part Number | Description | Quantity |
| HA7000A01 | KEY RETAINER 7/8" DIA SHAFT | 1.000 EA |
| 85XU0407S04 | 4X1/4 U DRIVE PIN STAINLESS | 2.000 EA |
| MJ1000A75 | GREASE, POLYREX EM EXXON | 0.050 LB |
| MG1000G27 | PAINT- S9282E CHARCOAL GREY | 0.022 GA |
| 34FN3002A01SP | EXTERNAL FAN, PLASTIC, .637/.639 HUB W/ | 1.000 EA |
| NP1256L | ALUM, UL CSA CC, W/O THERMAL, LASER | 1.000 EA |
| LB1125C04 | STD-E (STOCK CTN LABEL STD-E WITH FLAG) | 1.000 EA |
| 36PA1000 | PACK GROUP W/LB5001 | 1.000 EA |
| LC0005E01 | CONN.DIA./WARNING LABEL (LC0005/LB1119) | 1.000 EA |

| Accessories | | |
|--------------------|--------------------|-------------------|
| Part Number | Description | Multiplier |
| 35-1300 | C FACE KIT | A8 |

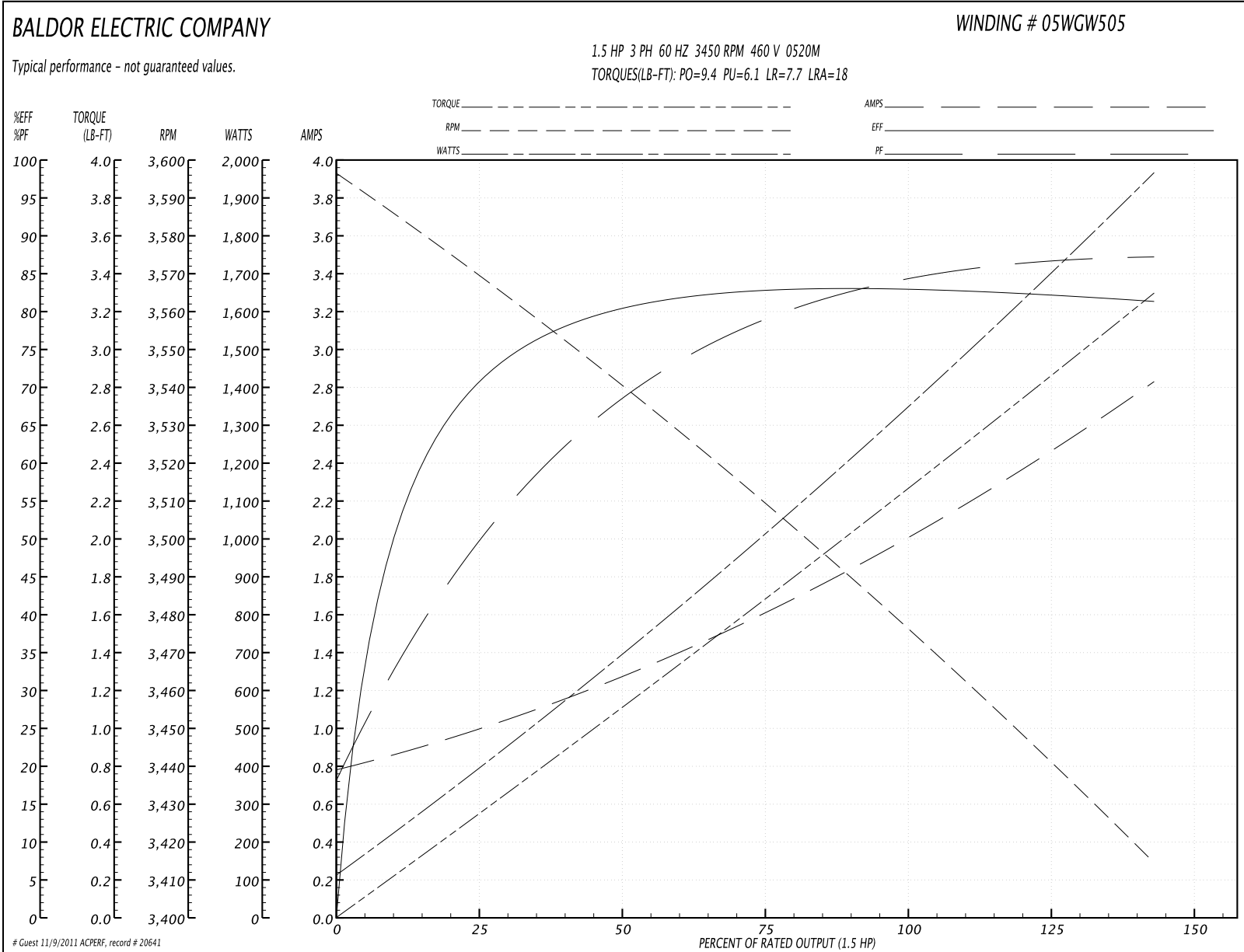
Performance Data at 460V, 60Hz, 1.5HP (Typical performance - Not guaranteed values)
General Characteristics

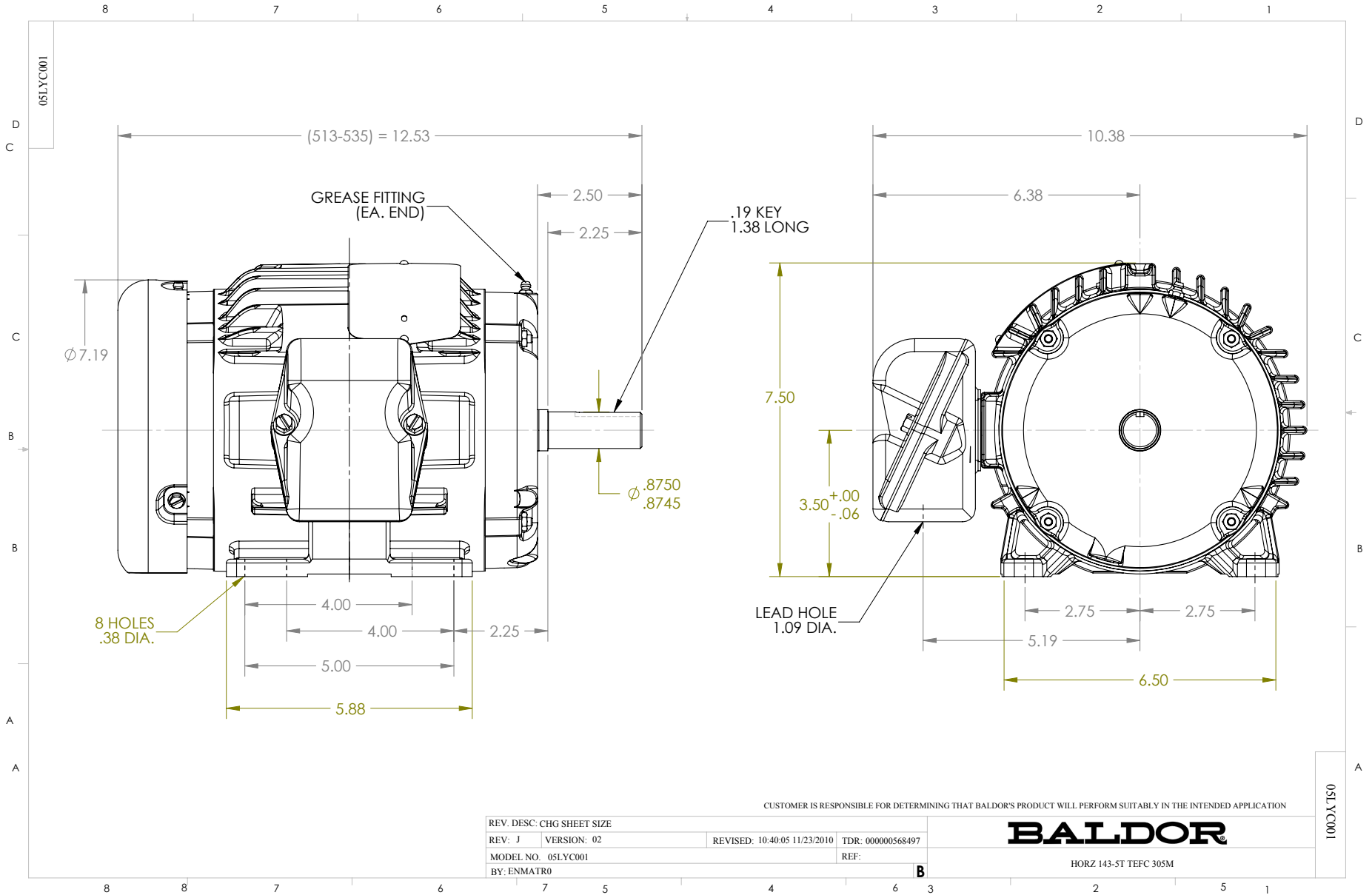
| | | | |
|---------------------------------|--------------------------------|-----------------------------|-----------|
| Full Load Torque: | 2.2 LB-FT | Start Configuration: | DOL |
| No-Load Current: | 0.8 Amps | Break-Down Torque: | 9.4 LB-FT |
| Line-line Res. @ 25°C.: | 11.6 Ohms A Ph / 0.0 Ohms B Ph | Pull-Up Torque: | 6.1 LB-FT |
| Temp. Rise @ Rated Load: | 42 C | Locked-Rotor Torque: | 7.7 LB-FT |
| Temp. Rise @ S.F. Load: | 49 C | Starting Current: | 18.0 Amps |

Load Characteristics

| % of Rated Load | 25 | 50 | 75 | 100 | 125 | 150 | S.F. |
|----------------------|--------|--------|--------|--------|--------|--------|------|
| Power Factor: | 58.0 | 76.0 | 85.0 | 89.0 | 92.0 | 94.0 | 0.0 |
| Efficiency: | 71.6 | 80.1 | 82.6 | 83.0 | 82.5 | 81.3 | 0.0 |
| Speed: | 3566.0 | 3540.0 | 3513.0 | 3481.0 | 3449.0 | 3413.0 | 0.0 |
| Line Amperes: | 1.0 | 1.2 | 1.6 | 2.0 | 2.4 | 2.8 | 2.2 |

Performance Graph at 460V, 60Hz, 1.5HP Typical performance - Not guaranteed values

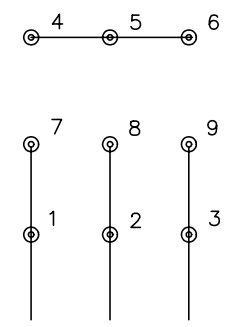




CD0005

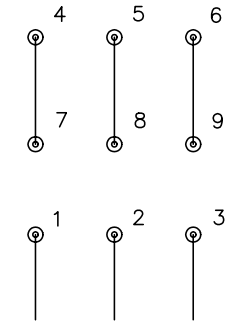


LOW VOLTAGE
(2Y)



LINE

HIGH VOLTAGE
(1Y)



LINE

NOTES:

1. INTERCHANGE ANY TWO LINE LEADS TO REVERSE ROTATION.
2. OPTIONAL THERMOSTATS ARE PROVIDED WHEN SPECIFIED.
3. ACTUAL NUMBER OF INTERNAL PARALLEL CIRCUITS MAY BE A MULTIPLE OF THOSE SHOWN ABOVE.
4. LEAD COLORS ARE OPTIONAL. LEADS MUST ALWAYS BE NUMBERED AS SHOWN.

| | | | |
|---|---------|-------------------------|--------------|
| REV. DESC: REVISE TO SHOW OPTIONAL COLORS | | | |
| REV. LTR: E | BY: JLP | REVISED: 01/19/99 10:15 | TDR: 0171435 |
| 90000 | | FILE: AAA00005140 | MDL: - |
| | | MTL: - | |

BALDOR ELECTRIC Co.

3PH, DV, 9 LEADS

CD0005