

BALDOR® • RELIANCE

Product Information Packet

ELECTRIC MOTOR WHOLESAL.COM

M3584T

1.5HP,1755RPM,3PH,60HZ,145T,0521M,TEFC,F

Part Detail							
Revision:	G	Status:	INA/A	Change #:		Proprietary:	No
Type:	AC	Prod. Type:	0521M	Elec. Spec:	05WGX007	CD Diagram:	
Enclosure:	TEFC	Mfg Plant:		Mech. Spec:	05C001	Layout:	
Frame:	145T	Mounting:	F1	Poles:	04	Created Date:	11-08-2006
Base:	RG	Rotation:	R	Insulation:	F	Eff. Date:	10-02-2009
Leads:	9#18	Literature:		Elec. Diagram:		Replaced By:	

Nameplate NP1256L									
CAT.NO.	M3584T								
SPEC.	05C001X007H1								
HP	1.5								
VOLTS	208-230/460								
AMP	5.1-4.8/2.4								
RPM	1755								
FRAME	145T	HZ			60	PH	3		
SER.F.	1.15	CODE			M	DES	B	CLASS	F
NEMA-NOM-EFF	84	PF			70				
RATING	40C AMB-CONT								
CC	010A	USABLE AT 208V							
DE	6205	ODE			6203				
ENCL	TEFC	SN							

Parts List		
Part Number	Description	Quantity
SA149977	SA 05C001X007H1	1.000 EA
RA138879	RA 05C001X007H1	1.000 EA
34FN3002B01	EXTERNAL FAN, PLASTIC, .637/.639 HUB W/	1.000 EA
S/P101-000-000	EPACT PROCEDURES-FS PLANT-POLYREX EM, NO	1.000 EA
06CB3000	CONDUIT BOX CAST	1.000 EA
06GS1000	GASKET, CONDUIT BOX	1.000 EA
51XW2520A12	.25-20 X .75, TAPTITE II, HEX WSHR SLTD	2.000 EA
11XW1032G06	10-32 X .38, TAPTITE II, HEX WSHR SLTD U	1.000 EA
HW3001B02	BRASS CUP WASHER W/GROUND SYMBOL TAB,	1.000 EA
35EP1100A02	FR ENDPLATE, TEFC W/GREASER	1.000 EA
HW4500A01	1641B(ALEMITE)400 UNIV, GREASE FITT	1.000 EA
HW5100A03SP	WAVY WASHER (W1543-017)	1.000 EA
35EP1102A02	PU ENDPLATE, MACH	1.000 EA
HW4500A01	1641B(ALEMITE)400 UNIV, GREASE FITT	1.000 EA
HA3100A37	THRUBOLT 10-32 X 8.500	4.000 EA
XY1032A02	10-32 HEX NUT DIRECTIONAL SERRATION	4.000 EA
51XB1214A16	12-14X1.00 HXWSSLD SERTYB	1.000 EA
35FH4005A02SP	IEC FH W/GREASER - W/AUTOPHERETIC PRIMER	1.000 EA
51XW1032A06	10-32 X .38, TAPTITE II, HEX WSHR SLTD S	3.000 EA
06CB3500	CONDUIT BOX LID - ALUMINUM DIE CAST	1.000 EA
06GS1001	GASKET, CONDUIT BOX LID	1.000 EA
51XW2520A12	.25-20 X .75, TAPTITE II, HEX WSHR SLTD	2.000 EA
HW2501D13SP	KEY, 3/16 SQ X 1.375	1.000 EA
HA7000A01	KEY RETAINER 7/8" DIA SHAFT	1.000 EA

Parts List (continued)		
Part Number	Description	Quantity
85XU0407S04	4X1/4 U DRIVE PIN STAINLESS	2.000 EA
MJ1000A75	GREASE, POLYREX EM EXXON	0.050 LB
MG1000G27	PAINT- S9282E CHARCOAL GREY	0.022 GA
LC0005E01	CONN.DIA./WARNING LABEL (LC0005/LB1119)	1.000 EA
LB1125C04	STD-E (STOCK CTN LABEL STD-E WITH FLAG)	1.000 EA
NP1256L	ALUM, UL CSA CC, W/O THERMAL, LASER	1.000 EA
36PA1000	PACK GROUP W/LB5001	1.000 EA

Accessories		
Part Number	Description	Multiplier
35-1300	C FACE KIT	A8

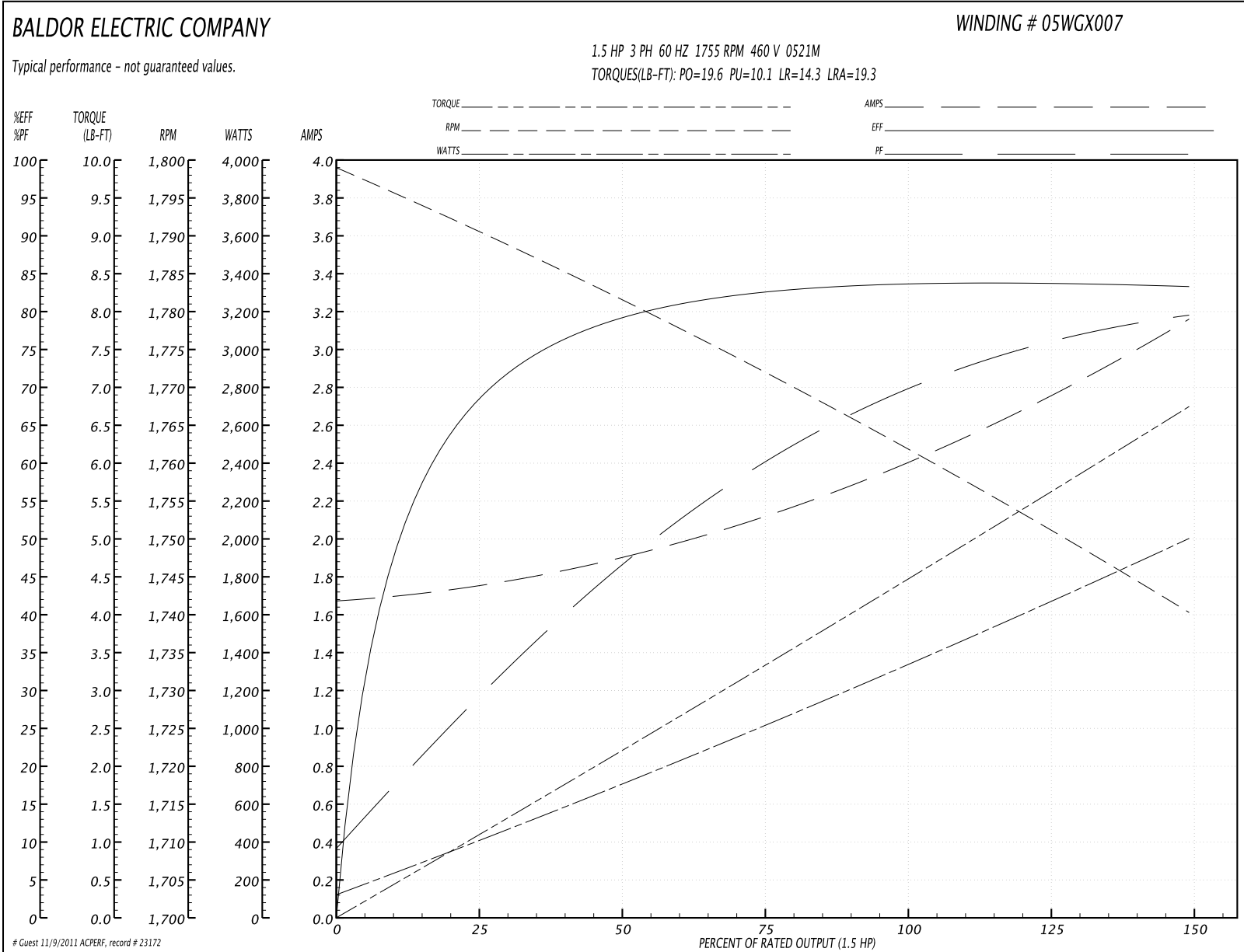
Performance Data at 460V, 60Hz, 1.5HP (Typical performance - Not guaranteed values)
General Characteristics

Full Load Torque:	4.43 LB-FT	Start Configuration:	DOL
No-Load Current:	1.69 Amps	Break-Down Torque:	19.6 LB-FT
Line-line Res. @ 25°C.:	10.0 Ohms A Ph / 0.0 Ohms B Ph	Pull-Up Torque:	10.1 LB-FT
Temp. Rise @ Rated Load:	44 C	Locked-Rotor Torque:	14.3 LB-FT
Temp. Rise @ S.F. Load:	51 C	Starting Current:	19.3 Amps

Load Characteristics

% of Rated Load	25	50	75	100	125	150	S.F.
Power Factor:	29.0	47.0	60.0	70.0	76.0	80.0	73.0
Efficiency:	68.7	80.1	83.3	84.4	84.4	83.6	84.4
Speed:	1791.0	1782.0	1772.0	1762.0	1752.0	1740.0	1756.0
Line Amperes:	1.73	1.88	2.11	2.42	2.75	3.15	2.62

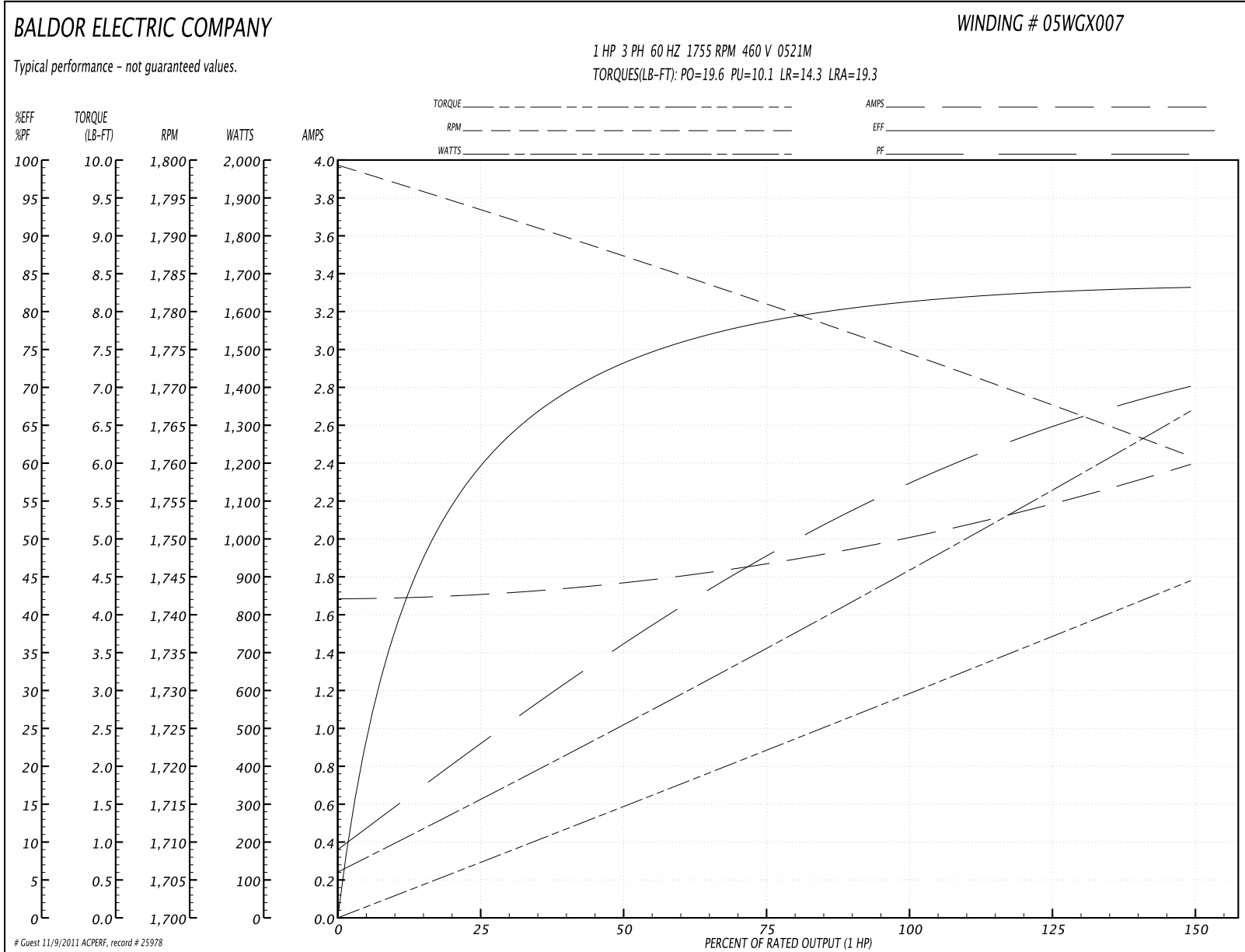
Performance Graph at 460V, 60Hz, 1.5HP Typical performance - Not guaranteed values

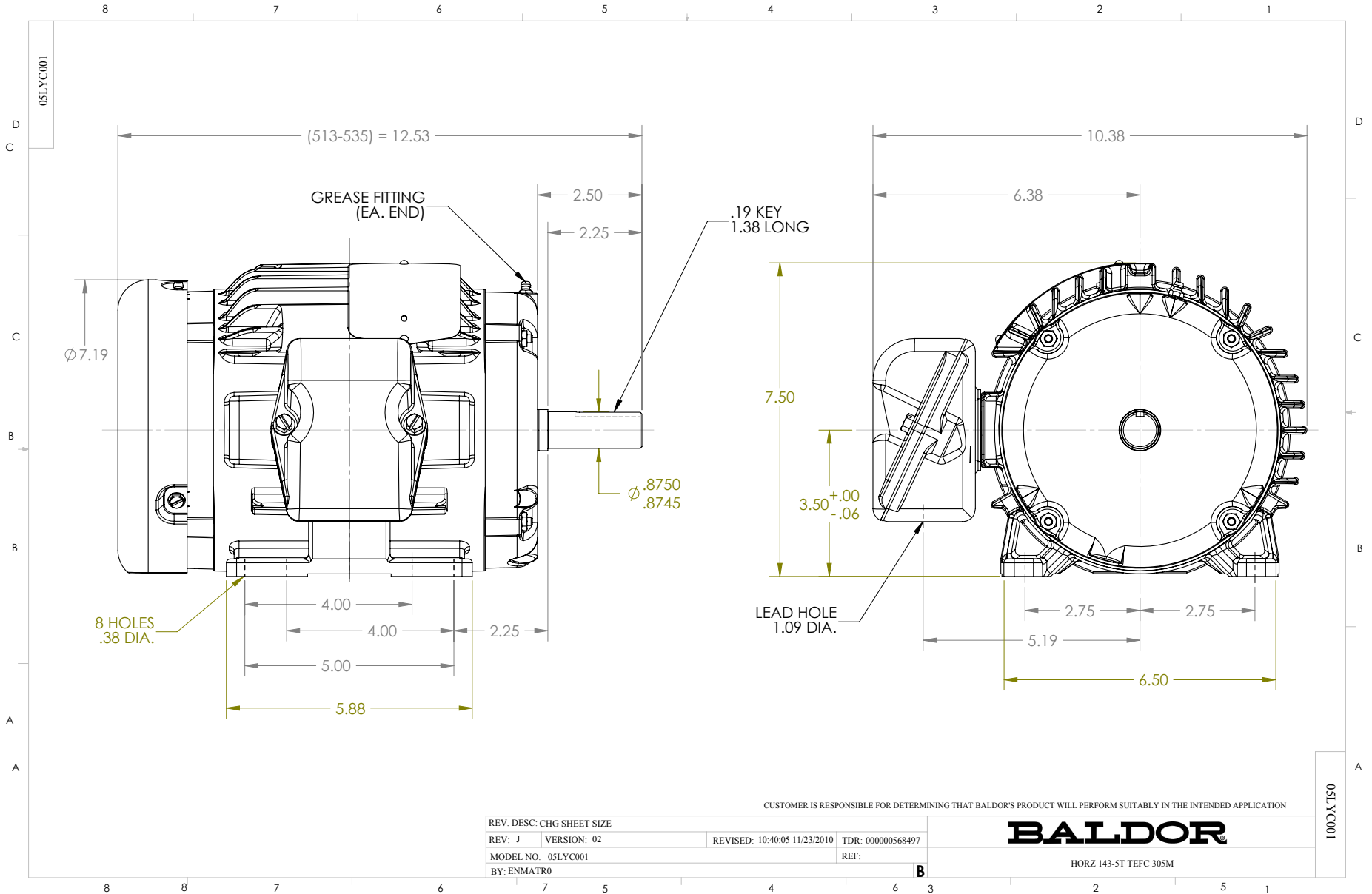


Performance Data at 460V, 60Hz, 1.0HP (Typical performance - Not guaranteed values)

General Characteristics							
Full Load Torque:	2.94 LB-FT			Start Configuration:	DOL		
No-Load Current:	1.69 Amps			Break-Down Torque:	19.6 LB-FT		
Line-line Res. @ 25°C.:	10.5 Ohms A Ph / 0.0 Ohms B Ph			Pull-Up Torque:	10.1 LB-FT		
Temp. Rise @ Rated Load:	34 C			Locked-Rotor Torque:	14.3 LB-FT		
Temp. Rise @ S.F. Load:	44 C			Starting Current:	19.3 Amps		
Load Characteristics							
% of Rated Load	25	50	75	100	125	150	S.F.
Power Factor:	23.0	36.0	48.0	57.0	65.0	70.0	70.0
Efficiency:	58.2	73.1	78.7	81.2	82.6	83.2	83.2
Speed:	1794.0	1788.0	1781.0	1774.0	1768.0	1761.0	1761.0
Line Amperes:	1.7	1.76	1.86	2.02	2.18	2.39	2.39

Performance Graph at 460V, 60Hz, 1.0HP Typical performance - Not guaranteed values

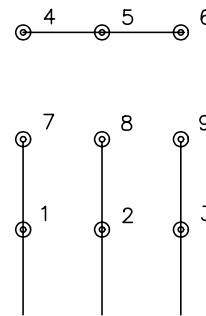




CD0005

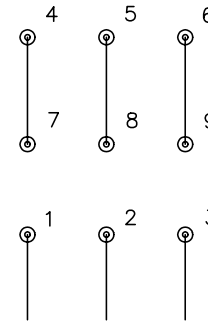


LOW VOLTAGE
(2Y)



LINE

HIGH VOLTAGE
(1Y)



LINE

NOTES:

1. INTERCHANGE ANY TWO LINE LEADS TO REVERSE ROTATION.
2. OPTIONAL THERMOSTATS ARE PROVIDED WHEN SPECIFIED.
3. ACTUAL NUMBER OF INTERNAL PARALLEL CIRCUITS MAY BE A MULTIPLE OF THOSE SHOWN ABOVE.
4. LEAD COLORS ARE OPTIONAL. LEADS MUST ALWAYS BE NUMBERED AS SHOWN.

REV. DESC: REVISE TO SHOW OPTIONAL COLORS			
REV. LTR: E	BY: JLP	REVISED: 01/19/99 10:15	TDR: 0171435
90000		FILE: AAA00005140	MDL: -
		MTL: -	

BALDOR ELECTRIC Co.

3PH, DV, 9 LEADS

CD0005