

BALDOR® • RELIANCE

Product Information Packet

ELECTRIC MOTOR WHOLESAL.COM

VJMM3157T

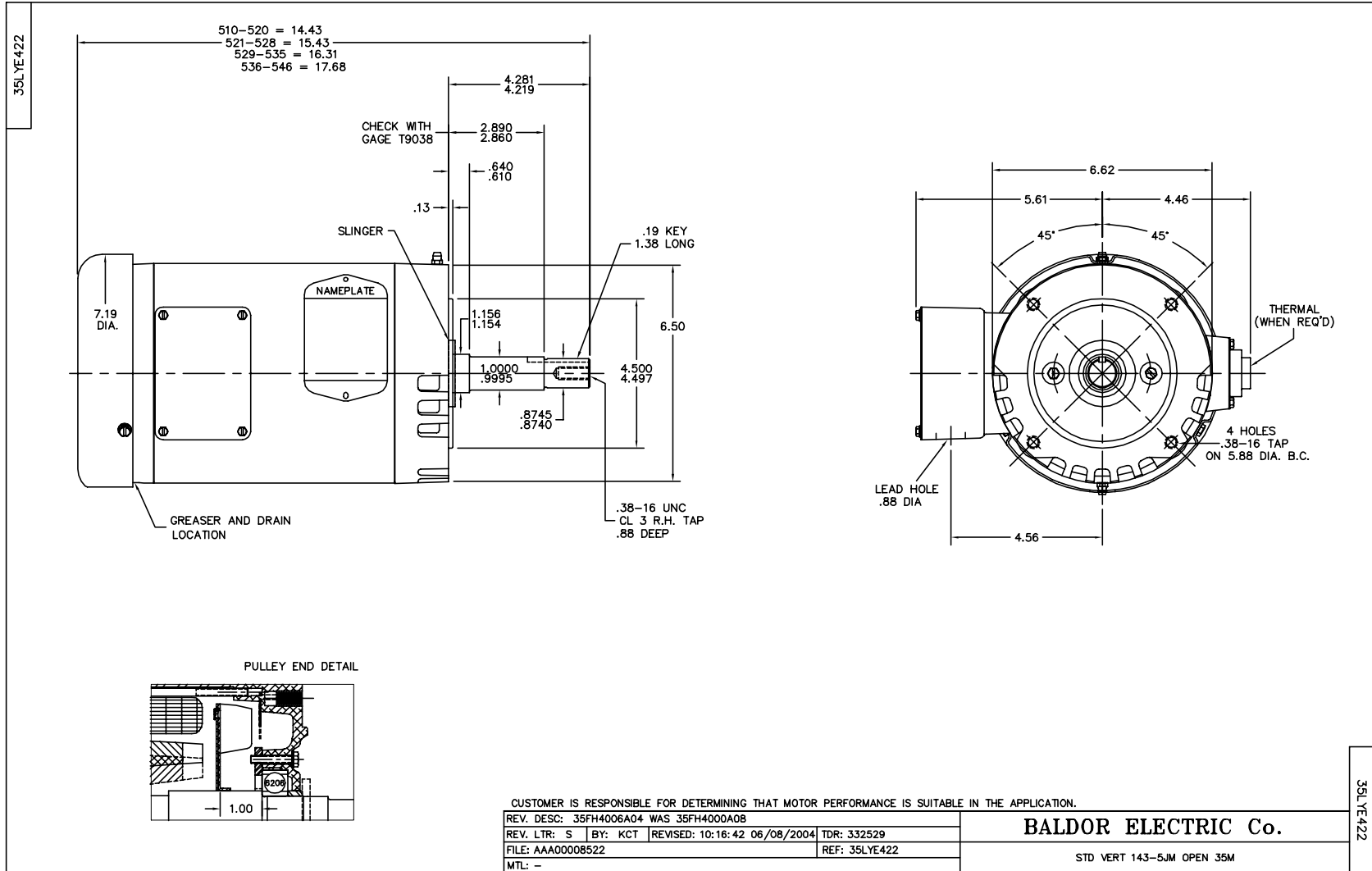
2HP,1755RPM,3PH,60HZ,145JM,3523M,ODTF,F1

| Part Detail | | | | | | | |
|-------------|-------|-------------|-------|----------------|----------|---------------|------------|
| Revision: | B | Status: | PRD/A | Change #: | | Proprietary: | No |
| Type: | AC | Prod. Type: | 3523M | Elec. Spec: | 35WGP499 | CD Diagram: | |
| Enclosure: | ODTF | Mfg Plant: | | Mech. Spec: | 35E422 | Layout: | |
| Frame: | 145JM | Mounting: | F1 | Poles: | 04 | Created Date: | 06-08-2010 |
| Base: | N | Rotation: | R | Insulation: | F | Eff. Date: | 03-11-2011 |
| Leads: | 9#18 | Literature: | | Elec. Diagram: | | Replaced By: | |

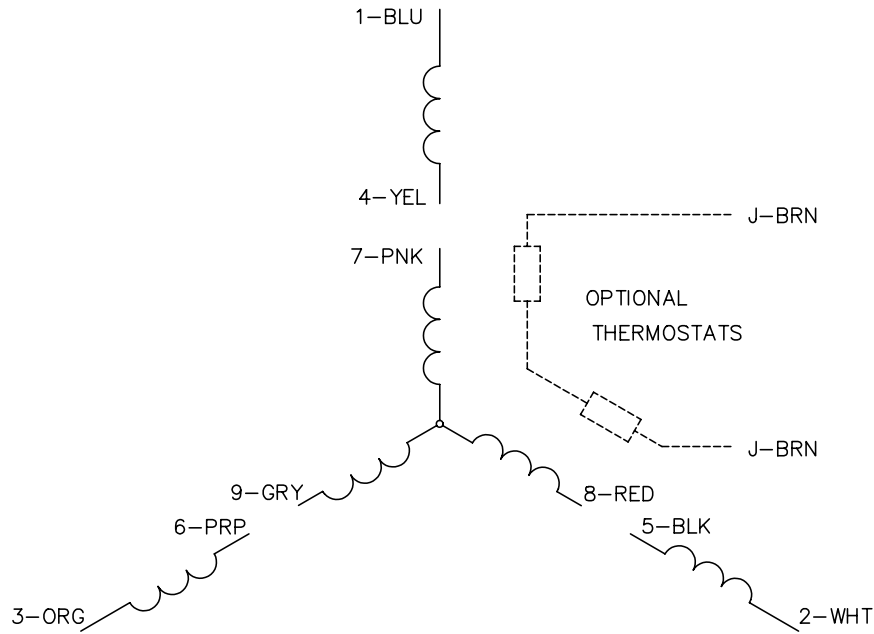
| Nameplate NP1256L | | | | | | | | | |
|-------------------|--------------|----------------|--|--|------|-----|---|-------|---|
| CAT.NO. | VJMM3157T | | | | | | | | |
| SPEC. | 35E422P499H1 | | | | | | | | |
| HP | 2 | | | | | | | | |
| VOLTS | 208-230/460 | | | | | | | | |
| AMP | 6.8-6.3/3.15 | | | | | | | | |
| RPM | 1755 | | | | | | | | |
| FRAME | 145JM | HZ | | | 60 | PH | 3 | | |
| SER.F. | 1.15 | CODE | | | L | DES | B | CLASS | F |
| NEMA-NOM-EFF | 84 | PF | | | 71 | | | | |
| RATING | 40C AMB-CONT | | | | | | | | |
| CC | 010A | USABLE AT 208V | | | 6.8 | | | | |
| DE | 6206 | ODE | | | 6203 | | | | |
| ENCL | ODTF | SN | | | | | | | |
| | | | | | | | | | |

| Parts List | | |
|----------------|--|----------|
| Part Number | Description | Quantity |
| SA198131 | SA 35E422P499H1 | 1.000 EA |
| RA185498 | RA 35E422P499H1 | 1.000 EA |
| S/P101-000-000 | EPACT PROCEDURES-FS PLANT-POLYREX EM, NO | 1.000 EA |
| NS2512A01 | INSULATOR, CONDUIT BOX X | 1.000 EA |
| 35CB3007 | 35 CB CASTING W/.88 DIA. LEAD HOLE | 1.000 EA |
| 51XB1016A07 | 10-16 X 7/16 HXWSSLD SERTYB | 2.000 EA |
| 11XW1032G06 | 10-32 X .38, TAPTITE II, HEX WSHR SLTD U | 1.000 EA |
| 35EP3201A02 | FR ENDPLATE, MACH | 1.000 EA |
| HA1100A03 | SCREEN, RODENT | 1.000 EA |
| 51XT1032A04 | 10-32X1/4 HX WA SL SR TYT (F/S) | 4.000 EA |
| HW1000A10 | #10 FLAT WASHER (SAE) | 4.000 EA |
| HW4500A01 | 1641B(ALEMITE)400 UNIV, GREASE FITT | 1.000 EA |
| HW5100A03SP | WAVY WASHER (W1543-017) | 1.000 EA |
| 35EP3401A05 | B/OPEN FACE MTD. ENDPLATE 35 FRAME 206 B | 1.000 EA |
| 35AD2001 | AIR BAFFLE | 1.000 EA |
| 15XF0632A06 | 6-32 X 3/8 PHILL PAN HD TYPE F | 4.000 EA |
| HA1102A08 | RODENT SCREEN 35 OPEN FACE MTD | 1.000 EA |
| 51XT1032A04 | 10-32X1/4 HX WA SL SR TYT (F/S) | 4.000 EA |
| HW1000A10 | #10 FLAT WASHER (SAE) | 4.000 EA |
| HW4500A01 | 1641B(ALEMITE)400 UNIV, GREASE FITT | 1.000 EA |
| 51XN1032A16 | 10-32 X 1.000 HX WS SL SR | 2.000 EA |
| 35FH4006A04 | DRIP COVER SPECIAL, W/ AUTOPHERETIC PRIM | 1.000 EA |
| 51XW1032A06 | 10-32 X .38, TAPTITE II, HEX WSHR SLTD S | 3.000 EA |
| 35CB4521 | 35 LIPPED CB LID (GALV & PHOSPH) | 1.000 EA |

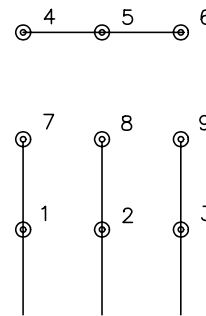
| Parts List (continued) | | |
|------------------------|--|----------|
| Part Number | Description | Quantity |
| 51XW0832A07 | 8-32 X .44, TAPTITE II, HEX WSHR SLTD SE | 4.000 EA |
| HA1005A02SP | SLINGER, OD 2.00, ID 1.14, 206 BRG, | 1.000 EA |
| HW2501D13SP | KEY, 3/16 SQ X 1.375 | 1.000 EA |
| HA7000A01 | KEY RETAINER 7/8" DIA SHAFT | 1.000 EA |
| 85XU0407S04 | 4X1/4 U DRIVE PIN STAINLESS | 2.000 EA |
| MJ1000A75 | GREASE, POLYREX EM EXXON | 0.050 LB |
| 35FN3002A05SP | EXFN, PLASTIC, 6.376 OD, .638 ID | 1.000 EA |
| 51XB1214A16 | 12-14X1.00 HXWSSLD SERTYB | 1.000 EA |
| MG1000G27 | PAINT- S9282E CHARCOAL GREY 55 GALLONS | 0.017 GA |
| HA3100A15 | THRUBOLT 10-32 X 8.375 | 4.000 EA |
| LB1125C04 | STD-E (STOCK CTN LABEL STD-E WITH FLAG) | 1.000 EA |
| LC0005E01 | CONN.DIA./WARNING LABEL (LC0005/LB1119) | 1.000 EA |
| NP1256L | ALUM, UL CSA CC, W/O THERMAL, LASER | 1.000 EA |
| 36PA1000 | PACK GROUP W/LB5001 | 1.000 EA |
| PK3082 | STYROFOAM CRADLE | 1.000 EA |



CD0005

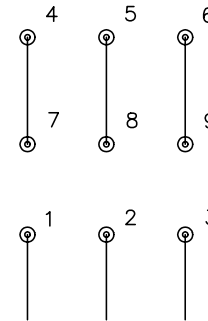


LOW VOLTAGE
(2Y)



LINE

HIGH VOLTAGE
(1Y)



LINE

NOTES:

1. INTERCHANGE ANY TWO LINE LEADS TO REVERSE ROTATION.
2. OPTIONAL THERMOSTATS ARE PROVIDED WHEN SPECIFIED.
3. ACTUAL NUMBER OF INTERNAL PARALLEL CIRCUITS MAY BE A MULTIPLE OF THOSE SHOWN ABOVE.
4. LEAD COLORS ARE OPTIONAL. LEADS MUST ALWAYS BE NUMBERED AS SHOWN.

| | | | |
|---|---------|-------------------------|--------------|
| REV. DESC: REVISE TO SHOW OPTIONAL COLORS | | | |
| REV. LTR: E | BY: JLP | REVISED: 01/19/99 10:15 | TDR: 0171435 |
| 9000D | | FILE: AAA00005140 | MDL: - |
| | | MTL: - | |

BALDOR ELECTRIC Co.

3PH, DV, 9 LEADS

CD0005