

# **BALDOR® • RELIANCE**

**Product Information Packet**

**ELECTRIC MOTOR WHOLESALE.COM**

**VM7042T**

**3//2HP,1750//1460RPM,3PH,60//50HZ,182TC**

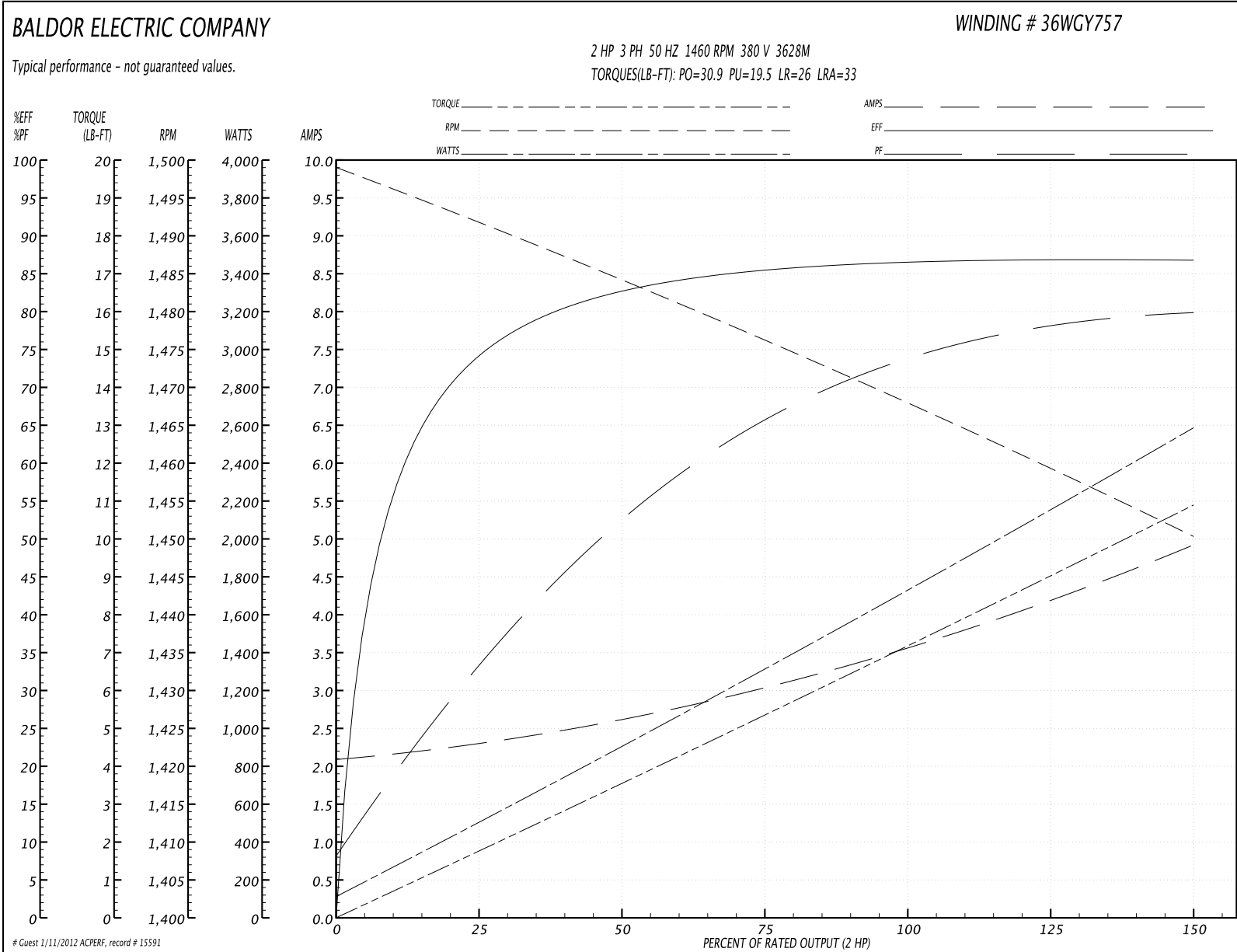
Part Detail								
Revision:	-	Status:	PRD/A	Change #:		Proprietary:	No	
Type:	AC	Prod. Type:	3628M	Elec. Spec:	36WGY757	CD Diagram:		
Enclosure:	XPFC	Mfg Plant:		Mech. Spec:	36N024	Layout:		
Frame:	182TC	Mounting:	F1	Poles:	04	Created Date:	06-19-2010	
Base:	N	Rotation:	R	Insulation:	B	Eff. Date:	07-12-2010	
Leads:	9#16	Literature:		Elec. Diagram:		Replaced By:		
Nameplate NP1426XP								
NO.		CC				010A		
SER.								
SPEC.	36N024Y757H1							
CAT.NO.	VM7042T							
HP	3//2	T. CODE						T3C
VOLTS	230/460//190/380							
AMPS	8.2/4.1//7.2/3.6							
RPM	1750//1460							
HZ	60//50	PH	3	CL	B			
SER.F.	1.00	DES	B	CODE	K			
RATING	40C AMB-CONT							
FRAME	182TC	NEMA-NOM-EFF	87.5	PF	78			
USABLE AT 208V	8.6							

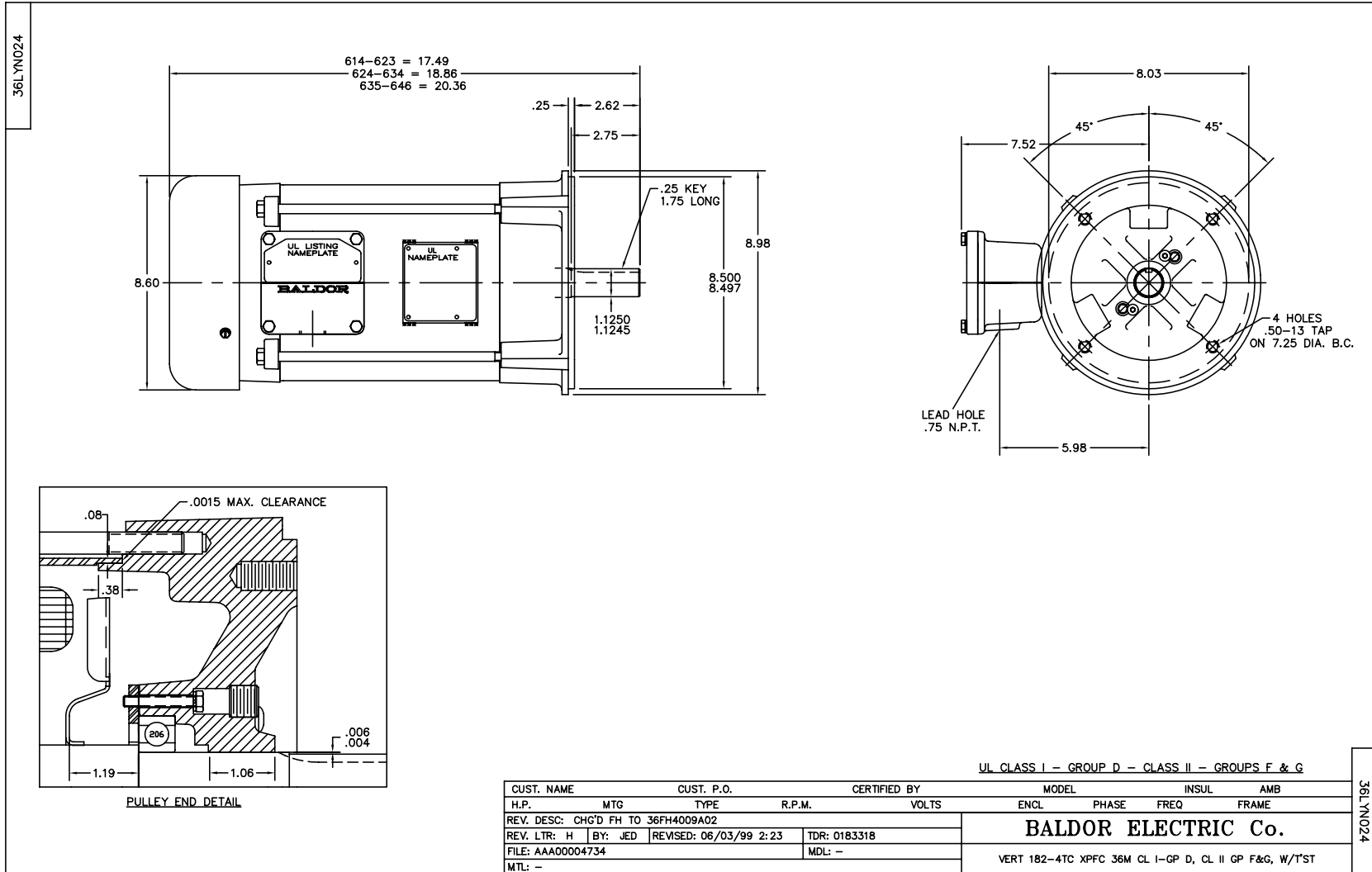
Parts List		
Part Number	Description	Quantity
SA199288	SA 36N024Y757H1	1.000 EA
RA186624	RA 36N024Y757H1	1.000 EA
35CB3001A02SP	EXPL PROOF CONDUIT BOX, 3/4"PIPE TAP LEA	1.000 EA
11XW1032G06	10-32 X .38, TAPTITE II, HEX WSHR SLTD U	1.000 EA
HW3001B01	003SS CUP WASHER, FOR #8 SCREW	1.000 EA
36EP3700A01	FR ENDPLATE, MACH	1.000 EA
HW4500A19	1/4-28X1/4 SLOTTED PLUG F/S	2.000 EA
HW5100A05	WVY WSHR F/205 & 304 BRGS	1.000 EA
36EP1703A01	PU ENDPLATE, MACH	1.000 EA
51XN1032A20	10-32 X 1 1/4 HX WS SL SR	2.000 EA
HW4001A01	1/4 HX SOC PIPE PLG (F/S) ALLOY STEEL W/	2.000 EA
60XN1032A07	10-32 X 1/2 TRUSS HEAD, TORX SERRATED ZN	2.000 EA
36FH4009A02	IEC FH NO GREASER, W/ AUTOPHERETIC PRIME	1.000 EA
51XW1032A06	10-32 X .38, TAPTITE II, HEX WSHR SLTD S	3.000 EA
35CB3500A01SP	CONDUIT BOX LID, MACH	1.000 EA
51XN2520A16	SCREW, HEX WS SLT, ZN, 1/4-20 X 1.00	4.000 EA
HW2501E16	KEY, 1/4 SQ X 1.750	1.000 EA
HA7000A02	KEY RETAINER RING, 1 1/8 DIA, 1 3/8 DIA	1.000 EA
85XU0407S04	4X1/4 U DRIVE PIN STAINLESS	6.000 EA
NP0018	NP- XP CONDUIT BOX DO NOT MAKE SELLABLE	1.000 EA
MJ1000A75	GREASE, POLYREX EM EXXON	0.050 LB
36FN3000A01SP	EXFN, PLASTIC, 7.00 OD, .912 ID	1.000 EA
51XB1214A16	12-14X1.00 HXWSSLD SERTYB	1.000 EA
MG1025Z20	ACTIVATOR WILKOFAS 060.32	0.010 GA

Parts List (continued)		
Part Number	Description	Quantity
MG1025G29	PAINT 789.205 DARK GRAY METALLIC (USE W/	0.022 GA
HA3105A06	THRUBOLT- 3/8-16 X 10.500 X	4.000 EA
LB1119	WARNING LABEL	1.000 EA
LB1125C04	STD-E (STOCK CTN LABEL STD-E WITH FLAG)	1.000 EA
LC0145B01	CONNECTION LABEL	1.000 EA
NP1426XP	UL/CSA, CLI GP-D,CLII GP-F&G,CC	1.000 EA
36PA1001	PACKAGING GROUP	1.000 EA
PK3082	STYROFOAM CRADLE	1.000 EA

Performance Data at 380V, 50Hz, 2.0HP (Typical performance - Not guaranteed values)							
General Characteristics							
Full Load Torque:	7.17 LB-FT			Start Configuration:	DOL		
No-Load Current:	2.1 Amps			Break-Down Torque:	30.9 LB-FT		
Line-line Res. @ 25°C.:	4.12 Ohms A Ph / 0.0 Ohms B Ph			Pull-Up Torque:	19.5 LB-FT		
Temp. Rise @ Rated Load:	41 C			Locked-Rotor Torque:	26.0 LB-FT		
Temp. Rise @ S.F. Load:	47 C			Starting Current:	33.0 Amps		
Load Characteristics							
% of Rated Load	25	50	75	100	125	150	S.F.
Power Factor:	33.0	53.0	65.0	73.0	77.0	81.0	75.0
Efficiency:	75.4	83.9	86.4	87.2	86.8	85.9	86.9
Speed:	1492.0	1484.0	1476.0	1468.0	1460.0	1450.0	1463.0
Line Amperes:	2.3	2.6	3.0	3.6	4.2	4.9	3.96

Performance Graph at 380V, 50Hz, 2.0HP Typical performance - Not guaranteed values





CD0005



LOW VOLTAGE  
(2Y)



LINE

HIGH VOLTAGE  
(1Y)



LINE

NOTES:

1. INTERCHANGE ANY TWO LINE LEADS TO REVERSE ROTATION.
2. OPTIONAL THERMOSTATS ARE PROVIDED WHEN SPECIFIED.
3. ACTUAL NUMBER OF INTERNAL PARALLEL CIRCUITS MAY BE A MULTIPLE OF THOSE SHOWN ABOVE.
4. LEAD COLORS ARE OPTIONAL. LEADS MUST ALWAYS BE NUMBERED AS SHOWN.

REV. DESC: REVISE TO SHOW OPTIONAL COLORS			
REV. LTR: E	BY: JLP	REVISED: 01/19/99 10:15	TDR: 0171435
90000		FILE: AAA00005140	MDL: -
		MTL: -	

**BALDOR ELECTRIC Co.**

3PH, DV, 9 LEADS

CD0005