

BALDOR® • RELIANCE

Product Information Packet

ELECTRIC MOTOR WHOLESAL.COM

VM7071T

2//1.5HP,3450//2850RPM,3PH,60//50HZ,145T

Part Detail							
Revision:	A	Status:	PRD/A	Change #:		Proprietary:	No
Type:	AC	Prod. Type:	3526M	Elec. Spec:	35WGT962	CD Diagram:	
Enclosure:	XPFC	Mfg Plant:		Mech. Spec:	35E380	Layout:	
Frame:	145TC	Mounting:	F1	Poles:	02	Created Date:	05-28-2010
Base:	N	Rotation:	R	Insulation:	B	Eff. Date:	03-28-2011
Leads:	9#18	Literature:		Elec. Diagram:		Replaced By:	
Nameplate NP1426XP							
NO.		CC				010A	
SER.							
SPEC.	35E380T962H2						
CAT.NO.	VM7071T						
HP	2//1.5	T. CODE	T3C				
VOLTS	230/460//190/380						
AMPS	5.2/2.6//4.8/2.4						
RPM	3450//2850						
HZ	60//50	PH	3	CL	B		
SER.F.	1.00	DES	B	CODE	L		
RATING	40C AMB-CONT						
FRAME	145TC	NEMA-NOM-EFF	84	PF	88		
USABLE AT 208V	5.6						

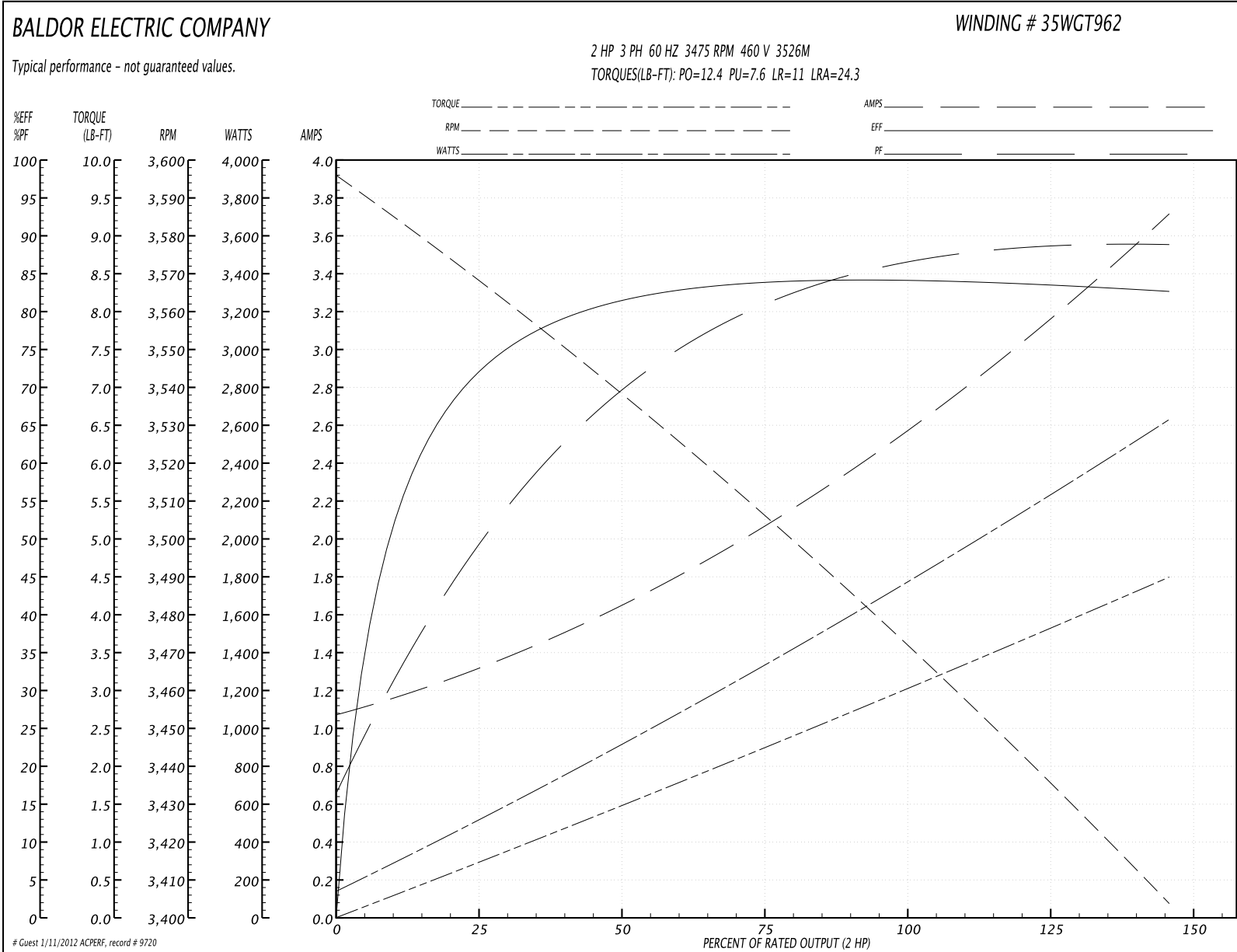
Parts List		
Part Number	Description	Quantity
SA197181	SA 35E380T962H2	1.000 EA
RA184615	RA 35E380T962H2	1.000 EA
34FN3002A01SP	EXTERNAL FAN, PLASTIC, .637/.639 HUB W/	1.000 EA
MJ5000A09	SEALANT, IONEX 150 BK - 400 ML KIT	0.050 EA
35CB3001A02SP	EXPL PROOF CONDUIT BOX, 3/4"PIPE TAP LEA	1.000 EA
11XW1032G06	10-32 X .38, TAPTITE II, HEX WSHR SLTD U	1.000 EA
HW3001B01	003SS CUP WASHER, FOR #8 SCREW	1.000 EA
35EP3700A01SP	FR ENDPLATE, XPFC	1.000 EA
HW5100A03SP	WAVY WASHER (W1543-017)	1.000 EA
35EP3702A01SP	PU EP-205 BRG-35X-56C-143-5TC	1.000 EA
51XN1032A20	10-32 X 1 1/4 HX WS SL SR	2.000 EA
HA3013A01	1/2-20X5/8 SPL.HX BOLT	2.000 EA
HW3021C06	3/32 DI X .625 PIN (F/S)	2.000 EA
XY3118A12	5/16-18 HEX NUT DIRECTIONAL SERRATION	4.000 EA
51XB1214A16	12-14X1.00 HXWSSLD SERTYB	1.000 EA
35FH4005A01SP	IEC FH NO GREASER W/AUTOPHORETIC PRIMER	1.000 EA
51XW1032A06	10-32 X .38, TAPTITE II, HEX WSHR SLTD S	3.000 EA
35CB3500A01SP	CONDUIT BOX LID, MACH	1.000 EA
51XN2520A16	SCREW, HEX WS SLT, ZN, 1/4-20 X 1.00	4.000 EA
HW2501D13SP	KEY, 3/16 SQ X 1.375	1.000 EA
HA7000A01	KEY RETAINER 7/8" DIA SHAFT	1.000 EA
85XU0407S04	4X1/4 U DRIVE PIN STAINLESS	6.000 EA
NP0018	NP- XP CONDUIT BOX DO NOT MAKE SELLABLE	1.000 EA
S/P101-000-006	EPACT PROC-ALL PLANTS,NON-STD GREASE,OR	1.000 EA

Parts List (continued)		
Part Number	Description	Quantity
MJ1000A75	GREASE, POLYREX EM EXXON	0.050 LB
MG1025G05	PAINT 789.201 (WILCO) DARK GRAY METALLIC	0.017 GA
HA3104A08	THRUBOLT-5/16-18X9.375 X X	4.000 EA
LB1119	WARNING LABEL	1.000 EA
LB1172A01	CUSTOM MTR CARTON LABEL LASER PRINTER	1.000 EA
LC0145B01	CONNECTION LABEL	1.000 EA
LB5040	INSTRUCTION TAG, AC & DC	1.000 EA
NP1426XP	UL/CSA, CLI GP-D,CLII GP-F&G,CC	1.000 EA
PK3082	STYROFOAM CRADLE	1.000 EA
36PA1000	PACK GROUP W/LB5001	1.000 EA

Performance Data at 460V, 60Hz, 2.0HP (Typical performance - Not guaranteed values)

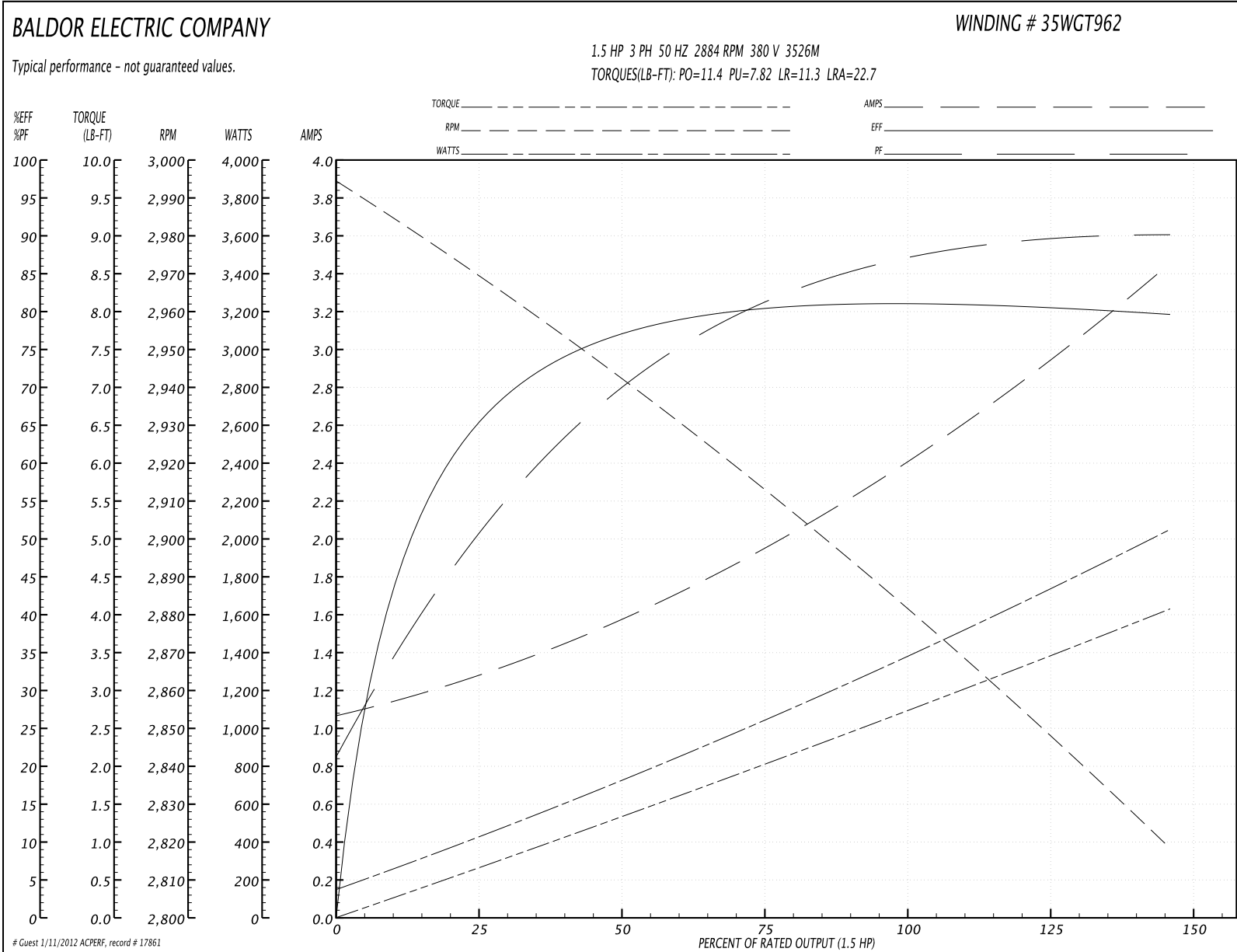
General Characteristics							
Full Load Torque:	3.0 LB-FT			Start Configuration:	DOL		
No-Load Current:	1.1 Amps			Break-Down Torque:	12.4 LB-FT		
Line-line Res. @ 25°C.:	7.86 Ohms A Ph / 0.0 Ohms B Ph			Pull-Up Torque:	7.6 LB-FT		
Temp. Rise @ Rated Load:	47 C			Locked-Rotor Torque:	11.0 LB-FT		
Temp. Rise @ S.F. Load:				Starting Current:	24.3 Amps		
Load Characteristics							
% of Rated Load	25	50	75	100	125	150	S.F.
Power Factor:	50.0	73.0	80.0	85.0	89.0	89.0	0.0
Efficiency:	72.7	81.2	83.8	84.2	83.7	82.6	0.0
Speed:	3563.0	3537.0	3507.0	3475.0	3440.0	3402.0	0.0
Line Amperes:	1.3	1.6	2.1	2.6	3.1	3.7	0.0

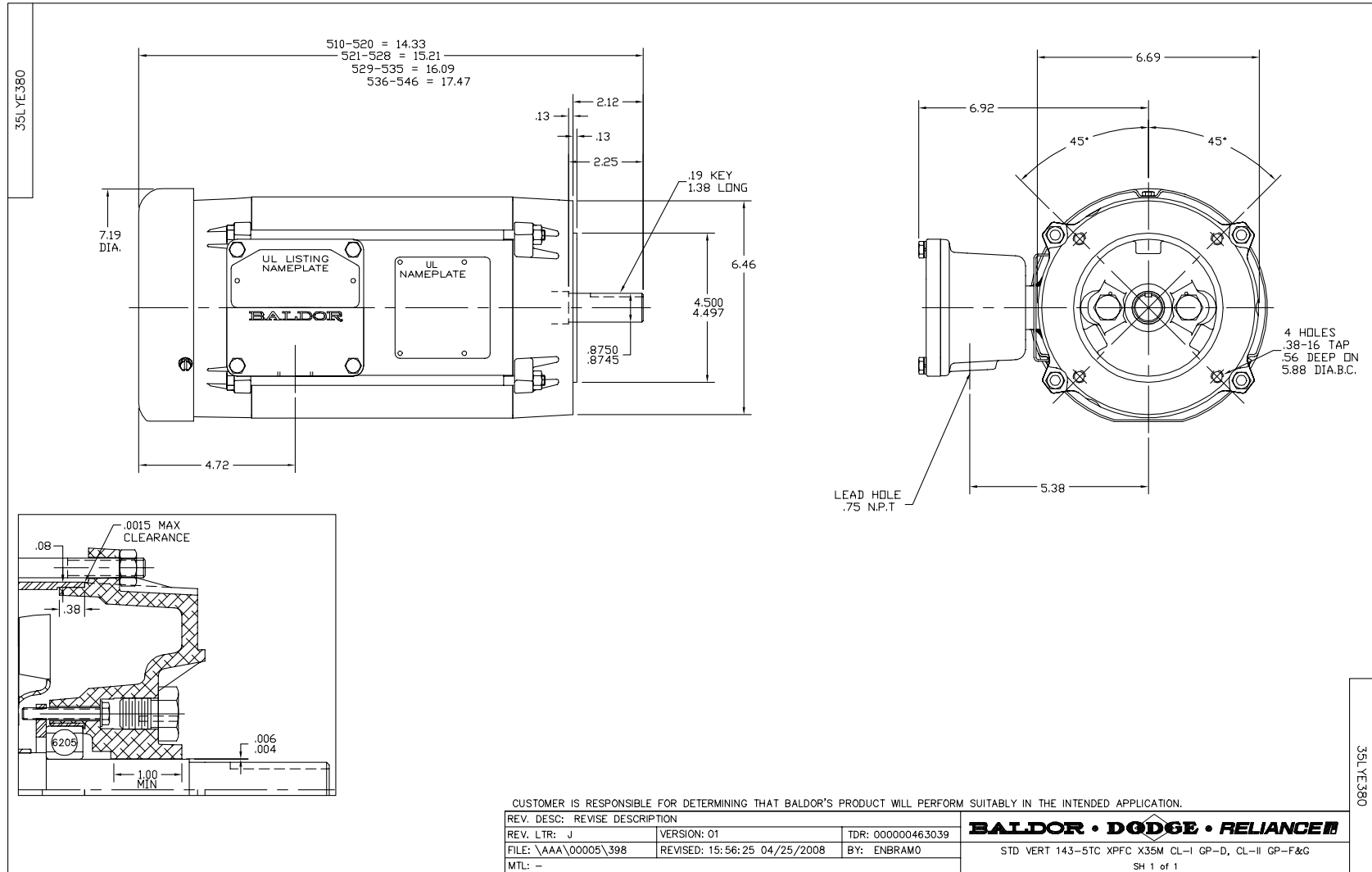
Performance Graph at 460V, 60Hz, 2.0HP Typical performance - Not guaranteed values



Performance Data at 380V, 50Hz, 1.5HP (Typical performance - Not guaranteed values)							
General Characteristics							
Full Load Torque:	2.71 LB-FT			Start Configuration:	DOL		
No-Load Current:	1.09 Amps			Break-Down Torque:	11.4 LB-FT		
Line-line Res. @ 25°C.:	7.02 Ohms A Ph / 0.0 Ohms B Ph			Pull-Up Torque:	7.82 LB-FT		
Temp. Rise @ Rated Load:	42 C			Locked-Rotor Torque:	11.3 LB-FT		
Temp. Rise @ S.F. Load:	49 C			Starting Current:	22.7 Amps		
Load Characteristics							
% of Rated Load	25	50	75	100	125	150	S.F.
Power Factor:	52.0	73.0	80.0	85.0	89.0	91.0	0.0
Efficiency:	65.1	77.2	80.3	81.3	80.7	79.5	0.0
Speed:	2965.0	2941.0	2914.0	2884.0	2852.0	2817.0	0.0
Line Amperes:	1.27	1.53	1.98	2.43	2.89	3.44	0.0

Performance Graph at 380V, 50Hz, 1.5HP Typical performance - Not guaranteed values





CD0005



LOW VOLTAGE
(2Y)



LINE

HIGH VOLTAGE
(1Y)



LINE

NOTES:

1. INTERCHANGE ANY TWO LINE LEADS TO REVERSE ROTATION.
2. OPTIONAL THERMOSTATS ARE PROVIDED WHEN SPECIFIED.
3. ACTUAL NUMBER OF INTERNAL PARALLEL CIRCUITS MAY BE A MULTIPLE OF THOSE SHOWN ABOVE.
4. LEAD COLORS ARE OPTIONAL. LEADS MUST ALWAYS BE NUMBERED AS SHOWN.

REV. DESC: REVISE TO SHOW OPTIONAL COLORS

REV. LTR: E BY: JLP

REVISED: 01/19/99 10:15

TDR: 0171435

900003

FILE: AAA00005140

MDL: -

MTL: -

BALDOR ELECTRIC Co.

3PH, DV, 9 LEADS

CD0005