

# **BALDOR**® • *RELIANCE*

## **Product Information Packet**

### **GM25022**

**G.M. K16BA 208-230/460V AC 5:1**

| Product Detail |      |            |       |             |          |               |              |
|----------------|------|------------|-------|-------------|----------|---------------|--------------|
| Revision:      | L    | Status:    | PRD/A | Change #:   |          | Proprietary:  | No           |
| Type:          | AC   | Prod Type: | 2516M | Elec. Spec: | 25WGW004 | CD Diagram:   | CD0005A05    |
| Enclosure      | TENV | Mfg Plant: |       | Mech Spec:  |          | Layout:       | 25E644W004G2 |
| Frame:         | BA   | Mounting:  |       | Poles:      | 04       | Created Date: | 03-19-2005   |
| Base:          |      | Rotation:  | R     | Insulation: | F        | Eff. Date:    | 08-21-2008   |
| Leads:         | 9#18 |            |       |             |          | Replaced By:  |              |

**Nameplate NP1784A01**

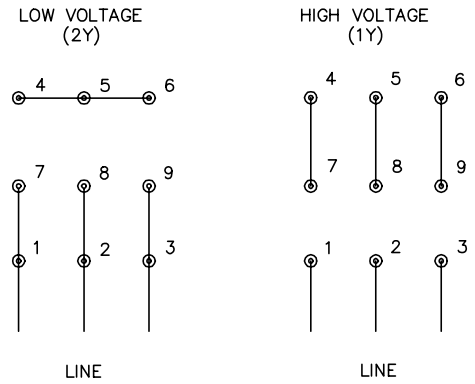
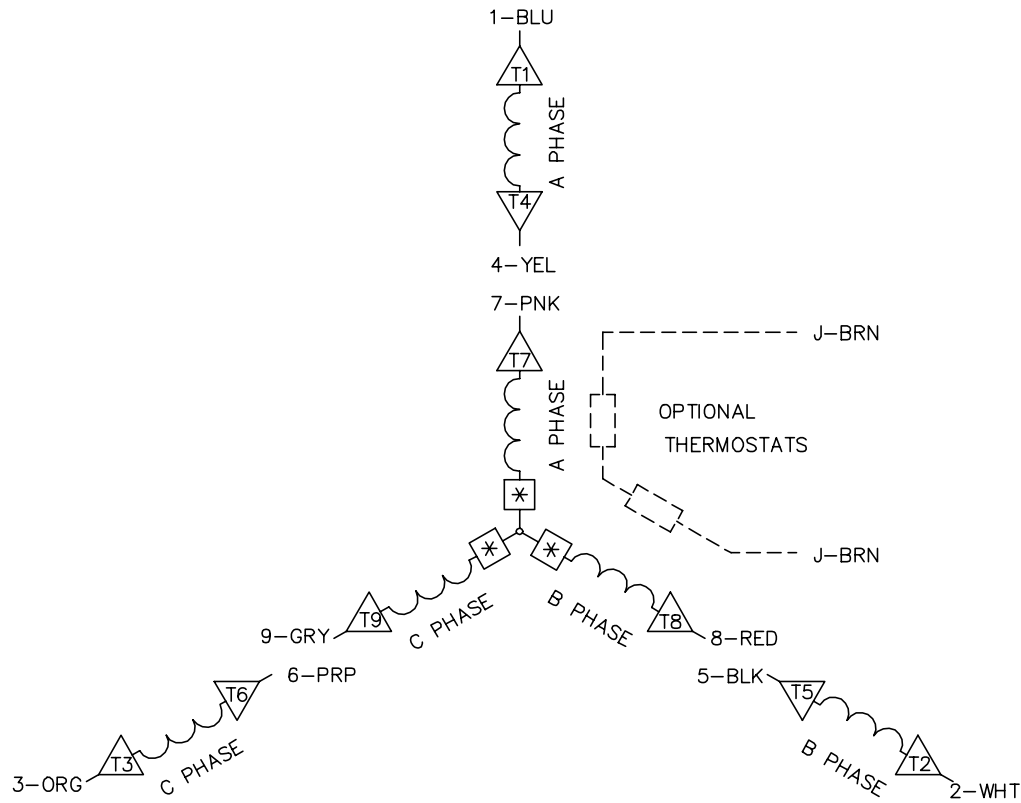
|            |                      |          |        |         |   |  |  |
|------------|----------------------|----------|--------|---------|---|--|--|
| CAT.NO.    | GM25022              |          |        |         |   |  |  |
| SPEC.      | 25E644W004G2         |          |        |         |   |  |  |
| SER.NO     |                      |          |        |         |   |  |  |
| HP         | .1//.13              | HZ       | 50//60 |         |   |  |  |
| VOLTS      | 190/380//208-230/460 |          |        |         |   |  |  |
| AMP        | .82/.4//.76-.84/.41  |          |        |         |   |  |  |
| PH         | 3                    | CAP      |        | CODE    | - |  |  |
| CLASS      | F                    | AMB.     | 40C    |         |   |  |  |
| DUTY       | CONT                 |          |        |         |   |  |  |
| R.P.M.     | 285//345             |          |        |         |   |  |  |
| TORQ/IN LB | 15                   |          |        |         |   |  |  |
| RATIO      | 5:1                  |          |        |         |   |  |  |
| APRV-CE    |                      | APRV-CSA |        | APRV-UL |   |  |  |

| Parts List   |  |          |            |
|--------------|--|----------|------------|
| Product ID   | Description                              | Quantity | List Price |
| SA126742     | SA 25E644W004G2                          | 1.000    | 234.00     |
| RA117031     | RA 25E644W004G2                          | 1.000    | 204.00     |
| SR001505     | SR 25E644W004G2                          | 1.000    | 80.00      |
| LC0005       | CONN.DIA.,TYPE M,9-LD,DUAL VOLTAGE,REVER | 1.000    | 2.00       |
| 25EP2108A03  | ENDPLATE,25 DE RA EXTERNAL THRU BOLTS    | 1.000    | 101.00     |
| HW5002A45    | WALDES TRUARC N5002-118 RETAINING RING   | 1.000    | 4.00       |
| HW4600D37    | SEAL,10MM X 26MM X7MM                    | 1.000    | 3.00       |
| RM1057       | RUBBER SQUARE RING 1.424 I.D.            | 1.000    | 2.00       |
| 25BA4000-PA  | 25BA4000-PAINTED                         | 1.000    | 13.00      |
| 11XN1032A08  | 10-32 X 1/2 HEX SLT WS HD X              | 4.000    | 2.00       |
| HW1004A10    | WASHER,LOCK,#10 INT. TOOTH               | 4.000    | 2.00       |
| MJ5004A35    | ADHESIVE LOCTITE #243-31 50 ML           | 0.001    |            |
| CB0100B01    | CB,EXR 25 .88 LEAD EXIT F1 POSITION      | 1.000    | 41.00      |
| GS0120       | GASKET,CONDUIT BOX FOR CB2000A17         | 1.000    | 2.00       |
| 15XN0832A08  | SCREW PAN HD 08-32 X 1/2 (PHILLIPS)      | 2.000    | 2.00       |
| CB0103A00-PA | CB0103A00 PAINTED                        | 1.000    | 4.00       |
| GS0121A01    | GASKET, LID FOR CB0100B00                | 1.000    | 3.00       |
| 15XM0832A06  | SCREW, 8-32X .375, THREAD FORMING        | 4.000    | 2.00       |
| 25EP2110A43  | ENDPLATE,25 ODE AC FOR EXT FINNED HSG FL | 1.000    | 80.00      |
| HW5109A08    | WASHER, WAVE SPRING FOR 30MM BORE SMALLE | 1.000    | 3.00       |
| HA3100A08    | THRUBOLT 10-32 X 5.750                   | 2.000    | 2.00       |
| 11XT0832G04  | 8-32 X 1/4 TY 23 TAPPING                 | 1.000    | 2.00       |
| BHG5353-003G | HOUSING, B BOX GEAR HEAD                 | 1.000    | 70.00      |
| 19XN1032A12  | SCREW, HEX WASHER HEAD, #10-32 X .750    | 4.000    | 2.00       |

| Parts List (continued) |  |          |            |
|------------------------|--|----------|------------|
| Product ID             | Description                              | Quantity | List Price |
| HA4021A05              | 1/16 NPSF-HX SOC PIPE PLUG TAPER DRY SEA | 1.000    | 2.00       |
| BH1104                 | BRG-SLEEVE, .500 ID X .500 WIDE          | 1.000    | 15.00      |
| HW4600C29              | SEAL, TCM #0507416 SCW .50X.75X.165 RB   | 1.000    | 3.00       |
| BCG5490-001G           | CAP, "B" BOX GEARHOUSING, MACH'D         | 1.000    | 18.00      |
| RM1078                 | RUBBER SQUARE RING 1.864 I.D.            | 1.000    | 2.00       |
| BH1104                 | BRG-SLEEVE, .500 ID X .500 WIDE          | 1.000    | 15.00      |
| HW4600C29              | SEAL, TCM #0507416 SCW .50X.75X.165 RB   | 1.000    | 3.00       |
| 15XM0832A08            | SCREW, 8-32X .500, THREAD FORMING        | 3.000    | 2.00       |
| HA1194B02              | BLADDER,BDE EXPANSION                    | 1.000    | 14.00      |
| 15XM0632A06            | SCREW, 6-32X .375, THREAD FORMING        | 3.000    | 2.00       |
| MJ1000B02              | KLUBERSYNTH GH6-460 GEAR OIL             | 0.008    | 215.00     |
| MG3000G01              | EPOXY POWDER, GREY CHARCOAL              | 0.030    | 37.00      |
| NP1784A01              | NP,AC STD AD NONE V CE CSA UL GEAR MOTOR | 1.000    |            |
| LB5040                 | INSTRUCTION TAG, AC & DC                 | 1.000    | 2.00       |
| CPA1000                | PACKING GROUP STD. SINGLE                | 1.000    | 7.00       |
| LB1125C01              | STD (STOCK) CARTON LABEL BALDOR WITH FLA | 1.000    | 2.00       |



CD0005A05



- NOTES:
1. INTERCHANGE ANY TWO LINE LEADS TO REVERSE ROTATION.
  2. OPTIONAL THERMOSTATS ARE PROVIDED WHEN SPECIFIED.
  3. ACTUAL NUMBER OF INTERNAL PARALLEL CIRCUITS MAY BE A MULTIPLE OF THOSE SHOWN ABOVE.
  4. LEAD COLORS ARE OPTIONAL. LEADS MUST ALWAYS BE NUMBERED AS SHOWN.
  5. =MAGNET WIRE COIL END WITH I.D. NUMBER.
  6. =MAGNET WIRE COIL END WITH I.D. SYMBOL.
  7. SEE CW PRINT FOR NEST TO NEST CROSSOVER CONNECTIONS.

|                          |                      |                              |  |
|--------------------------|----------------------|------------------------------|--|
| REV. DESC: ADD NEST NOTE |                      |                              |  |
| REV. LTR: C              | VERSION: 03          | TDR: 000000445597            |  |
| CD0005A05                | FILE: \CKA\00024\847 | REVISED: 12:51:06 11/15/2007 |  |
|                          | MTL: -               | BY: CKMICRO                  |  |

**BALDOR • DODGE • RELIANCE**

3PH, DV, 9 LEADS, CK

CD0005A05