

# **BALDOR**® • *RELIANCE*

## **Product Information Packet**

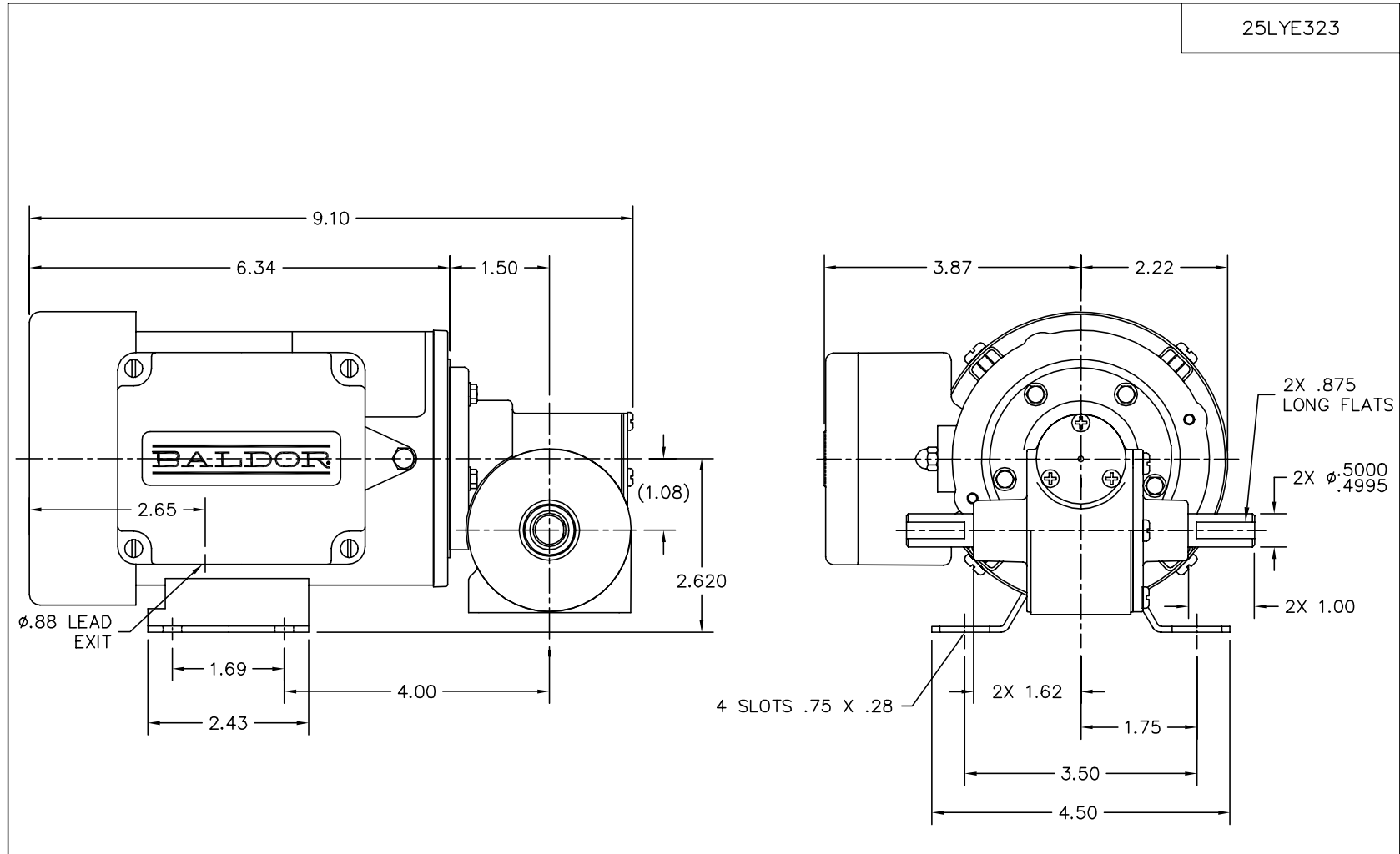
### **GM3329**

**.16HP,3425RPM,3PH,60HZ,BA-0,2512M,TEFC**

Product Detail							
Revision:	N	Status:	PRD/A	Change #:		Proprietary:	No
Type:	AC	Prod Type:	2512M	Elec. Spec:	25WGW219	CD Diagram:	CD0005A05
Enclosure	TEFC	Mfg Plant:		Mech Spec:		Layout:	25LYE323
Frame:	BA	Mounting:		Poles:	02	Created Date:	
Base:		Rotation:	R	Insulation:	F	Eff. Date:	01-28-2008
Leads:	9#18					Replaced By:	
Nameplate NP1220A07							
CAT.NO.	GM3329						
SER.NO	DATE CODE						
SPEC.	25E323W219G1						
HP	.16          TE						
VOLTS	208-230/460						
AMP	.65/.33						
HZ	60			PH	3		
AMB.	40C			DUTY	CONT		
CAP				CODE	-		
SER.F.	1.00			CLASS	F		
R.P.M.	230						
TORQ/IN LB	27						
RATIO	15:1						
APRV-CSA				APRV-UL			

<b>Parts List</b>			
<b>Product ID</b>	<b>Description</b>	<b>Quantity</b>	<b>List Price</b>
SA069579	SA 25E323W219G1	1.000	257.00
RA063520	RA 25E323W219G1	1.000	257.00
SR000558	SR 25E323W219G1	1.000	76.00
LC0005	CONN.DIA.,TYPE M,9-LD,DUAL VOLTAGE,REVER	1.000	2.00
24CB3500A	CONDUIT BOX LID - MODEL 24 W/ LOGO KENCO	1.000	7.00
24CB3000A	CONDUIT BOX - MODEL 24 KENCO	1.000	7.00
15XP0619A08	#6-19X1/2 PAN HD PHILLIPS PLASTITE 48-2	4.000	2.00
XY0632A04	NUT, #6-32 ACORN, HIGH CROWN	1.000	2.00
HA4021A05	1/16 NPSF-HX SOC PIPE PLUG TAPER DRY SEA	4.000	2.00
XY0632A05	NUT, #6-32 SELF LOCKING	2.000	2.00
25EP3100A08	EP,25AC DE CL 60R8 RA 2.375 BC	1.000	52.00
HW4600E07	SEAL,TRANSCOM #05112ASCW .500 X 1.125 X	1.000	2.00
HW5109A08	WASHER, WAVE SPRING FOR 30MM BORE SMALLE	1.000	3.00
HW5002A44	N5002-112 RET RING INTERNBEVELED F/6001	1.000	2.00
25EP2101A18	EP,25AC ODE CL NONE 0.500 SHAFT EXIT	1.000	46.00
11XT0832G04	8-32 X 1/4 TY 23 TAPPING	1.000	2.00
HA3170A23	THRUBOLT,FLAT HD. #8-32 THDS X 5.625 LON	2.000	3.00
MG3000G01	EPOXY POWDER, GREY CHARCOAL	0.010	37.00
25FH4003-PA	FAN COVER, 25F PAINTED	1.000	13.00
BFN3712	FAN,PM MOTOR STYLE R	1.000	19.00
BMH1544	SCREW,PAN 10-32 X 1/2"	4.000	2.00
BHG5353-003G	HOUSING, B BOX GEAR HEAD	1.000	70.00
BCG5490-001G	CAP, "B" BOX GEARHOUSING, MACH'D	1.000	18.00
RM1057	RUBBER SQUARE RING 1.424 I.D.	1.000	2.00

<b>Parts List (continued)</b>			
<b>Product ID</b>	<b>Description</b>	<b>Quantity</b>	<b>List Price</b>
19XN1032A12	SCREW, HEX WASHER HEAD, #10-32 X .750	4.000	2.00
BH1104	BRG-SLEEVE, .500 ID X .500 WIDE	1.000	15.00
BH1104	BRG-SLEEVE, .500 ID X .500 WIDE	1.000	15.00
RM1078	RUBBER SQUARE RING 1.864 I.D.	1.000	2.00
15XM0832A08	SCREW, 8-32X .500, THREAD FORMING	3.000	2.00
HA1194B02	BLADDER,BDE EXPANSION	1.000	14.00
15XM0632A06	SCREW, 6-32X .375, THREAD FORMING	3.000	2.00
HW4600C29	SEAL, TCM #0507416 SCW .50X.75X.165 RB	1.000	3.00
HW4600C29	SEAL, TCM #0507416 SCW .50X.75X.165 RB	1.000	3.00
MJ1000B02	KLUBERSYNTH GH6-460 GEAR OIL	0.010	215.00
WM0038A03	WORM,BE 15.0 INP 1.083 C.D.	1.000	42.00
MJ5019A01	ADHESIVE LOCTITE #680 WAS BAD4525	0.001	276.00
NP1220A07	NP,AC STD AD NONE V CSA UL GEAR MOTOR	1.000	
CPA1000	PACKING GROUP STD. SINGLE	1.000	7.00
LB1172A01	CUSTOM MTR CARTON LABEL LASER PRINTER	1.000	2.00



CUSTOMER IS RESPONSIBLE FOR DETERMINING THAT MOTOR PERFORMANCE IS SUITABLE IN THE APPLICATION.

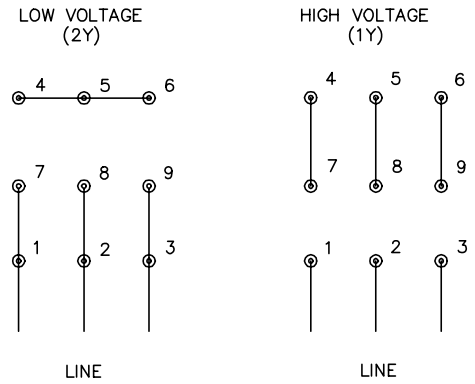
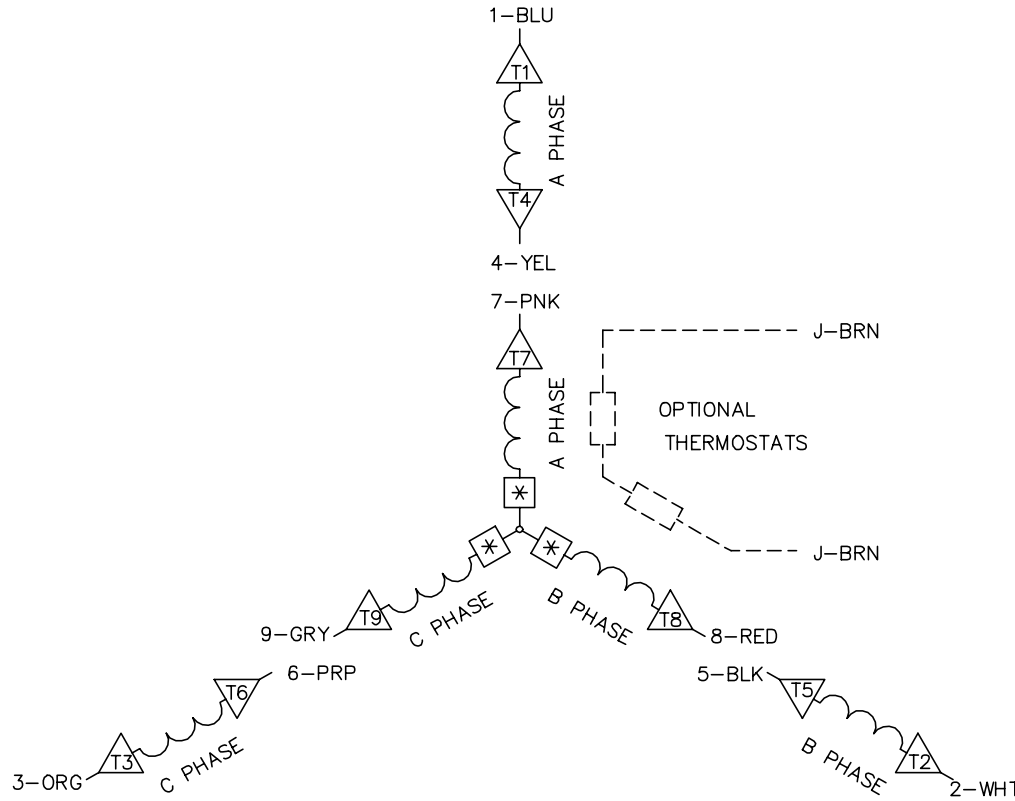
REV. DESC: CHG TO 25BA4016			
REV. LTR: B	BY: RS	REVISED: 09:42:31 02/21/2003	TDR: 278409
25LYE323		FILE: CKA00014678	REF: 25LYE323
		MTL: -	

**BALDOR ELECTRIC Co.**

LAYOUT,25 BA TEFC GP NONE .500 1.000 FLAT

25LYE323

CD0005A05



- NOTES:
1. INTERCHANGE ANY TWO LINE LEADS TO REVERSE ROTATION.
  2. OPTIONAL THERMOSTATS ARE PROVIDED WHEN SPECIFIED.
  3. ACTUAL NUMBER OF INTERNAL PARALLEL CIRCUITS MAY BE A MULTIPLE OF THOSE SHOWN ABOVE.
  4. LEAD COLORS ARE OPTIONAL. LEADS MUST ALWAYS BE NUMBERED AS SHOWN.
  5. =MAGNET WIRE COIL END WITH I.D. NUMBER.
  6. =MAGNET WIRE COIL END WITH I.D. SYMBOL.
  7. SEE CW PRINT FOR NEST TO NEST CROSSOVER CONNECTIONS.

REV. DESC: ADD NEST NOTE			
REV. LTR: C	VERSION: 03	TDR: 000000445597	
CD0005A05	FILE: \CKA\00024\847	REVISED: 12:51:06 11/15/2007	
	MTL: -	BY: CKMICRO	

**BALDOR • DODGE • RELIANCE**

3PH, DV, 9 LEADS, CK

CD0005A05