

BALDOR® • RELIANCE

Product Information Packet

JMM3713T

15HP,3450RPM,3PH,60HZ,215JM,3744M,TEFC

Product Detail							
Revision:	S	Status:	PRD/A	Change #:		Proprietary:	No
Type:	AC	Prod Type:	3744M	Elec. Spec:	37WGX651	CD Diagram:	CD0005
Enclosure	TEFC	Mfg Plant:		Mech Spec:	37M031	Layout:	37LYM031
Frame:	215JM	Mounting:	F1	Poles:	02	Created Date:	
Base:	RG	Rotation:	R	Insulation:	F	Eff. Date:	10-08-2007
Leads:	9#14					Replaced By:	
Nameplate NP1256L							
CAT.NO.	JMM3713T						
SPEC.	37M31X651						
HP	15						
VOLTS	208-230/460						
AMP	37.5-34/17						
RPM	3450						
FRAME	215JM	HZ	60	PH	3		
SER.F.	1.00	CODE	K	DES	B	CLASS	F
NEMA-NOM-EFF	86.5	PF	95				
RATING	40C AMB-CONT						
CC		USABLE AT 208V	37.5				
DE	6309	ODE	6206				
ENCL	TEFC	SN					

Parts List			
Product ID	Description	Quantity	List Price
SA033114	SA 37M31X651	1.000	761.00
RA029146	RA 37M31X651	1.000	598.00
HW3200A01	3/8-16X3/4 I-BLT WELDED F/S	1.000	3.00
37CB3006	37 CB CASTING W/1.38 LEAD HOLE @ 6:00	1.000	14.00
37GS1000SP	GASKET, CONDUIT BOX STD., .06 THICK LEXI	1.000	3.00
51XW2520A12	.25-20 X .75, TAPTITE II, HEX WSHR SLTD	2.000	2.00
11XW1032G06	10-32 X .38, TAPTITE II, HEX WSHR SLTD U	1.000	2.00
37EP3101A29	SPL FR.EP.37 L & M FRAME-TEFC-W/GREASER	1.000	127.00
HW4500A17	317400 ALEMITE GREASE RELIEF	1.000	4.00
HW4500A01	1641B(ALEMITE)400 UNIV, GREASE FITT	1.000	2.00
HW5100A06	W2420-025 WVY WSHR (WB)	1.000	2.00
37EP3401T11	EP PU ENCL 309 BRG W/GRSR & RELIEF	1.000	104.00
HW4500A17	317400 ALEMITE GREASE RELIEF	1.000	4.00
HW4500A01	1641B(ALEMITE)400 UNIV, GREASE FITT	1.000	2.00
10XN2520A36	1/4-20X 2 1/4 HEX HD X	4.000	2.00
HW1001A25	LOCKWASHER 1/4, ZINC PLT .493 OD, .255 I	4.000	2.00
XY3118A12	5/16-18 HEX NUT DIRECTIONAL SERRATION	4.000	2.00
07FH4007SP	IEC FH W/GRSR, NOTCH @ 6:00 & 3 FAN CVR	1.000	39.00
51XW1032A06	10-32 X .38, TAPTITE II, HEX WSHR SLTD S	3.000	3.00
HW4600A73	SEAL 1.748 X 2.375 X 0.250 FACE SEALING	1.000	20.00
37CB4516	CONDUIT BOX LID FOR OPEN AND GP 37 FRAME	1.000	2.00
37GS1008SP	37 GS FOR CB LID - LEXIDE	1.000	2.00
51XW0832A07	8-32 X .44, TAPTITE II, HEX WSHR SLTD SE	4.000	2.00
HW2501D13SP	KEY, 3/16 SQ X 1.375	1.000	2.00

Parts List (continued)			
Product ID	Description	Quantity	List Price
HA7000A01	KEY RETAINER 7/8" DIA SHAFT	1.000	2.00
LB1115	LABEL,LIFTING DEVICE (ON ROLLS0	1.000	2.00
10XF0440S02	04-40 X 1/8 TYPE F HEX HD STAINLESS STIC	2.000	2.00
MJ1000A02	GREASE, POLYREX EM EXXON	0.050	10.00
37FN3002A01SP	EXT FAN, PLASTIC	1.000	27.00
51XB1214A20	12-14X1.25 HXWSSLD SERTYB	1.000	2.00
MG1000G27	PAINT- S9282E CHARCOAL GREY	0.028	4,000.00
HA3104A17	5/16-18X13.250 T-BLT/OHIO	4.000	2.00
LB1125C01	STD (STOCK) CARTON LABEL BALDOR WITH FLA	1.000	2.00
LC0005E01	CONN.DIA./WARNING LABEL (LC0005/LB1119)	1.000	2.00
NP1256L	NP STD LASER ENGRAVED, UL CSA CC, W/O TH	1.000	3.00
37PA1052	PACKAGING GROUP, 150 LB MTR 2 X 4 RUNNER	1.000	48.00

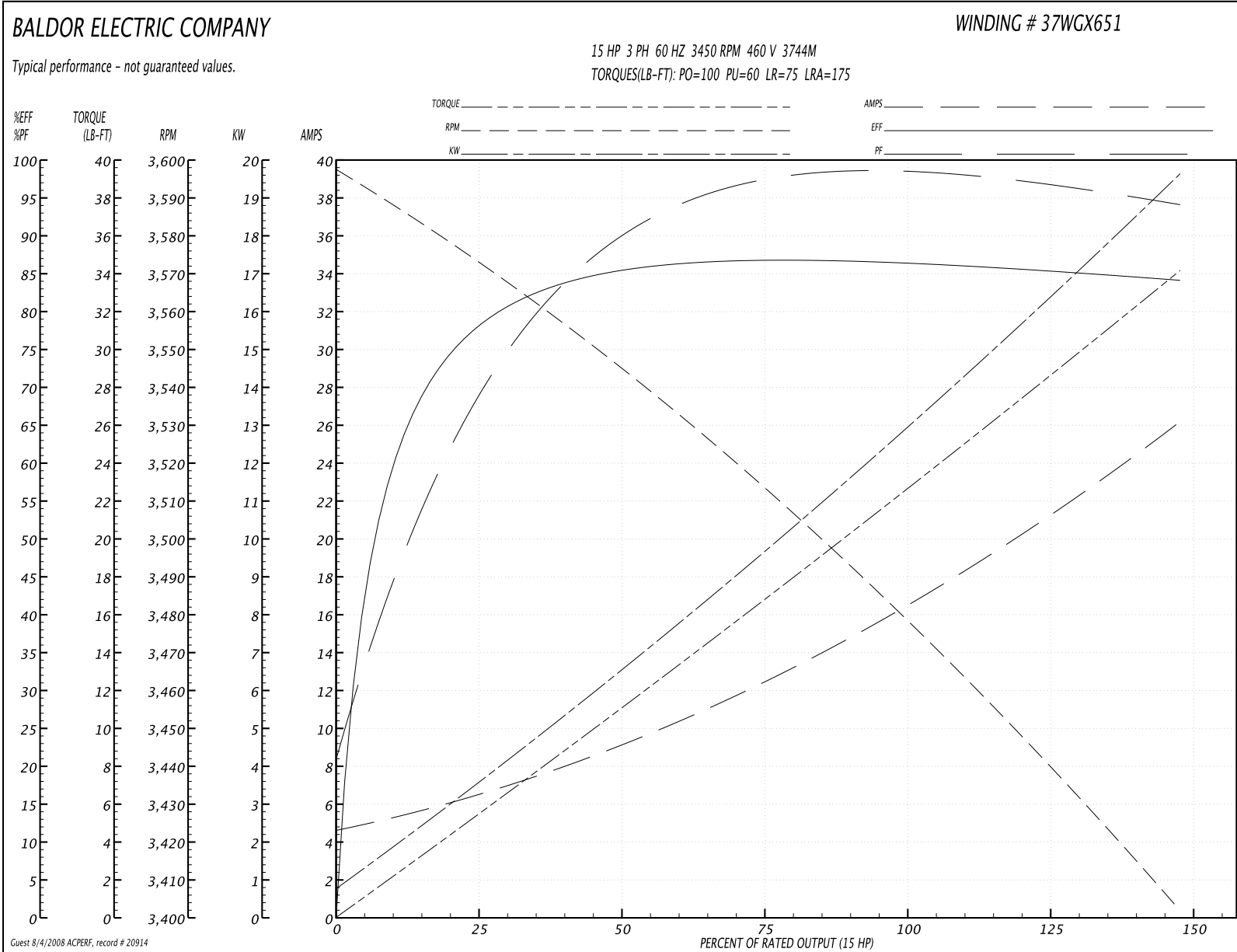
Performance Data at 460V, 60Hz, 15.0HP (Typical performance - Not guaranteed values)
General Characteristics

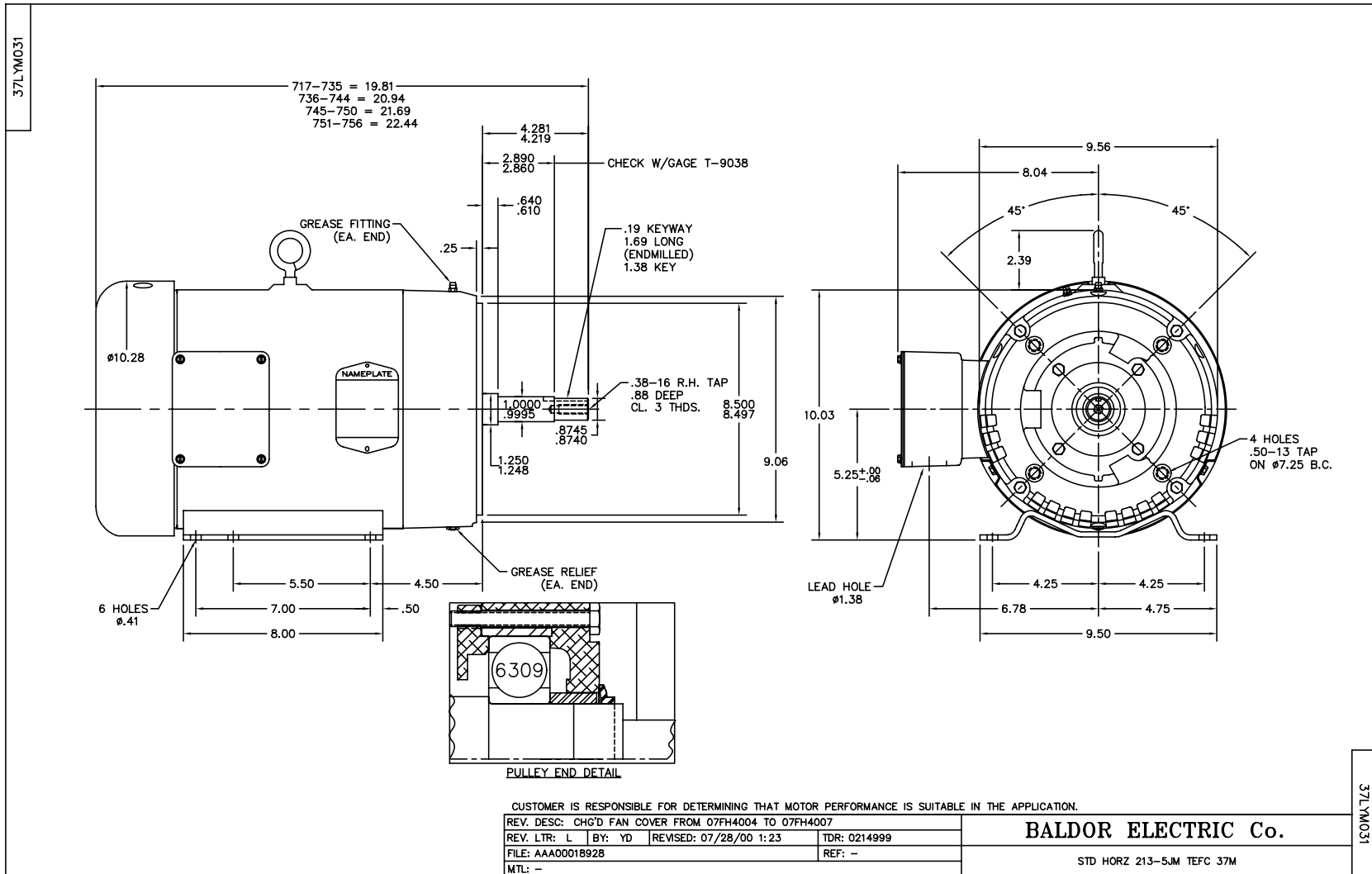
Full Load Torque:	22.8 LB-FT	Start Configuration:	DOL
No-Load Current:	4.9 Amps	Break-Down Torque:	100.0 LB-FT
Line-line Res. @ 25°C.:	0.76 Ohms A Ph / 0.0 Ohms B Ph	Pull-Up Torque:	60.0 LB-FT
Temp. Rise @ Rated Load:	96°C	Locked-Rotor Torque:	75.0 LB-FT
Temp. Rise @ S.F. Load:	0°C	Starting Current:	175.0 Amps

Load Characteristics

% of Rated Load:	25	50	75	100	125	150	S.F.
Power Factor:	65.0	84.0	91.0	93.0	94.0	94.0	0.0
Efficiency:	76.7	85.2	86.9	86.7	85.6	83.9	0.0
Speed:	3570.0	3543.0	3512.0	3479.0	3441.0	3401.0	0.0
Line Amperes:	6.2	9.1	12.8	16.8	21.3	26.0	0.0

Performance Graph at 460V, 60Hz, 15.0HP (Typical performance - Not guaranteed values)

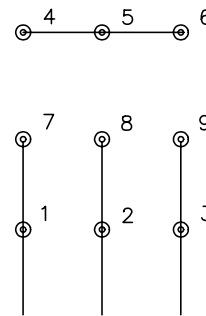




CD0005

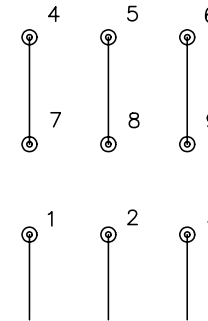


LOW VOLTAGE
(2Y)



LINE

HIGH VOLTAGE
(1Y)



LINE

NOTES:

1. INTERCHANGE ANY TWO LINE LEADS TO REVERSE ROTATION.
2. OPTIONAL THERMOSTATS ARE PROVIDED WHEN SPECIFIED.
3. ACTUAL NUMBER OF INTERNAL PARALLEL CIRCUITS MAY BE A MULTIPLE OF THOSE SHOWN ABOVE.
4. LEAD COLORS ARE OPTIONAL. LEADS MUST ALWAYS BE NUMBERED AS SHOWN.

REV. DESC: REVISE TO SHOW OPTIONAL COLORS

REV. LTR: E BY: JLP

REVISED: 01/19/99 10:15

TDR: 0171435

9000D

FILE: AAA00005140

MDL: -

MTL: -

BALDOR ELECTRIC Co.

3PH, DV, 9 LEADS

CD0005