

BALDOR® • RELIANCE

Product Information Packet

M3713T

15HP,3450RPM,3PH,60HZ,215T,3750M,TEFC,F1

Product Detail							
Revision:	J	Status:	PRD/A	Change #:		Proprietary:	No
Type:	AC	Prod Type:	3750M	Elec. Spec:	37WGY719	CD Diagram:	CD0005
Enclosure	TEFC	Mfg Plant:		Mech Spec:	37H477	Layout:	37LYH477
Frame:	215T	Mounting:	F1	Poles:	02	Created Date:	
Base:	RG	Rotation:	R	Insulation:	F	Eff. Date:	08-29-2006
Leads:	9#14					Replaced By:	
Nameplate NP1256L							
CAT.NO.	M3713T						
SPEC.	37H477Y719H1						
HP	15						
VOLTS	208-230/460						
AMP	37.5-34/17						
RPM	3450						
FRAME	215T	HZ	60	PH	3		
SER.F.	1.15	CODE	K	DES	A	CLASS	F
NEMA-NOM-EFF	90.2	PF	91				
RATING	40C AMB-CONT						
CC	010A	USABLE AT 208V	37.5				
DE	6307	ODE	6206				
ENCL	TEFC	SN					

Parts List			
Product ID	Description	Quantity	List Price
SA062712	SA 37H477Y719H1	1.000	799.00
RA056944	RA 37H477Y719H1	1.000	596.00
HW3200A01	3/8-16X3/4 I-BLT WELDED F/S	1.000	3.00
37CB3004	37 CB CASTING W/1.09 LEAD HOLE @ 6:00	1.000	20.00
37GS1000SP	GASKET, CONDUIT BOX STD., .06 THICK LEXI	1.000	3.00
51XW2520A12	.25-20 X .75, TAPTITE II, HEX WSHR SLTD	2.000	2.00
11XW1032G06	10-32 X .38, TAPTITE II, HEX WSHR SLTD U	1.000	2.00
37EP3101A01SP	FR ENDPLATE,TEFC, 37 L&M, W/GREASER	1.000	119.00
HW4500A01	1641B(ALEMITE)400 UNIV, GREASE FITT	1.000	2.00
HW5100A06	W2420-025 WVY WSHR (WB)	1.000	2.00
37EP3100A01SP	STD PU ENDPLATE, ENCL,37 "T"-307 BRG, W/	1.000	102.00
HW4500A01	1641B(ALEMITE)400 UNIV, GREASE FITT	1.000	2.00
HA3104A25	THRUBOLT- 5/16-18 X14.750 X	4.000	2.00
XY3118A12	5/16-18 HEX NUT DIRECTIONAL SERRATION	4.000	2.00
51XB1214A20	12-14X1.25 HXWSSLD SERTYB	1.000	2.00
07FH4007SP	IEC FH W/GRSR, NOTCH @ 6:00 & 3 FAN CVR	1.000	39.00
51XW1032A06	10-32 X .38, TAPTITE II, HEX WSHR SLTD S	3.000	3.00
37CB4516	CONDUIT BOX LID FOR OPEN AND GP 37 FRAME	1.000	2.00
37GS1008SP	37 GS FOR CB LID - LEXIDE	1.000	2.00
51XW0832A07	8-32 X .44, TAPTITE II, HEX WSHR SLTD SE	4.000	2.00
HW2501F21	KEY, 5/16 SQ X 2.375	1.000	4.00
HA7000A02	KEY RETAINER RING, 1 1/8 DIA, 1 3/8 DIA	1.000	2.00
10XF0440S02	04-40 X 1/8 TYPE F HEX HD STAINLESS STIC	2.000	2.00
LB1115	LABEL,LIFTING DEVICE (ON ROLLS0	1.000	2.00

Parts List (continued)			
Product ID	Description	Quantity	List Price
MJ1000A02	GREASE, POLYREX EM EXXON	0.050	10.00
36FN3000C02	FAN EXTERNAL,PLASTIC, 5.25 OD, 1.175/1.1	1.000	15.00
MG1000G27	PAINT- S9282E CHARCOAL GREY	0.028	4,000.00
S/P101-000-000	EPACT PROCEDURES-FS PLANT-POLYREX EM, NO	1.000	
LB1125C04	STD-E (STOCK CTN LABEL STD-E WITH FLAG)	1.000	2.00
LC0005E01	CONN.DIA./WARNING LABEL (LC0005/LB1119)	1.000	2.00
NP1256L	NP STD LASER ENGRAVED, UL CSA CC, W/O TH	1.000	3.00
37PA1052	PACKAGING GROUP, 150 LB MTR 2 X 4 RUNNER	1.000	48.00

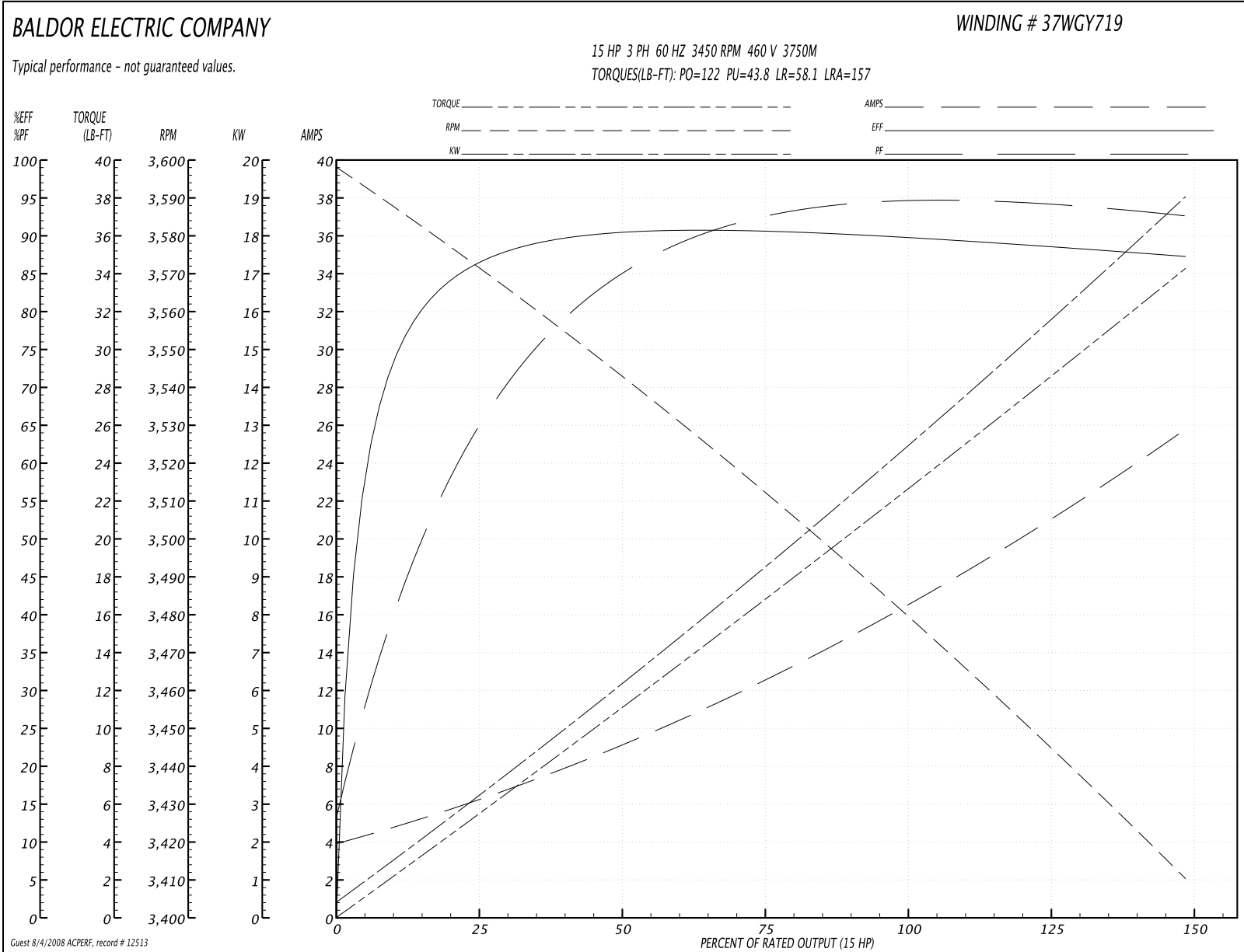
Performance Data at 460V, 60Hz, 15.0HP (Typical performance - Not guaranteed values)
General Characteristics

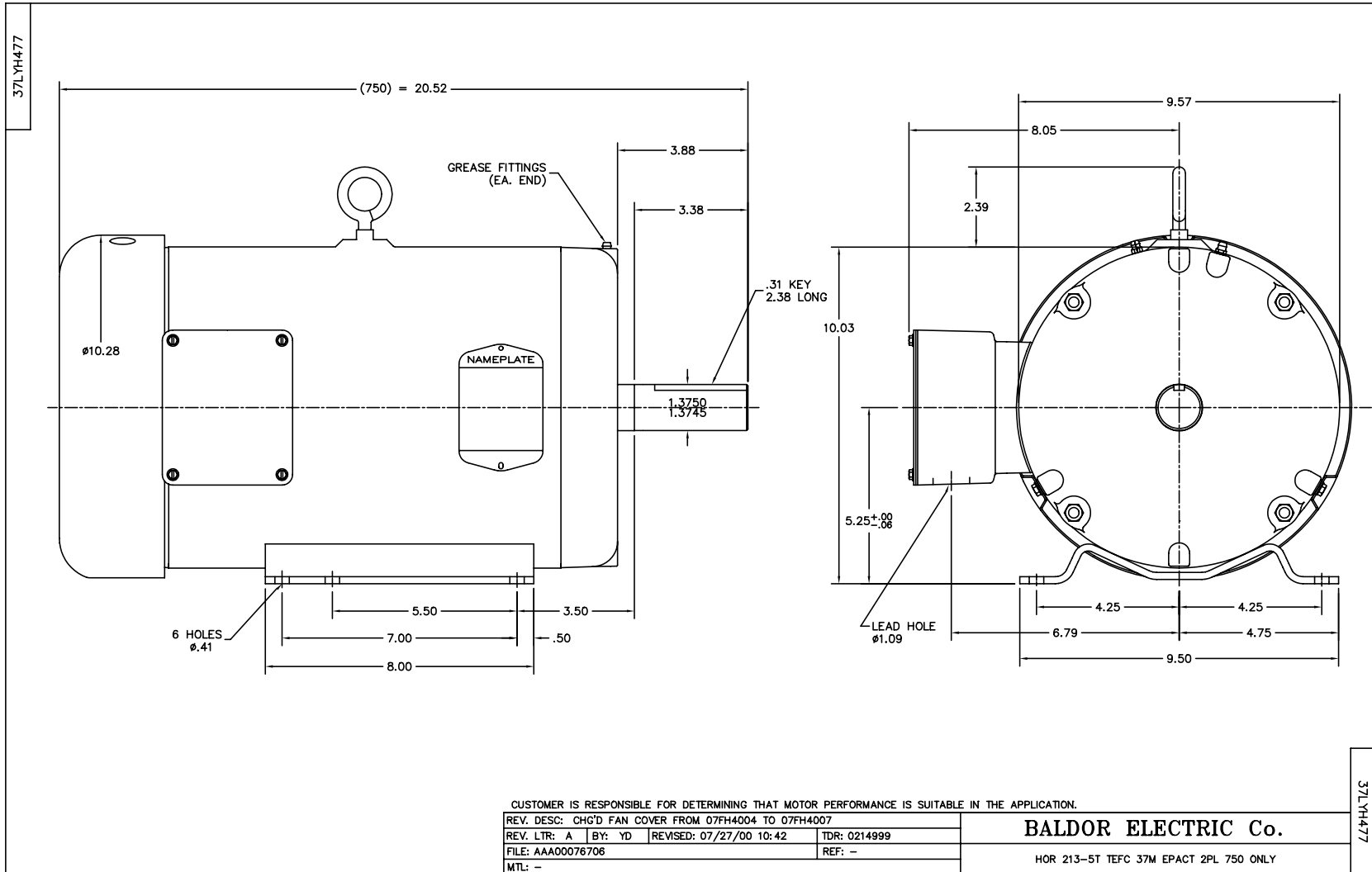
Full Load Torque:	22.2 LB-FT	Start Configuration:	DOL
No-Load Current:	4.25 Amps	Break-Down Torque:	122.0 LB-FT
Line-line Res. @ 25°C.:	0.571 Ohms A Ph / 0.0 Ohms B Ph	Pull-Up Torque:	43.8 LB-FT
Temp. Rise @ Rated Load:	80°C	Locked-Rotor Torque:	58.1 LB-FT
Temp. Rise @ S.F. Load:	101°C	Starting Current:	157.0 Amps

Load Characteristics

% of Rated Load:	25	50	75	100	125	150	S.F.
Power Factor:	68.0	86.0	91.0	93.0	93.0	93.0	93.0
Efficiency:	85.8	90.4	90.8	90.2	88.8	87.3	89.4
Speed:	3572.0	3545.0	3514.0	3483.0	3447.0	3410.0	3461.0
Line Amperes:	5.64	8.7	12.5	16.4	20.9	25.6	19.1

Performance Graph at 460V, 60Hz, 15.0HP (Typical performance - Not guaranteed values)

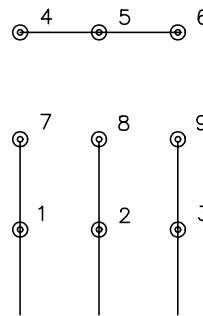




CD0005

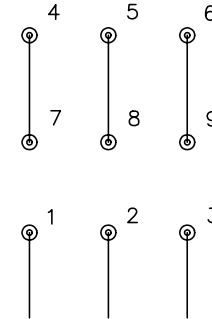


LOW VOLTAGE
(2Y)



LINE

HIGH VOLTAGE
(1Y)



LINE

NOTES:

1. INTERCHANGE ANY TWO LINE LEADS TO REVERSE ROTATION.
2. OPTIONAL THERMOSTATS ARE PROVIDED WHEN SPECIFIED.
3. ACTUAL NUMBER OF INTERNAL PARALLEL CIRCUITS MAY BE A MULTIPLE OF THOSE SHOWN ABOVE.
4. LEAD COLORS ARE OPTIONAL. LEADS MUST ALWAYS BE NUMBERED AS SHOWN.

REV. DESC: REVISE TO SHOW OPTIONAL COLORS			
REV. LTR: E	BY: JLP	REVISED: 01/19/99 10:15	TDR: 0171435
900000		FILE: AAA00005140	MDL: -
		MTL: -	

BALDOR ELECTRIC Co.

3PH, DV, 9 LEADS

CD0005